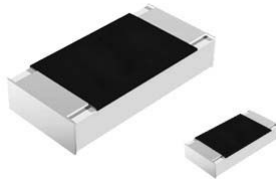


# High Voltage (up to 0.5 kV) Thick Film Chip Resistors



## FEATURES

- High operating voltage (up to 500 V)
- Pure tin solder contacts on Ni barrier layer provides compatibility with lead (Pb)-free and lead containing soldering processes
- Metal glaze on high quality ceramic
- Material categorization: For definitions of compliance please see [www.vishay.com/doc?99912](http://www.vishay.com/doc?99912)



**RoHS**  
COMPLIANT  
HALOGEN  
**FREE**

## STANDARD ELECTRICAL SPECIFICATIONS

| MODEL      | CASE SIZE INCH | CASE SIZE METRIC | POWER RATING $P_{70}$ W | LIMITING ELEMENT VOLTAGE $U_{MAX.}$ AC <sub>RMS</sub> /DC V | TEMPERATURE COEFFICIENT $\pm$ ppm/K | TOLERANCE $\pm$ % | RESISTANCE RANGE $\Omega$ | SERIES   |
|------------|----------------|------------------|-------------------------|---|-------------------------------------|-------------------|---------------------------|----------|
| RCV0805 e3 | 0805           | RR 2012M         | 0.125                   | 400   | 100                                 | 1                 | 100K to 10M               | E24; E96 |
|            |                |                  |                         |   | 200                                 | 5                 |                           | E24      |
| RCV1206 e3 | 1206           | RR 3216M         | 0.25                    | 500   | 100                                 | 1                 | 100K to 10M               | E24; E96 |
|            |                |                  |                         |   | 200                                 | 5                 |                           | E24      |

### Notes

- These resistors do not feature a lifetime limitation when operated within the limits of rated dissipation, permissible operating voltage and permissible film temperature. However, the resistance typically increases due to the resistor's film temperature over operating time, generally known as drift. The drift may exceed the stability requirements of an individual application circuit and thereby limits the functional lifetime.
- No marking.
- Power rating depends on the max. temperature at the solder point, the component placement density and the substrate material.

## TECHNICAL SPECIFICATIONS

| PARAMETER   | UNIT         | RCV0805       | RCV1206 |
|---|--------------|---------------|---------|
| Rated dissipation $P_{70}$ <sup>(1)</sup>                 | W            | 0.125         | 0.25    |
| Limiting element voltage $U_{max.}$ AC <sub>RMS</sub> /DC | V            | 400           | 500     |
| Insulation voltage $U_{ins.}$ (1 min)                     | V            | > 500         |         |
| Voltage coefficient of resistance chart                   | ppm/V        | 25            |         |
| Insulation resistance                                     | $\Omega$     | > $10^9$      |         |
| Operating temperature range                               | $^{\circ}$ C | - 55 to + 155 |         |
| Weight  | mg           | 5.5           | 10      |

### Note

- <sup>(1)</sup> The power dissipation on the resistors generates a temperature rise against the local ambient, depending on the heat flow support of the printed-circuit board (thermal resistance). The rated dissipation applies only if the permitted film temperature of 155  $^{\circ}$ C is not exceeded.

## PART NUMBER AND PRODUCT DESCRIPTION

Part Number: **RCV1206100KFKEA**

**R** **C** **V** **1** **2** **0** **6** **1** **0** **0** **K** **F** **K** **E** **A**

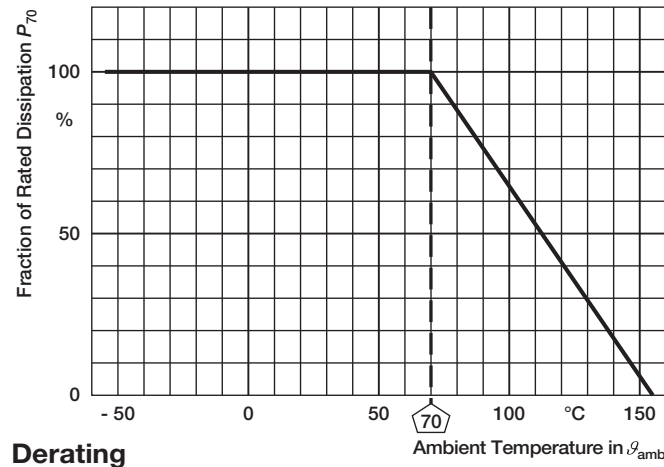
| MODEL              | RESISTANCE                  | TOLERANCE                      | TCR  | PACKAGING  |
|--------------------|-----------------------------|--------------------------------|--|------------|
| RCV0805<br>RCV1206 | K = Thousand<br>M = Million | F = $\pm$ 1 %<br>J = $\pm$ 5 % | K = $\pm$ 100 ppm/K<br>N = $\pm$ 200 ppm/K | EA, EB, EC |

Product Description: **RCV1206 100 100K 1 % ET1 e3**

| MODEL              | TCR                                | RESISTANCE                                   | TOLERANCE              | PACKAGING     | LEAD (Pb)-FREE                   |
|--------------------|------------------------------------|--|------------------------|---------------|----------------------------------|
| RCV1206            | 100                                | 100K   | 1 %                    | ET1           | e3                               |
| RCV0805<br>RCV1206 | $\pm$ 100 ppm/K<br>$\pm$ 200 ppm/K | 100K = 100 k $\Omega$<br>10M = 10 M $\Omega$ | $\pm$ 1 %<br>$\pm$ 5 % | ET1, ET5, ET6 | e3 = Pure tin termination finish |

| PACKAGING |          |          |                                       |       |       |               |
|-----------|----------|----------|---------------------------------------|-------|-------|---------------|
| MODEL     | CODE     | QUANTITY | CARRIER TAPE                          | WIDTH | PITCH | REEL DIAMETER |
| RCV0805   | EA = ET1 | 5000     | Paper tape acc. to IEC 60068-3 Type I | 8 mm  | 4 mm  | 180 mm/7"     |
|           | EB = ET5 | 10 000   |                                       |       |       | 285 mm/11.25" |
|           | EC = ET6 | 20 000   |                                       |       |       | 330 mm/13"    |
| RCV1206   | EA = ET1 | 5000     |                                       |       |       | 180 mm/7"     |
|           | EB = ET5 | 10 000   |                                       |       |       | 285 mm/11.25" |
|           | EC = ET6 | 20 000   |                                       |       |       | 330 mm/13"    |

| DIMENSIONS |        |                                       |             |             |                                       |           |                                      |     |     |                |     |     |  |
|------------|--------|---------------------------------------|-------------|-------------|---------------------------------------|-----------|--------------------------------------|-----|-----|----------------|-----|-----|--|
|            |        |                                       |             |             |                                       |           |                                      |     |     |                |     |     |  |
| SIZE       |        | DIMENSIONS in millimeters             |             |             |                                       |           | SOLDER PAD DIMENSIONS in millimeters |     |     |                |     |     |  |
|            |        |                                       |             |             |                                       |           | REFLOW SOLDERING                     |     |     | WAVE SOLDERING |     |     |  |
| INCH       | METRIC | L                                     | W           | H           | T1                                    | T2        | a                                    | b   | l   | a              | b   | l   |  |
| 0805       | 2012   | 2.0 <sup>+0.20</sup> <sub>-0.10</sub> | 1.25 ± 0.15 | 0.45 ± 0.05 | 0.3 <sup>+0.20</sup> <sub>-0.10</sub> | 0.3 ± 0.2 | 0.7                                  | 1.3 | 1.2 | 0.9            | 1.3 | 1.3 |  |
| 1206       | 3216   | 3.2 <sup>+0.10</sup> <sub>-0.20</sub> | 1.6 ± 0.15  | 0.55 ± 0.05 | 0.45 ± 0.2                            | 0.4 ± 0.2 | 0.9                                  | 1.7 | 2.0 | 1.1            | 1.7 | 2.3 |  |

**FUNCTIONAL PERFORMANCE**




| TEST PROCEDURES AND REQUIREMENTS |                            |   |   |  |                                |
|----------------------------------|----------------------------|---|---|--|--------------------------------|
| EN 60115-1<br>CLAUSE             | IEC 60068-2<br>TEST METHOD | TEST                                    | PROCEDURE   | REQUIREMENTS<br>PERMISSIBLE CHANGE ( $\Delta R$ )                                      |                                |
|                                  |                            |   | Stability for product types:<br><b>RCV e3</b>   | 100 k $\Omega$ to 10 M $\Omega$  |                                |
| 4.5                              | -                          | Resistance                              | -   | $\pm 1 \%$   | $\pm 5 \%$                     |
| 4.13                             | -                          | Short time overload                     | $U = 2.5 \times \sqrt{P_{70} \times R}$<br>$\leq 2 \times U_{max.}$<br>5 s                                    | $\pm (0.25 \% R + 0.05 \Omega)$  | $\pm (0.5 \% R + 0.05 \Omega)$ |
| 4.17.2                           | 58 (Td)                    | Solderability                           | Solder bath method;<br>Sn60Pb40<br>non-activated flux;<br>(235 $\pm$ 5) $^{\circ}$ C<br>(2 $\pm$ 0.2) s       | Good tinning<br>( $\geq 95 \%$ covered);<br>no visible damage                          |                                |
|                                  |                            |   | Solder bath method;<br>Sn96.5Ag3Cu0.5<br>non-activated flux;<br>(245 $\pm$ 5) $^{\circ}$ C<br>(3 $\pm$ 0.3) s | Good tinning<br>( $\geq 95 \%$ covered);<br>no visible damage                          |                                |
| 4.8.4.2                          | -                          | Temperature coefficient                 | (20/- 55/20) $^{\circ}$ C and<br>(20/155/20) $^{\circ}$ C   | $\pm 100$ ppm/K  | $\pm 200$ ppm/K                |
| 4.32                             | 21 (U <sub>3</sub> )       | Shear (adhesion)                        | 205 N   | No visible damage  |                                |
| 4.33                             | 21 (U <sub>1</sub> )       | Substrate bending                       | Depth 2 mm;<br>3 times  | No visible damage, no open circuit in bent position<br>$\pm (0.25 \% R + 0.05 \Omega)$ |                                |
| 4.19                             | 14 (Na)                    | Rapid change of temperature             | 30 min. at - 55 $^{\circ}$ C;<br>30 min. at 125 $^{\circ}$ C  |  |                                |
|                                  |                            |   | 5 cycles  | $\pm (0.25 \% R + 0.05 \Omega)$  | $\pm (0.5 \% R + 0.05 \Omega)$ |
|                                  |                            |   | 1000 cycles   | $\pm (1 \% R + 0.05 \Omega)$   | $\pm (1 \% R + 0.05 \Omega)$   |
| 4.23                             | -                          | Climatic sequence:                      | -   |  |                                |
| 4.23.2                           | 2 (Ba)                     | Dry heat                                | 125 $^{\circ}$ C; 16 h  |  |                                |
| 4.23.3                           | 30 (Db)                    | Damp heat, cyclic                       | 55 $^{\circ}$ C; $\geq 90 \%$ RH<br>24 h; 1 cycle   |  |                                |
| 4.23.4                           | 1 (Aa)                     | Cold                                    | - 55 $^{\circ}$ C; 2 h  | $\pm (1 \% R + 0.05 \Omega)$   | $\pm (2 \% R + 0.1 \Omega)$    |
| 4.23.5                           | 13 (M)                     | Low air pressure                        | 1 kPa; (25 $\pm$ 10) $^{\circ}$ C; 1 h  |  |                                |
| 4.23.6                           | 30 (Db)                    | Damp heat, cyclic                       | 55 $^{\circ}$ C; $\geq 90 \%$ RH<br>24 h; 5 cycle   |  |                                |
| 4.23.7                           | -                          | DC load                                 | $U = \sqrt{P_{70} \times R}$  |  |                                |
| 4.25.1                           | -                          | Endurance at 70 $^{\circ}$ C            | $U = \sqrt{P_{70} \times R} \leq U_{max.}$<br>1.5 h on; 0.5 h off;  |  |                                |
|                                  |                            |   | 70 $^{\circ}$ C; 1000 h   | $\pm (1 \% R + 0.05 \Omega)$   | $\pm (2 \% R + 0.1 \Omega)$    |
|                                  |                            |   | 70 $^{\circ}$ C; 8000 h   | $\pm (2 \% R + 0.1 \Omega)$  | $\pm (4 \% R + 0.1 \Omega)$    |
| 4.18.2                           | 58 (Td)                    | Resistance to soldering heat            | Solder bath method<br>(260 $\pm$ 5) $^{\circ}$ C;<br>(10 $\pm$ 1) s   | $\pm (0.25 \% R + 0.05 \Omega)$  | $\pm (0.5 \% R + 0.05 \Omega)$ |
| 4.24                             | 78 (Cab)                   | Damp heat, steady state                 | (40 $\pm$ 2) $^{\circ}$ C;<br>(93 $\pm$ 3) % RH;<br>56 days   | $\pm (1 \% R + 0.05 \Omega)$   | $\pm (2 \% R + 0.05 \Omega)$   |
| 4.25.3                           | -                          | Endurance at upper category temperature | 155 $^{\circ}$ C; 1000 h  | $\pm (1 \% R + 0.05 \Omega)$   | $\pm (2 \% R + 0.05 \Omega)$   |



| TEST PROCEDURES AND REQUIREMENTS |                            |  |  |   |                                |
|----------------------------------|----------------------------|--|--|---|--------------------------------|
| EN 60115-1<br>CLAUSE             | IEC 60068-2<br>TEST METHOD | TEST   | PROCEDURE  | REQUIREMENTS<br>PERMISSIBLE CHANGE ( $\Delta R$ ) |                                |
|                                  |                            |  | Stability for product types:<br><b>RCV e3</b>  | 100 k $\Omega$ to 10 M $\Omega$                   |                                |
| 4.40                             | -                          | Electrostatic discharge (human body model)                 | IEC 61340-3-1; 3 pos. + 3 neg. discharges; ESD voltage acc. to style                             | $\pm (1 \% R + 0.05 \Omega)$                      |                                |
| 4.29                             | 45 (XA)                    | Component solvent resistance                               | Isopropyl alcohol; 50 °C; method 2   | No visible damage                                 |                                |
| 4.30                             | 45 (XA)                    | Solvent resistance of marking                              | Isopropyl alcohol; 50 °C; method 1, toothbrush   | Marking legible, no visible damage                |                                |
| 4.22                             | 6 (Fc)                     | Vibration, endurance by sweeping                           | f = 10 Hz to 2000 Hz; x, y, z $\leq$ 1.5 mm; A $\leq$ 200 m/s <sup>2</sup> ; 10 sweeps per axis  | $\pm (0.25 \% R + 0.05 \Omega)$                   | $\pm (0.5 \% R + 0.05 \Omega)$ |
| 4.37                             | -                          | Periodic electric overload                                 | $U = \sqrt{15 \times P_{70} \times R} \leq 2 \times U_{max.}$ ; 0.1 s on; 2.5 s off; 1000 cycles | $\pm (1 \% R + 0.05 \Omega)$                      |                                |
| 4.27                             | -                          | Single pulse high voltage overload, 10 $\mu$ s/700 $\mu$ s | $\dot{U} = 10 \times \sqrt{P_{70} \times R} \leq 2 \times U_{max.}$ ; 10 pulses                  | $\pm (1 \% R + 0.05 \Omega)$                      |                                |

All tests are carried out in accordance with the following specifications:

- EN 60115-1, generic specification
- EN 140400, sectional specification
- EN 140401-802, detail specification
- IEC 60068-2-x, environmental test procedures



## Disclaimer

ALL PRODUCT, PRODUCT SPECIFICATIONS AND DATA ARE SUBJECT TO CHANGE WITHOUT NOTICE TO IMPROVE RELIABILITY, FUNCTION OR DESIGN OR OTHERWISE.

Vishay Intertechnology, Inc., its affiliates, agents, and employees, and all persons acting on its or their behalf (collectively, "Vishay"), disclaim any and all liability for any errors, inaccuracies or incompleteness contained in any datasheet or in any other disclosure relating to any product.

Vishay makes no warranty, representation or guarantee regarding the suitability of the products for any particular purpose or the continuing production of any product. To the maximum extent permitted by applicable law, Vishay disclaims (i) any and all liability arising out of the application or use of any product, (ii) any and all liability, including without limitation special, consequential or incidental damages, and (iii) any and all implied warranties, including warranties of fitness for particular purpose, non-infringement and merchantability.

Statements regarding the suitability of products for certain types of applications are based on Vishay's knowledge of typical requirements that are often placed on Vishay products in generic applications. Such statements are not binding statements about the suitability of products for a particular application. It is the customer's responsibility to validate that a particular product with the properties described in the product specification is suitable for use in a particular application. Parameters provided in datasheets and/or specifications may vary in different applications and performance may vary over time. All operating parameters, including typical parameters, must be validated for each customer application by the customer's technical experts. Product specifications do not expand or otherwise modify Vishay's terms and conditions of purchase, including but not limited to the warranty expressed therein.

Except as expressly indicated in writing, Vishay products are not designed for use in medical, life-saving, or life-sustaining applications or for any other application in which the failure of the Vishay product could result in personal injury or death. Customers using or selling Vishay products not expressly indicated for use in such applications do so at their own risk. Please contact authorized Vishay personnel to obtain written terms and conditions regarding products designed for such applications.

No license, express or implied, by estoppel or otherwise, to any intellectual property rights is granted by this document or by any conduct of Vishay. Product names and markings noted herein may be trademarks of their respective owners.

## Material Category Policy

**Vishay Intertechnology, Inc. hereby certifies that all its products that are identified as RoHS-Compliant fulfill the definitions and restrictions defined under Directive 2011/65/EU of The European Parliament and of the Council of June 8, 2011 on the restriction of the use of certain hazardous substances in electrical and electronic equipment (EEE) - recast, unless otherwise specified as non-compliant.**

**Please note that some Vishay documentation may still make reference to RoHS Directive 2002/95/EC. We confirm that all the products identified as being compliant to Directive 2002/95/EC conform to Directive 2011/65/EU.**

**Vishay Intertechnology, Inc. hereby certifies that all its products that are identified as Halogen-Free follow Halogen-Free requirements as per JEDEC JS709A standards. Please note that some Vishay documentation may still make reference to the IEC 61249-2-21 definition. We confirm that all the products identified as being compliant to IEC 61249-2-21 conform to JEDEC JS709A standards.**



Компания «ЭлектроПласт» предлагает заключение долгосрочных отношений при поставках импортных электронных компонентов на взаимовыгодных условиях!

Наши преимущества:

- Оперативные поставки широкого спектра электронных компонентов отечественного и импортного производства напрямую от производителей и с крупнейших мировых складов;
- Поставка более 17-ти миллионов наименований электронных компонентов;
- Поставка сложных, дефицитных, либо снятых с производства позиций;
- Оперативные сроки поставки под заказ (от 5 рабочих дней);
- Экспресс доставка в любую точку России;
- Техническая поддержка проекта, помощь в подборе аналогов, поставка прототипов;
- Система менеджмента качества сертифицирована по Международному стандарту ISO 9001;
- Лицензия ФСБ на осуществление работ с использованием сведений, составляющих государственную тайну;
- Поставка специализированных компонентов (Xilinx, Altera, Analog Devices, Intersil, Interpoint, Microsemi, Aeroflex, Peregrine, Syfer, Eurofarad, Texas Instrument, Miteq, Cobham, E2V, MA-COM, Hittite, Mini-Circuits, General Dynamics и др.);

Помимо этого, одним из направлений компании «ЭлектроПласт» является направление «Источники питания». Мы предлагаем Вам помощь Конструкторского отдела:

- Подбор оптимального решения, техническое обоснование при выборе компонента;
- Подбор аналогов;
- Консультации по применению компонента;
- Поставка образцов и прототипов;
- Техническая поддержка проекта;
- Защита от снятия компонента с производства.



#### Как с нами связаться

**Телефон:** 8 (812) 309 58 32 (многоканальный)

**Факс:** 8 (812) 320-02-42

**Электронная почта:** [org@eplast1.ru](mailto:org@eplast1.ru)

**Адрес:** 198099, г. Санкт-Петербург, ул. Калинина, дом 2, корпус 4, литера А.