



PRODUCT DATASHEET

Laura series

last update 26/3/2012



Ordering number CX11645
Description CA11645_Laura-SS-RE-tape

Family	Laura	FWHM	(simulated) 12
Type	Assembly	Efficiency	93 %
LED	LUXEON Rebel	cd/lm	-
Color	White	Gerber File	Available
Diameter	21.6 mm		
Height	12.9 mm		
Style	Square		
Optic Material	PMMA		
Holder Material	PC		
Fastening	Tape		
Status	Ready		

Ordering number CX11352
Description CA11352_Laura-RS-RE-tape

Family	Laura	FWHM	7 degrees
Type	Assembly	Efficiency	93 %
LED	LUXEON Rebel	cd/lm	33.500
Color	White	Gerber File	Available
Diameter	21.6 mm		
Height	13.1 mm		
Style	Square		
Optic Material	PMMA		
Holder Material	PC		
Fastening	Tape		
Status	Ready		

Ordering number CX11364
Description CA11364-Laura-O-RE-tape

Family	Laura	FWHM	12+40 degrees
Type	Assembly	Efficiency	92 %
LED	LUXEON Rebel	cd/lm	-
Color	White	Gerber File	Available
Diameter	21.6 mm		
Height	13.1 mm		
Style	Square		
Optic Material	PMMA		
Holder Material	PC		
Fastening	Tape		
Status	Ready		

Ordering number CX11359
Description CA11359-Laura-D-RE-tape

Family	Laura	FWHM	15 degrees
Type	Assembly	Efficiency	90 %
LED	LUXEON Rebel	cd/lm	5.000
Color	White	Gerber File	Available
Diameter	21.6X21.6 mm		
Height	12.9 mm		
Style	Square		
Optic Material	PMMA		
Holder Material	PC		
Fastening	Tape		
Status	Ready		

Ordering number	CX11354		
Description	CA11354_Laura-M-RE-tape		
Family	Laura	FWHM	28 degrees
Type	Assembly	Efficiency	88 %
LED	LUXEON Rebel	cd/lm	2.700
Color	White	Gerber File	Available
Diameter	21.6 mm		
Height	13.1 mm		
Style	Square		
Optic Material	PMMA		
Holder Material	PC		
Fastening	Tape		
Status	Ready		

Ordering number	CX12568		
Description	CX12568_LAURA-W-WHT		
Family	Laura	FWHM	44 degrees
Type	Assembly	Efficiency	88 %
LED	LUXEON Rebel	cd/lm	-
Color	White	Gerber File	Available
Diameter	21.6 mm		
Height	12.9 mm		
Style	Square		
Optic Material	PMMA		
Holder Material	PC		
Fastening	Tape		
Status	Ready		

Ordering number	CA11768		
Description	CA11768_Laura-WW-RE-tape		
Family	Laura	FWHM	66 degrees
Type	Assembly	Efficiency	93 %
LED	LUXEON Rebel	cd/lm	-
Color	White	Gerber File	Available
Diameter	21.6 mm		
Height	12.9 mm		
Style	Square		
Optic Material	PMMA		
Holder Material	PC		
Fastening	Tape		
Status	Ready		

Ordering number	CX11524		
Description	CA11524_Laura-Refl-W-RE-tape		
Family	Laura	FWHM	68 degrees
Type	Reflector	Efficiency	81 %
LED	LUXEON Rebel	cd/lm	-
Color	White	Gerber File	Available
Diameter	21.6 mm		
Height	12.9 mm		
Style	Square		
Optic Material	PC		
Holder Material	PC		
Fastening	Tape		
Status	Ready		



PRODUCT DATASHEET

Laura series

last update 26/3/2012



NOTE: The typical divergence will be changed by different color, chip size and chip position tolerance. The typical total divergence is the full angle measured where the luminous intensity is half of the peak value.



PRODUCT DATASHEET

Laura series

last update 26/3/2012



GENERAL INFORMATION

- Product series especially designed & optimized for LUXEON Rebel series of LEDs.
- Special care taken to make light distribution as uniform as possible.
- Reflector is made of aluminium coated PC (120 degrees of Celcius / 248 degrees of Fahrenheit) with protective lacquer (110 degrees of Celcius / 230 degrees of Fahrenheit).
- Fastening to heat sink with a PU foam adhesive tape of automotive grade. Please find fastening details by clicking link: http://www.ledil.com/datasheets/DataSheet_TAPE.pdf

NOTE 1: We advise customer to ensure the suitability and sufficiency of the bond in the end product. For example, mechanical stress, vibration and holes on the surface of the circuit board weaken the strength of the tape.

NOTE 2: Assembly to the surface must be made straight, so the tape bonds constant and balanced with fastening surface. Slanted assembly might cause unbalanced bond to the surface. All surfaces where tape is applied must be clean, dry and free from grease and dirt.

If cleaning of PCB surfaces is needed, please follow strictly the cleaning instructions of your LED manufacturer - this is important as cleaning shall under no circumstances damage LEDs or other electronics components on the PCB.

Further note that optical components shall not be cleaned with any chemicals - only micro fiber cloth may be used to remove fingerprints or other traces from handling.

D

C

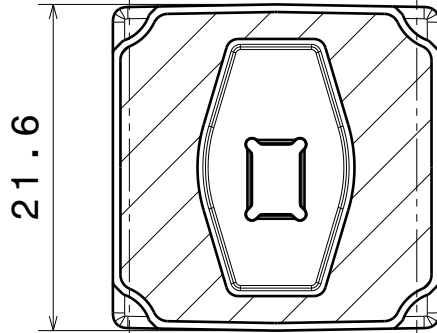
B

A

4

4

Oval-version
beam direction



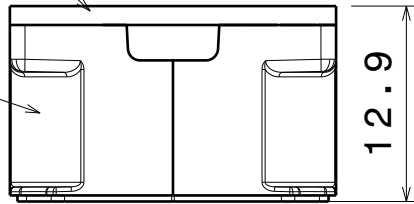
Bottom view

3

3

Optic

Holder



Front view

2

2

Materials
 lens: PMMA
 holder: PC White
 Tape: PU Foam

1

1

This drawing is our property.
 It can't be reproduced
 or communicated without
 our written agreement.



L
T
F
F

e
e
i
i
N
n

d

h

DRAWING TITLE

Assy Datasheet Laura-tape series

DRAWN BY

DATE

p

02.08.2010

CHECKED BY

DATE

s

n

22.07.2010

DESIGNED BY

DATE

hh

21.01.2010

SIZE

A4

DRAWING NUMBER

CA11352

REV

1

SCALE

2:1

WEIGHT (g)

SHEET

1/1

D

A



Компания «ЭлектроПласт» предлагает заключение долгосрочных отношений при поставках импортных электронных компонентов на взаимовыгодных условиях!

Наши преимущества:

- Оперативные поставки широкого спектра электронных компонентов отечественного и импортного производства напрямую от производителей и с крупнейших мировых складов;
- Поставка более 17-ти миллионов наименований электронных компонентов;
- Поставка сложных, дефицитных, либо снятых с производства позиций;
- Оперативные сроки поставки под заказ (от 5 рабочих дней);
- Экспресс доставка в любую точку России;
- Техническая поддержка проекта, помощь в подборе аналогов, поставка прототипов;
- Система менеджмента качества сертифицирована по Международному стандарту ISO 9001;
- Лицензия ФСБ на осуществление работ с использованием сведений, составляющих государственную тайну;
- Поставка специализированных компонентов (Xilinx, Altera, Analog Devices, Intersil, Interpoint, Microsemi, Aeroflex, Peregrine, Syfer, Eurofarad, Texas Instrument, Miteq, Cobham, E2V, MA-COM, Hittite, Mini-Circuits, General Dynamics и др.);

Помимо этого, одним из направлений компании «ЭлектроПласт» является направление «Источники питания». Мы предлагаем Вам помощь Конструкторского отдела:

- Подбор оптимального решения, техническое обоснование при выборе компонента;
- Подбор аналогов;
- Консультации по применению компонента;
- Поставка образцов и прототипов;
- Техническая поддержка проекта;
- Защита от снятия компонента с производства.



Как с нами связаться

Телефон: 8 (812) 309 58 32 (многоканальный)

Факс: 8 (812) 320-02-42

Электронная почта: org@eplast1.ru

Адрес: 198099, г. Санкт-Петербург, ул. Калинина, дом 2, корпус 4, литера А.