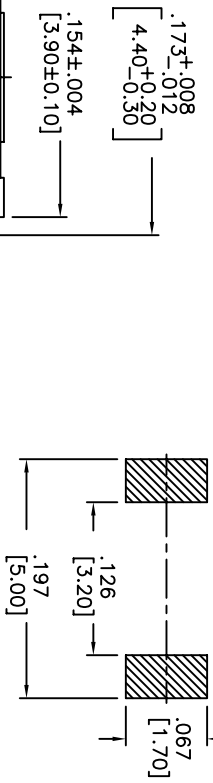
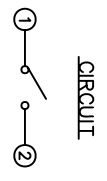
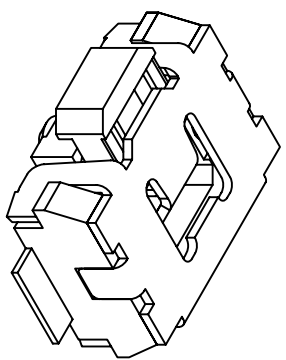
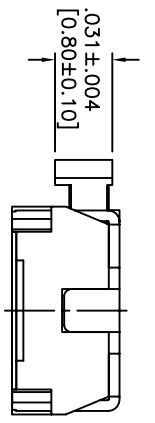
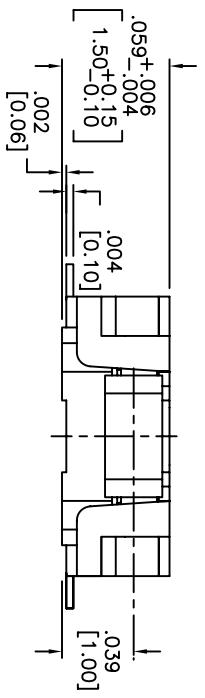
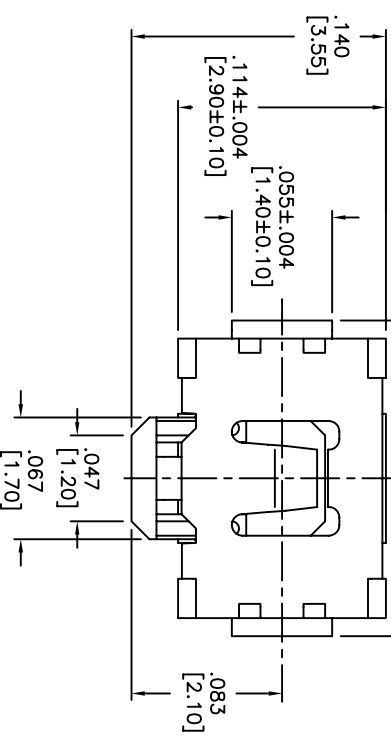


THIS DOCUMENT IS THE PROPERTY OF APDM COMPONENTS AND SHALL NOT BE COPIED, REPRODUCED, DISCLOSED OR USED AS THE BASIS FOR MANUFACTURING OR SALE WITHOUT PERMISSION OF A DULY AUTHORIZED REPRESENTATIVE OF APDM COMPONENTS INC.



HATCHED AREA SHOWS SOLDERING LAND
P.C.B. LAYOUT
UNLESS OTHERWISE SPECIFIED
ALL P.C. TOLERANCES ARE ±.002 [0.05]



DATE	SYM	REVISION RECORD	DWN.	CK.
5/08	A	ECO# 778	CD	PD

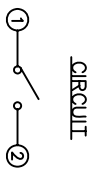
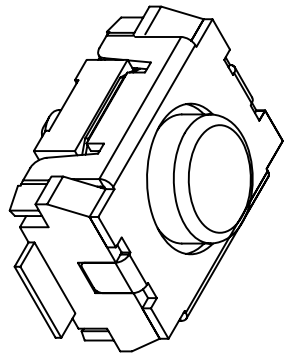
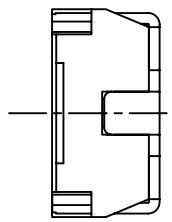
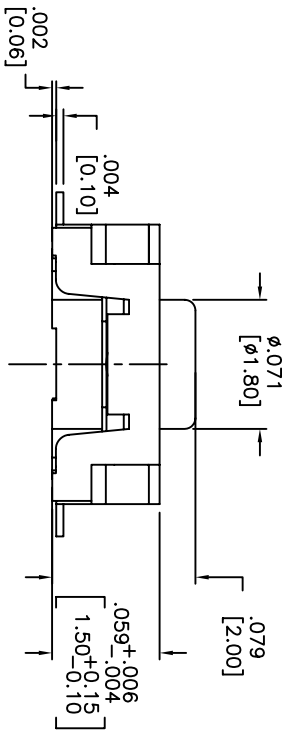
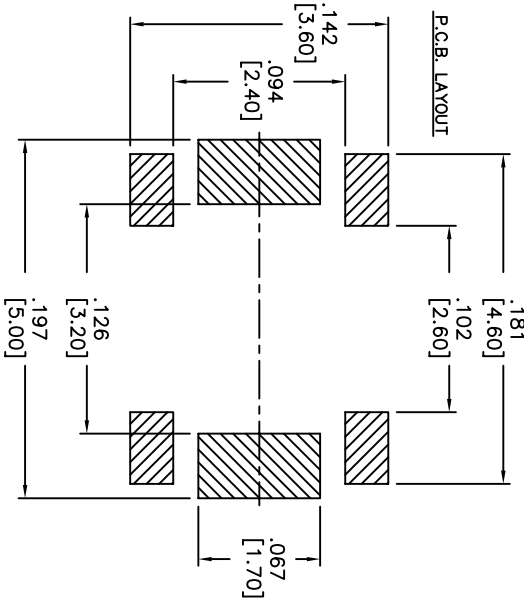
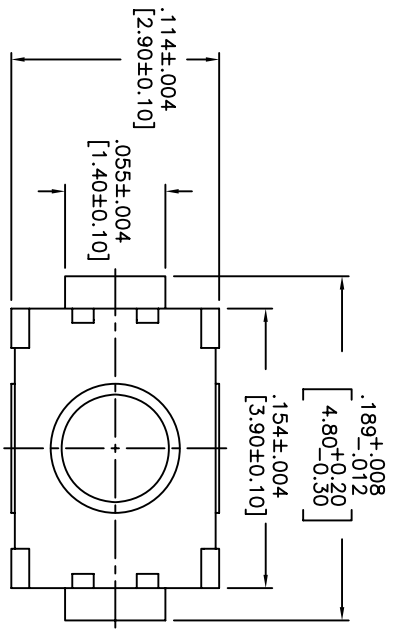
DESCRIPTION: SIDE PUSH MECHANICAL CONTACT SWITCH.
SPECIFICATIONS:
OPERATION FORCE: 220± 65gf
STROKE: 0.2±0.08mm
OPERATION TEMP.: -25°C TO +70°C.
STORAGE TEMP.: -30°C TO +80°C.
ELECTRICAL LIFE: 100,000 CYCLES.
RATING: 50mA, 12VDC.
CONTACT RESISTANCE: 100mΩ MAX.
INSULATION RESISTANCE: 100MΩ MIN. AT 100VDC.
DIELECTRIC STRENGTH: 100VAC/1 MINUTE.
CONTACT ARRANGEMENT: 1 POLE 1 THROW.
VIBRATION TEST: PASSED METHOD 201A
MIL-STD-202F.
SHOCK TEST: 50G PER METHOD 213B CONDITION A OF MIL-STD-202F
MATERIALS:
COVER: STAINLESS STEEL
BASE: LCP HIGH-TEMP. THERMOPLASTIC.
COLOR, WHITE.
STEM: LCP HIGH-TEMP. THERMOPLASTIC.
COLOR, BLACK.
CONTACT DISK: STAINLESS STEEL WITH SILVER CLADDING
TERMINAL: BRASS WITH SILVER PLATING
PACKAGING: TAPE AND REEL (3,500 PIECES PER REEL)
ROHS COMPLIANT
LEAD FREE SOLDERING COMPATIBLE
HAND SOLDERING: 320°c MAX WITH 30 WATT IRON FOR 2 SECONDS
IR REFLOW: 260°C MAX

CUSTOMER PART NO.: 263262

<p>9A. INSPECT</p> <p>DESIGNER'S INITIAL</p> <p>TOLERANCES (UNLESS OTHERWISE SPECIFIED)</p> <p>.XX±.XX [0.05]</p> <p>.XXX±.XXX [0.20]</p> <p>.XXXX±.XXXX [0.002]</p> <p>ANGLE = 30.5°</p>		<p>APDM</p> <p>63 Neck Rd. 01835 Haverhill, MA Phone: 978-372-3534 Fax: 978-372-3534</p>		<p>DRN. CJD</p> <p>BR. PJD</p>	
<p>TITLE</p> <p>TACT SWITCH</p>		<p>SHEET 1 OF 1</p> <p>SIZE B</p> <p>SCALE 15:1</p>		<p>THIRD ANGLE PROJECTION</p>	
<p>DATE</p> <p>7/31/06</p>		<p>DRAWING NO.</p> <p>AMPTFVTR</p>		<p>REV</p> <p>A</p>	

1 2 3 4 5 6 7 8

THIS DOCUMENT IS THE PROPERTY OF APEN COMPONENTS AND SHALL NOT BE COPIED, REPRODUCED, DISCLOSED OR USED AS THE BASIS FOR MANUFACTURING OR SALE WITHOUT PERMISSION OF A DULY AUTHORIZED REPRESENTATIVE OF APEN COMPONENTS INC.



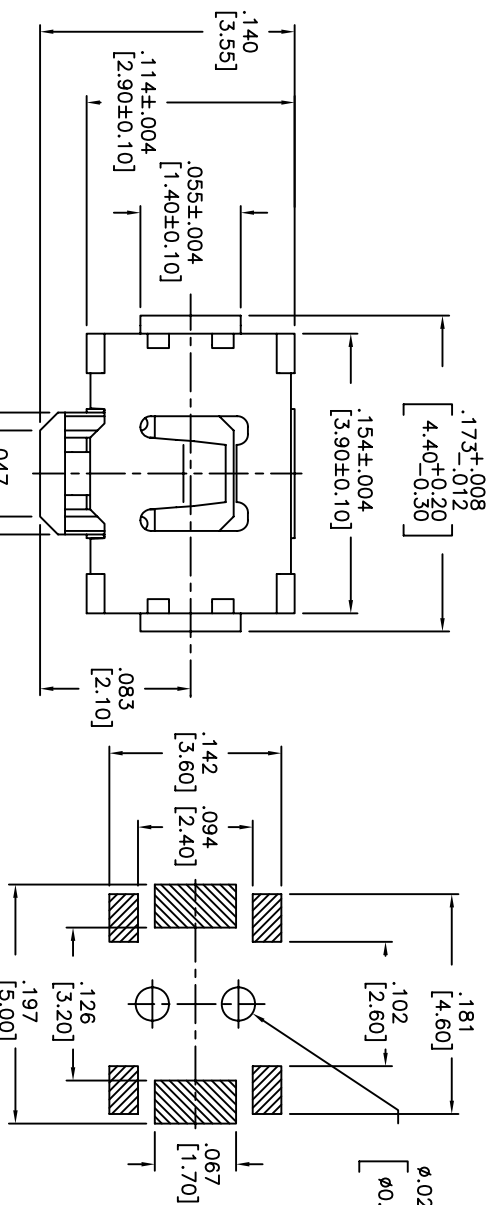
DATE	SYM	REVISION RECORD	DWN.	CK.
5/08	B	ECO# 778	CD	PD

DESCRIPTION: VERTICAL PUSH MECHANICAL CONTACT SWITCH.
 SPECIFICATIONS:
 OPERATION FORCE: 160±50gf
 OPERATION TEMP.: -25°C TO +70°C.
 STORAGE TEMP.: -30°C TO +80°C.
 ELECTRICAL LIFE: 100,000 CYCLES.
 RATING: 50ma, 12VDC.
 VIBRATION RESISTANCE: PASSES METHOD 201A MIL-STD-202F
 SHOCK RESISTANCE: 50G PER METHOD 213B MIL-STD-202F
 CONTACT RESISTANCE: 100mΩ MAX.
 INSULATION RESISTANCE: 100MΩ MIN. AT 100VDC.
 DIELECTRIC STRENGTH: 100VAC/1 MINUTE.
 CONTACT ARRANGEMENT: 1 POLE 1 THROW.
 MATERIALS:
 COVER: STAINLESS STEEL
 BASE: LCP HIGH-TEMP. THERMOPLASTIC.
 COLOR, WHITE.
 STEM: LCP HIGH-TEMP. THERMOPLASTIC.
 COLOR, BLACK
 CONTACT DISK: STAINLESS STEEL WITH SILVER CLADDING
 TERMINAL: BRASS WITH SILVER PLATING
 TAPE: TEFLON.
 TAPE & REEL PACKAGING, 2,000 PER REEL
 SOLDERING:
 HAND SOLDERING: 30 WATT IRON AT 320°C FOR 2 SECONDS
 IR REFLOW: 240°C MAX
 ROHS COMPLIANT

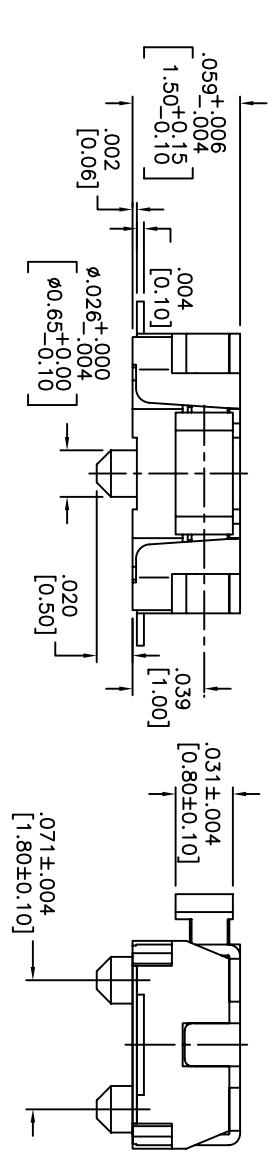
D.A. INSPECT:		DESIGNS: CRITICAL DIMENSION:	63 Neck Rd. Hawthorne, NJ 07035 Phone: 973-772-5554 Fax: 973-772-5554	DRN. CJD BR: BR OR: PJD
TOLERANCES (unless as noted) .XX± = ±0.0015 .XXX± = ±0.0008 [0.20] .XXXX± = ±0.0008 [0.02] ANGLE = 30.5°		TITLE VERTICAL PUSH TACT SWITCH	SHEET 1 OF 1 SIZE B SCALE 15:1 THIRD ANGLE PROJECTION	DO NOT SCALE DATE: 2/4/08 DRAWING NO. AMPPTFGP2VTR REV B

THIS DOCUMENT IS THE PROPERTY OF APDM COMPONENTS AND SHALL NOT BE COPIED, REPRODUCED, DISCLOSED OR USED AS THE BASIS FOR MANUFACTURING OR SALE WITHOUT PERMISSION OF A DULY AUTHORIZED REPRESENTATIVE OF APDM COMPONENTS INC.

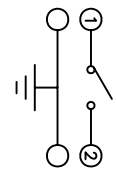
DATE	SYM	REVISION RECORD	DWN.	CK.
01/06	A	ECO # 526	CD	PD
5/08	B	ECO# 778	CD	PD



HATCHED AREA SHOWS SOLDERING LAND.
P.C.B. LAYOUT
UNLESS OTHERWISE SPECIFIED
ALL P.C. TOLERANCES ARE ±.002 [0.05]



CIRCUIT



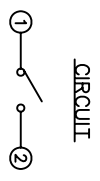
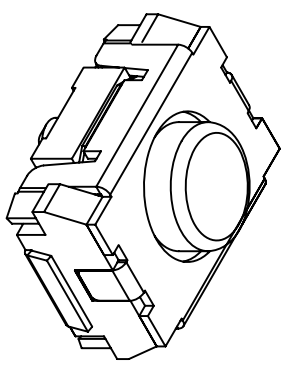
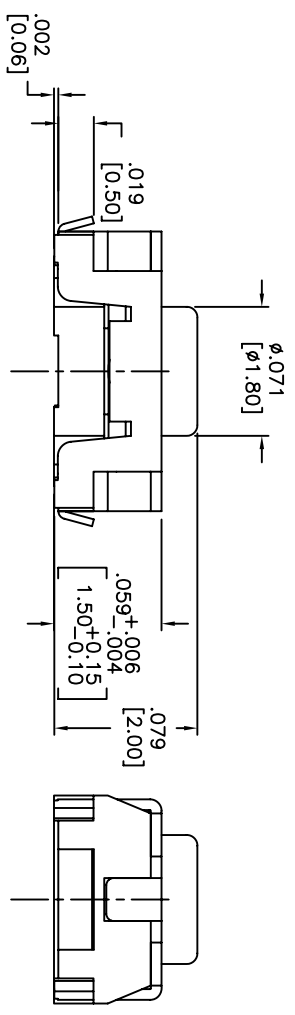
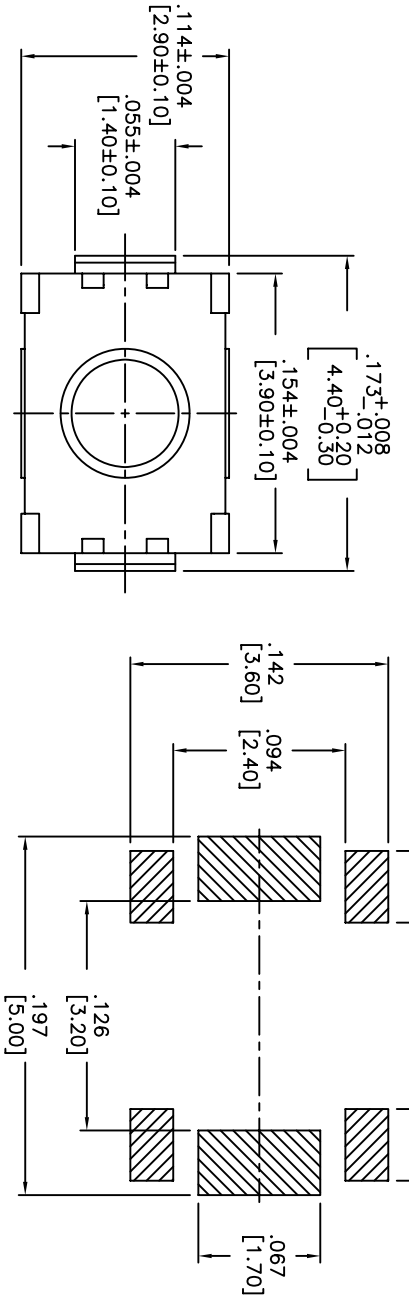
DESCRIPTION: SIDE PUSH MECHANICAL CONTACT SWITCH.
SPECIFICATIONS:
OPERATION FORCE: 220± 65gf
STROKE: 0.2±0.09mm
OPERATION TEMP.: -25°C TO +70°C.
STORAGE TEMP.: -30° TO +80°.
ELECTRICAL LIFE: 100,000 CYCLES.
RATING: 50mA, 12VDC.
CONTACT RESISTANCE: 100mΩ MAX.
INSULATION RESISTANCE: 100MΩ MIN. AT 100VDC.
DIELECTRIC STRENGTH: 100VAC/1 MINUTE.
CONTACT ARRANGEMENT: 1 POLE 1 THROW.
VIBRATION TEST: PASSED METHOD 201A MIL-STD-202F.
SHOCK TEST: 50G PER METHOD 213B CONDITION A OF MIL-STD-202F
MATERIALS:
COVER: STAINLESS STEEL
BASE: LCP HIGH-TEMP. THERMOPLASTIC.
COLOR: WHITE
STEM: LCP HIGH-TEMP. THERMOPLASTIC.
COLOR: BLACK.
CONTACT DISK: STAINLESS STEEL WITH SILVER CLADDING
TERMINAL: BRASS WITH SILVER PLATING
PACKAGING: TAPE AND REEL (3,500 PEICES PER REEL)
ROHS COMPLIANT
HAND SOLDERING: 320°C MAX WITH 30 WATT IRON FOR 2 SECONDS
IR REFLOW: 240°C MAX

DESIGNER'S INITIAL		DATE	
DIMENSION		SCALE	
TOLERANCES (UNLESS OTHERWISE SPECIFIED)		DRAWING NO.	
.XX±.YY(Z) [0.5]		AMPTCFGVTR	
.XXX±.YY(Z) [0.20]		REV	
.XXX±.YY(Z) [0.02]		B	
ANGLE = 30.5°			
DO NOT SCALE			

APDM 63 Neck Rd. 01835
Haverhill, MA
Tel: 978-372-5854 Fax: 978-372-5854
PRN: CJD
BR: PD
THIRD ANGLE PROJECTION

TITLE: TACT SWITCH

THIS DOCUMENT IS THE PROPERTY OF APDM COMPONENTS AND SHALL NOT BE COPIED, REPRODUCED, DISCLOSED OR SALE WITHOUT PERMISSION OF A DULY AUTHORIZED REPRESENTATIVE OF APDM COMPONENTS INC.



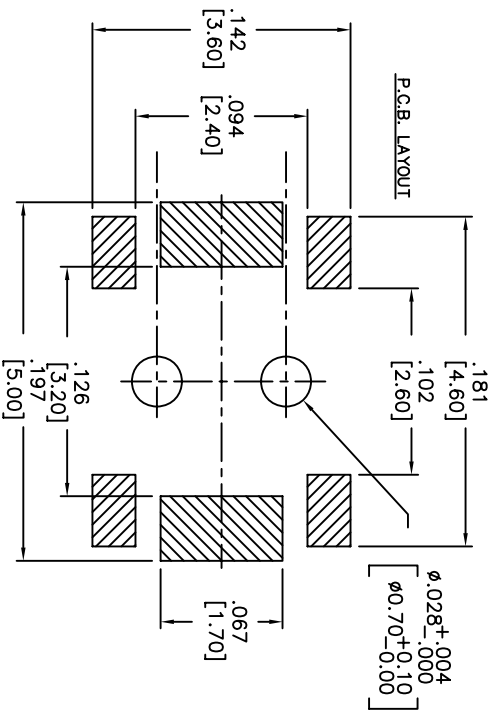
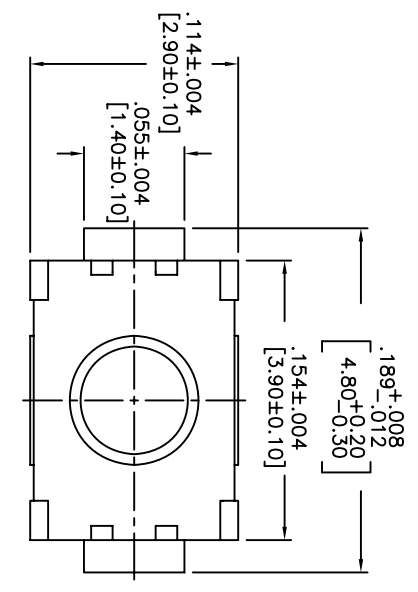
DATE	SYM	REVISION RECORD	DWNL	CK
5/08	B	ECO# 778	CD	PD

DESCRIPTION: VERTICAL PUSH MECHANICAL CONTACT SWITCH.
 SPECIFICATIONS:
 OPERATION FORCE: 160± 50gf
 OPERATION TEMP.: -25°C TO +70°C.
 STORAGE TEMP.: -30°C TO +80°C.
 ELECTRICAL LIFE: 100,000 CYCLES.
 RATING: 50mA, 12VDC.
 VIBRATION RESISTANCE: PASSES METHOD 201A MIL-STD-202F
 SHOCK RESISTANCE: 50G PER METHOD 213B MIL-STD-202F
 CONTACT RESISTANCE: 100mΩ MAX.
 INSULATION RESISTANCE: 100MΩ MIN. AT 100VDC.
 DIELECTRIC STRENGTH: 100VAC/1 MINUTE.
 CONTACT ARRANGEMENT: 1 POLE 1 THROW.
 MATERIALS:
 COVER: STAINLESS STEEL
 BASE: LCP HIGH-TEMP. THERMOPLASTIC.
 COLOR, WHITE.
 STEM: LCP HIGH-TEMP. THERMOPLASTIC.
 COLOR, BLACK.
 CONTACT DISK: STAINLESS STEEL
 WITH SILVER CLADDING
 TERMINAL: BRASS WITH SILVER PLATING
 TAPE: TEFLON.
 TAPE & REEL PACKAGING, 2,000 PER REEL
 SOLDERING:
 HAND SOLDERING: 30 WATT IRON AT 320°C FOR 2 SECONDS
 IR REFLOW: 240°C MAX
 ROHS COMPLIANT

DESIGNER'S CRITICAL DIMENSION				63 Neck Rd. 01835 Haverhill, MA Phone: 978-372-3534 Fax: 978-372-3534		PRN: CJD BR: PJD	
TOLERANCES (UNLESS OTHERWISE SPECIFIED) .XX± = ±0.001 (0.5) .XXX± = ±0.0008 (0.20) .XXXX± = ±0.0008 (0.02) ANGLE = 40.5°		TITLE VERTICAL PUSH TACT SWITCH		SHEET 1 OF 1 SIZE B SCALE 15:1 THIRD ANGLE PROJECTION		DATE: 2/4/08 DRAWING NO: AMPPTLGP2VTR REV: B	

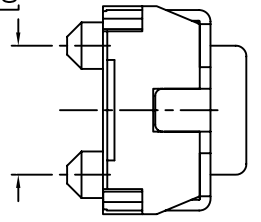
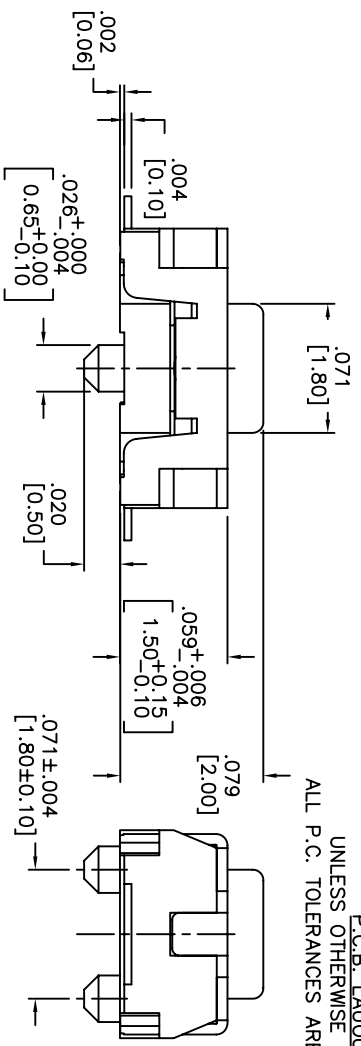
1 2 3 4 5 6 7 8

THIS DOCUMENT IS THE PROPERTY OF APDM COMPONENTS AND SHALL NOT BE COPIED, REPRODUCED, DISCLOSED OR USED AS THE BASIS FOR MANUFACTURING OR SALE WITHOUT PERMISSION OF A DULY AUTHORIZED REPRESENTATIVE OF APDM COMPONENTS INC.

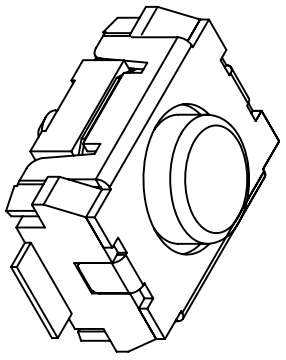


HATCHED AREA SHOWS SOLDERING LAND

P.C.B. LAYOUT
UNLESS OTHERWISE SPECIFIED
ALL P.C. TOLERANCES ARE ±.002 [0.50]



CIRCUIT



DATE	SYM	REVISION RECORD	DWN.	CK.
5/08	B	ECO# 778	CD	PD

DESCRIPTION: VERTICAL PUSH MECHANICAL CONTACT SWITCH.

SPECIFICATIONS:

OPERATION FORCE: 160± 50gf
 OPERATION TEMP.: -25°C TO +70°C.
 STORAGE TEMP.: -30°C TO +80°C.
 ELECTRICAL LIFE: 200,000 CYCLES.
 RATING: 50ma, 12VDC.
 VIBRATION RESISTANCE: PASSES METHOD 201A
 MIL-STD-202F
 SHOCK RESISTANCE: 50G PER METHOD 213B
 MIL-STD-202F
 CONTACT RESISTANCE: 100mΩ MAX.
 INSULATION RESISTANCE: 100MΩ MIN. AT 100VDC.
 DIELECTRIC STRENGTH: 100VAC/1 MINUTE.
 CONTACT ARRANGEMENT: 1 POLE 1 THROW.
 TRAVEL: .005 ±.002 [0.13 ±0.05]

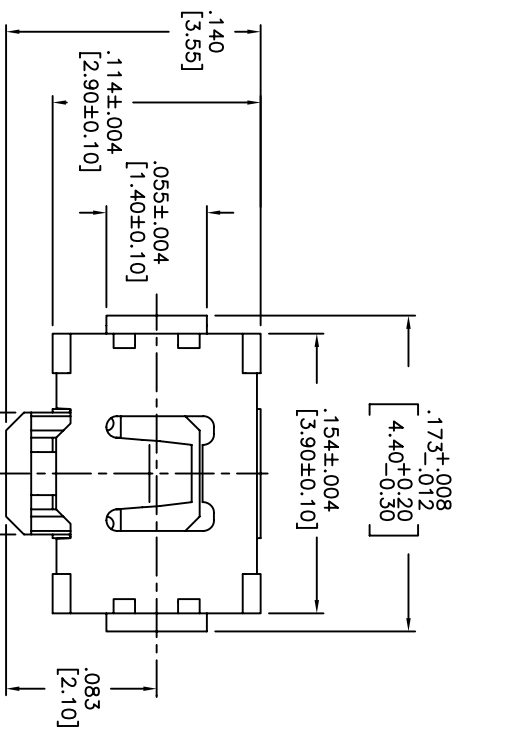
MATERIALS:

COVER: STAINLESS STEEL
 BASE: LCP HIGH-TEMP. THERMOPLASTIC.
 COLOR, WHITE.
 STEM: LCP HIGH-TEMP. THERMOPLASTIC.
 COLOR, BLACK.
 CONTACT DISK: STAINLESS STEEL WITH SILVER CLADDING
 TERMINAL: BRASS WITH SILVER PLATING
 TAPE: TEFLON.
 TAPE & REEL PACKAGING: 2,000 PER REEL
 SOLDERING:
 HAND SOLDERING: 30 WATT IRON AT 320°C FOR 2 SECONDS
 IR REFLOW: 240°C MAX
 ROHS COMPLIANT

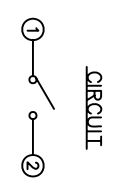
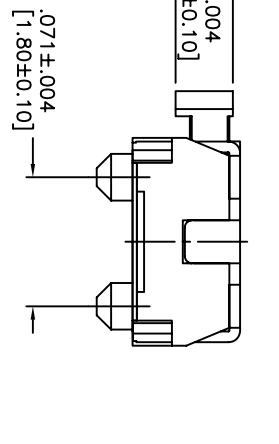
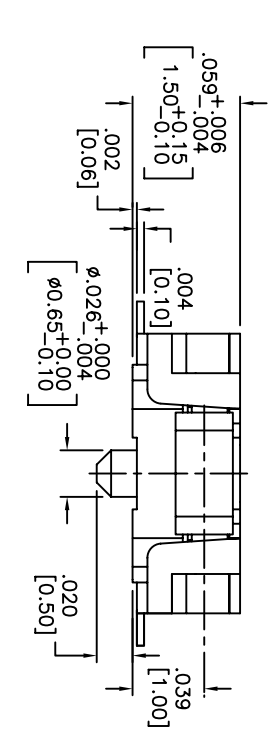
DESIGNER'S INITIALS	63 Neck Rd.	PHN.	CJD
DATE	6/30/05	DRAWING NO.	AMPTCFGP2VTR
TOLERANCES (UNLESS OTHERWISE SPECIFIED)	.XX± = ±0.005 [0.5] .XXX± = ±0.008 [0.20] .XXXX± = ±0.0008 [0.02] ANGLE = 30.5°		
TITLE	TACT SWITCH		
INCH	1 OF 1	SIZE	SCALE
SHEET	B	SCALE	15:1
THIRD ANGLE PROJECTION			

1 2 3 4 5 6 7 8

THIS DOCUMENT IS THE PROPERTY OF APEM COMPONENTS AND SHALL NOT BE COPIED, REPRODUCED, DISCLOSED OR SALE WITHOUT PERMISSION OF A DULY AUTHORIZED REPRESENTATIVE OF APEM COMPONENTS INC.



HATCHED AREA SHOWS SOLDERING LAND
 P.C.B LAYOUT
 UNLESS OTHER WISE SPECIFIED
 ALL P.C TOLERANCES ARE ±.002 [0.05]



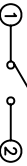
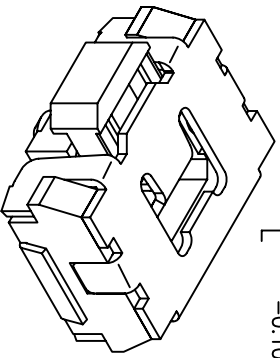
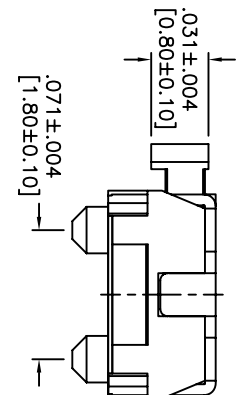
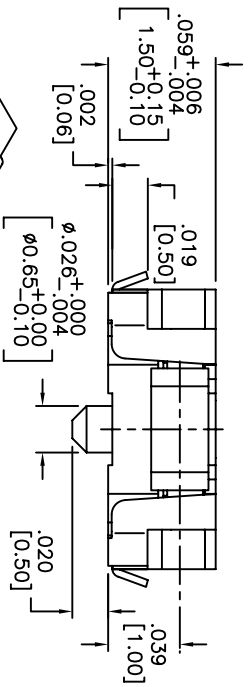
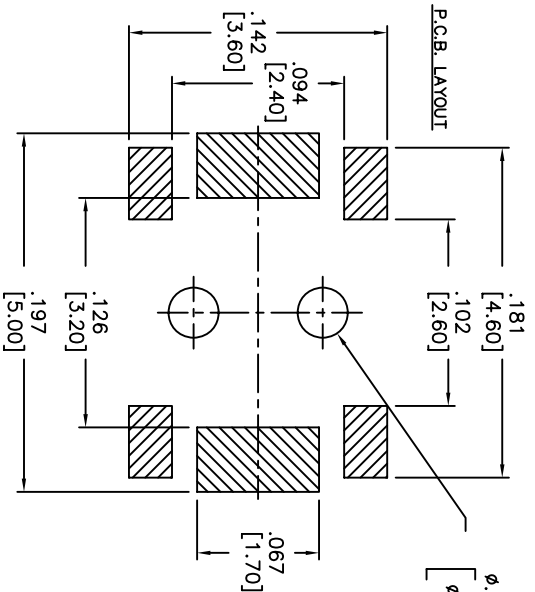
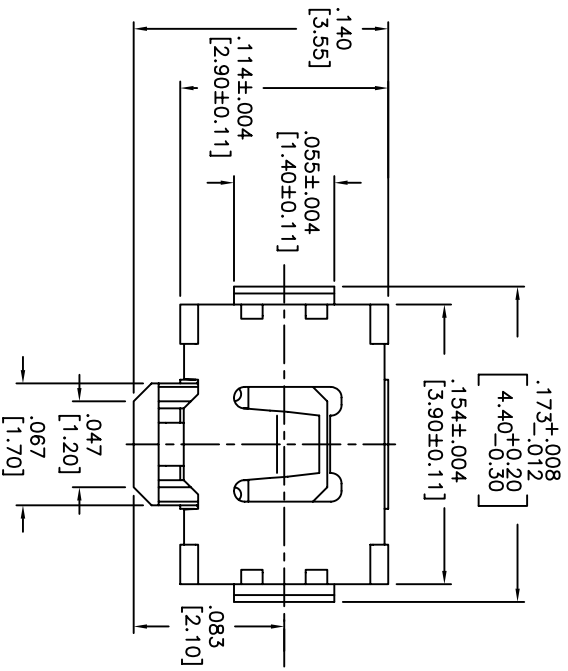
DATE	SYM	REVISION RECORD	DWN.	CK.
5/08	B	ECO# 778	CD	PD

DESCRIPTION: SIDE PUSH MECHANICAL CONTACT SWITCH.
 SPECIFICATIONS:
 OPERATION FORCE: 220± 65gf
 STROKE: 0.2±0.10mm
 OPERATION TEMP.: -25°C TO +70°C.
 STORAGE TEMP.: -30°C TO +80°C.
 ELECTRICAL LIFE: 100,000 CYCLES.
 RATING: 50mA, 12VDC.
 CONTACT RESISTANCE: 100mΩ MAX.
 INSULATION RESISTANCE: 100MΩ MIN. AT 100VDC.
 DIELECTRIC STRENGTH: 100VAC/1 MINUTE.
 CONTACT ARRANGEMENT: 1 POLE 1 THROW.
 VIBRATION TEST: PASSED METHOD 201A
 MIL-STD-202F.
 SHOCK TEST: 50G PER METHOD 213B CONDITION A OF MIL-STD-202F
 MATERIALS:
 COVER: STAINLESS STEEL
 BASE: LCP HIGH-TEMP. THERMOPLASTIC.
 COLOR, WHITE.
 STEM: LCP HIGH-TEMP. THERMOPLASTIC.
 COLOR, BLACK.
 CONTACT DISK: STAINLESS STEEL
 WITH SILVER CLADDING
 TERMINAL: BRASS WITH SILVER PLATING
 PACKAGING: TAPE AND REEL
 (3,500 PEICES PER REEL)
 ROHS COMPLIANT
 LEAD FREE SOLDERING COMPATIBLE
 HAND SOLDERING: 320°C MAX WITH 30 WATT IRON
 FOR 2 SECONDS
 IR REFLOW: 260°C MAX

DESIGNER'S INITIAL		DIM.		P.D.	
TOLERANCES (UNLESS OTHERWISE SPECIFIED)		SCALE		THIRD ANGLE PROJECTION	
.XX±.XX(X)		15:1		—	
.XXX±.XXX(X)		15:1		—	
.XXXX±.XXXX(X)		15:1		—	
ANGLE = 30.5°		DRAWING NO.		REV.	
DO NOT SCALE		5/2/06		AMPTCFVTR	
DATE		DRAWING NO.		REV.	
5/2/06		AMPTCFVTR		B	

9A. INSECT		63 Neck Rd.		P.N. CJD	
DIMENSION		Haverhill, MA 01830		B.R. PJD	
TITLE		APEM		P.D.	
TACT SWITCH		Form 978-372-3534		—	
SHEET 1 OF 1		SIZE B		SCALE 15:1	
DRAWING NO.		REV.		THIRD ANGLE PROJECTION	
5/2/06		AMPTCFVTR		—	

THIS DOCUMENT IS THE PROPERTY OF APDM COMPONENTS AND SHALL NOT BE COPIED, REPRODUCED, DISCLOSED OR USED AS THE BASIS FOR MANUFACTURING OR SALE WITHOUT PERMISSION OF A DULY AUTHORIZED REPRESENTATIVE OF APDM COMPONENTS INC.



CIRCUIT

DATE	SYM	REVISION RECORD	DWN.	CK.
1/06	B	ECO# 526	CD	PD
5/08	C	ECO# 778	CD	PD

DESCRIPTION: SIDE PUSH MECHANICAL CONTACT SWITCH, WITH BENDING AND GROUNDING TERMINALS.

SPECIFICATIONS:

OPERATION FORCE: 220± 65gf

OPERATION TEMP.: -25°C TO +70°C.

STORAGE TEMP.: -30°C TO +80°C.

ELECTRICAL LIFE: 100,000 CYCLES.

RATING: 50mA, 12VDC.

VIBRATION RESISTANCE: PASSES METHOD 201A MIL-STD-202F

SHOCK RESISTANCE: 50G PER METHOD 213B MIL-STD-202F

CONTACT RESISTANCE: 100mΩ MAX.

INSULATION RESISTANCE: 100MΩ MIN. AT 100VDC.

DIELECTRIC STRENGTH: 100VAC/1 MINUTE.

CONTACT ARRANGEMENT: 1 POLE 1 THROW.

STROKE: .008 +.004 [0.2 +0.05]

MATERIALS:

COVER: STAINLESS STEEL

BASE: LCP HIGH-TEMP. THERMOPLASTIC.

COLOR: WHITE.

STEM:LCP HIGH-TEMP. THERMOPLASTIC.

COLOR: BLACK.

CONTACT DISK: STAINLESS STEEL

WITH SILVER CLADDING

TERMINAL: BRASS WITH SILVER PLATING

TAPE: TEFLON.

TAPE & REEL PACKAGING, 3500 PER REEL

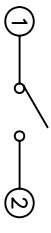
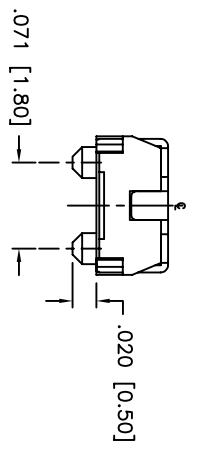
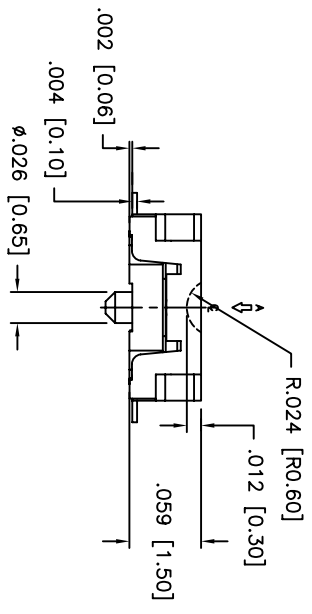
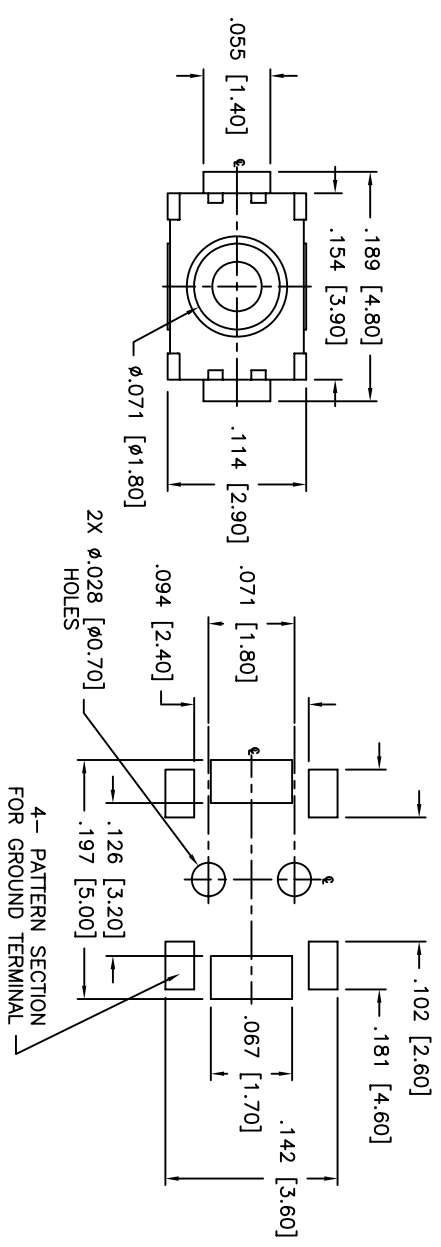
HAND SOLDERING: 30 WATT IRON AT 320°C FOR 2 SECONDS

IR REFLOW: 240°C MAX

ROHS COMPLIANT

Q.A. INSPECT		DESIGNER'S INITIAL		DIMENSION		TOLERANCES (UNLESS OTHERWISE SPECIFIED)	
△				FRACTIONAL		XXX±.000 [0.002]	
				DECIMAL		.XXX±.000 [0.002]	
				ANGLES		∠ = 40.5°	
DATE		DRAWING NO.		SHEET		SCALE	
06/30/05		AMPTCLGVTR		1 OF 1		15:1	
				TITLE		THIRD ANGLE PROJECTION	
				TACT SWITCH		—	
DO NOT SCALE		P.R.N. CJD		PKR. PJD			
		63 Neck Rd. 01830		P.R.N. CJD			
		APDM™		PKR. PJD			
		THERMAL DIV.					
		781-372-5554					
		FAX: 781-372-5554					

THIS DOCUMENT IS THE PROPERTY OF APDM COMPONENTS AND SHALL NOT BE COPIED, REPRODUCED, DISCLOSED OR USED AS THE BASIS FOR MANUFACTURING OR SALE WITHOUT PERMISSION OF A DULY AUTHORIZED REPRESENTATIVE OF APDM COMPONENTS INC.



SCHEMATIC

DATE	SYM	REVISION RECORD	DWN.	CK.
1/06	A	ECO # 526	CD	PD
5/08	B	ECO# 778	CD	PD

DESCRIPTION: SPST, NORMALLY OPEN, MOMENTARY, SURFACE MOUNT TACT SWITCH WITH LOCATING PINS

SPECIFICATIONS:
 CONTACT RATING: 50mA @ 12VDC
 INITIAL CONTACT RESISTANCE: 100MOHMS MAX.
 INSULATION RESISTANCE: 100MOHMS MIN. @ 500VDC
 DIELECTRIC STRENGTH: 100VAC FOR 1 MINUTE
 ELECTRICAL LIFE: 200,000 CYCLES MIN.
 OPERATING TEMPERATURE RANGE: -25°C to +70°C
 STOP STRENGTH: MAX 3kgf VERTICAL STATIC LOAD
 CONT. FOR 15 SEC.

ACTUATION FORCE: 160± 50gf
 STORAGE TEMPERATURE RANGE: -30°C TO +80°C
 SHOCK RESISTANCE: 50G PER METHOD 213B, MIL-STD-202F
 VIBRATION RESISTANCE: PASSES METHOD 201A, MIL-STD-202F

SOLDERING:
 IR REFLOW: 240°C MAX.
 HAND SOLDERING: 350°C MAX. FOR 3 SECONDS MAX.
 (30 WATT IRON MAX.)

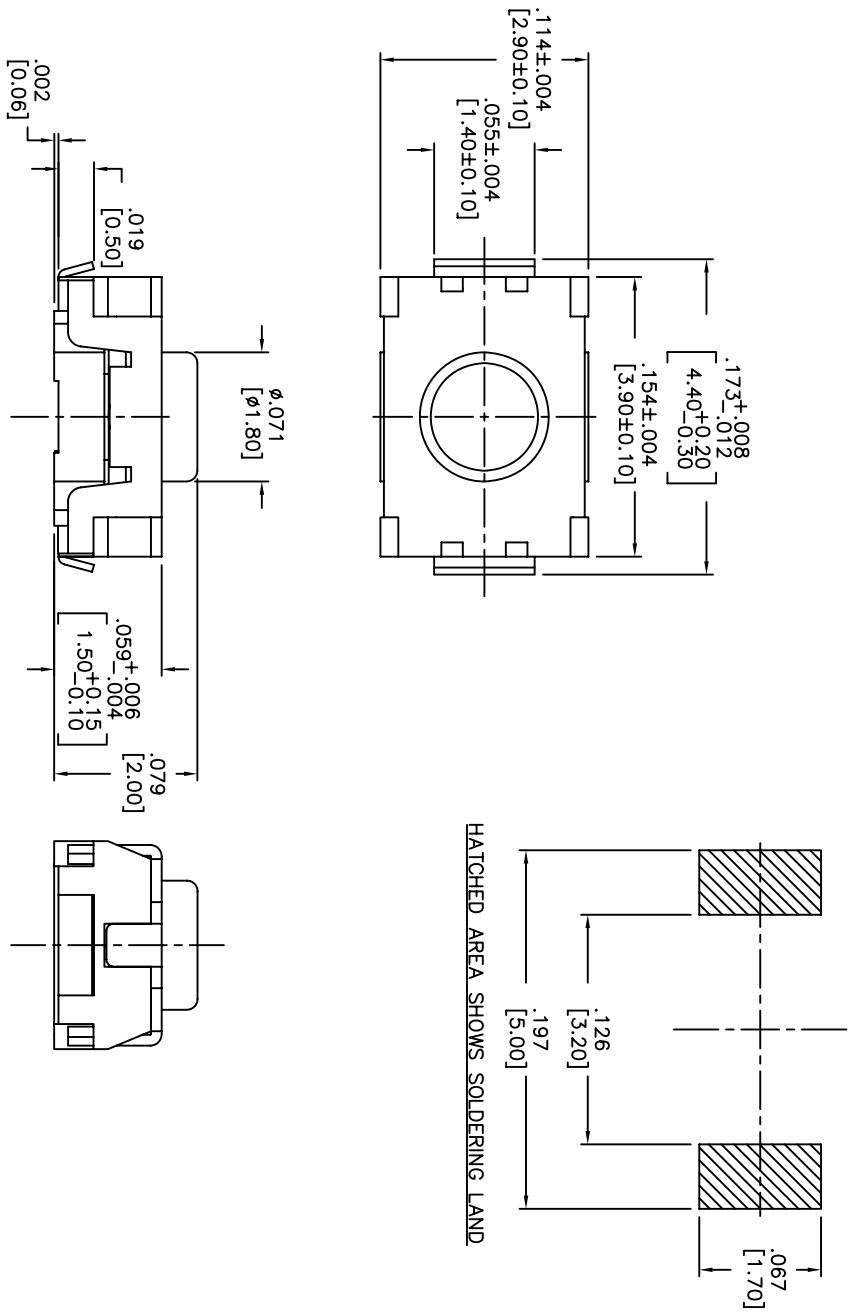
MATERIALS:
 BASE: LCP HIGH-TEMP THERMOPLASTIC UL94V-0
 ACTUATOR: LCP HIGH-TEMP THERMOPLASTIC UL94V-0
 COVER: STAINLESS STEEL
 TERMINALS: SILVER PLATED BRASS
 SHORTING CONTACT: STAINLESS STEEL WITH SILVER CLADDING
 TAPE: TEFLON
 ROHS COMPLIANT

NOTE:
 1. AFTER SOLDERING, RETURN SWITCHES TO NORMAL TEMPERATURE BEFORE WASHING.

D.A. INSECTI DESIGNER'S INITIAL DIMENSION		63 Neck Rd. Haverhill, MA 01830 Telephone: 978-372-3534 Fax: 978-372-3534		PRN. CJD BR:
TOLERANCES (UNLESS AS NOTED) .XX=±.02[0.5] .XXX=±.008[0.20] .XXXX=±.0008[0.02] ANGLE = 40.5°		SHEET 1 OF 1 SIZE B SCALE 10:1	THIRD ANGLE PROJECTION 	PJD
TITLE TACT SWITCH WITH LOCATING PINS		DATE 07/20/05	DRAWING NO. AMPTCFGP1VTR	REV B

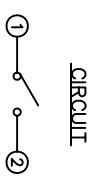
THIS DOCUMENT IS THE PROPERTY OF APDM COMPONENTS AND SHALL NOT BE COPIED, REPRODUCED, DISCLOSED OR USED AS THE BASIS FOR MANUFACTURING OR SALE WITHOUT PERMISSION OF A DULY AUTHORIZED REPRESENTATIVE OF APDM COMPONENTS INC.

P.C.B. LAYOUT



DATE	SYM	REVISION RECORD	DWN.	CK.
1/06	A	ECO# 526	CD	PD
5/08	B	ECO# 778	CD	PD

DESCRIPTION: VERTICAL PUSH MECHANICAL CONTACT SWITCH.
 SPECIFICATIONS:
 OPERATION FORCE: 220 ± 65gf
 OPERATION TEMP.: -25°C TO +70°C.
 STORAGE TEMP.: -30°C TO +80°C.
 ELECTRICAL LIFE: 200,000 CYCLES.
 RATING: 50mA, 12VDC.
 VIBRATION RESISTANCE: PASSES METHOD 201A
 MIL-STD-202F
 SHOCK RESISTANCE: 50G PER METHOD 213B
 MIL-STD-202F
 CONTACT RESISTANCE: 100mΩ MAX.
 INSULATION RESISTANCE: 100MΩ MIN. AT 100VDC.
 DIELECTRIC STRENGTH: 100VAC/1 MINUTE.
 CONTACT ARRANGEMENT: 1 POLE 1 THROW.
 MATERIALS:
 COVER: STAINLESS STEEL
 BASE: LCP HIGH-TEMP. THERMOPLASTIC.
 COLOR, WHITE.
 STEM: LCP HIGH-TEMP. THERMOPLASTIC.
 COLOR, BLACK.
 CONTACT DISK: STAINLESS STEEL WITH SILVER CLADDING
 TERMINAL: BRASS WITH SILVER PLATING
 TAPE & REEL PACKAGING, 2,000 PER REEL
 SOLDERING:
 HAND SOLDERING: 30 WATT IRON AT 320°C FOR 2 SECONDS
 IR REFLOW: 240°C MAX
 ROHS COMPLIANT
 LEAD FREE PROCESS COMPATIBLE

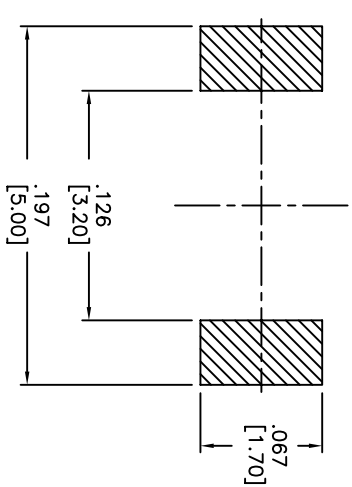
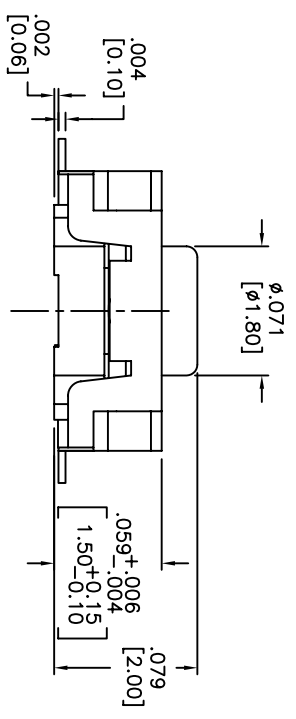
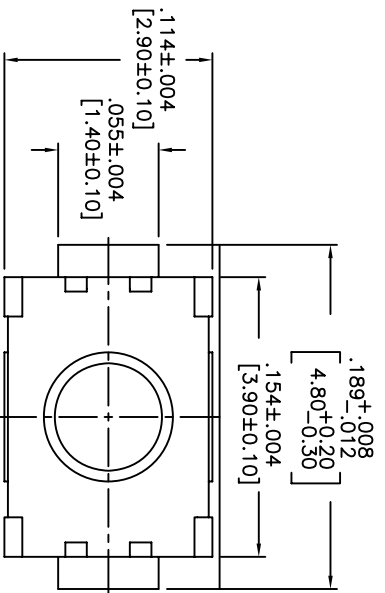


0A. INSPECT: DESIGNATES CRITICAL DIMENSION		63 Neck Rd. 01835 Haverhill, MA Phone: 978-372-5554 Fax: 978-372-5554		DRN. CJD BR.
TOLERANCES (except as noted) .XX = ±.02 [0.5] .XXX = ±.008 [0.20] .XXXX = ±.0008 [0.02] ANGLE = 30.5°		SHEET 1 OF 1 SIZE B SCALE 15:1	THIRD ANGLE PROJECTION 	PJD
TITLE TACT SWITCH		DRAWING NO. AMPTLP2VTR		
DO NOT SCALE FROM DIMENSIONS		DATE 01/23/06	REV B	

1 2 3 4 5 6 7 8

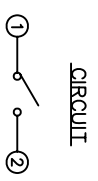
THIS DOCUMENT IS THE PROPERTY OF APDM COMPONENTS AND SHALL NOT BE COPIED, REPRODUCED, DISCLOSED OR SALE WITHOUT PERMISSION OF A DULY AUTHORIZED REPRESENTATIVE OF APDM COMPONENTS INC.

P.C.B. LAYOUT



HATCHED AREA SHOWS SOLDERING LAND

DESCRIPTION: VERTICAL PUSH MECHANICAL CONTACT SWITCH.
 SPECIFICATIONS:
 OPERATION FORCE: 160± 50gf
 OPERATION TEMP.: -25°C TO +70°C.
 STORAGE TEMP.: -30°C TO +80°C.
 ELECTRICAL LIFE: 200,000 CYCLES.
 RATING: 50mA, 12VDC.
 VIBRATION RESISTANCE: PASSES METHOD 201A
 MIL-STD-202F
 SHOCK RESISTANCE: 50G PER METHOD 213B
 MIL-STD-202F
 CONTACT RESISTANCE: 100mΩ MAX.
 INSULATION RESISTANCE: 100MΩ MIN. AT 100VDC.
 DIELECTRIC STRENGTH: 100VAC/1 MINUTE.
 CONTACT ARRANGEMENT: 1 POLE 1 THROW.
 MATERIALS:
 COVER: STAINLESS STEEL
 BASE: LCP HIGH-TEMP. THERMOPLASTIC.
 COLOR, WHITE.
 STEM: LCP HIGH-TEMP. THERMOPLASTIC.
 COLOR, BLACK.
 CONTACT DISK: STAINLESS STEEL WITH SILVER CLADDING
 TERMINAL: BRASS WITH SILVER PLATING
 TAPE: TEFLON.
 TAPE & REEL PACKAGING, 2,000 PER REEL
 SOLDERING:
 HAND SOLDERING: 30 WATT IRON AT 320°C FOR 2 SECONDS
 IR REFLOW: 260°C MAX
 RoHS COMPLIANT
 LEAD FREE PROCESS COMPATIBLE



DATE	SYM	REVISION RECORD	DWN.	CK.
5/08	B	ECO# 778	CD	PD

Q.A. INSPECT:		DESIGNATES CRITICAL DIMENSION		TOLERANCES (UNLESS OTHERWISE SPECIFIED)		ANGLE = 40.5°	
APDM		63 Neck Rd. 01835		1 OF 1		SCALE 15:1	
TITLE		TACT SWITCH		SHEET		DRAWING NO. AMPTFP2VTR	
DATE		01/23/06		REV		B	

1 2 3 4 5 6 7 8



Компания «ЭлектроПласт» предлагает заключение долгосрочных отношений при поставках импортных электронных компонентов на взаимовыгодных условиях!

Наши преимущества:

- Оперативные поставки широкого спектра электронных компонентов отечественного и импортного производства напрямую от производителей и с крупнейших мировых складов;
- Поставка более 17-ти миллионов наименований электронных компонентов;
- Поставка сложных, дефицитных, либо снятых с производства позиций;
- Оперативные сроки поставки под заказ (от 5 рабочих дней);
- Экспресс доставка в любую точку России;
- Техническая поддержка проекта, помощь в подборе аналогов, поставка прототипов;
- Система менеджмента качества сертифицирована по Международному стандарту ISO 9001;
- Лицензия ФСБ на осуществление работ с использованием сведений, составляющих государственную тайну;
- Поставка специализированных компонентов (Xilinx, Altera, Analog Devices, Intersil, Interpoint, Microsemi, Aeroflex, Peregrine, Syfer, Eurofarad, Texas Instrument, Miteq, Cobham, E2V, MA-COM, Hittite, Mini-Circuits, General Dynamics и др.);

Помимо этого, одним из направлений компании «ЭлектроПласт» является направление «Источники питания». Мы предлагаем Вам помощь Конструкторского отдела:

- Подбор оптимального решения, техническое обоснование при выборе компонента;
- Подбор аналогов;
- Консультации по применению компонента;
- Поставка образцов и прототипов;
- Техническая поддержка проекта;
- Защита от снятия компонента с производства.



Как с нами связаться

Телефон: 8 (812) 309 58 32 (многоканальный)

Факс: 8 (812) 320-02-42

Электронная почта: org@eplast1.ru

Адрес: 198099, г. Санкт-Петербург, ул. Калинина, дом 2, корпус 4, литера А.