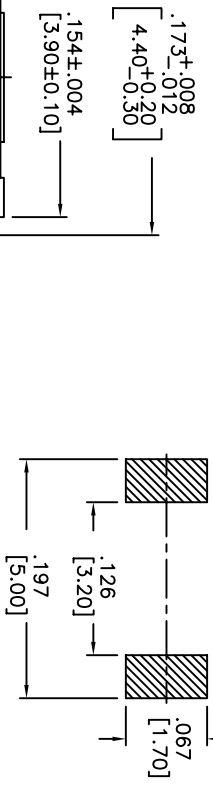
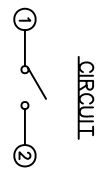
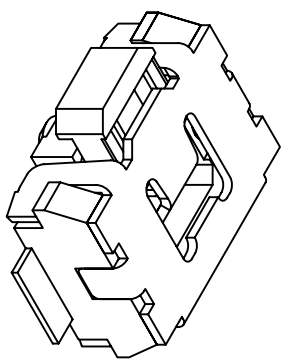
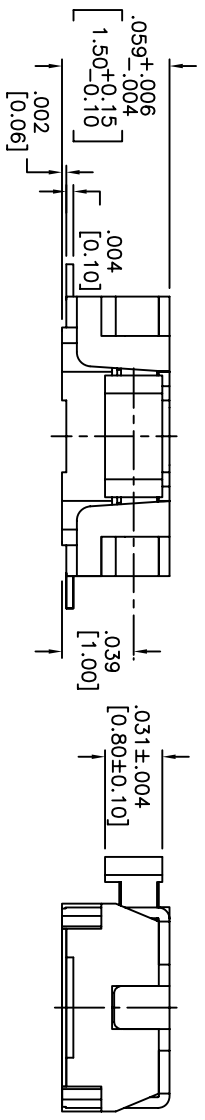


THIS DOCUMENT IS THE PROPERTY OF APDM COMPONENTS AND SHALL NOT BE COPIED, REPRODUCED, DISCLOSED OR USED AS THE BASIS FOR MANUFACTURING OR SALE WITHOUT PERMISSION OF A DULY AUTHORIZED REPRESENTATIVE OF APDM COMPONENTS INC.



HATCHED AREA SHOWS SOLDERING LAND.
P.C.B. LAYOUT
UNLESS OTHERWISE SPECIFIED
ALL P.C. TOLERANCES ARE ±.002 [0.05]



DATE	SYM	REVISION RECORD	DWNL	CK
5/08	A	ECO# 778	CD	PD

DESCRIPTION: SIDE PUSH MECHANICAL CONTACT SWITCH.

SPECIFICATIONS:
OPERATION FORCE: 220± 65gf

STROKE: 0.2±0.08mm
OPERATION TEMP.: -25°C TO +70°C.
STORAGE TEMP.: -30°C TO +80°C.
ELECTRICAL LIFE: 100,000 CYCLES.
RATING: 50mA, 12VDC.

CONTACT RESISTANCE: 100mΩ MAX.
INSULATION RESISTANCE: 100MΩ MIN. AT 100VDC.
DIELECTRIC STRENGTH: 100VAC/1 MINUTE.
CONTACT ARRANGEMENT: 1 POLE 1 THROW.

VIBRATION TEST: PASSED METHOD 201A
MIL-STD-202F.

SHOCK TEST: 50G PER METHOD 213B CONDITION A OF MIL-STD-202F

MATERIALS:
COVER: STAINLESS STEEL

BASE: LCP HIGH-TEMP. THERMOPLASTIC.
COLOR, WHITE.

STEM: LCP HIGH-TEMP. THERMOPLASTIC.
COLOR, BLACK.

CONTACT DISK: STAINLESS STEEL
WITH SILVER CLADDING

TERMINAL: BRASS WITH SILVER PLATING
PACKAGING: TAPE AND REEL
(3,500 PIECES PER REEL)

ROHS COMPLIANT
LEAD FREE SOLDERING COMPATIBLE

HAND SOLDERING: 320°C MAX WITH 30 WATT IRON FOR 2 SECONDS
IR REFLOW: 260°C MAX

CUSTOMER PART NO.: 263262

QA INSPECT: []

DESIGNER'S INITIAL: []

TOLERANCES (UNLESS OTHERWISE SPECIFIED)
.XXX±.XXX [0.05]
.XXX±.XXX [0.20]
.XXX±.XXX [0.002]

ANGLE = 40.5°

DO NOT SCALE

DATE: 7/31/06 DRAWING NO. AMPPTFVTR

INCH	SHEET	SIZE	SCALE	THIRD ANGLE PROJECTION
1 OF 1	B	15:1		

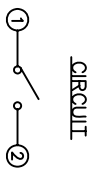
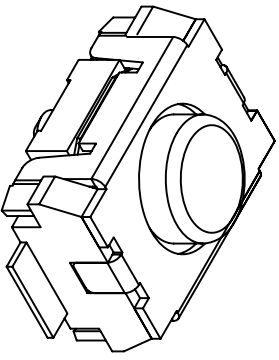
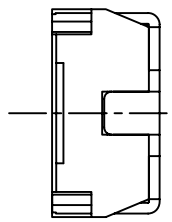
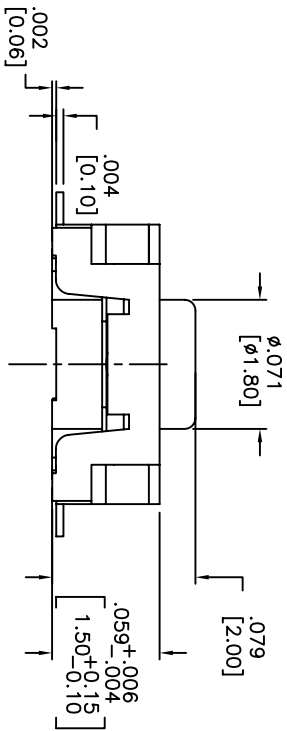
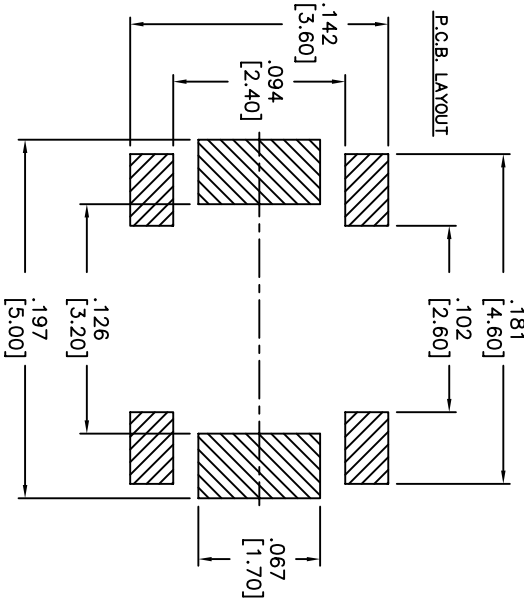
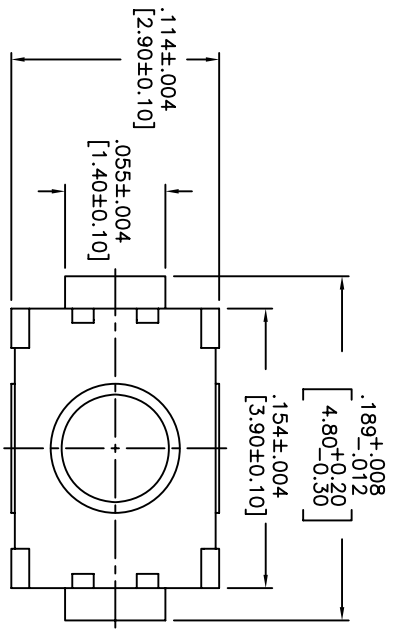
APDM
Advanced Precision Device Manufacturing, Inc.
1500 S. WILSON AVE. #200
MARIETTA, GA 30067
770-372-5554

PN: CJD
BR: []
OR: []
PJD

TITLE: TACT SWITCH

REV: A

THIS DOCUMENT IS THE PROPERTY OF APEN COMPONENTS AND SHALL NOT BE COPIED, REPRODUCED, DISCLOSED OR USED AS THE BASIS FOR MANUFACTURING OR SALE WITHOUT PERMISSION OF A DULY AUTHORIZED REPRESENTATIVE OF APEN COMPONENTS INC.



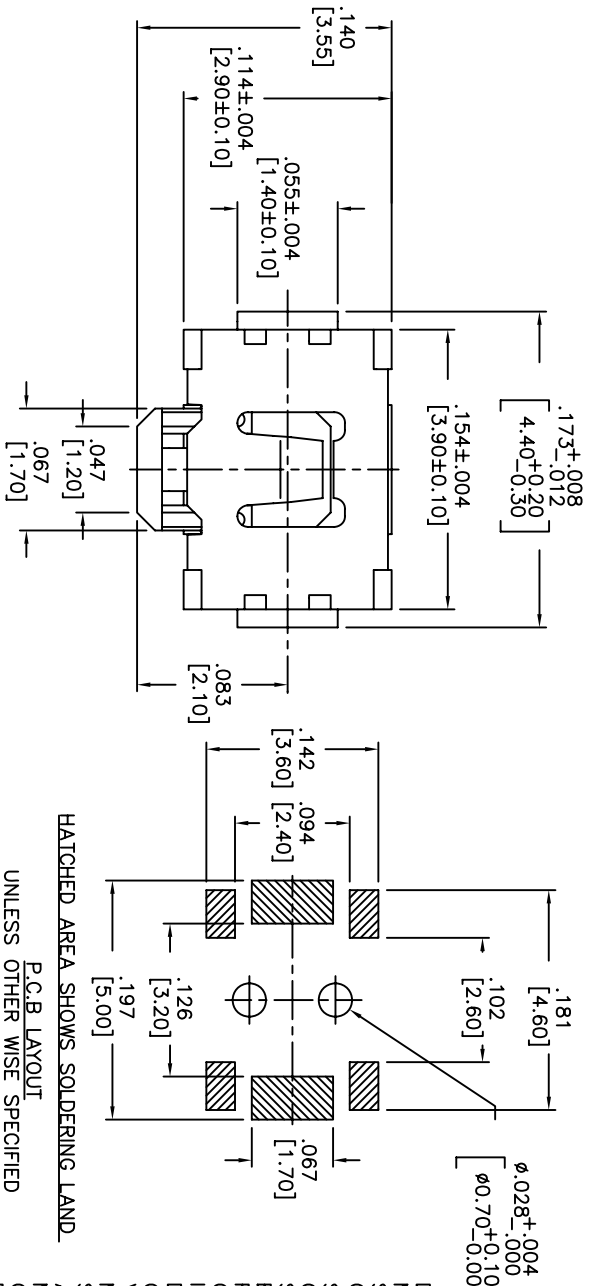
DATE	SYM	REVISION RECORD	DWN.	CK.
5/08	B	ECO# 778	CD	PD

DESCRIPTION: VERTICAL PUSH MECHANICAL CONTACT SWITCH.
 SPECIFICATIONS:
 OPERATION FORCE: 160±50gf
 OPERATION TEMP.: -25°C TO +70°C.
 STORAGE TEMP.: -30°C TO +80°C.
 ELECTRICAL LIFE: 100,000 CYCLES.
 RATING: 50ma, 12VDC.
 VIBRATION RESISTANCE: PASSES METHOD 201A MIL-STD-202F
 SHOCK RESISTANCE: 50G PER METHOD 213B MIL-STD-202F
 CONTACT RESISTANCE: 100mΩ MAX.
 INSULATION RESISTANCE: 100MΩ MIN. AT 100VDC.
 DIELECTRIC STRENGTH: 100VAC/1 MINUTE.
 CONTACT ARRANGEMENT: 1 POLE 1 THROW.
 MATERIALS:
 COVER: STAINLESS STEEL
 BASE: LCP HIGH-TEMP. THERMOPLASTIC.
 COLOR, WHITE.
 STEM: LCP HIGH-TEMP. THERMOPLASTIC.
 COLOR, BLACK
 CONTACT DISK: STAINLESS STEEL WITH SILVER CLADDING
 TERMINAL: BRASS WITH SILVER PLATING
 TAPE: TEFLON.
 TAPE & REEL PACKAGING, 2,000 PER REEL
 SOLDERING:
 HAND SOLDERING: 30 WATT IRON AT 320°C FOR 2 SECONDS
 IR REFLOW: 240°C MAX
 ROHS COMPLIANT

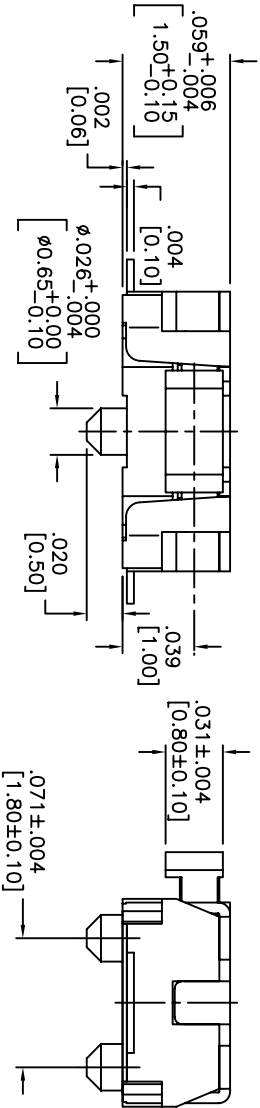
0A. INSPECT: DESIGNATES CRITICAL DIMENSION		APEN 63 Neck Rd. Haverhill, MA 01830 Phone: 978-372-5554 Fax: 978-372-5554		DRN. CJD BR:
TOLERANCES (unless as noted) .XX± = ±.02 [0.5] .XXX± = ±.008 [0.20] .XXXX± = ±.0008 [0.02] ANGLE = 30.5°		SHEET 1 OF 1 SIZE B SCALE 15:1	THIRD ANGLE PROJECTION 	PJD
TITLE VERTICAL PUSH TACT SWITCH		DATE 2/4/08	DRAWING NO. AMPPTFGP2VTR	REV B

THIS DOCUMENT IS THE PROPERTY OF APEN COMPONENTS AND SHALL NOT BE COPIED, REPRODUCED, DISCLOSED OR USED AS THE BASIS FOR MANUFACTURING OR SALE WITHOUT PERMISSION OF A DULY AUTHORIZED REPRESENTATIVE OF APEN COMPONENTS INC.

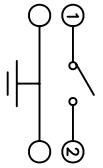
DATE	SYM	REVISION RECORD	DWN.	CK.
01/06	A	ECO # 526	CD	PD
5/08	B	ECO# 778	CD	PD



HATCHED AREA SHOWS SOLDERING LAND
P.C.B. LAYOUT
UNLESS OTHERWISE SPECIFIED
ALL P.C. TOLERANCES ARE ±.002 [0.05]



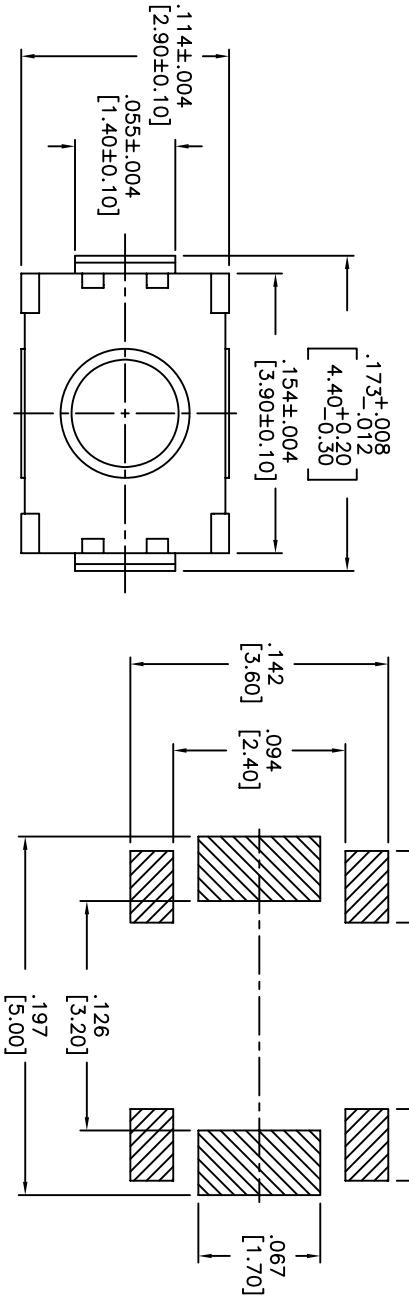
CIRCUIT



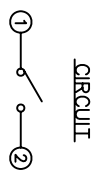
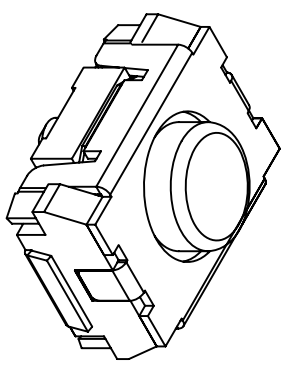
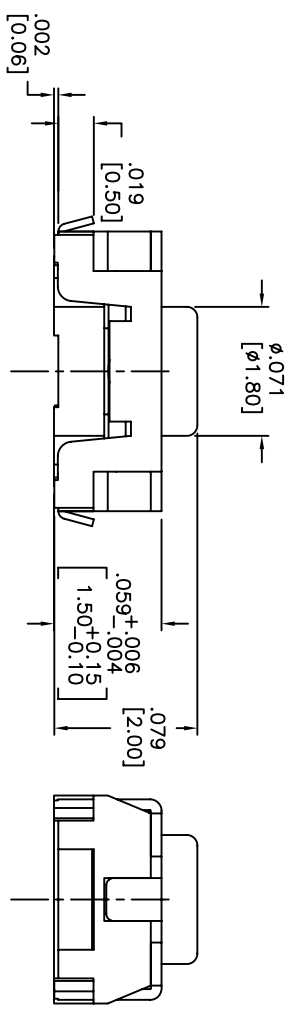
DESCRIPTION: SIDE PUSH
MECHANICAL CONTACT SWITCH.
SPECIFICATIONS:
OPERATION FORCE: 220± 65gf
STROKE: 0.2±0.09mm
OPERATION TEMP.: -25°C TO +70°C.
STORAGE TEMP.: -30° TO +80°.
ELECTRICAL LIFE: 100,000 CYCLES.
RATING: 50mA, 12VDC.
CONTACT RESISTANCE: 100mΩ MAX.
INSULATION RESISTANCE: 100MΩ MIN. AT 100VDC.
DIELECTRIC STRENGTH: 100VAC/1 MINUTE.
CONTACT ARRANGEMENT: 1 POLE 1 THROW.
VIBRATION TEST: PASSED METHOD 201A
MIL-STD-202F.
SHOCK TEST: 50G PER METHOD 213B CONDITION
A OF MIL-STD-202F
MATERIALS:
COVER: STAINLESS STEEL
BASE: LCP HIGH-TEMP. THERMOPLASTIC.
COLOR: WHITE.
STEM: LCP HIGH-TEMP. THERMOPLASTIC.
COLOR: BLACK.
CONTACT DISK: STAINLESS STEEL
WITH SILVER CLADDING
TERMINAL: BRASS WITH SILVER PLATING
PACKAGING: TAPE AND REEL
(3,500 PEICES PER REEL.)
ROHS COMPLIANT
HAND SOLDERING: 320°C MAX WITH 30 WATT IRON
FOR 2 SECONDS
IR REFLOW: 240°C MAX

DESIGNER'S INITIALS	INSPECTOR'S INITIALS	DATE	SCALE	DRAWING NO.	REV.
		06/30/05	15:1	AMPPTCFGVTR	B
TOLERANCES (UNLESS OTHERWISE SPECIFIED) (X.XX=±0.02)(0.15) (.XXX=±0.004)(0.20) (.XXXX=±0.0008)(0.002) ANGLE = 30.5°					
<p>APEN 63 Neck Rd. 01855 Thorpville, MA 372-2554 FAX: 372-2554 APEN COMPONENTS INC.</p>					
TITLE	SHEET	SIZE	SCALE	THIRD ANGLE PROJECTION	
TACT SWITCH	1 OF 1	B	15:1	CD	PD

THIS DOCUMENT IS THE PROPERTY OF APDM COMPONENTS AND SHALL NOT BE COPIED, REPRODUCED, DISCLOSED OR SALE WITHOUT PERMISSION OF A DULY AUTHORIZED REPRESENTATIVE OF APDM COMPONENTS INC.



HATCHED AREA SHOWS SOLDERING LAND



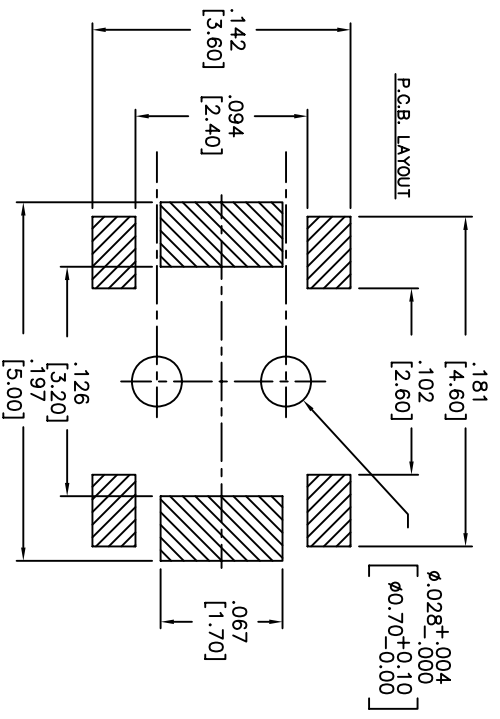
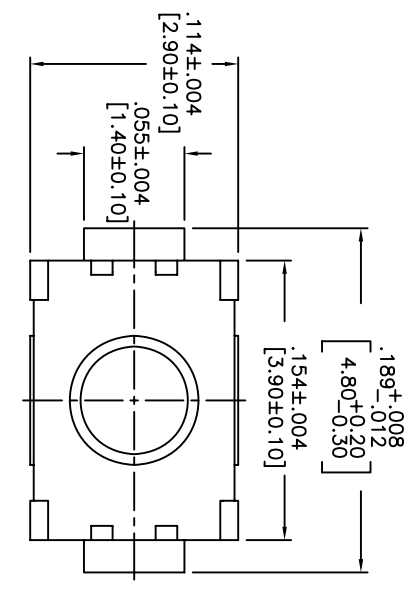
DATE	SYM	REVISION RECORD	DWNL	CK
5/08	B	ECO# 778	CD	PD

DESCRIPTION: VERTICAL PUSH MECHANICAL CONTACT SWITCH.
 SPECIFICATIONS:
 OPERATION FORCE: 160± 50gf
 OPERATION TEMP.: -25°C TO +70°C.
 STORAGE TEMP.: -30°C TO +80°C.
 ELECTRICAL LIFE: 100,000 CYCLES.
 RATING: 50mA, 12VDC.
 VIBRATION RESISTANCE: PASSES METHOD 201A MIL-STD-202F
 SHOCK RESISTANCE: 50G PER METHOD 213B MIL-STD-202F
 CONTACT RESISTANCE: 100mΩ MAX.
 INSULATION RESISTANCE: 100MΩ MIN. AT 100VDC.
 DIELECTRIC STRENGTH: 100VAC/1 MINUTE.
 CONTACT ARRANGEMENT: 1 POLE 1 THROW.
 MATERIALS:
 COVER: STAINLESS STEEL
 BASE: LCP HIGH-TEMP. THERMOPLASTIC.
 COLOR, WHITE.
 STEM: LCP HIGH-TEMP. THERMOPLASTIC.
 COLOR, BLACK.
 CONTACT DISK: STAINLESS STEEL
 WITH SILVER CLADDING
 TERMINAL: BRASS WITH SILVER PLATING
 TAPE: TEFLON.
 TAPE & REEL PACKAGING, 2,000 PER REEL
 SOLDERING:
 HAND SOLDERING: 30 WATT IRON AT 320°C FOR 2 SECONDS
 IR REFLOW: 240°C MAX
 ROHS COMPLIANT

Q.A. INSPECT: 		DESIGNER'S CRITICAL DIMENSION TOLERANCES (UNLESS OTHERWISE SPECIFIED) .XX = ±0.005 .XXX = ±0.008 .XXXX = ±0.008 ANGLE = 40.5°		PERN.: CJD BR: OR: PJD
DATE: 2/4/08 DO NOT SCALE DRAWING	TITLE: VERTICAL PUSH TACT SWITCH	SHEET: 1 OF 1 SIZE: B SCALE: 15:1	THIRD ANGLE PROJECTION 	
DRAWING NO.: AMPPTLGP2VTR	REV: B			

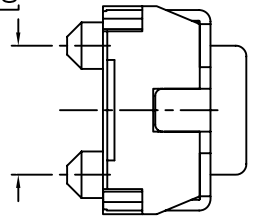
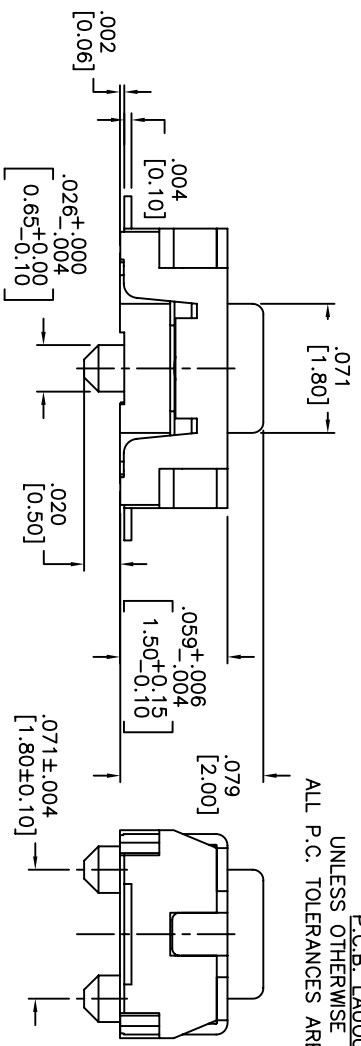
1 2 3 4 5 6 7 8

THIS DOCUMENT IS THE PROPERTY OF APDM COMPONENTS AND SHALL NOT BE COPIED, REPRODUCED, DISCLOSED OR USED AS THE BASIS FOR MANUFACTURING OR SALE WITHOUT PERMISSION OF A DULY AUTHORIZED REPRESENTATIVE OF APDM COMPONENTS INC.

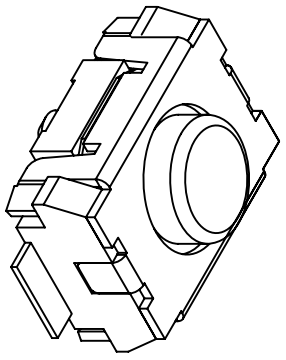


HATCHED AREA SHOWS SOLDERING LAND

P.C.B. LAYOUT
UNLESS OTHERWISE SPECIFIED
ALL P.C. TOLERANCES ARE ±.002 [0.50]



CIRCUIT



DATE	SYM	REVISION RECORD	DWN.	CK.
5/08	B	ECO# 778	CD	PD

DESCRIPTION: VERTICAL PUSH MECHANICAL CONTACT SWITCH.

SPECIFICATIONS:

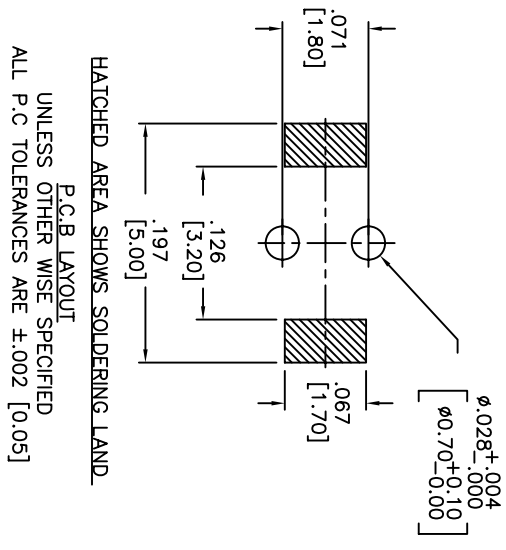
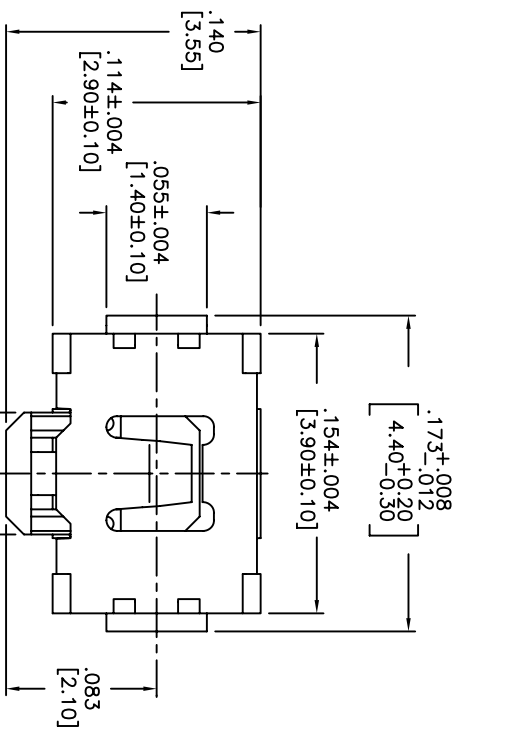
OPERATION FORCE: 160± 50gf
 OPERATION TEMP.: -25°C TO +70°C.
 STORAGE TEMP.: -30°C TO +80°C.
 ELECTRICAL LIFE: 200,000 CYCLES.
 RATING: 50ma, 12VDC.
 VIBRATION RESISTANCE: PASSES METHOD 201A
 MIL-STD-202F
 SHOCK RESISTANCE: 50G PER METHOD 213B
 MIL-STD-202F
 CONTACT RESISTANCE: 100mΩ MAX.
 INSULATION RESISTANCE: 100MΩ MIN. AT 100VDC.
 DIELECTRIC STRENGTH: 100VAC/1 MINUTE.
 CONTACT ARRANGEMENT: 1 POLE 1 THROW.
 TRAVEL: .005 ±.002 [0.13 ±0.05]

MATERIALS:

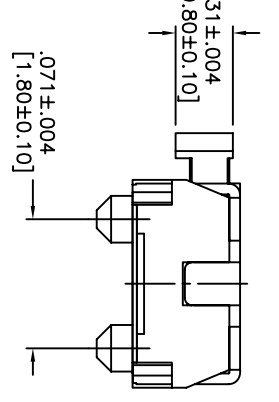
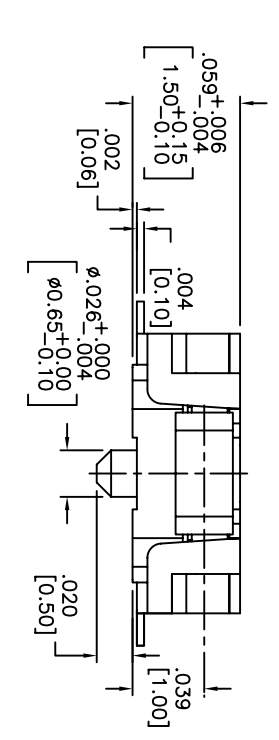
COVER: STAINLESS STEEL
 BASE: LCP HIGH-TEMP. THERMOPLASTIC.
 COLOR, WHITE.
 STEM: LCP HIGH-TEMP. THERMOPLASTIC.
 COLOR, BLACK.
 CONTACT DISK: STAINLESS STEEL WITH SILVER CLADDING
 TERMINAL: BRASS WITH SILVER PLATING
 TAPE: TEFLON.
 TAPE & REEL PACKAGING: 2,000 PER REEL
 SOLDERING:
 HAND SOLDERING: 30 WATT IRON AT 320°C FOR 2 SECONDS
 IR REFLOW: 240°C MAX
 ROHS COMPLIANT

Q.A. INSPECT:	DESIGNER'S INITIAL:	APDM	63 Neck Rd. Haverhill, MA 01830 Phone: 978-372-5554 Fax: 978-372-5554	DRN. CJD	
TOLERANCES (UNLESS OTHERWISE SPECIFIED)	INCH	SHEET	SIZE	SCALE	THIRD ANGLE PROJECTION
.XX±.XX[0.5]	1 OF 1	B	15:1		
.XXX±.XX[0.20]	TITLE		TACT SWITCH		
.XXXX±.XX[0.02]	DATE		6/30/05		
ANGLE = 30.5°	DRAWING NO.		AMPTCFGP2VTR		
DO NOT SCALE	REV		B		

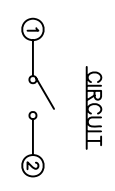
THIS DOCUMENT IS THE PROPERTY OF APEM COMPONENTS AND SHALL NOT BE COPIED, REPRODUCED, DISCLOSED OR SALE WITHOUT PERMISSION OF A DULY AUTHORIZED REPRESENTATIVE OF APEM COMPONENTS INC.



HATCHED AREA SHOWS SOLDERING LAND
P.C.B. LAYOUT
UNLESS OTHER WISE SPECIFIED
ALL P.C TOLERANCES ARE ±.002 [0.05]



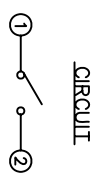
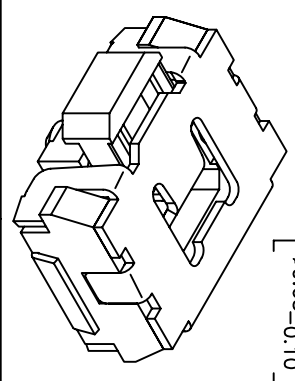
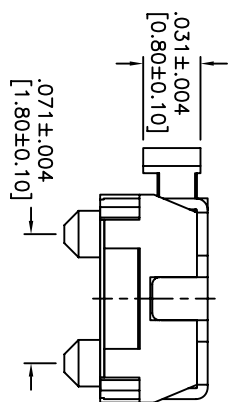
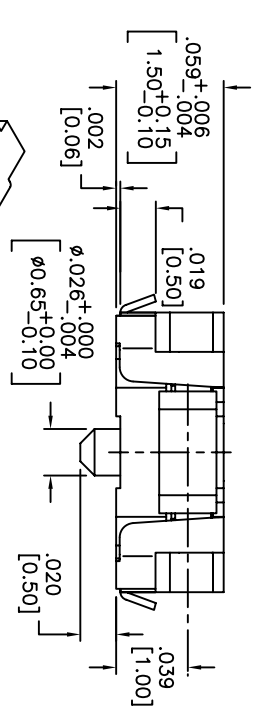
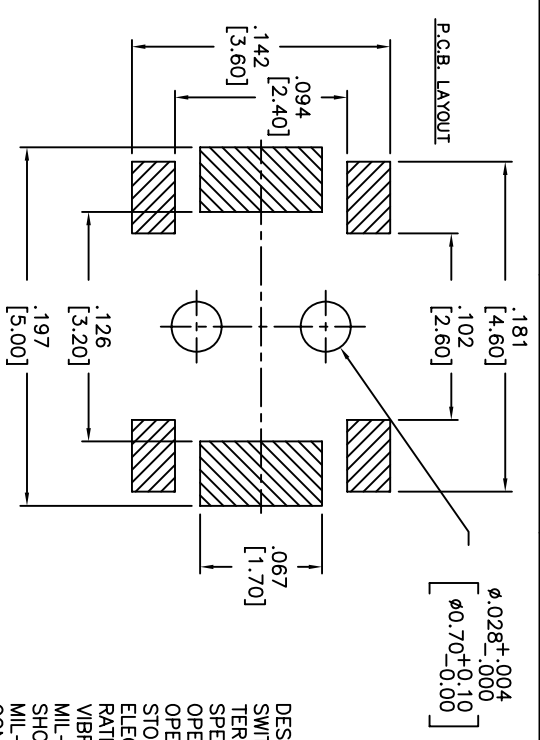
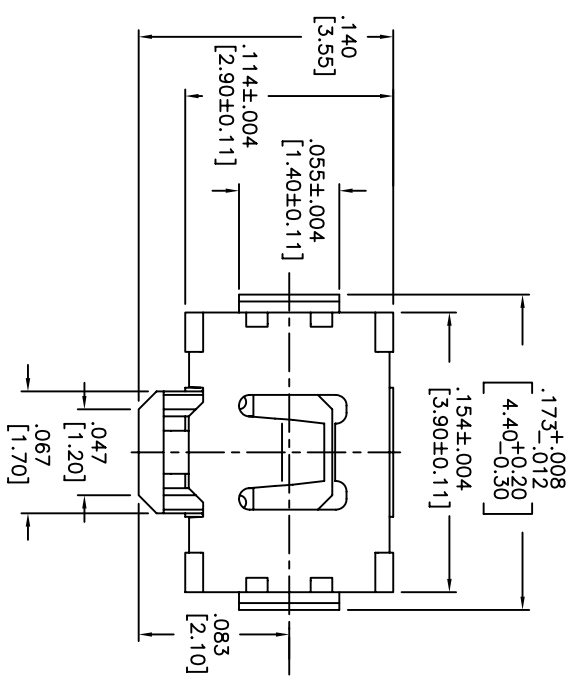
DESCRIPTION: SIDE PUSH MECHANICAL CONTACT SWITCH.
SPECIFICATIONS:
OPERATION FORCE: 220± 65gf
STROKE: 0.2±0.10mm
OPERATION TEMP.: -25°C TO +70°C.
STORAGE TEMP.: -30°C TO +80°C.
ELECTRICAL LIFE: 100,000 CYCLES.
RATING: 50mA, 12VDC.
CONTACT RESISTANCE: 100mΩ MAX.
INSULATION RESISTANCE: 100MΩ MIN. AT 100VDC.
DIELECTRIC STRENGTH: 100VAC/1 MINUTE.
CONTACT ARRANGEMENT: 1 POLE 1 THROW.
VIBRATION TEST: PASSED METHOD 201A
MIL-STD-202F.
SHOCK TEST: 50G PER METHOD 213B CONDITION A OF MIL-STD-202F
MATERIALS:
COVER: STAINLESS STEEL
BASE: LCP HIGH-TEMP. THERMOPLASTIC.
COLOR, WHITE.
STEM: LCP HIGH-TEMP. THERMOPLASTIC.
COLOR, BLACK.
CONTACT DISK: STAINLESS STEEL
WITH SILVER CLADDING
TERMINAL: BRASS WITH SILVER PLATING
PACKAGING: TAPE AND REEL
(3,500 PEICES PER REEL)
ROHS COMPLIANT
LEAD FREE SOLDERING COMPATIBLE
HAND SOLDERING: 320°C MAX WITH 30 WATT IRON FOR 2 SECONDS
IR REFLOW: 260°C MAX



DATE	SYM	REVISION RECORD	DWN.	CK.
5/08	B	ECO# 778	CD	PD

Q.A. INSPECT 		DESIGNER'S INITIAL DIMENSION		DRN. CJD BR.	
TOLERANCES (UNLESS AS NOTED) .XX±.XX[0.5] .XXX±.XXX[0.20] .XXXX±.XXXX[0.02] ANGLE = 30.5°		APEM APEM COMPONENTS, INC. 63 Neck Rd. Hawthorne, NJ 07835 Phone: 973-772-5554 Fax: 973-772-5554		OR. PJD THIRD ANGLE PROJECTION	
TITLE TACT SWITCH		SHEET 1 OF 1 SIZE B SCALE 15:1		DRAWING NO. AMPTCFVTR	
DATE 5/2/06		DO NOT SCALE		REV B	

THIS DOCUMENT IS THE PROPERTY OF APDM COMPONENTS AND SHALL NOT BE COPIED, REPRODUCED, DISCLOSED OR USED AS THE BASIS FOR MANUFACTURING OR SALE WITHOUT PERMISSION OF A DULY AUTHORIZED REPRESENTATIVE OF APDM COMPONENTS INC.



DATE	SYM	REVISION RECORD	DMN.	CK.
1/06	B	ECO# 526	CD	PD
5/08	C	ECO# 778	CD	PD

DESCRIPTION: SIDE PUSH MECHANICAL CONTACT SWITCH, WITH BENDING AND GROUNDING TERMINALS.

SPECIFICATIONS:

- OPERATION FORCE: 220± 65gf
- OPERATION TEMP.: -25°C TO +70°C.
- STORAGE TEMP.: -30°C TO +80°C.
- ELECTRICAL LIFE: 100,000 CYCLES.
- RATING: 50mA, 12VDC.
- VIBRATION RESISTANCE: PASSES METHOD 201A MIL-STD-202F
- SHOCK RESISTANCE: 50G PER METHOD 213B MIL-STD-202F
- CONTACT RESISTANCE: 100MΩ MAX.
- INSULATION RESISTANCE: 100MΩ MIN. AT 100VDC.
- DIELECTRIC STRENGTH: 100VAC/1 MINUTE.
- CONTACT ARRANGEMENT: 1 POLE 1 THROW.
- STROKE: .008 ±.002 [0.2 ±0.05]

MATERIALS:

- COVER: STAINLESS STEEL
- BASE: LCP HIGH-TEMP. THERMOPLASTIC. COLOR: WHITE.
- STEM: LCP HIGH-TEMP. THERMOPLASTIC. COLOR: BLACK.
- CONTACT DISK: STAINLESS STEEL WITH SILVER CLADDING
- TERMINAL: BRASS WITH SILVER PLATING
- TAPE: TEFLON.
- TAPE & REEL PACKAGING, 3500 PER REEL

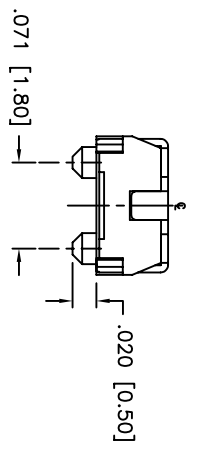
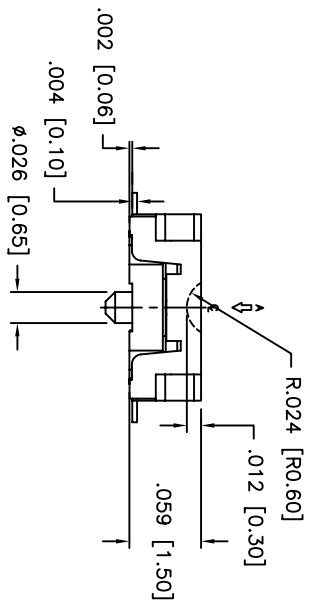
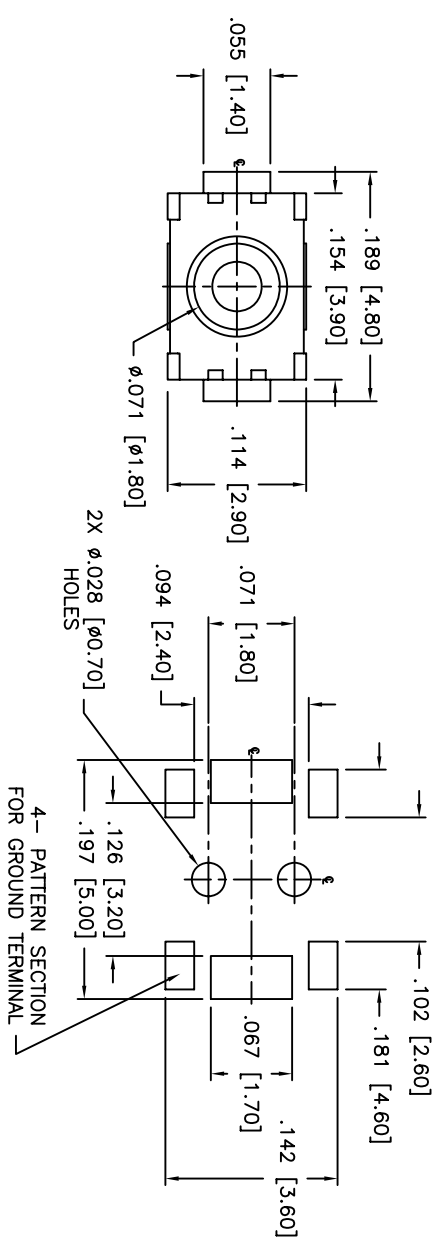
HAND SOLDERING: 30 WATT IRON AT 320°C FOR 2 SECONDS

IR REFLOW: 240°C MAX

ROHS COMPLIANT

Q.A. INSPECT		DESIGNER'S INITIAL		TOLERANCES (UNLESS OTHERWISE SPECIFIED)	
APDM		APDM		.XX±=.XX[0.5]	
				.XXX±=.XXX[0.20]	
				.XXXX±.XXXX[0.02]	
				ANGLE = 10.5°	
DATE	DRAWING NO.	REV	BY	CHK.	PJD
06/30/05	AMPTCLGVTR	C			

THIS DOCUMENT IS THE PROPERTY OF APDM COMPONENTS AND SHALL NOT BE COPIED, REPRODUCED, DISCLOSED OR USED AS THE BASIS FOR MANUFACTURING OR SALE WITHOUT PERMISSION OF A DULY AUTHORIZED REPRESENTATIVE OF APDM COMPONENTS INC.



SCHEMATIC

DATE	SYM	REVISION RECORD	DWN.	CK.
1/06	A	ECO # 526	CD	PD
5/08	B	ECO# 778	CD	PD

DESCRIPTION: SPST, NORMALLY OPEN, MOMENTARY, SURFACE MOUNT TACT SWITCH WITH LOCATING PINS

SPECIFICATIONS:
 CONTACT RATING: 50mA @ 12VDC
 INITIAL CONTACT RESISTANCE: 100MOHMS MAX.
 INSULATION RESISTANCE: 100MOHMS MIN. @ 500VDC
 DIELECTRIC STRENGTH: 100VAC FOR 1 MINUTE
 ELECTRICAL LIFE: 200,000 CYCLES MIN.
 OPERATING TEMPERATURE RANGE: -25°C to +70°C
 STOP STRENGTH: MAX 3kgf VERTICAL STATIC LOAD
 CONT. FOR 15 SEC.

ACTUATION FORCE: 160± 50gf
 STORAGE TEMPERATURE RANGE: -30°C TO +80°C
 SHOCK RESISTANCE: 50G PER METHOD 213B, MIL-STD-202F
 VIBRATION RESISTANCE: PASSES METHOD 201A, MIL-STD-202F

SOLDERING:
 IR REFLOW: 240°C MAX.
 HAND SOLDERING: 350°C MAX. FOR 3 SECONDS MAX.
 (30 WATT IRON MAX.)

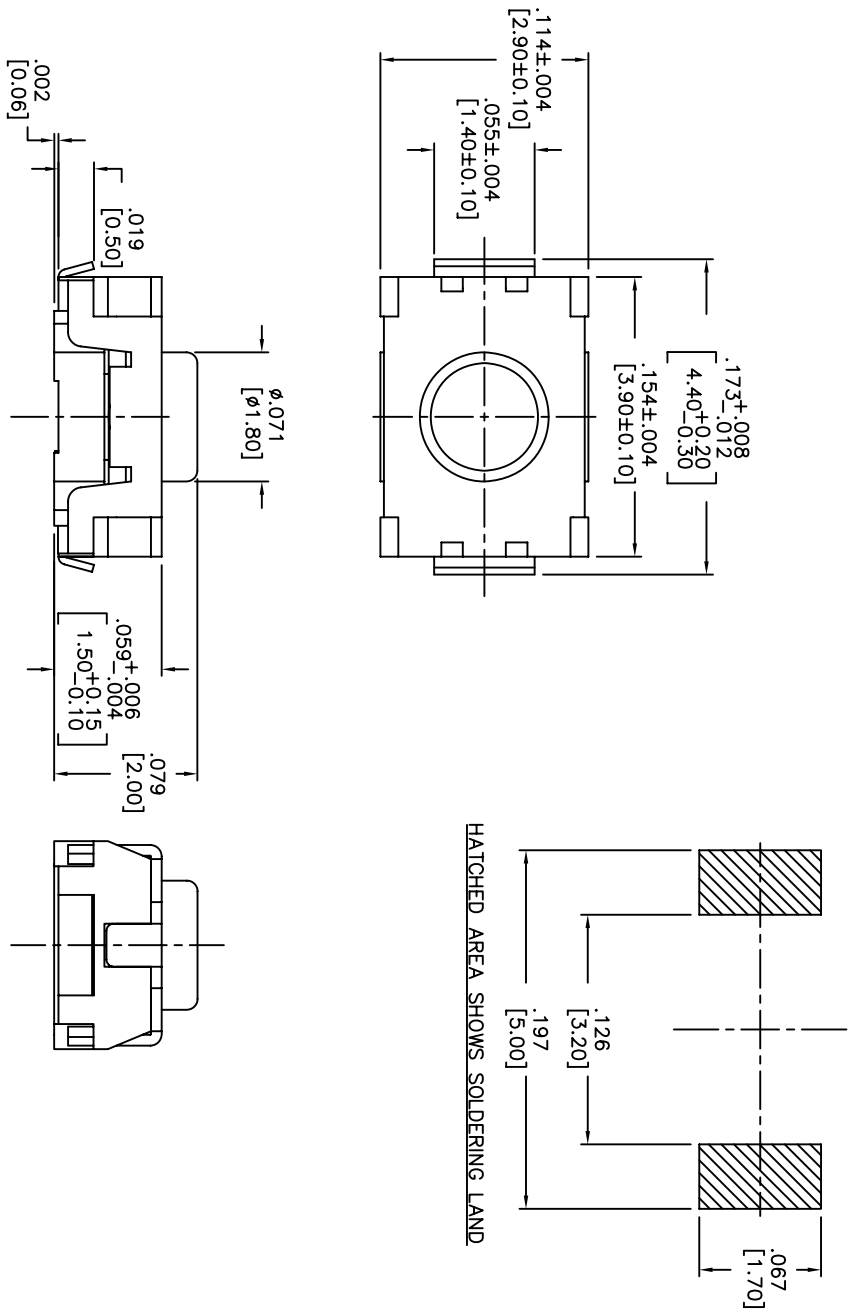
MATERIALS:
 BASE: LCP HIGH-TEMP THERMOPLASTIC UL94V-0
 ACTUATOR: LCP HIGH-TEMP THERMOPLASTIC UL94V-0
 COVER: STAINLESS STEEL
 TERMINALS: SILVER PLATED BRASS
 SHORTING CONTACT: STAINLESS STEEL WITH SILVER CLADDING
 TAPE: TEFLON
 ROHS COMPLIANT

NOTE:
 1. AFTER SOLDERING, RETURN SWITCHES TO NORMAL TEMPERATURE BEFORE WASHING.

DESIGNER'S INITIAL	APDM	63 Neck Rd. Haverhill, MA 01830 Tel: 978-372-3554 Fax: 978-372-3554	DRN. CJD
TOLERANCES (UNLESS AS NOTED) .XX=±.02[0.5] .XXX=±.008[0.20] .XXXX=±.0008[0.02] ANGLE = 40.5°	TITLE TACT SWITCH WITH LOCATING PINS	SHEET 1 OF 1	PKT. PJD
DO NOT SCALE	DATE 07/20/05	SIZE B	SCALE 10:1
	DRAWING NO. AMPTCFG1VTR		THIRD ANGLE PROJECTION
			REV B

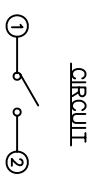
THIS DOCUMENT IS THE PROPERTY OF APDM COMPONENTS AND SHALL NOT BE COPIED, REPRODUCED, DISCLOSED OR USED AS THE BASIS FOR MANUFACTURING OR SALE WITHOUT PERMISSION OF A DULY AUTHORIZED REPRESENTATIVE OF APDM COMPONENTS INC.

P.C.B. LAYOUT



DATE	SYM	REVISION RECORD	DWN.	CK.
1/06	A	ECO# 526	CD	PD
5/08	B	ECO# 778	CD	PD

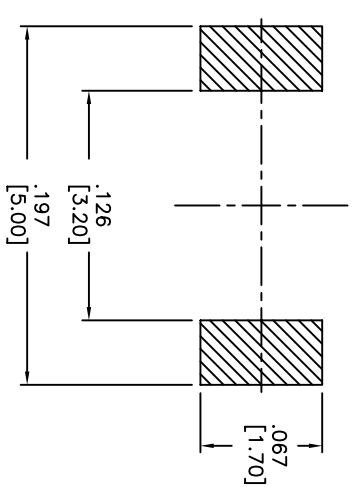
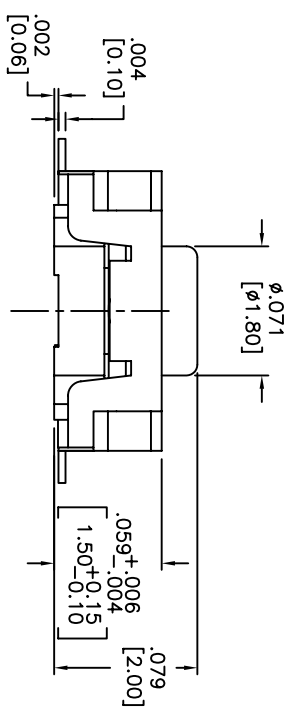
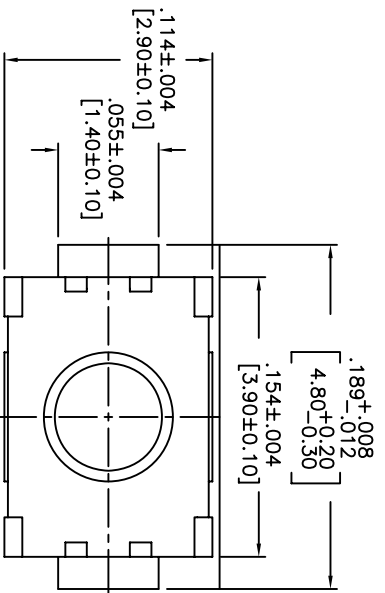
DESCRIPTION: VERTICAL PUSH MECHANICAL CONTACT SWITCH.
 SPECIFICATIONS:
 OPERATION FORCE: 220 ± 65gf
 OPERATION TEMP.: -25°C TO +70°C.
 STORAGE TEMP.: -30°C TO +80°C.
 ELECTRICAL LIFE: 200,000 CYCLES.
 RATING: 50mA, 12VDC.
 VIBRATION RESISTANCE: PASSES METHOD 201A
 MIL-STD-202F
 SHOCK RESISTANCE: 50G PER METHOD 213B
 MIL-STD-202F
 CONTACT RESISTANCE: 100mΩ MAX.
 INSULATION RESISTANCE: 100MΩ MIN. AT 100VDC.
 DIELECTRIC STRENGTH: 100VAC/1 MINUTE.
 CONTACT ARRANGEMENT: 1 POLE 1 THROW.
 MATERIALS:
 COVER: STAINLESS STEEL
 BASE: LCP HIGH-TEMP. THERMOPLASTIC.
 COLOR, WHITE.
 STEM: LCP HIGH-TEMP. THERMOPLASTIC.
 COLOR, BLACK.
 CONTACT DISK: STAINLESS STEEL WITH SILVER CLADDING
 TERMINAL: BRASS WITH SILVER PLATING
 TAPE & REEL PACKAGING, 2,000 PER REEL
 SOLDERING:
 HAND SOLDERING: 30 WATT IRON AT 320°C FOR 2 SECONDS
 IR REFLOW: 240°C MAX
 ROHS COMPLIANT
 LEAD FREE PROCESS COMPATIBLE



0A. INSPECT: DESIGNATES CRITICAL DIMENSION TOLERANCES (UNLESS OTHERWISE SPECIFIED) .XX = ±.02 [0.5] .XXX = ±.008 [0.20] .XXXX = ±.0008 [0.02] ANGLE = 40.5°		63 Neck Rd. 01835 Haverhill, MA 01835 Phone: 978-372-5554 Fax: 978-372-5554		DRN. CJD BR. BR. OR. PJD
TITLE TACT SWITCH	SHEET 1 OF 1	SIZE B	SCALE 15:1	THIRD ANGLE PROJECTION
DO NOT SCALE DRAWING	DATE 01/23/06	DRAWING NO. AMPTLP2VTR	REV B	

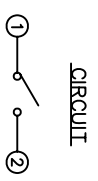
THIS DOCUMENT IS THE PROPERTY OF APDM COMPONENTS AND SHALL NOT BE COPIED, REPRODUCED, DISCLOSED OR SALE WITHOUT PERMISSION OF A DULY AUTHORIZED REPRESENTATIVE OF APDM COMPONENTS INC.

P.C.B. LAYOUT



HATCHED AREA SHOWS SOLDERING LAND

DESCRIPTION: VERTICAL PUSH MECHANICAL CONTACT SWITCH.
 SPECIFICATIONS:
 OPERATION FORCE: 160± 50gf
 OPERATION TEMP.: -25°C TO +70°C.
 STORAGE TEMP.: -30°C TO +80°C.
 ELECTRICAL LIFE: 200,000 CYCLES.
 RATING: 50mA, 12VDC.
 VIBRATION RESISTANCE: PASSES METHOD 201A
 MIL-STD-202F
 SHOCK RESISTANCE: 50G PER METHOD 213B
 MIL-STD-202F
 CONTACT RESISTANCE: 100mΩ MAX.
 INSULATION RESISTANCE: 100MΩ MIN. AT 100VDC.
 DIELECTRIC STRENGTH: 100VAC/1 MINUTE.
 CONTACT ARRANGEMENT: 1 POLE 1 THROW.
 MATERIALS:
 COVER: STAINLESS STEEL
 BASE: LCP HIGH-TEMP. THERMOPLASTIC.
 COLOR, WHITE.
 STEM: LCP HIGH-TEMP. THERMOPLASTIC.
 COLOR, BLACK.
 CONTACT DISK: STAINLESS STEEL WITH SILVER CLADDING
 TERMINAL: BRASS WITH SILVER PLATING
 TAPE: TEFLON.
 TAPE & REEL PACKAGING, 2,000 PER REEL
 SOLDERING:
 HAND SOLDERING: 30 WATT IRON AT 320°C FOR 2 SECONDS
 IR REFLOW: 260°C MAX
 RoHS COMPLIANT
 LEAD FREE PROCESS COMPATIBLE



DATE	SYM	REVISION RECORD	DWN.	CK.
5/08	B	ECO# 778	CD	PD

Q.A. INSPECT:		DESIGNER'S INITIAL:		DWN. CJD	
DIMENSION		TOLERANCES (UNLESS OTHERWISE SPECIFIED)		P.D.	
.XX = ±.02 [0.5]		.XXX = ±.008 [0.20]		THIRD ANGLE PROJECTION	
.XXXX = ±.0008 [0.02]		ANGLE = 30.5°		REV B	
DO NOT SCALE		DATE: 01/23/06		DRAWING NO. AMPTFP2VTR	

1 2 3 4 5 6 7 8



Компания «ЭлектроПласт» предлагает заключение долгосрочных отношений при поставках импортных электронных компонентов на взаимовыгодных условиях!

Наши преимущества:

- Оперативные поставки широкого спектра электронных компонентов отечественного и импортного производства напрямую от производителей и с крупнейших мировых складов;
- Поставка более 17-ти миллионов наименований электронных компонентов;
- Поставка сложных, дефицитных, либо снятых с производства позиций;
- Оперативные сроки поставки под заказ (от 5 рабочих дней);
- Экспресс доставка в любую точку России;
- Техническая поддержка проекта, помощь в подборе аналогов, поставка прототипов;
- Система менеджмента качества сертифицирована по Международному стандарту ISO 9001;
- Лицензия ФСБ на осуществление работ с использованием сведений, составляющих государственную тайну;
- Поставка специализированных компонентов (Xilinx, Altera, Analog Devices, Intersil, Interpoint, Microsemi, Aeroflex, Peregrine, Syfer, Eurofarad, Texas Instrument, Miteq, Cobham, E2V, MA-COM, Hittite, Mini-Circuits, General Dynamics и др.);

Помимо этого, одним из направлений компании «ЭлектроПласт» является направление «Источники питания». Мы предлагаем Вам помощь Конструкторского отдела:

- Подбор оптимального решения, техническое обоснование при выборе компонента;
- Подбор аналогов;
- Консультации по применению компонента;
- Поставка образцов и прототипов;
- Техническая поддержка проекта;
- Защита от снятия компонента с производства.



Как с нами связаться

Телефон: 8 (812) 309 58 32 (многоканальный)

Факс: 8 (812) 320-02-42

Электронная почта: org@eplast1.ru

Адрес: 198099, г. Санкт-Петербург, ул. Калинина, дом 2, корпус 4, литера А.