

Type SLP 105 °C Snap-In Aluminum Electrolytic

Best Value 105 °C Snap-In Type



Type SLP is the best value package snap-in series for 105 °C, 3000 h operation. This series is the most cost-effective choice for DC filtering and power supply applications where high temperature, long life and high ripple capability are needed.

Highlights

- 3000 h ripple load life at rated voltage
- 105 °C rated
- Small case size with high capacitance
- Best for switching power supplies
- 22 mm to 35 mm diameter, 10 mm lead spacing
- Best value snap-in type
- High ripple current

Specifications

| Temperature Range | -40 °C to +105 °C ≤ 100 Vdc -25 °C to +105 °C ≥ 160 Vdc | | | | | | | | | | | | | | | | | | | | | | | |
|---------------------------------|--|---------------|--------|-------------|--------|------|------|------|------|---------|-------|--------|-------|-------------|--------------|------|------|------|------|---------------|------|------|------|------|
| Rated Voltage Range | 10 Vdc to 450 Vdc | | | | | | | | | | | | | | | | | | | | | | | |
| Capacitance Range | 47 μF to 56,000 μF | | | | | | | | | | | | | | | | | | | | | | | |
| Capacitance Tolerance | ±20% | | | | | | | | | | | | | | | | | | | | | | | |
| Leakage Current | ≤ 3 √CV μA at 5 minutes | | | | | | | | | | | | | | | | | | | | | | | |
| Ripple Current Multipliers | <p>Ambient Temperature</p> <table border="1"> <thead> <tr> <th>20 °C - 45 °C</th> <th>65 °C</th> <th>85 °C</th> <th>105 °C</th> </tr> </thead> <tbody> <tr> <td>2.00</td> <td>1.89</td> <td>1.52</td> <td>1.00</td> </tr> </tbody> </table> <p>Frequency</p> <table border="1"> <thead> <tr> <th>Voltage</th> <th>60 Hz</th> <th>120 Hz</th> <th>1 kHz</th> <th>10 kHz & Up</th> </tr> </thead> <tbody> <tr> <td>10 - 100 Vdc</td> <td>0.90</td> <td>1.00</td> <td>1.15</td> <td>1.25</td> </tr> <tr> <td>160 - 450 Vdc</td> <td>0.80</td> <td>1.00</td> <td>1.25</td> <td>1.47</td> </tr> </tbody> </table> <p>To apply multipliers, see ratings tables for ripple current values</p> | 20 °C - 45 °C | 65 °C | 85 °C | 105 °C | 2.00 | 1.89 | 1.52 | 1.00 | Voltage | 60 Hz | 120 Hz | 1 kHz | 10 kHz & Up | 10 - 100 Vdc | 0.90 | 1.00 | 1.15 | 1.25 | 160 - 450 Vdc | 0.80 | 1.00 | 1.25 | 1.47 |
| 20 °C - 45 °C | 65 °C | 85 °C | 105 °C | | | | | | | | | | | | | | | | | | | | | |
| 2.00 | 1.89 | 1.52 | 1.00 | | | | | | | | | | | | | | | | | | | | | |
| Voltage | 60 Hz | 120 Hz | 1 kHz | 10 kHz & Up | | | | | | | | | | | | | | | | | | | | |
| 10 - 100 Vdc | 0.90 | 1.00 | 1.15 | 1.25 | | | | | | | | | | | | | | | | | | | | |
| 160 - 450 Vdc | 0.80 | 1.00 | 1.25 | 1.47 | | | | | | | | | | | | | | | | | | | | |
| Low Temperature Characteristics | Impedance ratio: $Z_{-20°C} / Z_{+25°C}$ ≤ 10 (10 Vdc) ≤ 8 (16-50 Vdc) ≤ 4 (63-100 Vdc) ≤ 3 (150-450 Vdc) | | | | | | | | | | | | | | | | | | | | | | | |
| Endurance Life | 3,000 h @ full load @105 °C Δ Capacitance ±20% ESR ≤200% of limit DCL 100 % of limit | | | | | | | | | | | | | | | | | | | | | | | |
| Shelf Life | 1,000 h @ 105 °C Δ Capacitance ±20% ESR ≤150% of limit DCL 100 % of limit | | | | | | | | | | | | | | | | | | | | | | | |
| Vibration | 10 Hz to 55 Hz , 0.06" and 10g max 2 h for each plane | | | | | | | | | | | | | | | | | | | | | | | |
| RoHS Compliant | | | | | | | | | | | | | | | | | | | | | | | | |

Type SLP 105 °C Snap-In Aluminum Electrolytic

Best Value 105 °C Snap-In Type

Part Numbering System



821 = 820 μ F
332 = 3300 μ F
103 = 10,000 μ F

M = \pm 20%

025 = 25 Vdc
250 = 250 Vdc

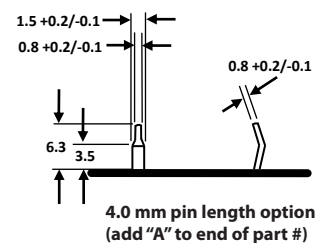
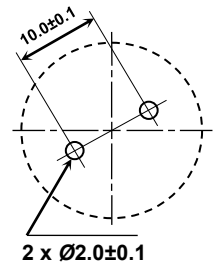
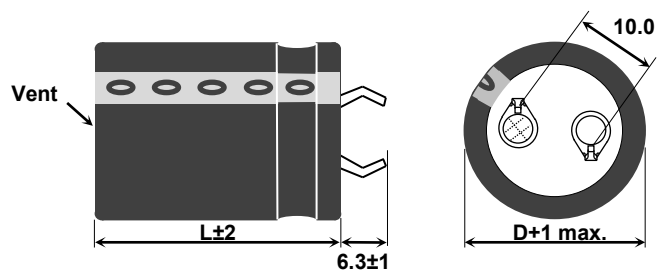
P = Polarized

3 = PVC

Blank = 2 pins snap-in 6.3 mm L
A = 2 pins snap-in 4.0 mm L

| Diameter | | Length | | | | | |
|----------|--------|--------|--------|--------|--------|--------|--------|
| | | 25 | 30 | 35 | 40 | 45 | 50 |
| mm | (in) | (1.00) | (1.18) | (1.38) | (1.57) | (1.77) | (2.00) |
| 22 | (0.87) | A1 | A3 | A5 | A7 | A4 | A9 |
| 25 | (1.00) | C1 | C3 | C5 | C7 | C4 | C9 |
| 30 | (1.18) | E1 | E3 | E5 | E7 | E4 | E9 |
| 35 | (1.38) | H1 | H3 | H5 | H7 | H4 | H9 |

Outline Drawing



PC Board Mounting Holes

4.0 mm pin length option (add "A" to end of part #)

Ratings

| Cap (μF) | 3000 h @ 105 °C Catalog Part Number | Max 25 °C ESR (Ω) 120 Hz 20kHz | Max 105 °C Ripple (A _{rms}) 120 Hz 20kHz | Nominal Size (DxL) (mm) |
|------------------------------|-------------------------------------|--------------------------------|--|-------------------------|
| 10 Vdc (13 Vdc Surge) | | | | |
| 10000 | SLP103M010A1P3 | 0.073 | 0.055 | 1.80 2.25 22 x 25 |
| 12000 | SLP123M010A3P3 | 0.061 | 0.046 | 2.20 2.75 22 x 30 |
| 12000 | SLP123M010C1P3 | 0.061 | 0.046 | 2.20 2.75 25 x 25 |
| 15000 | SLP153M010A5P3 | 0.049 | 0.037 | 2.30 2.88 22 x 35 |
| 15000 | SLP153M010C1P3 | 0.049 | 0.037 | 2.30 2.88 25 x 25 |
| 18000 | SLP183M010A7P3 | 0.041 | 0.031 | 2.52 3.15 22 x 40 |
| 18000 | SLP183M010C3P3 | 0.041 | 0.031 | 2.40 3.00 25 x 30 |
| 22000 | SLP223M010A4P3 | 0.033 | 0.025 | 2.60 3.25 22 x 45 |
| 22000 | SLP223M010C5P3 | 0.033 | 0.025 | 2.60 3.25 25 x 35 |
| 27000 | SLP273M010A9P3 | 0.027 | 0.020 | 3.19 3.99 22 x 50 |
| 27000 | SLP273M010C7P3 | 0.027 | 0.020 | 3.10 3.88 25 x 40 |
| 33000 | SLP333M010C4P3 | 0.022 | 0.017 | 3.40 4.25 25 x 45 |
| 33000 | SLP333M010H3P3 | 0.022 | 0.017 | 3.40 4.25 35 x 30 |
| 39000 | SLP393M010E7P3 | 0.019 | 0.014 | 3.79 4.74 30 x 40 |
| 39000 | SLP393M010H3P3 | 0.019 | 0.014 | 3.70 4.63 35 x 30 |
| 47000 | SLP473M010E4P3 | 0.016 | 0.012 | 4.26 5.33 30 x 45 |
| 47000 | SLP473M010H5P3 | 0.016 | 0.012 | 4.20 5.25 35 x 35 |
| 56000 | SLP563M010H7P3 | 0.013 | 0.010 | 5.00 6.25 35 x 40 |
| 16 Vdc (20 Vdc Surge) | | | | |
| 6800 | SLP682M016A1P3 | 0.098 | 0.074 | 2.20 2.75 22 x 25 |
| 8200 | SLP822M016A3P3 | 0.081 | 0.061 | 2.40 3.00 22 x 30 |
| 10000 | SLP103M016A3P3 | 0.066 | 0.050 | 2.60 3.25 22 x 30 |

Additional Voltages and Sizes available at www.cde.com/catalogs/SLP.pdf

| Cap (μF) | 3000 h @ 105 °C Catalog Part Number | Max 25 °C ESR (Ω) 120 Hz 20kHz | Max 105 °C Ripple (A _{rms}) 120 Hz 20kHz | Nominal Size (DxL) (mm) |
|------------------------------|-------------------------------------|--------------------------------|--|-------------------------|
| 16 Vdc (20 Vdc Surge) | | | | |
| 10000 | SLP103M016C1P3 | 0.066 | 0.050 | 2.60 3.25 25 x 25 |
| 12000 | SLP123M016A5P3 | 0.055 | 0.041 | 2.90 3.63 22 x 35 |
| 12000 | SLP123M016C3P3 | 0.055 | 0.041 | 2.90 3.63 25 x 30 |
| 15000 | SLP153M016A7P3 | 0.044 | 0.033 | 3.20 4.00 22 x 40 |
| 15000 | SLP153M016C5P3 | 0.044 | 0.033 | 3.25 4.06 25 x 35 |
| 15000 | SLP153M016E1P3 | 0.044 | 0.033 | 3.11 3.89 30 x 25 |
| 18000 | SLP183M016A4P3 | 0.037 | 0.028 | 3.50 4.38 22 x 45 |
| 18000 | SLP183M016C7P3 | 0.037 | 0.028 | 3.50 4.38 25 x 40 |
| 18000 | SLP183M016E3P3 | 0.037 | 0.028 | 3.50 4.38 30 x 30 |
| 22000 | SLP223M016C4P3 | 0.030 | 0.023 | 3.80 4.75 25 x 45 |
| 22000 | SLP223M016E3P3 | 0.030 | 0.023 | 3.80 4.75 30 x 30 |
| 22000 | SLP223M016H3P3 | 0.030 | 0.023 | 3.80 4.75 35 x 30 |
| 27000 | SLP273M016C9P3 | 0.025 | 0.019 | 4.20 5.25 25 x 50 |
| 27000 | SLP273M016E5P3 | 0.025 | 0.019 | 4.20 5.25 30 x 35 |
| 27000 | SLP273M016H3P3 | 0.025 | 0.019 | 4.20 5.25 35 x 30 |
| 33000 | SLP333M016E7P3 | 0.020 | 0.015 | 4.70 5.88 30 x 40 |
| 33000 | SLP333M016H5P3 | 0.020 | 0.015 | 4.70 5.88 35 x 35 |
| 39000 | SLP393M016E4P3 | 0.017 | 0.013 | 4.90 6.13 30 x 45 |
| 39000 | SLP393M016H7P3 | 0.017 | 0.013 | 5.10 6.38 35 x 40 |
| 47000 | SLP473M016E9P3 | 0.014 | 0.011 | 5.27 6.59 30 x 50 |
| 47000 | SLP473M016H4P3 | 0.014 | 0.011 | 5.50 6.88 35 x 45 |

Type SLP 105 °C Snap-In Aluminum Electrolytic

Best Value 105 °C Snap-In Type

| Cap (µF) | 3000 h @ 105 °C Catalog Part Number | Max 25 °C ESR (Ω) | | Max 105 °C Ripple (A _{rms}) | | Nominal Size (DxL) (mm) |
|------------------------------|---|----------------------|-------|--|-------|-------------------------------|
| | | 120 Hz | 20kHz | 120 Hz | 20kHz | |
| 25 Vdc (32 Vdc Surge) | | | | | | |
| 3300 | SLP332M025A1P3 | 0.181 | 0.136 | 1.70 | 2.13 | 22 x 25 |
| 4700 | SLP472M025A1P3 | 0.127 | 0.095 | 2.00 | 2.50 | 22 x 25 |
| 5600 | SLP562M025A3P3 | 0.107 | 0.080 | 2.20 | 2.75 | 22 x 30 |
| 6800 | SLP682M025A3P3 | 0.088 | 0.066 | 2.40 | 3.00 | 22 x 30 |
| 6800 | SLP682M025C1P3 | 0.088 | 0.066 | 2.40 | 3.00 | 25 x 25 |
| 8200 | SLP822M025A5P3 | 0.073 | 0.055 | 2.70 | 3.38 | 22 x 35 |
| 8200 | SLP822M025C3P3 | 0.073 | 0.055 | 2.70 | 3.38 | 25 x 30 |
| 8200 | SLP822M025E1P3 | 0.073 | 0.055 | 2.70 | 3.38 | 30 x 25 |
| 10000 | SLP103M025A7P3 | 0.060 | 0.045 | 3.00 | 3.75 | 22 x 40 |
| 10000 | SLP103M025C5P3 | 0.060 | 0.045 | 3.00 | 3.75 | 25 x 35 |
| 10000 | SLP103M025E3P3 | 0.060 | 0.045 | 3.00 | 3.75 | 30 x 30 |
| 12000 | SLP123M025A9P3 | 0.050 | 0.038 | 3.20 | 4.00 | 22 x 50 |
| 12000 | SLP123M025C7P3 | 0.050 | 0.038 | 3.20 | 4.00 | 25 x 40 |
| 15000 | SLP153M025C4P3 | 0.040 | 0.030 | 3.60 | 4.50 | 25 x 45 |
| 15000 | SLP153M025E5P3 | 0.040 | 0.030 | 3.60 | 4.50 | 30 x 35 |
| 15000 | SLP153M025H3P3 | 0.040 | 0.030 | 3.60 | 4.50 | 35 x 30 |
| 18000 | SLP183M025E7P3 | 0.033 | 0.025 | 3.90 | 4.88 | 30 x 40 |
| 18000 | SLP183M025H5P3 | 0.033 | 0.025 | 3.90 | 4.88 | 35 x 35 |
| 22000 | SLP223M025E4P3 | 0.027 | 0.020 | 4.30 | 5.38 | 30 x 45 |
| 22000 | SLP223M025H5P3 | 0.027 | 0.020 | 4.30 | 5.38 | 35 x 35 |
| 27000 | SLP273M025H4P3 | 0.022 | 0.017 | 4.80 | 6.00 | 35 x 45 |
| 33000 | SLP333M025H9P3 | 0.018 | 0.014 | 5.55 | 6.94 | 35 x 50 |
| 35 Vdc (44 Vdc Surge) | | | | | | |
| 3900 | SLP392M035A3P3 | 0.136 | 0.102 | 2.00 | 2.50 | 22 x 30 |
| 4700 | SLP472M035A5P3 | 0.113 | 0.085 | 2.20 | 2.75 | 22 x 35 |
| 4700 | SLP472M035C1P3 | 0.113 | 0.085 | 2.20 | 2.75 | 25 x 25 |
| 4700 | SLP472M035C5P3 | 0.113 | 0.085 | 2.53 | 3.16 | 25 x 35 |
| 5600 | SLP562M035A5P3 | 0.095 | 0.071 | 2.40 | 3.00 | 22 x 35 |
| 5600 | SLP562M035C3P3 | 0.095 | 0.071 | 2.40 | 3.00 | 25 x 30 |
| 6800 | SLP682M035A7P3 | 0.078 | 0.059 | 2.60 | 3.25 | 22 x 40 |
| 6800 | SLP682M035C5P3 | 0.078 | 0.059 | 2.60 | 3.25 | 25 x 35 |
| 6800 | SLP682M035E1P3 | 0.078 | 0.059 | 2.78 | 3.48 | 30 x 25 |
| 8200 | SLP822M035A9P3 | 0.065 | 0.049 | 2.90 | 3.63 | 22 x 50 |
| 8200 | SLP822M035C7P3 | 0.065 | 0.049 | 2.90 | 3.63 | 25 x 40 |
| 8200 | SLP822M035E3P3 | 0.065 | 0.049 | 2.90 | 3.63 | 30 x 30 |
| 10000 | SLP103M035C4P3 | 0.053 | 0.040 | 3.20 | 4.00 | 25 x 45 |
| 10000 | SLP103M035E5P3 | 0.053 | 0.040 | 3.20 | 4.00 | 30 x 35 |
| 10000 | SLP103M035C7P3 | 0.053 | 0.040 | 3.04 | 3.80 | 25 x 40 |
| 12000 | SLP123M035C9P3 | 0.044 | 0.033 | 3.50 | 4.38 | 25 x 50 |
| 12000 | SLP123M035E7P3 | 0.044 | 0.033 | 3.50 | 4.38 | 30 x 40 |
| 12000 | SLP123M035H3P3 | 0.044 | 0.033 | 3.50 | 4.38 | 35 x 30 |
| 15000 | SLP153M035E4P3 | 0.035 | 0.026 | 3.90 | 4.88 | 30 x 45 |
| 15000 | SLP153M035H5P3 | 0.035 | 0.026 | 3.90 | 4.88 | 35 x 35 |

Additional Voltages and Sizes available at www.cde.com/catalogs/SLP.pdf

| Cap (µF) | 3000 h @ 105 °C Catalog Part Number | Max 25 °C ESR (Ω) | | Max 105 °C Ripple (A _{rms}) | | Nominal Size (DxL) (mm) |
|------------------------------|---|----------------------|-------|--|-------|-------------------------------|
| | | 120 Hz | 20kHz | 120 Hz | 20kHz | |
| 35 Vdc (44 Vdc Surge) | | | | | | |
| 18000 | SLP183M035H7P3 | 0.029 | 0.022 | 4.51 | 5.64 | 35 x 40 |
| 22000 | SLP223M035H4P3 | 0.024 | 0.018 | 5.24 | 6.55 | 35 x 45 |
| 22000 | SLP223M035H9P3 | 0.024 | 0.018 | 5.48 | 6.85 | 35 x 50 |
| 50 Vdc (63 Vdc Surge) | | | | | | |
| 1800 | SLP182M050A1P3 | 0.258 | 0.194 | 1.50 | 1.88 | 22 x 25 |
| 2200 | SLP222M050A3P3 | 0.211 | 0.158 | 1.70 | 2.13 | 22 x 30 |
| 2700 | SLP272M050A3P3 | 0.172 | 0.129 | 1.80 | 2.25 | 22 x 30 |
| 2700 | SLP272M050C1P3 | 0.172 | 0.129 | 1.80 | 2.25 | 25 x 25 |
| 3300 | SLP332M050A5P3 | 0.141 | 0.106 | 2.00 | 2.50 | 22 x 35 |
| 3300 | SLP332M050C3P3 | 0.141 | 0.106 | 2.00 | 2.50 | 25 x 30 |
| 3900 | SLP392M050A7P3 | 0.119 | 0.089 | 2.23 | 2.79 | 22 x 40 |
| 3900 | SLP392M050C3P3 | 0.119 | 0.089 | 2.20 | 2.75 | 25 x 30 |
| 3900 | SLP392M050E1P3 | 0.119 | 0.089 | 2.20 | 2.75 | 30 x 25 |
| 4700 | SLP472M050A4P3 | 0.099 | 0.074 | 2.50 | 3.13 | 22 x 45 |
| 4700 | SLP472M050C5P3 | 0.099 | 0.074 | 2.43 | 3.04 | 25 x 35 |
| 4700 | SLP472M050E3P3 | 0.099 | 0.074 | 2.50 | 3.13 | 30 x 30 |
| 5600 | SLP562M050A9P3 | 0.083 | 0.062 | 2.80 | 3.50 | 22 x 50 |
| 5600 | SLP562M050C7P3 | 0.083 | 0.062 | 2.80 | 3.50 | 25 x 40 |
| 5600 | SLP562M050E3P3 | 0.083 | 0.062 | 2.76 | 3.45 | 30 x 30 |
| 6800 | SLP682M050C4P3 | 0.068 | 0.051 | 3.30 | 4.13 | 25 x 45 |
| 6800 | SLP682M050E5P3 | 0.068 | 0.051 | 3.30 | 4.13 | 30 x 35 |
| 6800 | SLP682M050H3P3 | 0.068 | 0.051 | 3.30 | 4.13 | 35 x 30 |
| 8200 | SLP822M050E7P3 | 0.057 | 0.043 | 3.71 | 4.64 | 30 x 40 |
| 8200 | SLP822M050H5P3 | 0.057 | 0.043 | 3.85 | 4.81 | 35 x 35 |
| 10000 | SLP103M050E9P3 | 0.046 | 0.035 | 4.51 | 5.64 | 30 x 50 |
| 10000 | SLP103M050H7P3 | 0.046 | 0.035 | 4.49 | 5.61 | 35 x 40 |
| 12000 | SLP123M050H4P3 | 0.039 | 0.029 | 4.56 | 5.70 | 35 x 45 |
| 15000 | SLP153M050H9P3 | 0.031 | 0.023 | 4.80 | 6.00 | 35 x 50 |
| 63 Vdc (79 Vdc Surge) | | | | | | |
| 1200 | SLP122M063A1P3 | 0.332 | 0.249 | 1.40 | 1.75 | 22 x 25 |
| 1500 | SLP152M063A3P3 | 0.265 | 0.199 | 1.50 | 1.88 | 22 x 30 |
| 1800 | SLP182M063A3P3 | 0.221 | 0.166 | 1.70 | 2.13 | 22 x 30 |
| 1800 | SLP182M063C1P3 | 0.221 | 0.166 | 1.70 | 2.13 | 25 x 25 |
| 2200 | SLP222M063A5P3 | 0.181 | 0.136 | 2.00 | 2.50 | 22 x 35 |
| 2200 | SLP222M063C3P3 | 0.181 | 0.136 | 2.00 | 2.50 | 25 x 30 |
| 2700 | SLP272M063A7P3 | 0.147 | 0.110 | 2.20 | 2.75 | 22 x 40 |
| 2700 | SLP272M063C5P3 | 0.147 | 0.110 | 2.20 | 2.75 | 25 x 35 |
| 2700 | SLP272M063E1P3 | 0.147 | 0.110 | 2.20 | 2.75 | 30 x 25 |
| 3300 | SLP332M063A4P3 | 0.121 | 0.091 | 2.60 | 3.25 | 22 x 45 |
| 3300 | SLP332M063C5P3 | 0.121 | 0.091 | 2.39 | 2.99 | 25 x 35 |
| 3300 | SLP332M063E3P3 | 0.121 | 0.091 | 2.50 | 3.13 | 30 x 30 |
| 3900 | SLP392M063C7P3 | 0.102 | 0.077 | 2.57 | 3.21 | 25 x 40 |
| 3900 | SLP392M063E5P3 | 0.102 | 0.077 | 2.70 | 3.38 | 30 x 35 |

Type SLP 105 °C Snap-In Aluminum Electrolytic

Best Value 105 °C Snap-In Type

| Cap (µF) | 3000 h @ 105 °C Catalog Part Number | Max 25 °C ESR (Ω) | | Max 105 °C Ripple (A _{rms}) | | Nominal Size (DxL) (mm) |
|--------------------------------|---|----------------------|-------|--|-------|-------------------------------|
| | | 120 Hz | 20kHz | 120 Hz | 20kHz | |
| 63 Vdc (79 Vdc Surge) | | | | | | |
| 4700 | SLP472M063C9P3 | 0.085 | 0.064 | 3.00 | 3.75 | 25 x 50 |
| 4700 | SLP472M063E7P3 | 0.085 | 0.064 | 3.00 | 3.75 | 30 x 40 |
| 4700 | SLP472M063H3P3 | 0.085 | 0.064 | 3.00 | 3.75 | 35 x 30 |
| 5600 | SLP562M063E7P3 | 0.071 | 0.053 | 3.22 | 4.03 | 30 x 40 |
| 5600 | SLP562M063H5P3 | 0.071 | 0.053 | 3.30 | 4.13 | 35 x 35 |
| 6800 | SLP682M063E9P3 | 0.059 | 0.044 | 3.86 | 4.83 | 30 x 50 |
| 6800 | SLP682M063H7P3 | 0.059 | 0.044 | 3.84 | 4.80 | 35 x 40 |
| 8200 | SLP822M063H4P3 | 0.049 | 0.037 | 4.43 | 5.54 | 35 x 45 |
| 10000 | SLP103M063H9P3 | 0.040 | 0.030 | 5.11 | 6.39 | 35 x 50 |
| 10000 | SLP103M063H4P3 | 0.040 | 0.030 | 4.89 | 6.11 | 35 x 45 |
| 80 Vdc (100 Vdc Surge) | | | | | | |
| 1000 | SLP102M080A1P3 | 0.332 | 0.249 | 1.19 | 1.49 | 22 x 25 |
| 1200 | SLP122M080A3P3 | 0.276 | 0.207 | 1.50 | 1.88 | 22 x 30 |
| 1500 | SLP152M080A3P3 | 0.221 | 0.166 | 1.59 | 1.99 | 22 x 30 |
| 1500 | SLP152M080C1P3 | 0.221 | 0.166 | 1.59 | 1.99 | 25 x 25 |
| 1800 | SLP182M080A5P3 | 0.184 | 0.138 | 1.79 | 2.24 | 22 x 35 |
| 1800 | SLP182M080C3P3 | 0.184 | 0.138 | 1.71 | 2.14 | 25 x 30 |
| 2200 | SLP222M080A7P3 | 0.151 | 0.113 | 2.03 | 2.54 | 22 x 40 |
| 2200 | SLP222M080C5P3 | 0.151 | 0.113 | 2.10 | 2.63 | 25 x 35 |
| 2200 | SLP222M080E1P3 | 0.151 | 0.113 | 1.98 | 2.48 | 30 x 25 |
| 2700 | SLP272M080A4P3 | 0.123 | 0.092 | 2.39 | 2.99 | 22 x 45 |
| 2700 | SLP272M080C7P3 | 0.123 | 0.092 | 2.35 | 2.94 | 25 x 40 |
| 2700 | SLP272M080E3P3 | 0.123 | 0.092 | 2.35 | 2.94 | 30 x 30 |
| 3300 | SLP332M080C4P3 | 0.101 | 0.076 | 2.64 | 3.30 | 25 x 45 |
| 3300 | SLP332M080E5P3 | 0.101 | 0.076 | 2.61 | 3.26 | 30 x 35 |
| 3300 | SLP332M080H3P3 | 0.101 | 0.076 | 2.60 | 3.25 | 35 x 30 |
| 3900 | SLP392M080C9P3 | 0.085 | 0.064 | 2.92 | 3.65 | 25 x 50 |
| 3900 | SLP392M080E7P3 | 0.085 | 0.064 | 2.82 | 3.53 | 30 x 40 |
| 3900 | SLP392M080H3P3 | 0.085 | 0.064 | 2.97 | 3.71 | 35 x 30 |
| 4700 | SLP472M080E4P3 | 0.071 | 0.053 | 3.34 | 4.18 | 30 x 45 |
| 4700 | SLP472M080H5P3 | 0.071 | 0.053 | 3.38 | 4.23 | 35 x 35 |
| 5600 | SLP562M080E9P3 | 0.059 | 0.044 | 3.80 | 4.75 | 30 x 50 |
| 5600 | SLP562M080H7P3 | 0.059 | 0.044 | 3.80 | 4.75 | 35 x 40 |
| 6800 | SLP682M080H4P3 | 0.049 | 0.037 | 3.90 | 4.88 | 35 x 45 |
| 8200 | SLP822M080H9P3 | 0.040 | 0.030 | 4.20 | 5.25 | 35 x 50 |
| 100 Vdc (125 Vdc Surge) | | | | | | |
| 680 | SLP681M100A1P3 | 0.390 | 0.293 | 1.09 | 1.36 | 22 x 25 |
| 820 | SLP821M100A3P3 | 0.324 | 0.243 | 1.40 | 1.75 | 22 x 30 |
| 1000 | SLP102M100A3P3 | 0.265 | 0.199 | 1.47 | 1.84 | 22 x 30 |
| 1000 | SLP102M100C1P3 | 0.265 | 0.199 | 1.45 | 1.81 | 25 x 25 |
| 1200 | SLP122M100A5P3 | 0.221 | 0.166 | 1.69 | 2.11 | 22 x 35 |
| 1200 | SLP122M100C3P3 | 0.221 | 0.166 | 1.68 | 2.10 | 25 x 30 |
| 1500 | SLP152M100A7P3 | 0.177 | 0.133 | 1.97 | 2.46 | 22 x 40 |

Additional Voltages and Sizes available at www.cde.com/catalogs/SLP.pdf

| Cap (µF) | 3000 h @ 105 °C Catalog Part Number | Max 25 °C ESR (Ω) | | Max 105 °C Ripple (A _{rms}) | | Nominal Size (DxL) (mm) |
|--------------------------------|---|----------------------|-------|--|-------|-------------------------------|
| | | 120 Hz | 20kHz | 120 Hz | 20kHz | |
| 100 Vdc (125 Vdc Surge) | | | | | | |
| 1500 | SLP152M100C5P3 | 0.177 | 0.133 | 1.98 | 2.48 | 25 x 35 |
| 1500 | SLP152M100E1P3 | 0.177 | 0.133 | 1.95 | 2.44 | 30 x 25 |
| 1500 | SLP152M100E3P3 | 0.177 | 0.133 | 2.09 | 2.61 | 30 x 30 |
| 1800 | SLP182M100A4P3 | 0.147 | 0.110 | 2.23 | 2.79 | 22 x 45 |
| 1800 | SLP182M100C7P3 | 0.147 | 0.110 | 2.20 | 2.75 | 25 x 40 |
| 1800 | SLP182M100E3P3 | 0.147 | 0.110 | 2.20 | 2.75 | 30 x 30 |
| 2200 | SLP222M100C4P3 | 0.121 | 0.091 | 2.53 | 3.16 | 25 x 45 |
| 2200 | SLP222M100E5P3 | 0.121 | 0.091 | 2.55 | 3.19 | 30 x 35 |
| 2200 | SLP222M100H3P3 | 0.121 | 0.091 | 2.60 | 3.25 | 35 x 30 |
| 2700 | SLP272M100C9P3 | 0.098 | 0.074 | 2.82 | 3.53 | 25 x 50 |
| 2700 | SLP272M100E7P3 | 0.098 | 0.074 | 2.86 | 3.58 | 30 x 40 |
| 2700 | SLP272M100H5P3 | 0.098 | 0.074 | 2.90 | 3.63 | 35 x 35 |
| 3300 | SLP332M100E4P3 | 0.080 | 0.060 | 3.30 | 4.13 | 30 x 45 |
| 3300 | SLP332M100H5P3 | 0.080 | 0.060 | 3.25 | 4.06 | 35 x 35 |
| 3900 | SLP392M100E9P3 | 0.068 | 0.051 | 3.60 | 4.50 | 30 x 50 |
| 3900 | SLP392M100H7P3 | 0.068 | 0.051 | 3.67 | 4.59 | 35 x 40 |
| 4700 | SLP472M100H4P3 | 0.056 | 0.042 | 3.80 | 4.75 | 35 x 45 |
| 5600 | SLP562M100H9P3 | 0.047 | 0.035 | 4.05 | 5.06 | 35 x 50 |
| 160 Vdc (200Vdc Surge) | | | | | | |
| 330 | SLP331M160A1P3 | 0.603 | 0.452 | 1.20 | 1.76 | 22 x 25 |
| 390 | SLP391M160A3P3 | 0.510 | 0.383 | 1.30 | 1.91 | 22 x 30 |
| 470 | SLP471M160A3P3 | 0.423 | 0.317 | 1.55 | 2.28 | 22 x 30 |
| 470 | SLP471M160C1P3 | 0.423 | 0.317 | 1.55 | 2.28 | 25 x 25 |
| 560 | SLP561M160A5P3 | 0.355 | 0.266 | 1.67 | 2.45 | 22 x 35 |
| 560 | SLP561M160C3P3 | 0.355 | 0.266 | 1.67 | 2.45 | 25 x 30 |
| 680 | SLP681M160A7P3 | 0.293 | 0.220 | 1.82 | 2.68 | 22 x 40 |
| 680 | SLP681M160C5P3 | 0.293 | 0.220 | 1.85 | 2.72 | 25 x 35 |
| 680 | SLP681M160E1P3 | 0.293 | 0.220 | 1.82 | 2.68 | 30 x 25 |
| 820 | SLP821M160A4P3 | 0.243 | 0.182 | 2.04 | 3.00 | 22 x 45 |
| 820 | SLP821M160C7P3 | 0.243 | 0.182 | 2.04 | 3.00 | 25 x 40 |
| 820 | SLP821M160E3P3 | 0.243 | 0.182 | 2.04 | 3.00 | 30 x 30 |
| 1000 | SLP102M160C4P3 | 0.199 | 0.149 | 2.40 | 3.53 | 25 x 45 |
| 1000 | SLP102M160E5P3 | 0.199 | 0.149 | 2.25 | 3.31 | 30 x 35 |
| 1200 | SLP122M160C9P3 | 0.166 | 0.125 | 2.62 | 3.85 | 25 x 50 |
| 1200 | SLP122M160E7P3 | 0.166 | 0.125 | 2.49 | 3.66 | 30 x 40 |
| 1200 | SLP122M160H3P3 | 0.166 | 0.125 | 2.49 | 3.66 | 35 x 30 |
| 1500 | SLP152M160E4P3 | 0.133 | 0.100 | 2.84 | 4.17 | 30 x 45 |
| 1500 | SLP152M160H5P3 | 0.133 | 0.100 | 2.84 | 4.17 | 35 x 35 |
| 1800 | SLP182M160E9P3 | 0.111 | 0.083 | 3.32 | 4.88 | 30 x 50 |
| 1800 | SLP182M160H7P3 | 0.111 | 0.083 | 3.00 | 4.41 | 35 x 40 |
| 2200 | SLP222M160H4P3 | 0.090 | 0.068 | 3.50 | 5.15 | 35 x 45 |
| 180 Vdc (225Vdc Surge) | | | | | | |
| 270 | SLP271M180A1P3 | 0.737 | 0.553 | 1.00 | 1.47 | 22 x 25 |

Type SLP 105 °C Snap-In Aluminum Electrolytic

Best Value 105 °C Snap-In Type

| Cap (µF) | 3000 h @ 105 °C Catalog Part Number | Max 25 °C ESR (Ω) | | Max 105 °C Ripple (A _{rms}) | | Nominal Size (DxL) (mm) |
|--------------------------------|---|----------------------|-------|--|-------|-------------------------------|
| | | 120 Hz | 20kHz | 120 Hz | 20kHz | |
| 180 Vdc (225Vdc Surge) | | | | | | |
| 330 | SLP331M180A3P3 | 0.603 | 0.452 | 1.20 | 1.76 | 22 x 30 |
| 390 | SLP391M180A3P3 | 0.510 | 0.383 | 1.35 | 1.98 | 22 x 30 |
| 390 | SLP391M180C1P3 | 0.510 | 0.383 | 1.35 | 1.98 | 25 x 25 |
| 470 | SLP471M180A5P3 | 0.423 | 0.317 | 1.50 | 2.21 | 22 x 35 |
| 470 | SLP471M180C3P3 | 0.423 | 0.317 | 1.50 | 2.21 | 25 x 30 |
| 560 | SLP561M180A7P3 | 0.355 | 0.266 | 1.67 | 2.45 | 22 x 40 |
| 560 | SLP561M180C3P3 | 0.355 | 0.266 | 1.67 | 2.45 | 25 x 30 |
| 560 | SLP561M180E1P3 | 0.355 | 0.266 | 1.67 | 2.45 | 30 x 25 |
| 680 | SLP681M180A4P3 | 0.293 | 0.220 | 1.78 | 2.62 | 22 x 45 |
| 680 | SLP681M180C5P3 | 0.293 | 0.220 | 1.78 | 2.62 | 25 x 35 |
| 680 | SLP681M180E3P3 | 0.293 | 0.220 | 1.78 | 2.62 | 30 x 30 |
| 820 | SLP821M180A9P3 | 0.243 | 0.182 | 2.04 | 3.00 | 22 x 50 |
| 820 | SLP821M180C7P3 | 0.243 | 0.182 | 2.04 | 3.00 | 25 x 40 |
| 820 | SLP821M180E3P3 | 0.243 | 0.182 | 2.04 | 3.00 | 30 x 30 |
| 1000 | SLP102M180C4P3 | 0.199 | 0.149 | 2.30 | 3.38 | 25 x 45 |
| 1000 | SLP102M180E5P3 | 0.199 | 0.149 | 2.30 | 3.38 | 30 x 35 |
| 1000 | SLP102M180H3P3 | 0.199 | 0.149 | 2.30 | 3.38 | 35 x 30 |
| 1200 | SLP122M180E7P3 | 0.166 | 0.125 | 2.55 | 3.75 | 30 x 40 |
| 1200 | SLP122M180H5P3 | 0.166 | 0.125 | 2.55 | 3.75 | 35 x 35 |
| 1500 | SLP152M180E4P3 | 0.133 | 0.100 | 2.90 | 4.26 | 30 x 45 |
| 1500 | SLP152M180H7P3 | 0.133 | 0.100 | 2.90 | 4.26 | 35 x 40 |
| 1800 | SLP182M180H4P3 | 0.111 | 0.083 | 3.30 | 4.85 | 35 x 45 |
| 2200 | SLP222M180H9P3 | 0.090 | 0.068 | 3.65 | 5.37 | 35 x 50 |
| 200 Vdc (250 Vdc Surge) | | | | | | |
| 220 | SLP221M200A1P3 | 0.905 | 0.679 | 0.99 | 1.46 | 22 x 25 |
| 220 | SLP221M200A3P3 | 0.905 | 0.679 | 1.07 | 1.57 | 22 x 30 |
| 270 | SLP271M200A1P3 | 0.737 | 0.553 | 1.10 | 1.62 | 22 x 25 |
| 330 | SLP331M200A3P3 | 0.603 | 0.452 | 1.25 | 1.84 | 22 x 30 |
| 330 | SLP331M200C1P3 | 0.603 | 0.452 | 1.25 | 1.84 | 25 x 25 |
| 330 | SLP331M200C3P3 | 0.603 | 0.452 | 1.35 | 1.98 | 25 x 30 |
| 390 | SLP391M200A5P3 | 0.510 | 0.383 | 1.35 | 1.98 | 22 x 35 |
| 390 | SLP391M200C3P3 | 0.510 | 0.383 | 1.35 | 1.98 | 25 x 30 |
| 470 | SLP471M200A7P3 | 0.423 | 0.317 | 1.50 | 2.21 | 22 x 40 |
| 470 | SLP471M200C3P3 | 0.423 | 0.317 | 1.50 | 2.21 | 25 x 30 |
| 470 | SLP471M200C5P3 | 0.423 | 0.317 | 1.60 | 2.35 | 25 x 35 |
| 470 | SLP471M200E1P3 | 0.423 | 0.317 | 1.50 | 2.21 | 30 x 25 |
| 560 | SLP561M200A4P3 | 0.355 | 0.266 | 1.67 | 2.45 | 22 x 45 |
| 560 | SLP561M200C5P3 | 0.355 | 0.266 | 1.70 | 2.50 | 25 x 35 |
| 560 | SLP561M200E1P3 | 0.355 | 0.266 | 1.67 | 2.45 | 30 x 25 |
| 680 | SLP681M200A9P3 | 0.293 | 0.220 | 1.78 | 2.62 | 22 x 50 |
| 680 | SLP681M200C5P3 | 0.293 | 0.220 | 1.72 | 2.53 | 25 x 35 |
| 680 | SLP681M200C7P3 | 0.293 | 0.220 | 1.82 | 2.68 | 25 x 40 |
| 680 | SLP681M200E3P3 | 0.293 | 0.220 | 1.78 | 2.62 | 30 x 30 |

Additional Voltages and Sizes available at www.cde.com/catalogs/SLP.pdf

| Cap (µF) | 3000 h @ 105 °C Catalog Part Number | Max 25 °C ESR (Ω) | | Max 105 °C Ripple (A _{rms}) | | Nominal Size (DxL) (mm) |
|--------------------------------|---|----------------------|-------|--|-------|-------------------------------|
| | | 120 Hz | 20kHz | 120 Hz | 20kHz | |
| 200 Vdc (250 Vdc Surge) | | | | | | |
| 820 | SLP821M200C4P3 | 0.243 | 0.182 | 2.10 | 3.09 | 25 x 45 |
| 820 | SLP821M200E5P3 | 0.243 | 0.182 | 2.04 | 3.00 | 30 x 35 |
| 820 | SLP821M200H3P3 | 0.243 | 0.182 | 2.04 | 3.00 | 35 x 30 |
| 1000 | SLP102M200C9P3 | 0.199 | 0.149 | 2.42 | 3.56 | 25 x 50 |
| 1000 | SLP102M200E7P3 | 0.199 | 0.149 | 2.30 | 3.38 | 30 x 40 |
| 1000 | SLP102M200H5P3 | 0.199 | 0.149 | 2.30 | 3.38 | 35 x 35 |
| 1200 | SLP122M200E4P3 | 0.166 | 0.125 | 2.65 | 3.90 | 30 x 45 |
| 1200 | SLP122M200H5P3 | 0.166 | 0.125 | 2.65 | 3.90 | 35 x 35 |
| 1200 | SLP122M200H3P3 | 0.166 | 0.125 | 2.49 | 3.66 | 35 x 30 |
| 1500 | SLP152M200H7P3 | 0.133 | 0.100 | 3.08 | 4.53 | 35 x 40 |
| 1800 | SLP182M200H4P3 | 0.111 | 0.083 | 3.48 | 5.12 | 35 x 45 |
| 1800 | SLP182M200H7P3 | 0.111 | 0.083 | 3.31 | 4.87 | 35 x 40 |
| 220 Vdc (270 Vdc Surge) | | | | | | |
| 220 | SLP221M220A1P3 | 0.905 | 0.679 | 1.00 | 1.47 | 22 x 25 |
| 270 | SLP271M220A3P3 | 0.737 | 0.553 | 1.15 | 1.69 | 22 x 30 |
| 330 | SLP331M220A5P3 | 0.603 | 0.452 | 1.25 | 1.84 | 22 x 35 |
| 330 | SLP331M220C1P3 | 0.603 | 0.452 | 1.25 | 1.84 | 25 x 25 |
| 390 | SLP391M220A5P3 | 0.510 | 0.383 | 1.40 | 2.06 | 22 x 35 |
| 390 | SLP391M220C3P3 | 0.510 | 0.383 | 1.40 | 2.06 | 25 x 30 |
| 470 | SLP471M220A7P3 | 0.423 | 0.317 | 1.51 | 2.22 | 22 x 40 |
| 470 | SLP471M220C3P3 | 0.423 | 0.317 | 1.44 | 2.12 | 25 x 30 |
| 470 | SLP471M220E1P3 | 0.423 | 0.317 | 1.50 | 2.21 | 30 x 25 |
| 560 | SLP561M220A4P3 | 0.355 | 0.266 | 1.70 | 2.50 | 22 x 45 |
| 560 | SLP561M220C5P3 | 0.355 | 0.266 | 1.64 | 2.41 | 25 x 35 |
| 560 | SLP561M220E3P3 | 0.355 | 0.266 | 1.70 | 2.50 | 30 x 30 |
| 560 | SLP561M220H1P3 | 0.355 | 0.266 | 1.71 | 2.51 | 35 x 25 |
| 680 | SLP681M220C7P3 | 0.293 | 0.220 | 1.84 | 2.70 | 25 x 40 |
| 680 | SLP681M220E5P3 | 0.293 | 0.220 | 1.93 | 2.84 | 30 x 35 |
| 680 | SLP681M220H3P3 | 0.293 | 0.220 | 1.89 | 2.78 | 35 x 30 |
| 820 | SLP821M220C4P3 | 0.243 | 0.182 | 2.08 | 3.06 | 25 x 45 |
| 820 | SLP821M220E7P3 | 0.243 | 0.182 | 2.19 | 3.22 | 30 x 40 |
| 820 | SLP821M220H3P3 | 0.243 | 0.182 | 2.16 | 3.18 | 35 x 30 |
| 1000 | SLP102M220E4P3 | 0.199 | 0.149 | 2.50 | 3.68 | 30 x 45 |
| 1000 | SLP102M220H5P3 | 0.199 | 0.149 | 2.44 | 3.59 | 35 x 35 |
| 1200 | SLP122M220H7P3 | 0.166 | 0.125 | 2.79 | 4.10 | 35 x 40 |
| 1500 | SLP152M220H4P3 | 0.133 | 0.100 | 3.22 | 4.73 | 35 x 45 |
| 250 Vdc (300 Vdc Surge) | | | | | | |
| 180 | SLP181M250A1P3 | 1.106 | 0.830 | 0.88 | 1.29 | 22 x 25 |
| 180 | SLP181M250C1P3 | 1.106 | 0.830 | 0.95 | 1.40 | 25 x 25 |
| 220 | SLP221M250A3P3 | 0.905 | 0.679 | 1.00 | 1.47 | 22 x 30 |
| 220 | SLP221M250C1P3 | 0.905 | 0.679 | 1.08 | 1.59 | 25 x 25 |
| 270 | SLP271M250A5P3 | 0.737 | 0.553 | 1.18 | 1.73 | 22 x 35 |
| 270 | SLP271M250C3P3 | 0.737 | 0.553 | 1.27 | 1.87 | 25 x 30 |

Type SLP 105 °C Snap-In Aluminum Electrolytic

Best Value 105 °C Snap-In Type

Additional Voltages and Sizes available at www.cde.com/catalogs/SLP.pdf

| Cap (µF) | 3000 h @ 105 °C Catalog Part Number | Max 25 °C ESR (Ω) | | Max 105 °C Ripple (A _{rms}) | | Nominal Size (DxL) (mm) |
|--------------------------------|---|----------------------|-------|--|-------|-------------------------------|
| | | 120 Hz | 20kHz | 120 Hz | 20kHz | |
| 250 Vdc (300 Vdc Surge) | | | | | | |
| 330 | SLP331M250A7P3 | 0.603 | 0.452 | 1.30 | 1.91 | 22 x 40 |
| 330 | SLP331M250C3P3 | 0.603 | 0.452 | 1.30 | 1.91 | 25 x 30 |
| 330 | SLP331M250E1P3 | 0.603 | 0.452 | 1.35 | 1.98 | 30 x 25 |
| 330 | SLP331M250A3P3 | 0.603 | 0.452 | 1.15 | 1.69 | 22 x 30 |
| 390 | SLP391M250A4P3 | 0.510 | 0.383 | 1.49 | 2.19 | 22 x 45 |
| 390 | SLP391M250C5P3 | 0.510 | 0.383 | 1.49 | 2.19 | 25 x 35 |
| 390 | SLP391M250E3P3 | 0.510 | 0.383 | 1.49 | 2.19 | 30 x 30 |
| 470 | SLP471M250A9P3 | 0.423 | 0.317 | 1.65 | 2.43 | 22 x 50 |
| 470 | SLP471M250C7P3 | 0.423 | 0.317 | 1.65 | 2.43 | 25 x 40 |
| 470 | SLP471M250E3P3 | 0.423 | 0.317 | 1.65 | 2.43 | 30 x 30 |
| 560 | SLP561M250C4P3 | 0.355 | 0.266 | 1.80 | 2.65 | 25 x 45 |
| 560 | SLP561M250E5P3 | 0.355 | 0.266 | 1.80 | 2.65 | 30 x 35 |
| 680 | SLP681M250C9P3 | 0.293 | 0.220 | 2.03 | 2.98 | 25 x 50 |
| 680 | SLP681M250E7P3 | 0.293 | 0.220 | 2.00 | 2.94 | 30 x 40 |
| 680 | SLP681M250H3P3 | 0.293 | 0.220 | 2.00 | 2.94 | 35 x 30 |
| 820 | SLP821M250E4P3 | 0.243 | 0.182 | 2.30 | 3.38 | 30 x 45 |
| 820 | SLP821M250H5P3 | 0.243 | 0.182 | 2.30 | 3.38 | 35 x 35 |
| 1000 | SLP102M250E9P3 | 0.199 | 0.149 | 2.70 | 3.97 | 30 x 50 |
| 1000 | SLP102M250H7P3 | 0.199 | 0.149 | 2.69 | 3.95 | 35 x 40 |
| 1200 | SLP122M250H4P3 | 0.166 | 0.125 | 3.09 | 4.54 | 35 x 45 |
| 1500 | SLP152M250H9P3 | 0.133 | 0.100 | 3.61 | 5.31 | 35 x 50 |
| 315 Vdc (365 Vdc Surge) | | | | | | |
| 120 | SLP121M315A1P3 | 2.765 | 2.074 | 0.75 | 1.10 | 22 x 25 |
| 150 | SLP151M315A3P3 | 2.212 | 1.659 | 0.82 | 1.21 | 22 x 30 |
| 150 | SLP151M315C1P3 | 2.212 | 1.659 | 0.82 | 1.21 | 25 x 25 |
| 180 | SLP181M315A5P3 | 1.843 | 1.382 | 0.92 | 1.35 | 22 x 35 |
| 180 | SLP181M315C3P3 | 1.843 | 1.382 | 0.93 | 1.37 | 25 x 30 |
| 220 | SLP221M315A7P3 | 1.508 | 1.131 | 1.04 | 1.53 | 22 x 40 |
| 220 | SLP221M315C3P3 | 1.508 | 1.131 | 1.04 | 1.53 | 25 x 30 |
| 220 | SLP221M315E1P3 | 1.508 | 1.131 | 1.04 | 1.53 | 30 x 25 |
| 270 | SLP271M315A4P3 | 1.229 | 0.922 | 1.16 | 1.71 | 22 x 45 |
| 270 | SLP271M315C5P3 | 1.229 | 0.922 | 1.16 | 1.71 | 25 x 35 |
| 270 | SLP271M315E1P3 | 1.229 | 0.922 | 1.16 | 1.71 | 30 x 25 |
| 330 | SLP331M315A9P3 | 1.005 | 0.754 | 1.33 | 1.96 | 22 x 50 |
| 330 | SLP331M315C7P3 | 1.005 | 0.754 | 1.33 | 1.96 | 25 x 40 |
| 330 | SLP331M315E3P3 | 1.005 | 0.754 | 1.33 | 1.96 | 30 x 30 |
| 390 | SLP391M315C4P3 | 0.851 | 0.638 | 1.47 | 2.16 | 25 x 45 |
| 390 | SLP391M315E5P3 | 0.851 | 0.638 | 1.47 | 2.16 | 30 x 35 |
| 390 | SLP391M315H3P3 | 0.851 | 0.638 | 1.47 | 2.16 | 35 x 30 |
| 470 | SLP471M315E7P3 | 0.706 | 0.530 | 1.70 | 2.50 | 30 x 40 |
| 470 | SLP471M315H3P3 | 0.706 | 0.530 | 1.70 | 2.50 | 35 x 30 |
| 560 | SLP561M315E4P3 | 0.592 | 0.444 | 2.05 | 3.01 | 30 x 45 |
| 560 | SLP561M315H5P3 | 0.592 | 0.444 | 2.05 | 3.01 | 35 x 35 |
| 680 | SLP681M315H7P3 | 0.488 | 0.366 | 2.17 | 3.19 | 35 x 40 |

| Cap (µF) | 3000 h @ 105 °C Catalog Part Number | Max 25 °C ESR (Ω) | | Max 105 °C Ripple (A _{rms}) | | Nominal Size (DxL) (mm) |
|--------------------------------|---|----------------------|-------|--|-------|-------------------------------|
| | | 120 Hz | 20kHz | 120 Hz | 20kHz | |
| 820 | SLP821M315H4P3 | 0.405 | 0.304 | 2.20 | 3.23 | 35 x 45 |
| 350 Vdc (400 Vdc Surge) | | | | | | |
| 100 | SLP101M350A1P3 | 3.317 | 2.488 | 0.69 | 1.01 | 22 x 25 |
| 120 | SLP121M350A3P3 | 2.765 | 2.074 | 0.75 | 1.10 | 22 x 30 |
| 120 | SLP121M350C1P3 | 2.765 | 2.074 | 0.75 | 1.10 | 25 x 25 |
| 150 | SLP151M350A5P3 | 2.212 | 1.659 | 0.82 | 1.21 | 22 x 35 |
| 150 | SLP151M350C3P3 | 2.212 | 1.659 | 0.83 | 1.22 | 25 x 30 |
| 180 | SLP181M350A7P3 | 1.843 | 1.382 | 0.92 | 1.35 | 22 x 40 |
| 180 | SLP181M350C3P3 | 1.843 | 1.382 | 0.92 | 1.35 | 25 x 30 |
| 180 | SLP181M350E1P3 | 1.843 | 1.382 | 0.90 | 1.32 | 30 x 25 |
| 220 | SLP221M350A4P3 | 1.508 | 1.131 | 1.05 | 1.54 | 22 x 45 |
| 220 | SLP221M350C5P3 | 1.508 | 1.131 | 1.04 | 1.53 | 25 x 35 |
| 220 | SLP221M350E3P3 | 1.508 | 1.131 | 1.02 | 1.50 | 30 x 30 |
| 270 | SLP271M350A9P3 | 1.229 | 0.922 | 1.16 | 1.71 | 22 x 50 |
| 270 | SLP271M350C7P3 | 1.229 | 0.922 | 1.18 | 1.73 | 25 x 40 |
| 270 | SLP271M350E3P3 | 1.229 | 0.922 | 1.17 | 1.72 | 30 x 30 |
| 330 | SLP331M350C4P3 | 1.005 | 0.754 | 1.29 | 1.90 | 25 x 45 |
| 330 | SLP331M350E5P3 | 1.005 | 0.754 | 1.34 | 1.97 | 30 x 35 |
| 330 | SLP331M350H3P3 | 1.005 | 0.754 | 1.22 | 1.79 | 35 x 30 |
| 390 | SLP391M350C9P3 | 0.851 | 0.638 | 1.51 | 2.22 | 25 x 50 |
| 390 | SLP391M350E7P3 | 0.851 | 0.638 | 1.51 | 2.22 | 30 x 40 |
| 390 | SLP391M350H5P3 | 0.851 | 0.638 | 1.47 | 2.16 | 35 x 35 |
| 470 | SLP471M350E4P3 | 0.706 | 0.530 | 1.65 | 2.43 | 30 x 45 |
| 470 | SLP471M350H5P3 | 0.706 | 0.530 | 1.69 | 2.48 | 35 x 35 |
| 560 | SLP561M350E9P3 | 0.592 | 0.444 | 1.85 | 2.72 | 30 x 50 |
| 560 | SLP561M350H7P3 | 0.592 | 0.444 | 1.90 | 2.79 | 35 x 40 |
| 680 | SLP681M350H4P3 | 0.488 | 0.366 | 2.20 | 3.23 | 35 x 45 |
| 385 Vdc (435 Vdc Surge) | | | | | | |
| 68 | SLP680M385A1P3 | 4.879 | 3.659 | 0.45 | 0.66 | 22 x 25 |
| 82 | SLP820M385A3P3 | 4.046 | 3.035 | 0.52 | 0.76 | 22 x 30 |
| 100 | SLP101M385A3P3 | 3.317 | 2.488 | 0.58 | 0.85 | 22 x 30 |
| 120 | SLP121M385A5P3 | 2.765 | 2.074 | 0.68 | 1.00 | 22 x 35 |
| 150 | SLP151M385A7P3 | 2.212 | 1.659 | 0.79 | 1.16 | 22 x 40 |
| 150 | SLP151M385E1P3 | 2.212 | 1.659 | 0.75 | 1.10 | 30 x 25 |
| 180 | SLP181M385A4P3 | 1.843 | 1.382 | 0.94 | 1.38 | 25 x 45 |
| 180 | SLP181M385E3P3 | 1.843 | 1.382 | 0.88 | 1.29 | 30 x 30 |
| 220 | SLP221M385E3P3 | 1.508 | 1.131 | 1.00 | 1.47 | 30 x 30 |
| 270 | SLP271M385E7P3 | 1.229 | 0.922 | 1.14 | 1.68 | 30 x 40 |
| 270 | SLP271M385H3P3 | 1.229 | 0.922 | 1.10 | 1.62 | 35 x 30 |
| 330 | SLP331M385E4P3 | 1.005 | 0.754 | 1.31 | 1.93 | 30 x 45 |
| 330 | SLP331M385H5P3 | 1.005 | 0.754 | 1.32 | 1.94 | 35 x 35 |
| 390 | SLP391M385E9P3 | 0.851 | 0.638 | 1.48 | 2.18 | 30 x 50 |
| 390 | SLP391M385H7P3 | 0.851 | 0.638 | 1.48 | 2.18 | 35 x 40 |
| 470 | SLP471M385H4P3 | 0.706 | 0.530 | 1.76 | 2.59 | 35 x 45 |
| 560 | SLP561M385H9P3 | 0.592 | 0.444 | 1.95 | 2.87 | 35 x 50 |

Type SLP 105 °C Snap-In Aluminum Electrolytic

Best Value 105 °C Snap-In Type

| Cap (µF) | 3000 h @ 105 °C Catalog Part Number | Max 25 °C ESR (Ω) | | Max 105 °C Ripple (A _{rms}) | | Nominal Size (DxL) (mm) |
|--------------------------------|---|----------------------|-------|--|-------|-------------------------------|
| | | 120 Hz | 20kHz | 120 Hz | 20kHz | |
| 400 Vdc (450 Vdc Surge) | | | | | | |
| 47 | SLP470M400A1P3 | 7.058 | 5.294 | 0.42 | 0.62 | 22 x 25 |
| 68 | SLP680M400A1P3 | 4.879 | 3.659 | 0.50 | 0.74 | 22 x 25 |
| 82 | SLP820M400A1P3 | 4.046 | 3.035 | 0.64 | 0.94 | 22 x 25 |
| 100 | SLP101M400A3P3 | 3.317 | 2.488 | 0.70 | 1.03 | 22 x 30 |
| 100 | SLP101M400C1P3 | 3.317 | 2.488 | 0.70 | 1.03 | 25 x 25 |
| 120 | SLP121M400A5P3 | 2.765 | 2.074 | 0.75 | 1.10 | 22 x 35 |
| 120 | SLP121M400C3P3 | 2.765 | 2.074 | 0.75 | 1.10 | 25 x 30 |
| 150 | SLP151M400A7P3 | 2.212 | 1.659 | 0.88 | 1.29 | 22 x 40 |
| 150 | SLP151M400C5P3 | 2.212 | 1.659 | 0.89 | 1.31 | 25 x 35 |
| 150 | SLP151M400E1P3 | 2.212 | 1.659 | 0.88 | 1.29 | 30 x 25 |
| 150 | SLP151M400C3P3 | 2.212 | 1.659 | 0.83 | 1.22 | 25 x 30 |
| 180 | SLP181M400A4P3 | 1.843 | 1.382 | 0.98 | 1.44 | 22 x 45 |
| 180 | SLP181M400E3P3 | 1.843 | 1.382 | 0.98 | 1.44 | 30 x 30 |
| 220 | SLP221M400A9P3 | 1.508 | 1.131 | 1.10 | 1.62 | 22 x 50 |
| 220 | SLP221M400C5P3 | 1.508 | 1.131 | 1.04 | 1.53 | 25 x 35 |
| 220 | SLP221M400C7P3 | 1.508 | 1.131 | 1.10 | 1.62 | 25 x 40 |
| 220 | SLP221M400E3P3 | 1.508 | 1.131 | 1.10 | 1.62 | 30 x 30 |
| 220 | SLP221M400E5P3 | 1.508 | 1.131 | 1.28 | 1.88 | 35 x 35 |
| 270 | SLP271M400C9P3 | 1.229 | 0.922 | 1.29 | 1.90 | 25 x 50 |
| 270 | SLP271M400E5P3 | 1.229 | 0.922 | 1.22 | 1.79 | 30 x 35 |
| 270 | SLP271M400H3P3 | 1.229 | 0.922 | 1.22 | 1.79 | 35 x 30 |
| 330 | SLP331M400E4P3 | 1.005 | 0.754 | 1.55 | 2.28 | 30 x 45 |
| 330 | SLP331M400H3P3 | 1.005 | 0.754 | 1.44 | 2.12 | 35 x 30 |
| 330 | SLP331M400E5P3 | 1.005 | 0.754 | 1.39 | 2.04 | 30 x 35 |
| 390 | SLP391M400E4P3 | 0.851 | 0.638 | 1.60 | 2.35 | 30 x 45 |
| 390 | SLP391M400H5P3 | 0.851 | 0.638 | 1.60 | 2.35 | 35 x 35 |
| 470 | SLP471M400H7P3 | 0.706 | 0.530 | 1.90 | 2.79 | 35 x 40 |
| 560 | SLP561M400H4P3 | 0.592 | 0.444 | 2.12 | 3.12 | 35 x 45 |
| 680 | SLP681M400H4P3 | 0.488 | 0.366 | 2.34 | 3.44 | 35 x 45 |
| 420 Vdc (470 Vdc Surge) | | | | | | |
| 68 | SLP680M420A1P3 | 4.879 | 3.659 | 0.55 | 0.81 | 22 x 25 |
| 82 | SLP820M420A1P3 | 4.046 | 3.035 | 0.64 | 0.94 | 22 x 25 |
| 82 | SLP820M420C1P3 | 4.046 | 3.035 | 0.58 | 0.85 | 25 x 25 |
| 100 | SLP101M420A3P3 | 3.317 | 2.488 | 0.70 | 1.03 | 22 x 30 |
| 100 | SLP101M420C1P3 | 3.317 | 2.488 | 0.70 | 1.03 | 25 x 25 |
| 120 | SLP121M420A5P3 | 2.765 | 2.074 | 0.75 | 1.10 | 22 x 35 |
| 120 | SLP121M420C3P3 | 2.765 | 2.074 | 0.75 | 1.10 | 25 x 30 |
| 120 | SLP121M420E1P3 | 2.765 | 2.074 | 0.78 | 1.15 | 30 x 25 |
| 150 | SLP151M420A7P3 | 2.212 | 1.659 | 0.88 | 1.29 | 22 x 40 |
| 150 | SLP151M420C5P3 | 2.212 | 1.659 | 0.88 | 1.29 | 25 x 35 |
| 150 | SLP151M420E1P3 | 2.212 | 1.659 | 0.88 | 1.29 | 30 x 25 |
| 180 | SLP181M420A4P3 | 1.843 | 1.382 | 0.95 | 1.40 | 22 x 45 |
| 180 | SLP181M420C7P3 | 1.843 | 1.382 | 0.97 | 1.43 | 25 x 40 |
| 180 | SLP181M420E3P3 | 1.843 | 1.382 | 0.96 | 1.41 | 30 x 30 |
| 180 | SLP181M420H1P3 | 1.843 | 1.382 | 0.94 | 1.38 | 35 x 25 |

Additional Voltages and Sizes available at www.cde.com/catalogs/SLP.pdf

| Cap (µF) | 3000 h @ 105 °C Catalog Part Number | Max 25 °C ESR (Ω) | | Max 105 °C Ripple (A _{rms}) | | Nominal Size (DxL) (mm) |
|--------------------------------|---|----------------------|-------|--|-------|-------------------------------|
| | | 120 Hz | 20kHz | 120 Hz | 20kHz | |
| 420 Vdc (470 Vdc Surge) | | | | | | |
| 220 | SLP221M420C4P3 | 1.508 | 1.131 | 1.13 | 1.66 | 25 x 45 |
| 220 | SLP221M420E5P3 | 1.508 | 1.131 | 1.10 | 1.62 | 30 x 35 |
| 220 | SLP221M420H1P3 | 1.508 | 1.131 | 1.10 | 1.62 | 35 x 25 |
| 270 | SLP271M420C9P3 | 1.229 | 0.922 | 1.37 | 2.01 | 25 x 50 |
| 270 | SLP271M420E7P3 | 1.229 | 0.922 | 1.25 | 1.84 | 30 x 40 |
| 270 | SLP271M420H3P3 | 1.229 | 0.922 | 1.22 | 1.79 | 35 x 30 |
| 330 | SLP331M420E4P3 | 1.005 | 0.754 | 1.49 | 2.19 | 30 x 45 |
| 330 | SLP331M420H5P3 | 1.005 | 0.754 | 1.45 | 2.13 | 35 x 35 |
| 390 | SLP391M420E9P3 | 0.851 | 0.638 | 1.67 | 2.45 | 30 x 50 |
| 390 | SLP391M420H7P3 | 0.851 | 0.638 | 1.66 | 2.44 | 35 x 40 |
| 470 | SLP471M420H4P3 | 0.706 | 0.530 | 1.90 | 2.79 | 35 x 45 |
| 450 Vdc (500 Vdc Surge) | | | | | | |
| 47 | SLP470M450A1P3 | 7.060 | 5.295 | 0.40 | 0.59 | 22 x 25 |
| 56 | SLP560M450A1P3 | 5.924 | 4.443 | 0.50 | 0.74 | 22 x 25 |
| 68 | SLP680M450A3P3 | 4.879 | 3.659 | 0.53 | 0.78 | 22 x 30 |
| 68 | SLP680M450C1P3 | 4.879 | 3.659 | 0.53 | 0.78 | 25 x 25 |
| 82 | SLP820M450A3P3 | 4.046 | 3.035 | 0.64 | 0.94 | 22 x 30 |
| 82 | SLP820M450C1P3 | 4.046 | 3.035 | 0.64 | 0.94 | 25 x 25 |
| 100 | SLP101M450A5P3 | 3.317 | 2.488 | 0.69 | 1.01 | 22 x 35 |
| 100 | SLP101M450C3P3 | 3.317 | 2.488 | 0.69 | 1.01 | 25 x 30 |
| 100 | SLP101M450E1P3 | 3.317 | 2.488 | 0.72 | 1.06 | 30 x 25 |
| 100 | SLP101M450C7P3 | 3.317 | 2.488 | 0.78 | 1.15 | 25 x 40 |
| 100 | SLP101M450A3P3 | 3.317 | 2.488 | 0.65 | 0.96 | 22 x 30 |
| 120 | SLP121M450A7P3 | 2.765 | 2.074 | 0.80 | 1.18 | 22 x 40 |
| 120 | SLP121M450C3P3 | 2.765 | 2.074 | 0.80 | 1.18 | 25 x 30 |
| 120 | SLP121M450E1P3 | 2.765 | 2.074 | 0.80 | 1.18 | 30 x 25 |
| 150 | SLP151M450A4P3 | 2.212 | 1.659 | 0.88 | 1.29 | 22 x 45 |
| 150 | SLP151M450C5P3 | 2.212 | 1.659 | 0.88 | 1.29 | 25 x 35 |
| 150 | SLP151M450E3P3 | 2.212 | 1.659 | 0.88 | 1.29 | 30 x 30 |
| 150 | SLP151M450C3P3 | 2.121 | 1.591 | 0.82 | 1.21 | 25 x 30 |
| 180 | SLP181M450C7P3 | 1.843 | 1.382 | 1.00 | 1.47 | 25 x 40 |
| 180 | SLP181M450E3P3 | 1.843 | 1.382 | 1.00 | 1.47 | 30 x 30 |
| 220 | SLP221M450C4P3 | 1.508 | 1.131 | 1.12 | 1.65 | 25 x 45 |
| 220 | SLP221M450E5P3 | 1.508 | 1.131 | 1.12 | 1.65 | 30 x 35 |
| 220 | SLP221M450H3P3 | 1.508 | 1.131 | 1.12 | 1.65 | 35 x 30 |
| 220 | SLP221M450E3P3 | 1.508 | 1.131 | 1.05 | 1.54 | 30 x 30 |
| 270 | SLP271M450E7P3 | 1.229 | 0.922 | 1.28 | 1.88 | 30 x 40 |
| 270 | SLP271M450H5P3 | 1.229 | 0.922 | 1.28 | 1.88 | 35 x 35 |
| 330 | SLP331M450E9P3 | 1.005 | 0.754 | 1.45 | 2.13 | 30 x 50 |
| 330 | SLP331M450H5P3 | 1.005 | 0.754 | 1.37 | 2.01 | 35 x 35 |
| 330 | SLP331M450H7P3 | 1.005 | 0.754 | 1.45 | 2.13 | 35 x 40 |
| 390 | SLP391M450H7P3 | 0.851 | 0.638 | 1.55 | 2.28 | 35 x 40 |
| 470 | SLP471M450H4P3 | 0.706 | 0.530 | 1.77 | 2.60 | 35 x 45 |
| 470 | SLP471M450H9P3 | 0.706 | 0.530 | 1.85 | 2.72 | 35 x 50 |
| 560 | SLP561M450H9P3 | 0.590 | 0.443 | 2.00 | 2.94 | 35 x 50 |

Type SLP 105 °C Snap-In Aluminum Electrolytic

Best Value 105 °C Snap-In Type

Typical Performance Curves





Компания «ЭлектроПласт» предлагает заключение долгосрочных отношений при поставках импортных электронных компонентов на взаимовыгодных условиях!

Наши преимущества:

- Оперативные поставки широкого спектра электронных компонентов отечественного и импортного производства напрямую от производителей и с крупнейших мировых складов;
- Поставка более 17-ти миллионов наименований электронных компонентов;
- Поставка сложных, дефицитных, либо снятых с производства позиций;
- Оперативные сроки поставки под заказ (от 5 рабочих дней);
- Экспресс доставка в любую точку России;
- Техническая поддержка проекта, помощь в подборе аналогов, поставка прототипов;
- Система менеджмента качества сертифицирована по Международному стандарту ISO 9001;
- Лицензия ФСБ на осуществление работ с использованием сведений, составляющих государственную тайну;
- Поставка специализированных компонентов (Xilinx, Altera, Analog Devices, Intersil, Interpoint, Microsemi, Aeroflex, Peregrine, Syfer, Eurofarad, Texas Instrument, Miteq, Cobham, E2V, MA-COM, Hittite, Mini-Circuits, General Dynamics и др.);

Помимо этого, одним из направлений компании «ЭлектроПласт» является направление «Источники питания». Мы предлагаем Вам помощь Конструкторского отдела:

- Подбор оптимального решения, техническое обоснование при выборе компонента;
- Подбор аналогов;
- Консультации по применению компонента;
- Поставка образцов и прототипов;
- Техническая поддержка проекта;
- Защита от снятия компонента с производства.



Как с нами связаться

Телефон: 8 (812) 309 58 32 (многоканальный)

Факс: 8 (812) 320-02-42

Электронная почта: org@eplast1.ru

Адрес: 198099, г. Санкт-Петербург, ул. Калинина, дом 2, корпус 4, литера А.