

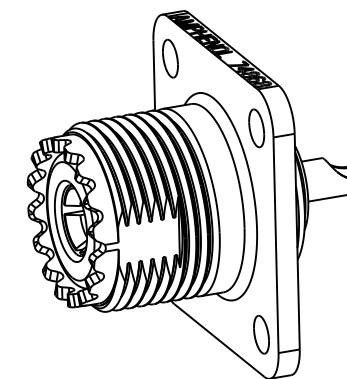
NOTES:

1. PLATING PER AMPHENOL SPEC. 349-50560.
2. THIS ITEM SHALL BE ASSEMBLED IN SUCH A MANNER AS TO MEET REQUIREMENTS 1,2 & 3 OF DWG. 123-183.
3. RING STAKE CONTACT WITHOUT FRACTURING AS SHOWN. DO NOT CHIP OR CRACK ITEM 1. DO NOT BREAK THRU PLATING.
4. AFTER ASSY. CONTACT MUST MEET THE FOLLOWING REQUIREMENTS  
 AFTER FIVE INSERTIONS OF A  $\varnothing 0.1585 \pm .0001$  STEEL PIN FOR A .125 MIN. DEPTH. CONTACT MUST WITHDRAW FROM A  $\varnothing 0.1560 \pm .0001$  STEEL PIN WITH A FORCE OF 9 OZS. MIN. & 3 1/4 LBS MAX.
5. PACKAGING:  
 A. PACKAGE CONNECTOR AS PER ROUTING INSTRUCTIONS.  
 B. MARK BAG OR TAG "AMPHENOL RF, 83-IR-4050 YYWW"  
 C. NO ITEMS ARE PACKAGED LOOSE.

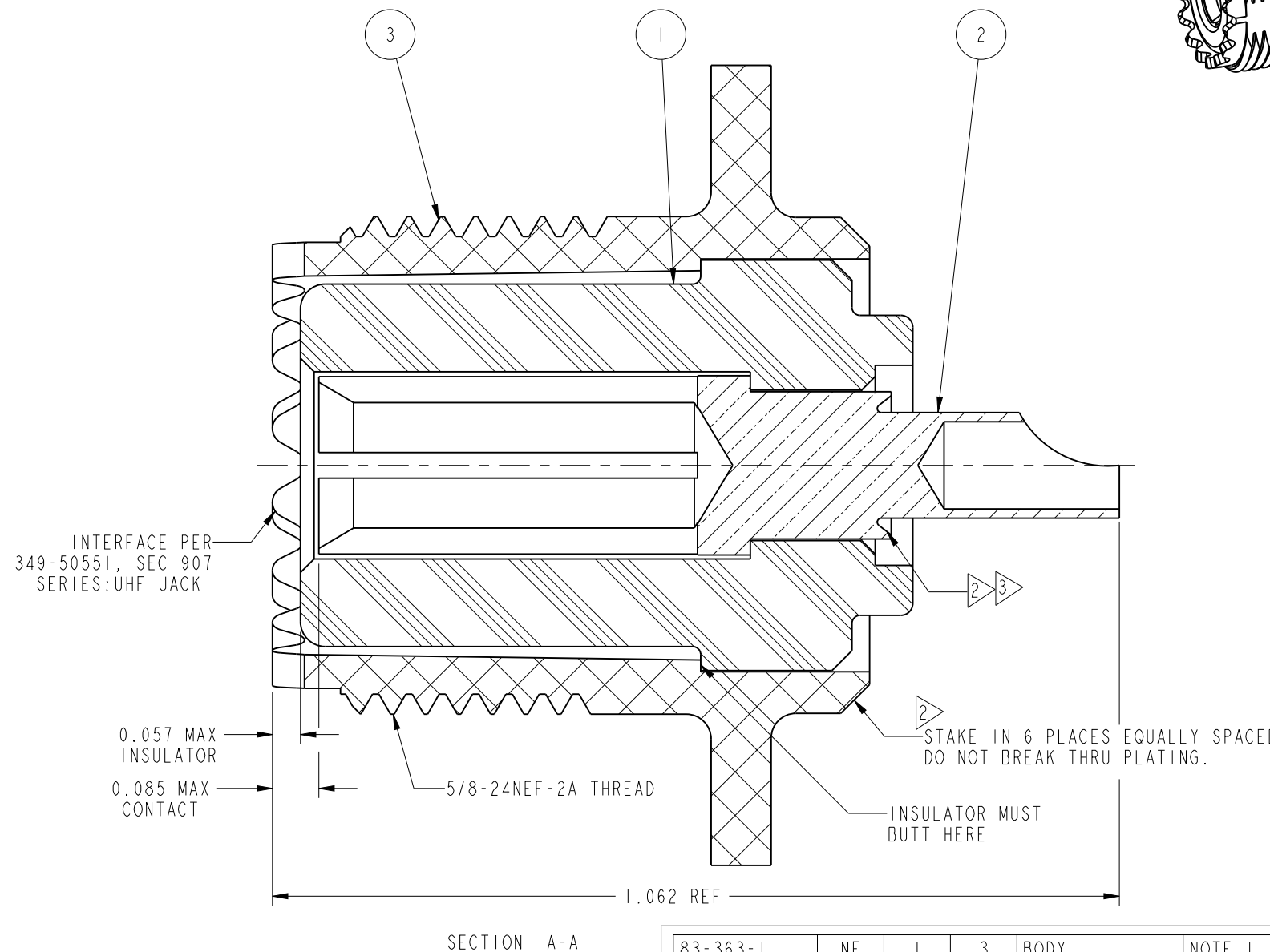
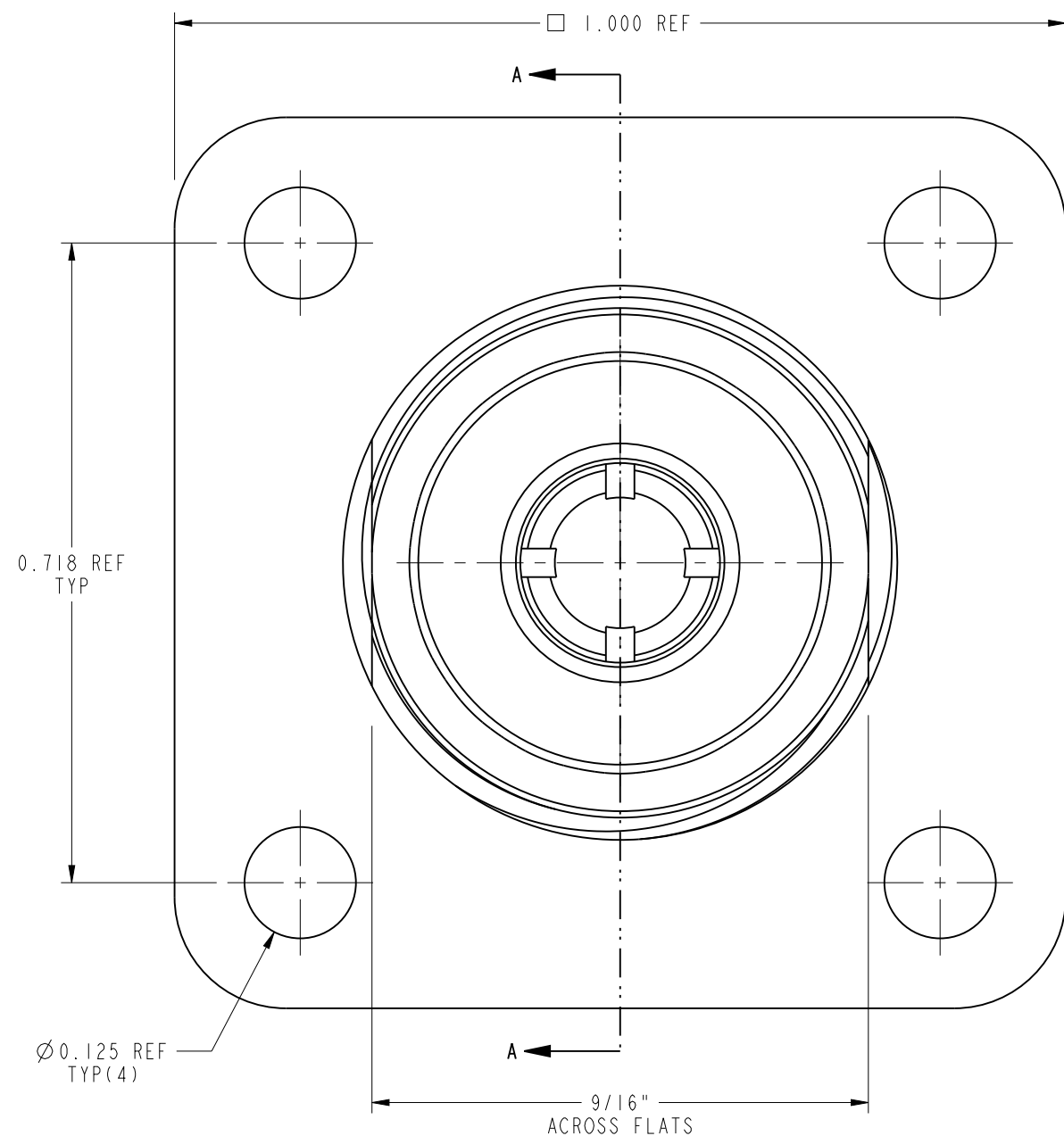
THIRD ANGLE PROJ.

REVISIONS

REV	DESCRIPTION	DATE	ECO	APPR
A	RELEASE TO MFG.	29-Jul-81	28067	ABR
E	REDRAWN IN PRO-E & COD SHEET ADDED	--	50467	AAP



SCALE 1.600



PART NUMBER	PLTG	QTY.	ITEM	DESCRIPTION	FINISH	MATERIAL
83-363-1	NE	1	3	BODY	NOTE 1	ZINC ALLOY
83-538	SA	1	2	CONTACT	NOTE 1	BRASS
83-539		1	1	INSULATOR	YELLOW	PBT

**PRELIMINARY ISSUE**

UNLESS OTHERWISE SPECIFIED, DIMENSIONS ARE IN INCHES AND TOLERANCES ARE:  
 2 PLACE DECIMAL 3 PLACE DECIMAL ANGLES  
 $\pm .015$  (0,381 mm)  $\pm .005$  (0,127 mm)  $\pm 1^\circ$

NOTICE - These drawings, specifications, or other data (1) are, and remain the property of Amphenol corp. (2) must be returned upon request; and (3) are confidential and not to be disclosed to any person other than those to whom they are given by Amphenol Corp. the furnishing of these drawings, specifications, or other data by Amphenol Corp., or to any other person to anyone for any purpose is not to be regarded by implication or otherwise in any manner licensing, granting rights to permitting such holder or any other person to manufacture, use or sell any product, process or design, patented or otherwise, that may in any way be related to or disclosed by said drawings, specifications, or other data.

MATERIAL SEE BOM TABLE	DRAWN A ARUN PRABU	DATE 02-Apr-15	TITLE UHF STR JACK RECEPTACLE SPECIAL NICKEL PLATED		Amphenol RF www.amphenolrf.com	
REFERENCE RADIO SHACK EAR 112-1540-947880-51	ENGINEER D.ROYCE	DATE 02-Oct-96				
CONFIGURATION LEVEL: In Work	APPROVED	DATE	SCALE: 5.2:1.0	SHEET 1 OF 2	DRAWING NO.83-IR-4050	
FINISH	CAD FILE		DWG SIZE B	REV E	ITEM NO.83-IR-4050	
					PART NO.83-IR-4050	

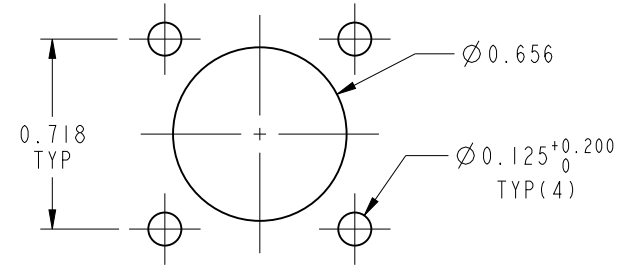
NOTES:

1. MATERIALS AND FINISHES:  
 BODY - ZINC DIE CAST, NICKEL PLATING  
 CONTACT - BRASS, SILVER PLATING  
 INSULATOR - PBT, YELLOW
2. ELECTRICAL:  
 A. FREQUENCY RANGE: DC - 0.3 GHz
3. MECHANICAL:  
 A. DURABILITY: 500 CYCLES MIN.  
 B. TEMPERATURE RANGE: -65° C TO +165° C
4. PACKAGING:  
 A. QUANTITY: SINGLE PACK  
 B. MARKING: BAG TO BE MARKED  
 "AMPHENOL RF, 83-1R-4050, AND DATE CODE"

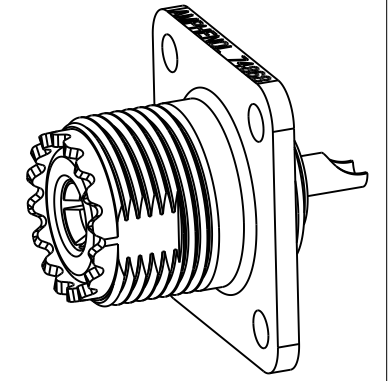
THIRD ANGLE PROJ.

REVISIONS

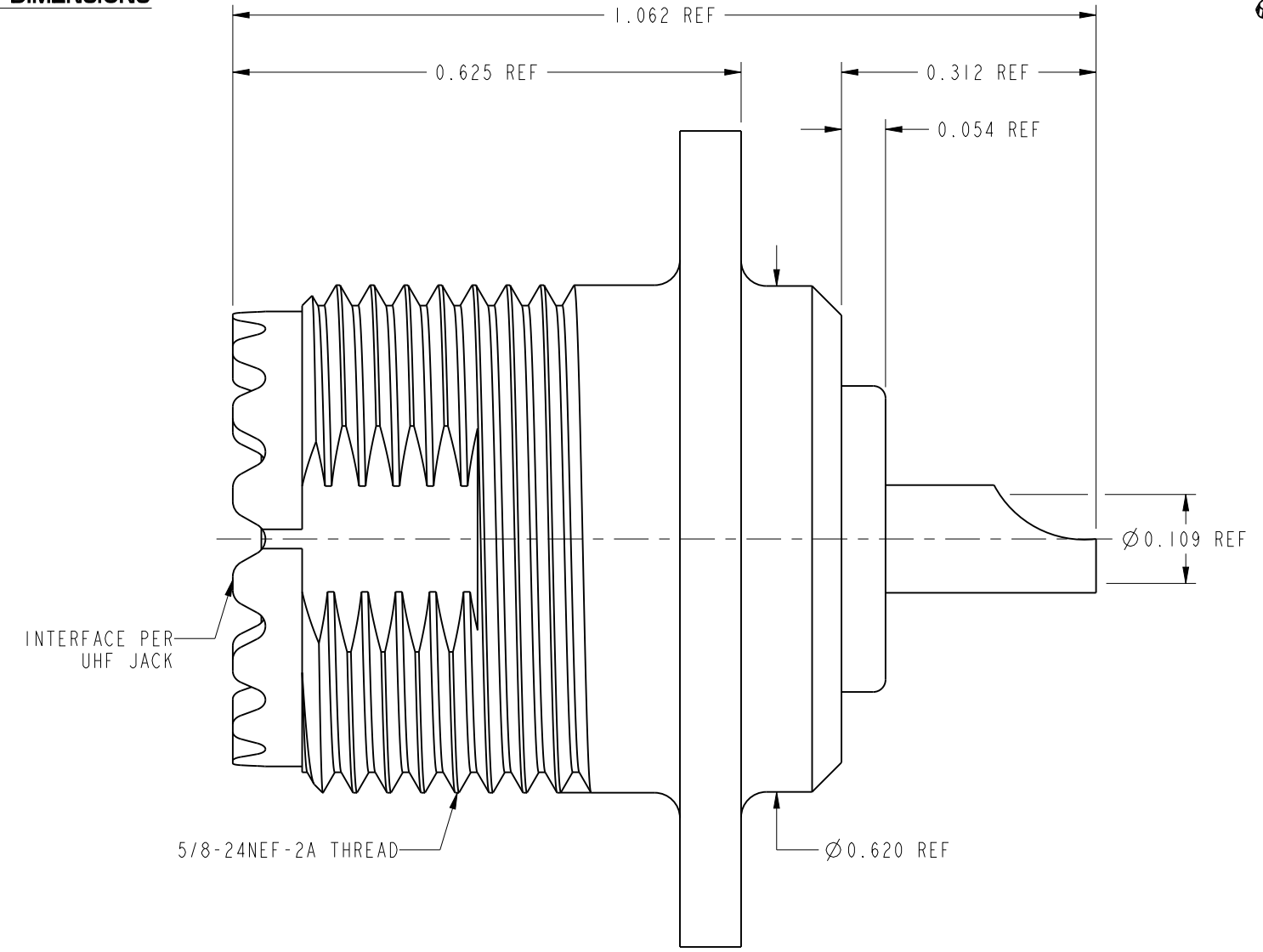
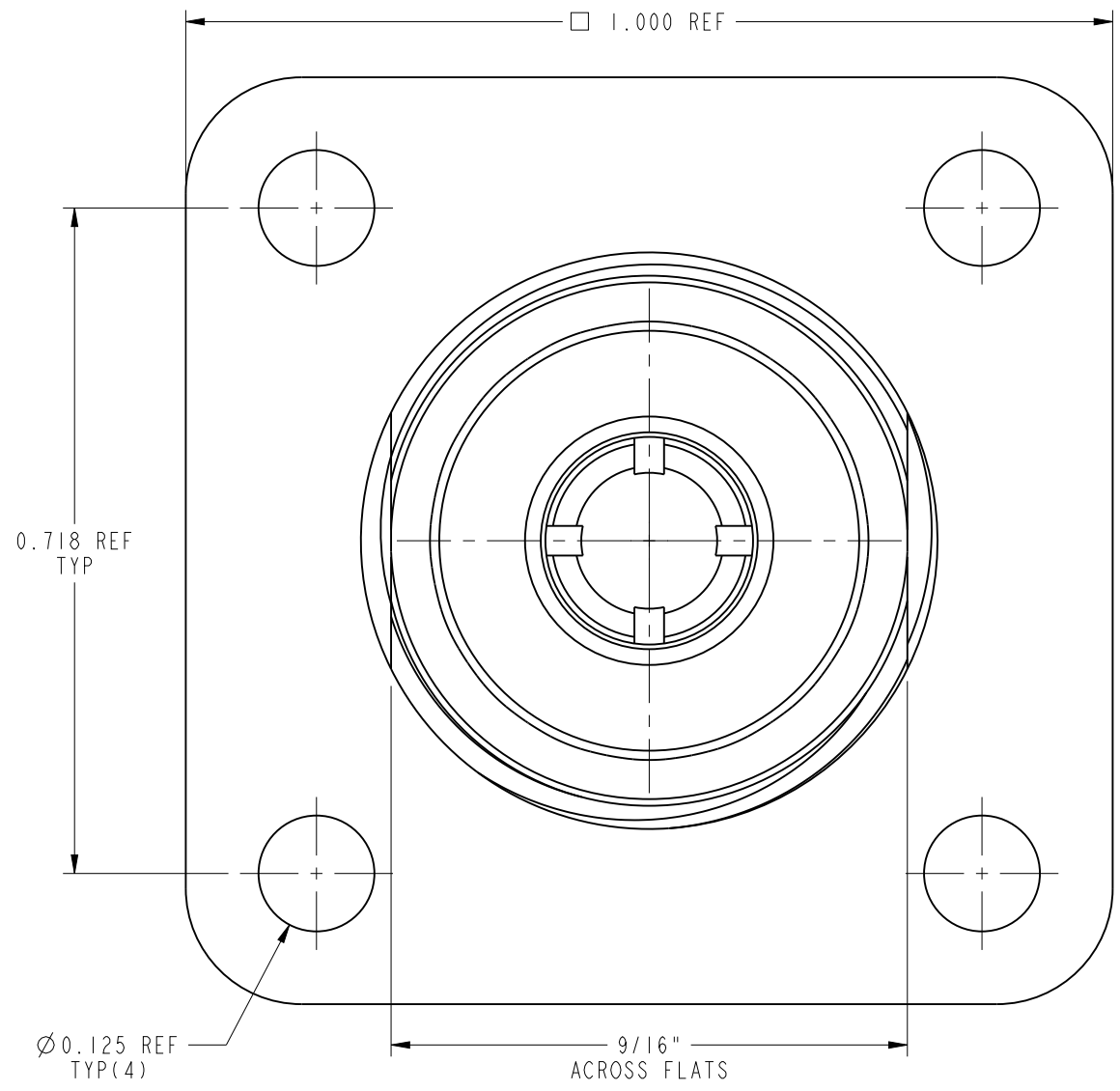
REV	DESCRIPTION	DATE	ECO	APPR
--	RELEASE TO MFG.	--	--	--
E	REDRAWN IN PRO-E & COD SHEET ADDED	--	50467	AAP



**RECOMMENDED MOUNTING HOLE DIMENSIONS**



SCALE 1.600



**PRELIMINARY ISSUE**

**CUSTOMER OUTLINE DRAWING**

ALL OTHER SHEETS ARE FOR INTERNAL USE ONLY

UNLESS OTHERWISE SPECIFIED, DIMENSIONS ARE IN INCHES AND TOLERANCES ARE: 2 PLACE DECIMAL 3 PLACE DECIMAL ANGLES ±.015 (0,381 mm) ±.005 (0,127 mm) ± 1°	MATERIAL	DRAWN	DATE	TITLE UHF STR JACK RECEPTACLE SPECIAL NICKEL PLATED		Amphenol RF www.amphenolrf.com	
	SEE NOTES	A ARUN PRABU	02-Apr-15				
NOTICE - These drawings, specifications, or other data (1) are, and remain the property of Amphenol corp. (2) must be returned upon request; and (3) are confidential and not to be disclosed to any person other than those to whom they are given by Amphenol Corp. the furnishing of these drawings, specifications, or other data by Amphenol Corp., or to any other person to anyone for any purpose is not to be regarded by implication or otherwise in any manner licensing, granting rights to permitting such holder or any other person to manufacture, use or sell any product, process or design, patented or otherwise, that may in any way be related to or disclosed by said drawings, specifications, or other data.	REFERENCE	ENGINEER	DATE	SCALE: 5.0:1.0 SHEET 2 OF 2		DRAWING NO.83-1R-4050 ITEM NO.83-1R-4050	
	RADIO SHACK EAR 112-1540-947880-51	D.ROYCE	02-Oct-96				
	CONFIGURATION LEVEL: In Work	APPROVED	CAD FILE	DATE	DWG SIZE	REV	PART NO.83-1R-4050
FINISH		B	E				



Компания «ЭлектроПласт» предлагает заключение долгосрочных отношений при поставках импортных электронных компонентов на взаимовыгодных условиях!

Наши преимущества:

- Оперативные поставки широкого спектра электронных компонентов отечественного и импортного производства напрямую от производителей и с крупнейших мировых складов;
- Поставка более 17-ти миллионов наименований электронных компонентов;
- Поставка сложных, дефицитных, либо снятых с производства позиций;
- Оперативные сроки поставки под заказ (от 5 рабочих дней);
- Экспресс доставка в любую точку России;
- Техническая поддержка проекта, помощь в подборе аналогов, поставка прототипов;
- Система менеджмента качества сертифицирована по Международному стандарту ISO 9001;
- Лицензия ФСБ на осуществление работ с использованием сведений, составляющих государственную тайну;
- Поставка специализированных компонентов (Xilinx, Altera, Analog Devices, Intersil, Interpoint, Microsemi, Aeroflex, Peregrine, Syfer, Eurofarad, Texas Instrument, Miteq, Cobham, E2V, MA-COM, Hittite, Mini-Circuits, General Dynamics и др.);

Помимо этого, одним из направлений компании «ЭлектроПласт» является направление «Источники питания». Мы предлагаем Вам помощь Конструкторского отдела:

- Подбор оптимального решения, техническое обоснование при выборе компонента;
- Подбор аналогов;
- Консультации по применению компонента;
- Поставка образцов и прототипов;
- Техническая поддержка проекта;
- Защита от снятия компонента с производства.



#### Как с нами связаться

**Телефон:** 8 (812) 309 58 32 (многоканальный)

**Факс:** 8 (812) 320-02-42

**Электронная почта:** [org@eplast1.ru](mailto:org@eplast1.ru)

**Адрес:** 198099, г. Санкт-Петербург, ул. Калинина, дом 2, корпус 4, литера А.