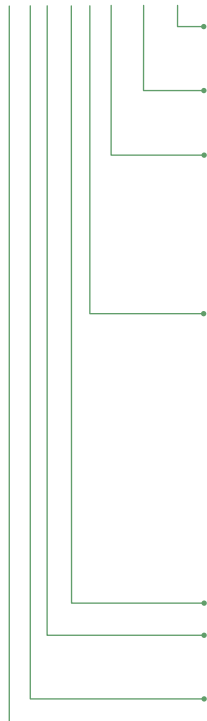


Part Number Guide

Neutrik® Part Number Guide

NC3FAH1-0-X



| | | | |
|----------------------------|-----------------------------|--|--------|
| Shell: | B | Black shell, gold contacts | |
| | BAG | Black shell, silver contacts | |
| Retention: | w/o | Latch Lock | |
| | -0 | Retention Spring | |
| Grounding: | 0 | Separate ground contact connected to shell, male only | |
| | 1 | Pin 1 & Panel & Shell connected, no separate ground contact | |
| | 2 | Separate ground contact connected to shell & panel, separate Pin 1 | |
| | E | Additional ground contacts | |
| | w/o number | No ground / Shell contact (except 4 / 5 pole), female only | |
| Termination: | H | Horizontal PCB mount | |
| | HL | Lateral left PCB mount | |
| | HR | Lateral right PCB mount | |
| | L | Solder Cups | |
| | V | Vertical PCB mount | |
| | Y | IDC for wires (no ground) | |
| | M3 | Mounting holes with M3 thread | |
| | M25 | Mounting holes with M2.5 thread | |
| | - | Not applicable | |
| | Series: | A, AA, B, BA, D, DL, DLX, MPR, P, X, XX | |
| | Gender: | F | Female |
| M | | Male | |
| Number of Contacts: | 3, 4, 5, 6, 7, 8, 12 | | |
| Connector Type: | A | Adapter | |
| | AC | PowerCon® | |
| | B | BNC | |
| | C | Connector | |
| | E | RJ45 | |
| | F | RCA / CINCH | |
| | J (MJ, RJ, SJ) | Jack | |
| | K | Cable Assemblies | |
| | L | Loudspeaker | |
| | M | Modules | |
| | O | Fiber Connector | |
| | P | Plugs | |
| | PP | Patch Panel | |
| | R | Circular Connector | |
| T | Transformer | | |

XLR Connectors



Content

Page

| | | | |
|----------------------------|----|--|----|
| Cable Connectors: | | Receptacles: | |
| XX Series | 9 | A Series | 15 |
| EMC-XLR Series | 9 | AA Series | 15 |
| RX Series | 10 | B Series | 16 |
| XX-HE | 10 | BA Series | 16 |
| X Series | 11 | A/B Series 5 pole switch | 17 |
| X-HD Series | 11 | D Series | 17 |
| XCC Series | 12 | DL Series | 18 |
| FXS Series | 12 | DLX Series | 18 |
| FX-SPEC Series | 12 | EMC | 19 |
| Technical Data | 13 | MPR-HD Series | 19 |
| Ordering Information | 14 | P Series | 20 |
| | | Combo | 20 |
| | | Accessories | 21 |
| | | Technical Data | 22 |
| | | Ordering Information A/AA Series | 23 |
| | | Ordering Information B/BA Series | 24 |
| | | Ordering Information D/DL/P/Combo Series | 25 |
| | | Panel Cutouts, Assembly Tools | 26 |

Introduction

The XLR connector series is probably together with the Speakon® series Neutrik's most known product range and has due to the simple but striking concept been one of the most important keys to our great success.

We introduced the first XLR version more than 25 years ago, meanwhile it became the worldwide accepted standard.

XLR connectors are widely used in various applications of the professional audio world. Whether as microphone connector, on lighting applications or any kind of sound equipment, the XLR is all over the entertainment industry.

Keyfeatures are:

- Reliable and robust
- Easy to assemble, simple to use
- Excellent cable protection and retention
- Colour coding
- Available in 3 to 7 pole

The reason for the outstanding success of the series is in accompany with these features a constant and peerless quality.

Q u a l i t y T h i n k i n g

XLR Cable Connectors



XX Series

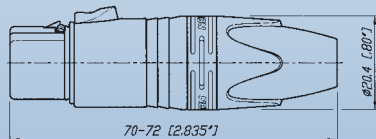


NC3FXX

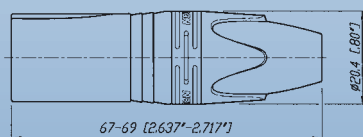
NC3MXX-B

- The next generation of the worldwide accepted standard
- Unique cage type female contact - increases conductivity
- Female contact with "solder stop" for ease soldering
- Male connector without locking "window" - more stringent housing, increases durability
- Improved chuck type strain relief - increases retention force and makes assembly easier and faster
- New ground contact - excellent contact integrity between chassis and cable connector
- Customized branding using translucent ring
- Sleek and ergonomic design - valuable and handy

NC*FXX



NC*MXX



* ... 3 - 7 contacts



EMC-XLR Series



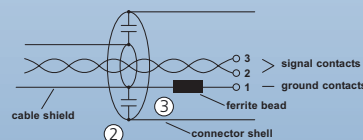
NC3FXX-EMC

NC3MXX-EMC

- 3-pole male / female XLR cable connector with integrated capacitive shield to shell connection to avoid RF-interference and LF-noise
- 360° shield contact on female connector ensures best possible shielding and chassis contact
- Patent pending



- ① Design guarantees a continuous RF-shield connection but avoids ground loops (no LF-shield connection)
- ② Circular capacitor enables low-inductive shield connection to connector housing
- ③ Cable shield - PIN 1 connection includes EMI suppression bead (blocks high frequencies)



- Quality Design

XLR Cable Connectors



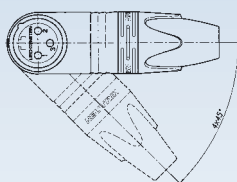
RX Series

XX-HE Series

NEW



NC3FRX



Outlet position

NEW



NC3FXX-HE

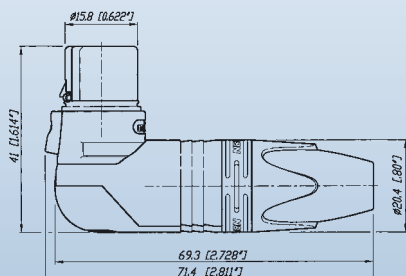


NC3MXX-HE

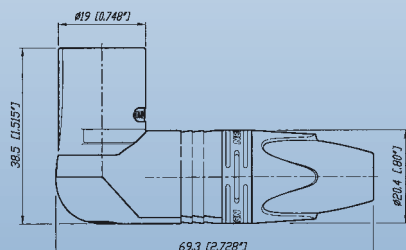
- Right angle version of the XX Series - only 20 mm wide
- Extra slim right-angle connector
- Neutrik chuck type strain relief
- 5 selectable cable outlet positions

- Exclusive version of standard XX Series
- Valuable velour chromium plating
- Extra high temperature resistant insulator material
- Machined female contacts

NC*FRX



NC*MRX



NC3FXX-HE



NC3MXX-HE

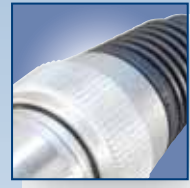
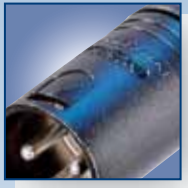


* ... 3 - 7 contacts

Look for the Logo



XLR Cable Connectors



X Series

X-HD Series



NC3FX




NC3MX



NC5FX-HD



NC4MX-HD

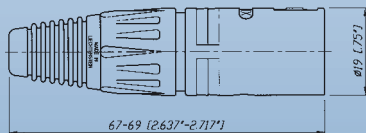
- The worldwide accepted XLR connector standard
- Rugged diecast shell
- Compact design (shortest available XLR cable connector)
- Time saving assembly – 4 parts only, no screws
- Neutrik unique chuck type strain relief
- Gold or silver plated contacts
-  UL Recognized components
- Available in 3 - 7 pin configuration

- "Heavy duty" cable connectors for outdoor use
- All metal design, male stainless steel
- NC*FX-HD mates with NC*MPR-HD chassis connector and NC*MX-HD
- Dust and water protected according IP 65 in mated condition
- Available in 3 - 5 pin configuration

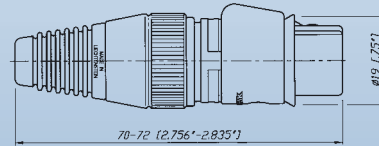
NC*FX



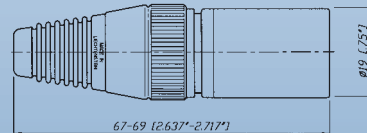
NC*MX



NC*FX-HD



NC*MX-HD



* ... 3 - 7 contacts

* ... 3 - 5 contacts

t o i d e n t i f y t h e o r i g i n a l

XLR Cable Connectors



XCC Series



FXS Series



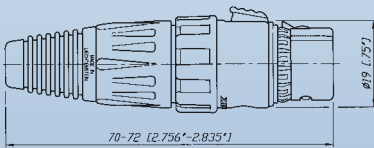
FX-SPEC Series



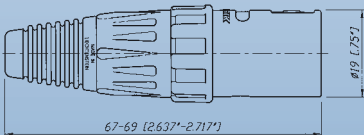
NC3FXCC

- 3 pole cable connector with a circumferential shield contact for best EMI protection
- Featuring a coaxial ground spring and coaxial hex crimp ferrule at the cable entrance for proper and reliable transition of the cable shield to the shell
- Zebra coding ring to indicate digital AES signals included

NC3FXCC



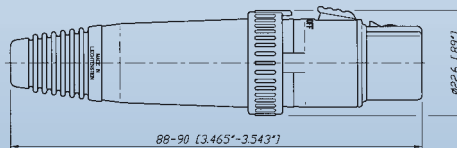
NC3MXCC



NC3FXS

- FX connector with noiseless ON-OFF switch short-circuiting contacts 2 + 3
- For use on a microphone without switch

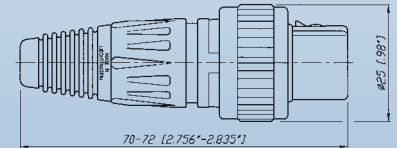
NC3FXS



NC3FX-SPEC

- Solid female cable connector with locking ring for highest security of connection
- Uninterrupted EMI protection
- Protect against accidental disconnects
- Thief-proof, grub screw secure connector onto microphone or gooseneck
- Avoids movements and noises

NC3FX-SPEC



Quality Thinking

Technical Data

| Specification | | XX Series | EMC Series | X Series | XCC Series | X-HD Series | FXS Series | XX-HE Series | FX-SPEC Series | RX Series |
|---|---|-----------|------------|----------|--------------|-------------|------------|--------------|----------------|-----------|
| Electrical | | | | | | | | | | |
| Number of contacts | | 3 - 7 | 3 | 3 - 7 | 3 | 3 - 5 | 3 | 3 | 3 | 3 - 7 |
| Contact resistance | ≤ 3 mΩ | ● | ● | ● | ● | ● | ● | ● | ● | ● |
| Insulation resistance | - initial: > 2 GΩ | ● | ● | ● | ● | ● | ● | ● | ● | ● |
| | - after damp heat test: > 1 GΩ | ● | ● | ● | ● | ● | ● | ● | ● | ● |
| Dielectric strength | 1500 V dc | ● | ● | ● | ● | ● | ● | ● | ● | ● |
| Cable shield-shell connection | choosable | ● | - | ● | - | ● | - | ● | ● | ● |
| | determined | - | capacitive | - | crimp | - | - | - | - | - |
| Shielding effectiveness | > 55 dB @ 1.3 GHz | - | ● | - | ● | - | - | - | - | - |
| Lossy ferrite bead on PIN 1 | | - | ● | - | - | - | - | - | - | - |
| Rated current per contact @ 35°C | | | | | | | | | | |
| | 3 pole: 16 A | ● | 5 A | ● | ● | ● | ● | ● | ● | ● |
| | 4 pole: 10 A | ● | - | ● | - | ● | - | - | - | ● |
| | 5, 6 pole: 7.5 A | ● | - | ● | - | ● | - | - | - | ● |
| | 7 pole: 5 A | ● | - | ● | - | - | - | - | - | ● |
| Capacitance between contacts | | | | | | | | | | |
| | 3 pole: ≤ 4 pF | ● | ● | ● | ● | ● | ● | ● | ● | ● |
| | 4, 5, 6 pole: ≤ 7 pF | ● | - | ● | - | ● | - | - | - | ● |
| | 7 pole: ≤ 9 pF | ● | - | ● | - | - | - | - | - | ● |
| Rated Voltage | 50 V ac | ● | ● | ● | ● | ● | ● | ● | ● | ● |
| Mechanical | | | | | | | | | | |
| Lifetime > 1'000 cycles | | ● | ● | ● | ● | ● | ● | ● | ● | ● |
| Insertion / withdrawal force ≤ 20 N | | ● | ● | ● | ● | ● | ● | ● | ● | ● |
| Cable O.D. range | 3.5 - 8.0 mm | ● | - | ● | 5.4 - 6.2 mm | ● | ● | ● | ● | ● |
| Max. wire size | 3 pole: 2.5 mm ² / AWG 14 | ● | AWG 20 | ● | ● | ● | ● | ● | ● | ● |
| | 4 pole: 1.5 mm ² / AWG 16 | ● | - | ● | - | ● | - | - | - | ● |
| | 5, 6, 7 pole: 1.0 mm ² / AWG 18 | ● | - | ● | - | ● | - | - | - | ● |
| Crimp tool: | 6.5 mm Hex die (size "E" acc. to IEC 60803) | - | - | - | ● | - | - | - | - | - |
| Material | | | | | | | | | | |
| Shell | Zinc diecast (ZnAl4Cu1) | ● | ● | ● | ● | - | ● | ● | ● | ● |
| | (gal Ni or black Cr) | ● | gal Ni | ● | ● | black Cr | ● | ● | ● | ● |
| | Stainless steel | - | - | - | - | - | - | - | - | - |
| Insert | Polyamide PA 6.6 30% GR | ● | ● | ● | ● | ● | ● | ● | ● | ● |
| Contacts | - female 3 pole: Bronze (CuSn8) | ● | ● | ● | ● | ● | ● | ● | ● | ● |
| | - female 4 - 7 pole & male: Brass (CuZn39Pb3) | ● | - | ● | ● | ● | - | ● | - | ● |
| Contact surface | Silver gal 2 μm Ag | ● | Au | ● | ● | Au | ● | ● | ● | ● |
| | or Gold gal 0.2 μm Au hard alloy over 2 μm Ni | - | - | - | - | - | - | - | - | - |
| Latch lock | St3K32 (latch) / Ck 67 (spring) | - | - | ● | ● | ● | ● | - | ● | - |
| Strain-relief clamp | Zinc diecast (ZnAl4Cu1) | ● | ● | - | - | - | - | ● | - | ● |
| | POM | ● | ● | ● | ● | ● | ● | ● | ● | ● |
| Bushing | PA / PU | ● | ● | ● | ● | PU | PU | ● | ● | ● |
| Circumferential ground spring | Bronze (CuSn6), Ni plated | - | ● | - | ● | - | - | - | - | - |
| Crimp ferrule | Brass (CuZn39Pb3), Ni plated | - | - | - | ● | - | - | - | - | - |
| Coding ring | Polyamide PA 6 15% GR | - | - | - | ● | - | - | - | - | - |
| Sealing jacket | EPDM | - | - | - | - | ● | - | - | - | - |
| Securing ring | Brass (CuZn39Pb3) | - | - | - | - | - | - | - | ● | - |
| Environmental | | | | | | | | | | |
| Operating temperature | -30°C to +80°C | ● | ● | ● | ● | ● | ● | ● | ● | ● |
| Flammability | UL 94 HB | ● | ● | ● | ● | ● | ● | ● | ● | ● |
| Protection class | IP 40 | ● | ● | ● | ● | IP 65 | ● | ● | ● | ● |
| Solderability complies with IEC 68-2-20 | | ● | ● | ● | ● | ● | ● | ● | ● | ● |
| Manufacturing Standard IEC 61076-2-103 | | ● | ● | ● | ● | ● | ● | ● | ● | ● |

- Quality Design

Ordering Information

Ordering Information for Cable Connectors

| Female | Male | Shell | Contact - plating | 3 pole | 4 pole | 5 pole | 6 pole | 7 pole |
|--------------------------|--------------------------|-------------------|-------------------|--------|--------|--------|--------|--------|
| XX Series | | | | | | | | |
| NC*FXX | NC*MXX | Nickel | Silver | ● | ● | ● | ● | ● |
| NC*FXX-B | NC*MXX-B | Black Cr | Gold | ● | ● | ● | ● | ● |
| NC*FXX-BAG | NC*MXX-BAG | Black Cr | Silver | ● | ● | ● | ● | ● |
| NC3FXX-**-D ¹ | NC3MXX-**-D ¹ | Nickel / Black Cr | Silver / Gold | ● | - | - | - | - |
| XX-EMC Series | | | | | | | | |
| NC3FXX-EMC | NC3MXX-EMC | Nickel | Gold | ● | - | - | - | - |
| NC3FXX-EMC-B | - | Black Cr | Gold | ● | - | - | - | - |
| X Series | | | | | | | | |
| NC*FX | NC*MX | Nickel | Silver | ● | ● | ● | ● | ● |
| NC*FX-B | NC*MX-B | Black Cr | Gold | ● | ● | ● | ● | ● |
| NC*FX-BAG | NC*MX-BAG | Black Cr | Silver | ● | ● | ● | ● | ● |
| NC3FX-**-D ¹ | NC3MX-**-D ¹ | Nickel / Black Cr | Silver / Gold | ● | - | - | - | - |
| NC6FSX ² | NC6MSX ² | Nickel | Silver | - | - | - | ● | - |
| NC6FSX-B ² | NC6MSX-B ² | Black Cr | Gold | - | - | - | ● | - |
| NC6FSX-BAG ² | NC6MSX-BAG ² | Black Cr | Silver | - | - | - | ● | - |
| RX Series | | | | | | | | |
| NC*FRX | NC*MRX | Nickel | Silver | ● | ● | ● | ● | ● |
| NC*FRX-B | NC*MRX-B | Black Cr | Gold | ● | ● | ● | ● | ● |
| NC*FRX-BAG | NC*MRX-BAG | Black Cr | Silver | ● | ● | ● | ● | ● |
| XX-HE Series | | | | | | | | |
| NC3FXX-HE | NC3MXX-HE | Velour Chromium | Gold | ● | - | - | - | - |
| FXS Series | | | | | | | | |
| NC3FXS | - | Nickel | Gold | ● | - | - | - | - |
| NC3FXS-B | - | Black Cr | Gold | ● | - | - | - | - |
| FX-SPEC Series | | | | | | | | |
| NC3FX-SPEC | - | Black Cr | Silver | ● | - | - | - | - |
| XCC Series | | | | | | | | |
| NC3FXCC | NC3MXCC | Nickel | Gold | ● | - | - | - | - |
| X-HD Series | | | | | | | | |
| NC*FX-HD | NC*MX-HD | Nickel | Gold | ● | ● | ● | - | - |
| NC3FX-HD-B | NC3MX-HD-B | Metal Black | Gold | ● | - | - | - | - |

Accessories and Assembly Tools

Detailed information on page 21 and 26.

* Number of Contacts

** Nickel or Black

-D¹ Bulk packed, to be ordered in multiples of 100 pcs.

² Switchcraft Equivalent

Look for the Logo



XLR Chassis Connectors



A Series

AA Series



NC3FAH1



NC3MAHR



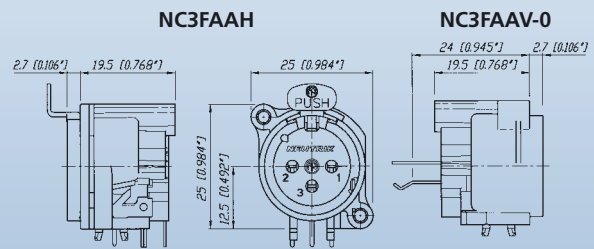
NC3FAAV2



NC3MAAH-1

- Smallest XLR receptacles, highest packing density
- Plastic housing, steel retention lug
- Fork type female contacts
- Polished contact areas and hard gold plating
- Various grounding options

- Front panel cutout and PCB layout 100% compatible to the A Series
- Most cost-effective series
- "Tulip" type female contact design with high contact pressure
- Selective gold plated contact and PCB termination area for best conductivity and solderability
- Plastic housing flammability UL 94 HB



Grounding Options (A / AA / B / BA Series):

- 1 ... Pin 1 & Panel & Shell connected, no separate ground contact
- 2 ... Separate ground contact connected to shell & panel, separate Pin 1 w/o number: No ground / Shell contact (except 4 / 5 pole)

t o i d e n t i f y t h e o r i g i n a l

XLR Chassis Connectors



B Series

BA Series



NC3FBV



NC3MBV

NEW



NC3FBAV2

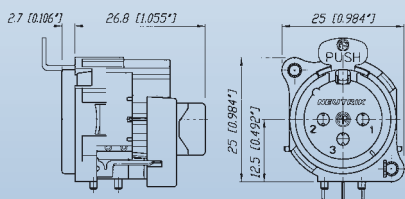


NC3MBAH

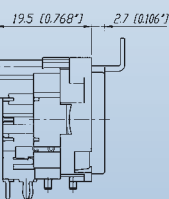
- Same as A Series with exception of a metal mounting flange enabling continuous circumferential ground contact to chassis for best EMC and RF protection
- Fastening with B-screw

- More economical version of B Series with modified metal flange
- Fastening with A-screw
- 3, 4 and 5 pole version

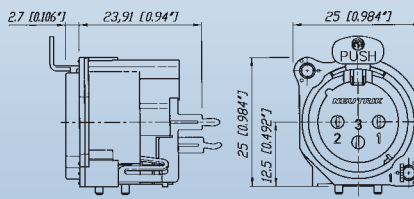
NC3FBY



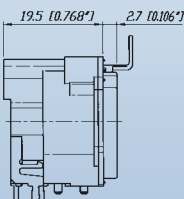
NC3FBH1



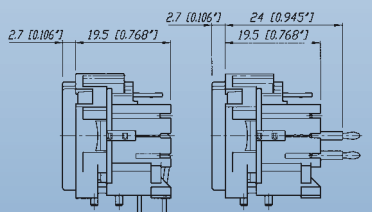
NC3FBAV



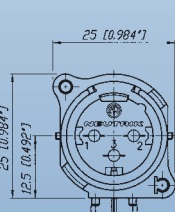
NC3FBAH



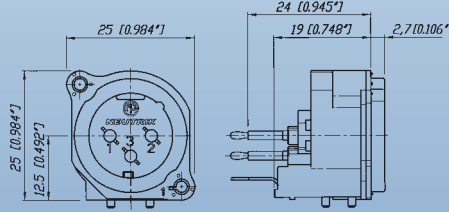
NC3MBH



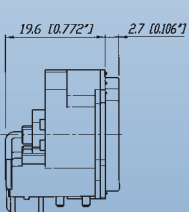
NC3MBV



NC3MBAV



NC3MBAH



Quality Thinking

XLR Chassis Connectors



A/B Series 5-pole switch

D Series



NC5FAV-SW



NC5MAV-SW



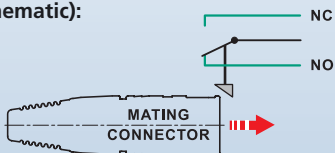
NC3FD-V



NC3MDM3-V

- A and B Series 5 pole connector with additional switch
- Normally open, normally closed (NO - NC) contact
- Switch activated by mating XLR cable connector
- Available in 5 pole, 3 or 4 pole on request

Inserting (Schematic):

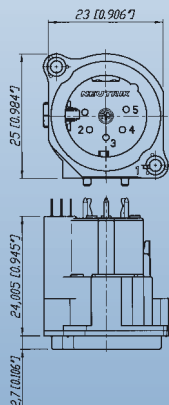


- "D" Shape metal shell
- Optimal RF protection using 3 shield contacts
- Horizontal and vertical PCB mount with separate ground contact
- Mounting holes with M3 threads available
- 2 piece connector, insert is removable from shell
- Front locked / unlocked insert
- Special version with screw termination

NC5FAV-SW



NC5MBV-SW



NC3FD-V / NC3FD-H



NC3MD-V / NC3MD-H



- Quality Design

XLR Chassis Connectors



DL Series



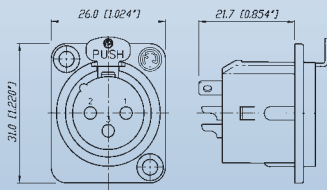
NC3FD-L-1



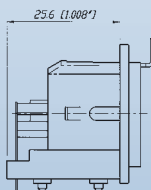
NC4MDM3-H

- Unified "D" metal shell
- Solder cups on 3 - 7 pole version
- Additional PCB mount on 4 and 5 pole
- Front and rear mountable
- High End "-HE" version available with machined female contacts, temperature resistant insulator and valuable velour chromium plating

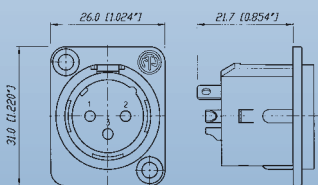
NC3FD-L-1



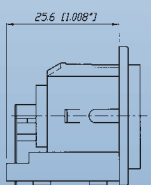
NC*FDM3-H



NC3MD-L-1



NC*MDM3-H



* ... 3 - 5 contacts

DLX Series

NEW



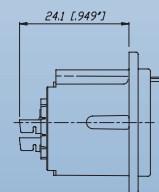
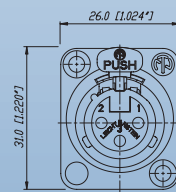
NC3FD-LX



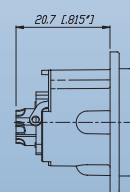
NC3MD-LX

- Next generation of the popular DL Series with greater functionality
- All metal housing works in combination with a new duplex ground contact yielding the best RF protection and ground conductivity in a chassis mount XLR
- Male connector's retention bar replaces plastic design with all metal version
- Unique cage type female contacts on 3 pole version for increased conductivity
- Machined male and female contacts on four to seven pin versions
- D-style housing provides installation compatibility with industry standard D mounting dimensions

NC3FD-LX



NC*MD-LX



* ... 3 - 7 contacts

Quality Thinking

XLR Chassis Connectors



EMC

MPR-HD Series

NEW

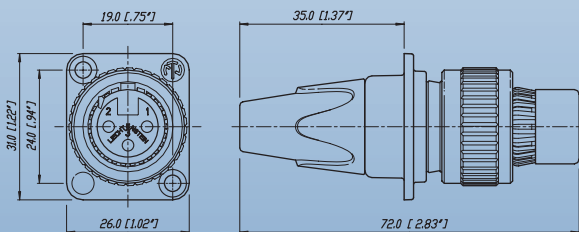


NC3FDX-EMC-SPEC

- 3-pole female XLR chassis connector with integrated capacitive shield to shell connection to avoid RF-interference and LF-noise
- 360° shield contact on female connector ensures best possible shielding and chassis contact
- D flange chassis for panel mount applications
- Includes the locking nut of the NC3FX-SPEC for secure fastening of a gooseneck for instance
- Special flange for large openings available
- Patent pending

Detailed information of RF-shielding see page 9 - EMC cable-connector.

NC3FDX-EMC-SPEC



NEW



NC3MPR-HD



NC5MPR-HD

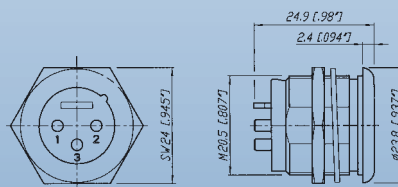
- IP 65 - in combination with NC*FX-HD cable connectors
- Perfect for outdoor applications
- Sealing gasket for water tight panel mount
- Gold plated contacts



NC5MPR-HD

NC5FX-HD

NC3MPR-HD



* ... 3 - 5 contacts

- Quality Design

XLR Chassis Connectors



P Series

Combo Series



NC4FP-1



NC6MP-B



NCJ9FI-V

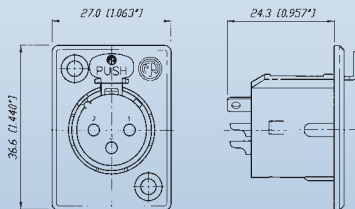


NCJ10FI-S

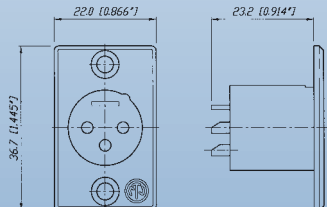
- Smallest available hard wiring receptacles with large solder cups
- Short female receptacle
- Compatible with Switchcraft DxM, Dx F; Cannon XLRx31, XLRx32
- 6 pole version available with Switchcraft contact arrangement (NC6FSP-1, NC6MSP)

- Combined XLR receptacle and 1/4" phone jack
- Attractive "front end" design
- Saves rack space by combining 2 connectors in one housing
- Horizontal or vertical PCB mounting or hard wire soldering
- Fully normalised
- Stereo or mono version
- Very low conductor capacitance, therefore suitable for digital audio
- Fastening: Self-tapping Plastite® screws with thread 2.9 x 1.06 and tri-rondular configuration (A screw)
- Front dimension: 30 x 27 mm

NC3FP-1



NC3MP



NCJ10FI-H















Quality Thinking

Accessories

Colour Coded Accessories

| Part No. | Description | Black | Brown | Red | Orange | Yellow | Green | Blue | Violet | Grey | White |
|-------------------------------|---|-------|-------|-----|--------|--------|-------|------|--------|------|-------|
| | | 0 | 1 | 2 | 3 | 4 | 5 | 6 | 7 | 8 | 9 |
| XLR Cable Connectors | | | | | | | | | | | |
| BSX-* | Coloured bushing for X Series | | | | | | | | | | |
| BXX-* | Coloured bushing for XX Series | | | | | | | | | | |
| XCR-* | Coloured coding ring for X Series | | | | | | | | | | |
| XXR-* | Coloured coding ring for XX Series | | | | | | | | | | |
| XLR Chassis Connectors | | | | | | | | | | | |
| ACRF-* | Coloured ring for female 4 + 5 pole A Series and 3 pole BA Series | | | | | | | | | | |
| ACRM-* | Coloured ring for male 4 + 5 pole A Series and 3 pole BA Series | | | | | | | | | | |
| DSS-* | Lettering plate for D Series | | | | | | | | | | |

Accessories

| | |
|-------------------------------|--|
| XLR Cable Connectors | |
| XXCR | Translucent coding ring for XX Series   Example |
| XCCR | Coding ring for X Series digital signals  |
| XLR Chassis Connectors | |
| DBA | Dummy-plate for D Series panel cut outs  |
| SCD* | Rubber sealing cover for female and male D Series  SCDF  SCDM |
| SC* | Rubber sealing cap for female and male XLR receptacles  SCF  SCM |
| SFAV | Rubber frame for A / B Series to mount between front plate and rear vertical print  SFAV  Example |
| A-Screw-1-8 | Plastite® screw 2.9 x 8** |
| B-Screw-1-8 | TAPTITE® screw 2.5 x 8* |
| |  A Screw  B Screw |

** ... Minimum order quantity of 1000 pcs.

- Quality Design

Technical Data

| Specification | | A Series | AA Series | B Series | BA Series | D Series | DL/DLX Series | MPR-HD Series | P Series | Combo Series |
|---|--|----------|-----------|----------|-----------|----------|---------------|---------------|-------------|--------------|
| Electrical | | | | | | | | | | |
| Number of contacts | | 3 - 5 | 3 | 3 - 5 | 3 | 3 | 3 - 7 | 3 - 5 | 3 - 7 (6**) | 5 - 10 |
| Contact resistance | ≤ 5 mΩ | ● | ≤ 8 mΩ | ● | ● | ● | ● | ● | ● | ≤ 10 mΩ |
| Insulation resistance | - initial: > 2 GΩ | ● | ● | ● | ● | ● | ● | ● | ● | ● |
| | - after damp heat test: > 1 GΩ | ● | ● | ● | ● | ● | ● | ● | ● | > 500 MΩ |
| Dielectric strength | 1500 V dc | ● | ● | ● | ● | ● | ● | ● | ● | ● |
| Rated voltage | 50 V ac | ● | ● | ● | ● | ● | ● | ● | ● | ● |
| Rated current per contact | | | | | | | | | | |
| | 3 pole: 6 A | ● | ● | ● | ● | ● | 16 A | 16 A | 16 A | - |
| | 4 pole: 6 A | ● | - | ● | - | - | 10 A | 10 A | 10 A | - |
| | 5, 6 pole: 3 A | ● | - | ● | - | - | 7.5 A | 7.5 A | 7.5 A | - |
| | 7 pole: 5 A | - | - | - | - | - | ● | - | ● | - |
| Combo XLR + Jack contact | 7.5 A | - | - | - | - | - | - | - | - | ● |
| Capacitance between contacts | | | | | | | | | | |
| | 3 pole: ≤ 7 pF | ● | ● | ● | ● | - | ≤ 4 pF | ≤ 4 pF | ≤ 4 pF | ≤ 2 pF |
| | 4, 5, 6 pole: ≤ 7 pF | ● | - | ● | - | - | ● | ● | ● | - |
| | 7 pole: ≤ 9 pF | - | - | - | - | - | ● | - | ● | - |
| Mechanical | | | | | | | | | | |
| Lifetime > 1'000 mating cycles | | ● | ● | ● | ● | ● | ● | ● | ● | ● |
| Insertion / withdrawal force | ≤ 20 N | ● | ● | ● | ● | ● | ● | ● | ● | ●25 N |
| Retention method | | | | | | | | | | |
| | - standard: latch lock | ● | ● | ● | ● | ● | ● | ● | ● | ●(XLR) |
| | - "0" Version: ≥ 20 N separating force | ● | ● | ● | ● | ● | ● | ● | ● | ●25 N |
| Material | | | | | | | | | | |
| Insert | Polyamide PA 6.6 30% GR | ● | ● | ● | ● | ● | ● | ● | ● | ● |
| Shell | Zinc diecast ZnAl4Cu1 | - | - | - | - | ● | ● | ● | ● | - |
| | (gal Ni or black Cr plated) | - | - | - | - | ● | ● | Ni plated | ● | - |
| Ring | Zinc diecast ZnAl4Cu1 | - | - | ● | ● | - | - | - | - | - |
| Contacts | - female 3 pole: Bronze CuSn6 | ● | ● | ● | ● | ● | ● | - | ● | ● |
| | 4 - 5 pole: Bronze CuSn6 | ● | - | ● | - | - | - | - | - | - |
| | 4 - 7 pole: Brass CuZn39Pb3 | - | - | - | - | - | ● | - | ● | - |
| | - male: Brass CuZn35Pb2 | ● | ● | ● | ● | ● | ● | ● | ● | - |
| Contact surface | gal 0.2 µm AuCo over 2 µm NiP15 (Tribor®) | ● | ● | ● | ● | - | - | - | - | ● |
| | gal 2 µm Ag or gal 0.2 µm Au hard alloy over 2 µm Ni | - | - | - | - | ● | ● | Au | ● | - |
| Latch lock & spring | Ck 67 steel, treated | ● | ● | ● | ● | ● | ● | - | ● | ● |
| Environmental | | | | | | | | | | |
| Operating temperature | -30°C to +80°C | ● | ● | ● | ● | ● | ● | ● | ● | ● |
| Protection class | IP 40 | ● | ● | ● | ● | ● | ● | IP 65 | ● | ● |
| Flammability | UL 94 HB | ● | ● | ● | ● | ● | ● | ● | ● | ● |
| | UL 94 V-0 | 3 pole | - | 3 pole | - | - | - | - | - | - |
| Solderability complies with IEC 68-2-20 | | ● | ● | ● | ● | ● | ● | ● | ● | ● |
| Mounting screw | | A | A | 1) | A | - | - | - | - | A |
| Colour coding | | ACR-* | - | - | ACR-* | DSS | DSS | - | - | - |
| | (4 + 5 pole only) | | | | | | | | | |
| 1) B Series 3 pole connectors > B-screw, 4 & 5 pole versions > A-screw | | | | | | | | | | |
| ** P Series male 3 - 6 pole | | | | | | | | | | |

Quality Thinking

Ordering Information for Receptacles

| Female | Male | Shell | Contact | 3 pole | 4 pole | 5 pole | Female | Male | Shell | Contact | 3 pole |
|-----------------|-----------|---------------|---------|--------|--------|--------|------------------|-----------|---------------|---------|--------|
| A Series | | | | | | | AA Series | | | | |
| NC*FAH-D | | Black Plastic | Gold | - | ● | ● | NC3FAAH | NC3MAAH | Black Plastic | Gold | ● |
| | NC*MAH | Black Plastic | Gold | ● | ● | ● | NC3FAAH-0 | | Black Plastic | Gold | ● |
| NC*FAH-0 | | Black Plastic | Gold | ● | ● | ● | NC3FAAH1 | NC3MAAH-1 | Black Plastic | Gold | ● |
| | NC3MAH-0 | Black Plastic | Gold | ● | - | - | NC3FAAH1-0 | | Black Plastic | Gold | ● |
| NC3FAHL-0 | | Black Plastic | Gold | ● | - | - | | NC3MAAH-0 | Black Plastic | Gold | ● |
| NC3FAHR-0 | | Black Plastic | Gold | ● | - | - | NC3FAAH2 | | Black Plastic | Gold | ● |
| NC3FAH1-D | NC3MAH-1 | Black Plastic | Gold | ● | - | - | NC3AAH2-0 | | Black Plastic | Gold | ● |
| NC3FAH1-0 | | Black Plastic | Gold | ● | - | - | NC3FAAV | NC3MAAV | Black Plastic | Gold | ● |
| NC3FAHL1-D | | Black Plastic | Gold | ● | - | - | NC3FAAV-0 | | Black Plastic | Gold | ● |
| | NC3MAHL | Black Plastic | Gold | ● | - | - | NC3FAAV1 | NC3MAAV-1 | Black Plastic | Gold | ● |
| NC3FAHL1-0 | | Black Plastic | Gold | ● | - | - | NC3AAV1-0 | | Black Plastic | Gold | ● |
| NC3FAHR1-D | | Black Plastic | Gold | ● | - | - | | NC3MAAV-0 | Black Plastic | Gold | ● |
| | NC3MAHR | Black Plastic | Gold | ● | - | - | NC3FAAV2 | | Black Plastic | Gold | ● |
| NC3FAHR1-0 | | Black Plastic | Gold | ● | - | - | NC3FAAV2-0 | | Black Plastic | Gold | ● |
| NC3FAH2-D | | Black Plastic | Gold | ● | - | - | | | | | |
| NC3FAH2-0 | | Black Plastic | Gold | ● | - | - | | | | | |
| NC3FAHR2-D | | Black Plastic | Gold | ● | - | - | | | | | |
| NC3FAHR2-0 | | Black Plastic | Gold | ● | - | - | | | | | |
| NC*FAV-D | | Black Plastic | Gold | - | ● | ● | | | | | |
| | NC*MAV | Black Plastic | Gold | ● | ● | ● | | | | | |
| NC*FAV-0 | | Black Plastic | Gold | ● | ● | ● | | | | | |
| | NC3MAV-0 | Black Plastic | Gold | ● | - | - | | | | | |
| NC3FAV1-D | NC3MAV-1 | Black Plastic | Gold | ● | - | - | | | | | |
| NC3FAV1-0 | | Black Plastic | Gold | ● | - | - | | | | | |
| NC3FAV2-D | | Black Plastic | Gold | ● | - | - | | | | | |
| NC3FAV2-0 | | Black Plastic | Gold | ● | - | - | | | | | |
| NC3FAY-D | NC3MAY | Black Plastic | Gold | ● | - | - | | | | | |
| NC3FAY-0 | | Black Plastic | Gold | ● | - | - | | | | | |
| NC5FAV-SW-D | NC5MAV-SW | Black Plastic | Gold | - | - | ● | | | | | |

A Series comes with Push Latch disassembled, assembled Push on request.

AA Series comes with Push Latch assembled.

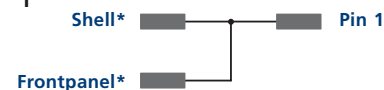
A / AA Series rear mount only, all PCB mount except Y version = IDC

Grounding Options

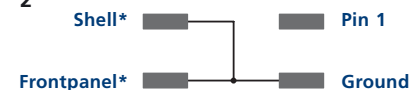
A / AA Series and B / BA Series

Female

"1"



"2"



Male

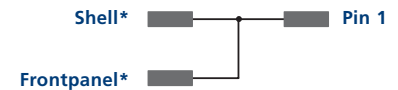
w/o number



"0"



"1"



Shell* ... Contact to shell of mating connector

Frontpanel* ... Connection to frontpanel by fastening screw

Ordering Information

Ordering Information for Receptacles

| Female | Male | Flange | Contact | 3 pole | 4 pole | 5 pole | Female | Male | Flange | Contact | 3 pole | 4 pole | 5 pole |
|---|-----------|-------------|---------|--------|--------|--------|--|-----------|--------|---------|--------|--------|--------|
| B Series | | | | | | | BA Series | | | | | | |
| NC*FBH-D | | Metal | Gold | - | ● | ● | NC3FBAH1-D | | Metal | Gold | ● | - | - |
| | NC*MBH | Metal | Gold | ● | ● | ● | | NC3MBAH | Metal | Gold | ● | - | - |
| NC*FBH-B-D | | Black Metal | Gold | - | ● | ● | NC3FBAH1-0 | | Metal | Gold | ● | - | - |
| | NC*MBH-B | Black Metal | Gold | ● | - | ● | | NC3MBAH-0 | Metal | Gold | ● | - | - |
| NC3FBH1-D | | Metal | Gold | ● | - | - | NC3FBAH2-D | | Metal | Gold | ● | - | - |
| NC3FBH1-B-D | | Black Metal | Gold | ● | - | - | | NC3MBAH-1 | Metal | Gold | ● | - | - |
| NC3FBHL1-D | | Metal | Gold | ● | - | - | NC3FBAH2-0 | | Metal | Gold | ● | - | - |
| | NC3MBHL | Metal | Gold | ● | - | - | NC3FBAV1-D | | Metal | Gold | ● | - | - |
| NC3FBHR1-D | | Metal | Gold | ● | - | - | | NC3MBAV | Metal | Gold | ● | - | - |
| NC3FBH2-D | | Metal | Gold | ● | - | - | NC3FBAV1-0 | | Metal | Gold | ● | - | - |
| NC3FBH2-B-D | | Black Metal | Gold | ● | - | - | | NC3MBAV-0 | Metal | Gold | ● | - | - |
| NC3FBHR2-D | | Metal | Gold | ● | - | - | NC3FBAV2-D | | Metal | Gold | ● | - | - |
| | NC3MBHR | Metal | Gold | ● | - | - | | NC3MBAV-1 | Metal | Gold | ● | - | - |
| NC*FBV-D | | Metal | Gold | - | ● | ● | NC3FBAV2-0 | | Metal | Gold | ● | - | - |
| | NC*MBV | Metal | Gold | ● | ● | ● | | | | | | | |
| NC*FBV-B-D | | Black Metal | Gold | - | ● | ● | | | | | | | |
| | NC*MBV-B | Black Metal | Gold | ● | - | ● | | | | | | | |
| NC3FBV1-D | | Metal | Gold | ● | - | - | | | | | | | |
| NC3FBV1-B-D | | Black Metal | Gold | ● | - | - | | | | | | | |
| NC3FBV2-D | | Metal | Gold | ● | - | - | | | | | | | |
| NC3FBV2-B-D | | Black Metal | Gold | ● | - | - | | | | | | | |
| NC3FBY-D | NC3MBY | Metal | Gold | ● | - | - | | | | | | | |
| NC3FBY-B-D | NC3MBY-B | Black Metal | Gold | ● | - | - | | | | | | | |
| NC5FBV-SW-D | NC5MBV-SW | Metal | Gold | - | - | ● | | | | | | | |
| NC3FBH1-E-D | NC3MBV-E | Metal | Gold | ● | - | - | | | | | | | |
| NC3FBH2-E-D | | Metal | Gold | ● | - | - | | | | | | | |
| | NC3MBH-E | Metal | Gold | ● | - | - | | | | | | | |
| Special version for 3 pole B-Series with M2.5 mounting holes (-M25) on request. | | | | | | | B / BA Series comes with Push Latch disassembled, assembled Push on request. | | | | | | |
| | | | | | | | B / BA Series rear mount only, all PCB mount except Y version = IDC | | | | | | |

Quality Thinking

Ordering Information

Ordering Information for Receptacle

| Female | Male | Shell | Contact | 3 | 4 | 5 | 6 | 7 | Female | Male | Shell | Contact | 3 | 4 | 5 | 6 | 7 | | | |
|--------------------|---------------|---|---------|------|------|------|------|------|----------------------|-----------|----------|----------|----------|----------|----------|-----------|-----------|-----------|----------|-----------|
| | | | | pole | pole | pole | pole | pole | | | | | pole | pole | pole | pole | pole | | | |
| D Series | | | | | | | | | P Series | | | | | | | | | | | |
| NC3FD-V | NC3MD-V | Nickel | Silver | ● | - | - | - | - | NC*FP-1 | | Nickel | Silver | ● | ● | ● | ● | ● | | | |
| NC3FD-V-B | NC3MD-V-B | Black Cr | Gold | ● | - | - | - | - | | NC*MP | Nickel | Silver | ● | ● | ● | ● | - | | | |
| NC3FD-V-BAG | NC3MD-V-BAG | Black Cr | Silver | ● | - | - | - | - | NC*FP-B-1 | | Black Cr | Gold | ● | ● | ● | ● | ● | | | |
| NC3FDM3-V | NC3MDM3-V | Nickel | Silver | ● | - | - | - | - | | NC*MP-B | Black Cr | Gold | ● | ● | ● | ● | - | | | |
| NC3FDM3-V-B | NC3MDM3-V-B | Black Cr | Gold | ● | - | - | - | - | NC*FP-BAG-1 | NC*MP-BAG | Black Cr | Silver | ● | ● | ● | ● | - | | | |
| NC3FD-H | NC3MD-H | Nickel | Silver | ● | - | - | - | - | | | | | | | | | | | | |
| NC3FD-H-B | NC3MD-H-B | Black Cr | Gold | ● | - | - | - | - | | | | | | | | | | | | |
| NC3FD-H-BAG | NC3MD-H-BAG | Black Cr | Silver | ● | - | - | - | - | | | | | | | | | | | | |
| NC3FDM3-H-D | NC3MDM3-H | Nickel | Silver | ● | - | - | - | - | | | | | | | | | | | | |
| NC3FDM3-H-B-D | NC3MDM3-H-B | Black Cr | Gold | ● | - | - | - | - | | | | | | | | | | | | |
| NC3FDM3-H-BAG-D | NC3MDM3-H-BAG | Black Cr | Gold | ● | - | - | - | - | | | | | | | | | | | | |
| DL Series | | | | | | | | | MPR-HD Series | | | | | | | | | | | |
| NC*FD-L-1 | NC*MD-L-1 | Nickel | Silver | ● | ● | ● | ● | ● | - | NC*MPR-HD | Nickel | Gold | ● | ● | ● | - | - | | | |
| NC*FD-L-B-1 | NC*MD-L-B-1 | Black Cr | Gold | ● | ● | ● | ● | ● | | | | | | | | | | | | |
| NC*FD-L-BAG-1 | NC*MD-L-BAG-1 | Black Cr | Silver | ● | ● | ● | ● | - | | | | | | | | | | | | |
| NC*FDM3-L-1-D | NC*MDM3-L-1 | Nickel | Silver | ● | ● | ● | - | - | | | | | | | | | | | | |
| NC3FDM3LBAG-1-D | NC3MDM3LBAG-1 | Black Cr | Silver | ● | - | - | - | - | | | | | | | | | | | | |
| NC3FD-L-1-HE | NC3MD-L-1-HE | Velour Cr | Gold | ● | - | - | - | - | | | | | | | | | | | | |
| NC*FDM3-H-D | NC*MDM3-H | Nickel | Silver | - | ● | ● | ● | - | | | | | | | | | | | | |
| NC*FDM3-H-B-D | NC*MDM3-H-B | Nickel | Silver | - | ● | ● | ● | - | | | | | | | | | | | | |
| NC*FDM3-H-BAG-D | NC*MDM3-H-BAG | Black Cr | Silver | - | ● | ● | ● | - | | | | | | | | | | | | |
| NC3FD-S-1-B | NC3MD-S-1-B | Black Cr | Silver | ● | - | - | - | - | | | | | | | | | | | | |
| DLX Series | | | | | | | | | Combo Series | | | | | | | | | | | |
| NC*FD-LX | NC*MD-LX | Nickel | Silver | ● | ● | ● | ● | ● | | | | | | | | | | | | |
| NC*FD-LX-B | NC*MD-LX-B | Black Cr | Gold | ● | ● | ● | ● | ● | | | | | | | | | | | | |
| NC*FD-LX-BAG | NC*MD-LX-BAG | Black Cr | Silver | ● | ● | ● | ● | ● | | | | | | | | | | | | |
| NC*FD-LX-M3 | NC*MD-LX-M3 | Nickel | Silver | ● | ● | ● | - | - | | | | | | | | | | | | |
| NC3FD-LX-HE | NC3MD-LX-HE | Velour Cr | Gold | ● | - | - | - | - | | | | | | | | | | | | |
| EMC XLR | | | | | | | | | | | | | | | | | | | | |
| NC3FDX-EMC-SPEC | | Black Cr | Gold | ● | - | - | - | - | | | | | | | | | | | | |
| Accessories | | | | | | | | | | | | | | | | | | | | |
| FDR-1 | | Black round panel mounting flange with screws for larger panel cut-outs | | | | | | | | | | | | | | | | | | |
| | | | | | | | | | Contact # | | | | | | | | | | | |
| | | | | | | | | | | 1 | 2 | 3 | T | R | S | TN | RN | SN | G | GN |
| | | | | | | | | | NCJ5FI-* | x | x | x | x | | x | | | | x | |
| | | | | | | | | | NCJ6FI-* | x | x | x | x | x | x | | | | x | |
| | | | | | | | | | NCJ9FI-* | x | x | x | x | x | x | x | x | x | x | |
| | | | | | | | | | NCJ10FI-* | x | x | x | x | x | x | x | x | x | x | x |

- Quality Design

Ordering Information

Panel Cutouts

A / AA / B / BA Series D / DL / DLX Series P Series Female P Series Male Combo MPR Series



Assembly Tools

HTX Hand tool to tighten the X / XX-bushing



BTXX Assembly fixture to tightening the XX-bushing



HX-R-BNC Crimp tool for XCC Series



DIE-R-BNC-PT Crimp die for XCC Series (6.5 mm HEX)





Компания «ЭлектроПласт» предлагает заключение долгосрочных отношений при поставках импортных электронных компонентов на взаимовыгодных условиях!

Наши преимущества:

- Оперативные поставки широкого спектра электронных компонентов отечественного и импортного производства напрямую от производителей и с крупнейших мировых складов;
- Поставка более 17-ти миллионов наименований электронных компонентов;
- Поставка сложных, дефицитных, либо снятых с производства позиций;
- Оперативные сроки поставки под заказ (от 5 рабочих дней);
- Экспресс доставка в любую точку России;
- Техническая поддержка проекта, помощь в подборе аналогов, поставка прототипов;
- Система менеджмента качества сертифицирована по Международному стандарту ISO 9001;
- Лицензия ФСБ на осуществление работ с использованием сведений, составляющих государственную тайну;
- Поставка специализированных компонентов (Xilinx, Altera, Analog Devices, Intersil, Interpoint, Microsemi, Aeroflex, Peregrine, Syfer, Eurofarad, Texas Instrument, Miteq, Cobham, E2V, MA-COM, Hittite, Mini-Circuits, General Dynamics и др.);

Помимо этого, одним из направлений компании «ЭлектроПласт» является направление «Источники питания». Мы предлагаем Вам помощь Конструкторского отдела:

- Подбор оптимального решения, техническое обоснование при выборе компонента;
- Подбор аналогов;
- Консультации по применению компонента;
- Поставка образцов и прототипов;
- Техническая поддержка проекта;
- Защита от снятия компонента с производства.



Как с нами связаться

Телефон: 8 (812) 309 58 32 (многоканальный)

Факс: 8 (812) 320-02-42

Электронная почта: org@eplast1.ru

Адрес: 198099, г. Санкт-Петербург, ул. Калинина, дом 2, корпус 4, литера А.