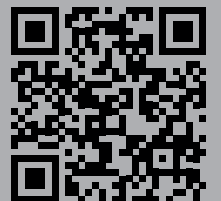




BNC Connectors



| Content | Page |
|---|-------------|
| UHD BNC - rearTWIST Cable Connectors | 124 |
| UHD BNC - Chassis | 124 |
| rearTWIST HD Cable Connectors | 125 |
| Cable to Connector Guide | 126 |
| Connector to Cable Guide | 128 |
| HD BNC Chassis & Cable Jack Panel Version | 130 |
| Technical Data | 131 |
| Accessories | 132 |

NEUTRIK®, **crystalCON®**, **etherCON®**, **maxCON®**, **miniCON®**, **nanoCON®**, **neutriCON®**, **opticalCON®**, **powerCON®**, **Profi®**, **rearTWIST®**, **silentPLUG®**, **speakON®**, **DIWA®**, **XIRIUM®**, are registered trademarks of Neutrik AG.

NEUTRIK® 75 Ω BNC Connectors



Neutrik offers a variety of 75 Ω cable and chassis BNC connectors. The rearTWIST cable connectors are easy to handle in high density applications such as video patchbays and switches, provide a tactile and fast assembly and offer colour coding as a standard. All parts of our BNC series are precisely machined to our high quality standards.

rearTWIST UHD – BNC Connector

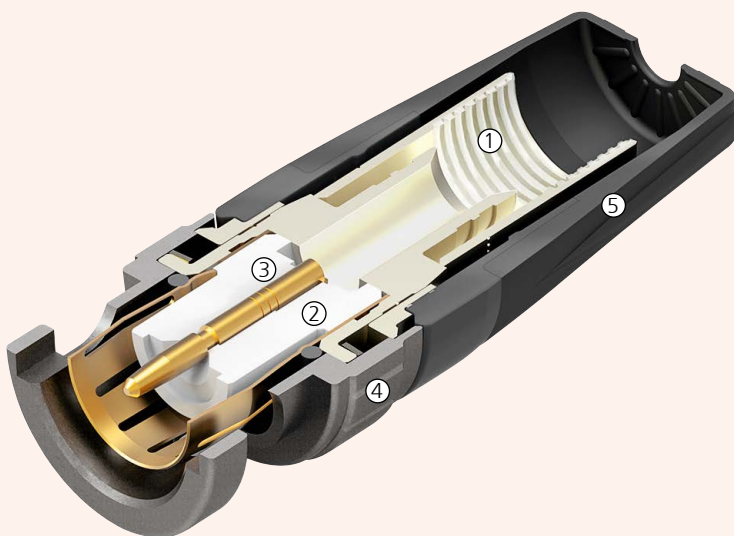
With the transition to 4K or even 8K-signals the impedance of BNC connectors became more important than ever. Every deviate impedance has a negative influence on return loss and VSWR (Voltage Standing Wave Ratio) which are important measurements for reflected signals in a transmission line. Especially on high data rates up to 24 Gb/s, as they occur when transmitting ultra high definition (UHD) signals, an impedance mismatch results in high return loss.

Neutrik's new rearTWIST UHD-BNC connector is a specifically for high frequencies optimized BNC connector; based on the proven rearTWIST technology. The unique insulator design in combination with the reduced crimp diameter of the gold plated center pin allows UHD-data transmission within the required return loss limits.



4K8K

Features & Benefits



- ① Screen and cable jacket crimp instead of screen crimp only. Grooved inner surface holds the cable jacket to prevent tearing braids.
- ② High frequency optimized insulator design for UHD-transmissions.
- ③ Reduced pin crimp diameter for performance improvement (return loss values).
- ④ Swiss antraloy plating
- ⑤ rearTWIST boot for easy access in high density applications.



Gold plated contacts



Precise Swiss machined parts



rearTWIST UHD & Panel Version

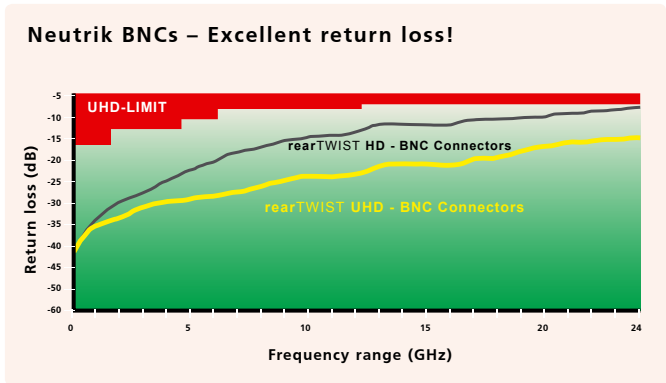


NBNC75BFG7X



NBB75DFGX

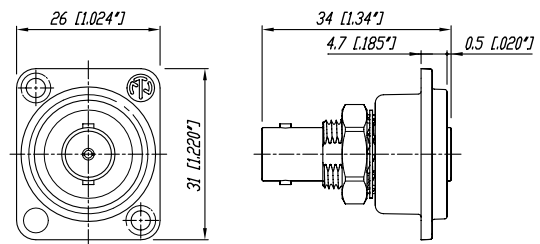
- Optimized contact pin and insulator design for UHD-data transmission
- Proven rearTWIST technology
- Swiss antralooy plating
- Available for common cable types
- Fully compatible with conventional BNC chassis connectors
- D-size feedthrough chassis connectors



NBNC75*



NBB75DFG





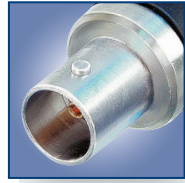
Bayonet locking



Gold plated contacts



9 different colors available



Female cable jack



rearTWIST HD



NBNC75BFG7



NBNC75BLP7



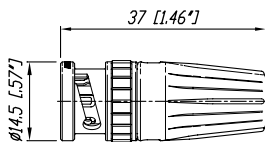
NBNB75GLP9



NBTB75CFI4

- "rearTWIST Principle" locking / unlocking using the easily accessible soft touch boot (Patent DE 100 48507)
- Ideal for recessed bulkheads where access to the "head" of the connector might be an issue. These connectors turn from the back and not the front.
- Snug-fit center pin insert provides tactile feedback
- Shield and jacket crimp technology prevents the problem of an exposed grounding braid on cable assemblies
- Large version for RG 11 cable
- Precise Swiss machined brass parts for outstanding durability
- Accessories include color coded boots in 10 standard colors, crimp tool and dies
- Sleek female cable jack e.g. for Y-cables

NBNC75*



| | rearTWIST UHD | rearTWIST HD | rearTWIST HD Tiny | Cable Jack & Panel | Pin Crimp in mm | Hex Crimp in mm | Stripping Tool | | | | |
|-----------------------------------|-------------------------------|-----------------|----------------------|-----------------------|--------------------|--------------------|-------------------|------------|------------|--------------|---|
| | | | | | UHD | HD | CS-BNC-RT | CS-BNC-LCS | CS-BNC-LCV | + CS-BNC-TCI | |
| Belden | | | | | | | | | | | |
| Belden 1277R, 1278R, 1279R | | | NBTC75BNN5 | | | 1.6 | 4.53 | ● | - | - | ● |
| Belden 1406B, 1407B, 1417B | | | NBTC75BVV5 | | | 1.6 | 5.00 | ● | - | - | ● |
| Belden 1426A, 1505A (ANH), 4505R | NBNC75BLP9X | NBNC75BLP9 | | NBNB75GLP9 | 1.07 | 1.6 | 6.47 | ● | - | - | - |
| Belden 1505F | NBNC75BJP9X | NBNC75BJP9 | | | 1.07 | 1.6 | 6.47 | ● | - | - | - |
| Belden 1506A | | NBNC75BIJ9 | | | | 1.6 | 5.41 | ● | - | - | - |
| Belden 1520A, 1521A, 1522A, 179DT | | | NBTC75BFI4 | NBTB75CFI4 | | 1.6 | 4.06 | ● | - | - | ● |
| Belden 1694A (ANH, DNH), 4694R | | | | | | | | | | | |
| Belden 70082, 70082CH & 70082NH | NBNC75BTU11X NBNC75BTUP11X | NBNC75BTU11 | | | 1.07 | 1.6 | 7.36 | ● | - | - | - |
| | | | | | 1.07 | | 7.06 | ● | - | - | - |
| Belden 1694F | | NBNC75BRU11 | | | | 1.6 | 7.36 | ● | - | - | - |
| Belden 1695A | NBNC75BQP11X | NBNC75BQP11 | | | | 1.6 | 6.47 | ● | - | - | - |
| Belden 1855A | NBNC75BDD6X | NBNC75BDD6 | | | 1.07 | 1.6 | 4.53 | ● | - | - | - |
| Belden 1865A | | | NBTC75BXX6 | | | 1.6 | 5.00 | ● | - | - | ● |
| Belden 1855ENH | NBNC75BFG7X | NBNC75BFG7 | | | 1.07 | 1.6 | 5.00 | ● | - | - | - |
| Belden 7731A (ANH) | | NBLC75BVZ17 | | | | 1.8 | 10.00 | - | - | ● | - |
| Belden 8218 | | | NBTC75BXX5 | | | 1.6 | 5.00 | ● | - | - | ● |
| Belden 8241 | NBNC75BLP7X | NBNC75BLP7 | | | 1.07 | 1.6 | 6.47 | ● | - | - | - |
| Belden 8241F | NBNC75BLP9X | NBNC75BLP9 | | NBNB75GLP9 | 1.07 | 1.6 | 6.47 | ● | - | - | - |
| Belden 8281 | | NBNC75BXY9 | | | | 1.6 | 8.23 | ● | - | - | - |
| Belden 8281F | | NBNC75BY9 | | | | 1.6 | 8.23 | ● | - | - | - |
| Belden 9221 | | | NBTC75BLI4 | | | 1.6 | 4.06 | ● | - | - | ● |
| Belden 1794A | | NBNC75BZV14 | | | | 1.6 | 8.23 | ● | - | - | - |
| Canare | | | | | | | | | | | |
| Canare L-3CFB, L-3C2VS | | NBNC75BHK7 | | | | 1.6 | 5.41 | ● | - | - | - |
| Canare L-4CFB | NBNC75BLP9X | NBNC75BLP9 | | NBNB75GLP9 | 1.07 | 1.6 | 6.47 | ● | - | - | - |
| Canare L-4.5CHD, L-4.5CHWS | NBNC75BTU11X | NBNC75BTU11 | | | 1.07 | 1.6 | 7.36 | ● | - | - | - |
| Canare L-5CFB | | NBNC75BYY11 | | | | 1.6 | 8.23 | ● | - | - | - |
| Canare LV-61S | NBNC75BLP7X | NBNC75BLP7 | | | 1.07 | 1.6 | 6.47 | ● | - | - | - |
| Canare LV-77S | | NBNC75BYY9 | | | | 1.6 | 8.23 | ● | - | - | - |
| Canare V(3-5)-3C | | NBNC75BG7 | | | | 1.6 | 5.00 | ● | - | - | - |
| Canare V(3-5)-4CFB | | NBNC75BJ9 | | | | 1.6 | 5.41 | ● | - | - | - |
| Canare V(3-5)-5C | | NBNC75BRS9 | | | | 1.6 | 7.01 | ● | - | - | - |
| Canare V(3-5)-5CFB | | NBNC75BWS11 | | | | 1.6 | 7.01 | ● | - | - | - |
| Canare L-1.5C2VS | | | NBTC75BLI4 | | | 1.6 | 4.06 | ● | - | - | ● |
| Canare L-3CFW | NBNC75BLP7X | NBNC75BLP7 | | | 1.07 | 1.6 | 6.47 | ● | - | - | - |
| Canare L-5CFW | | NBNC75BYY11 | | | | 1.6 | 8.23 | ● | - | - | - |
| Canford | | | | | | | | | | | |
| Canford SDV-M | | NBTB75CNN5 | | | | 1.6 | 4.53 | ● | - | - | ● |
| Canford SDV, SDV-X, SDM | NBNC75BFG7X | NBNC75BFG7 | | | 1.07 | 1.6 | 5.00 | ● | - | - | - |
| Canford SDV-L, SDV-F | | NBNC75BWS11 | | | | 1.6 | 7.01 | ● | - | - | - |
| Canford SDV-HD | | NBLC75BVZ17 | | | | 1.8 | 10.00 | - | - | ● | - |
| Canford SDV-F-HD | | NBNC75BWU13 | | | | 1.6 | 7.36 | ● | - | - | - |
| Canford VCS (BBC PSF1/3) | | NBNC75BLS7 | | | | 1.6 | 7.01 | ● | - | - | - |
| Clark | | | | | | | | | | | |
| Clark CD7559-0, CD7559F-0 | NBNC75BLP9X | NBNC75BLP9 | | | 1.07 | 1.6 | 6.47 | ● | - | - | - |
| Clark CD7523-7 | NBNC75BDD6X | NBNC75BDD6 | | | 1.07 | 1.6 | 4.53 | ● | - | - | ● |
| Clark CD7506-0 | NBNC75BTU11X | NBNC75BTU11 | | | 1.07 | 1.6 | 7.36 | ● | - | - | - |
| Clark CD7506F-0 | | NBNC75BRU11 | | | | 1.6 | 7.36 | ● | - | - | - |
| Commscope | | | | | | | | | | | |
| Commscope 2065V | | NBNC75BIJ9 | | | | 1.6 | 5.41 | ● | - | - | - |
| Commscope 2279V | | NBNC75BQP11 | | | | 1.6 | 6.47 | ● | - | - | - |
| Commscope 5563 | NBNC75BLP7X | NBNC75BLP7 | | | 1.07 | 1.6 | 6.47 | ● | - | - | - |
| Commscope 5565 | NBNC75BLP9X | NBNC75BLP9 | | NBNB75GLP9 | 1.07 | 1.6 | 6.47 | ● | - | - | - |
| Commscope 5765 | NBNC75BTU11X | NBNC75BTU11 | | | 1.07 | 1.6 | 7.36 | ● | - | - | - |
| Commscope 7536 (03-05) | | | NBTC75BXX6 | | | 1.6 | 5.00 | ● | - | - | ● |
| Commscope 7538 | NBNC75BDD6X | NBNC75BDD6 | | | 1.07 | 1.6 | 4.53 | ● | - | - | - |



| | rearTWIST UHD | rearTWIST HD | rearTWIST HD Tiny | Cable Jack & Panel | Pin Crimp in mm | Hex Crimp in mm | Stripping Tool | | | | |
|--------------------------------------|------------------|-----------------|----------------------|-----------------------|--------------------|--------------------|-------------------|-----------|------------|------------|--------------|
| | | | | | UHD | HD | | CS-BNC-RT | CS-BNC-LCS | CS-BNC-LCV | + CS-BNC-TCI |
| Draka Multimedia Cable | | | | | | | | | | | |
| 0.31 / 1.45 AF, 753-1304(2), | | | | | | | | | | | |
| 755-1302 | | | NBTC75BFI4 | NBTB75CFI4 | | 1.6 | 4.06 | ● | - | - | ● |
| 0.41 / 1.9 AF, 753-1104, 755-1103, | | | | | | | | | | | |
| 755-1101 | | | NBTC75BNN5 | NBTB75CNN5 | | 1.6 | 4.53 | ● | - | - | ● |
| 0.51 / 2.3 Dz, 757-1001, VADN 7243 | | | | | | | | | | | |
| | | | NBTC75BVX6 | | | 1.6 | 5.00 | ● | - | - | ● |
| 0.6 / 2.8 AF, 0.6 L / 2.8 AF | NBNC75BFG7X | NBNC75BFG7 | | | 1.07 | 1.6 | 5.00 | ● | - | - | - |
| HD Pro 0.6/2.8 AF | NBNC75BFG7X | NBNC75BFG7 | | | 1.07 | 1.6 | 5.00 | ● | - | - | - |
| 0.6 / 3.7, 0.6L / 3.7 | NBNC75BLP7X | NBNC75BLP7 | | | 1.07 | 1.6 | 6.47 | ● | - | - | - |
| 0.6 / 3.7 Dz | | NBNC75BLS7 | | | | 1.6 | 7.01 | ● | - | - | - |
| 0.8 / 3.7 AF, 755-801(803, 804) | NBNC75BLP9X | NBNC75BLP9 | | NBNB75GLP9 | 1.07 | 1.6 | 6.47 | ● | - | - | - |
| Highflex 08L/3.7D, HD Pro 0.8/3.7 AF | NBNC75BLP9X | NBNC75BLP9 | | | 1.07 | 1.6 | 6.47 | ● | - | - | - |
| 0.8 / 4.9 Dz | | NBNC75BXY9 | | | | 1.6 | 8.23 | ● | - | - | - |
| 1.0 / 4.8 AF, 755-901/5 | NBNC75BUU11X | NBNC75BUU11 | | NBNB75GUU11 | 1.07 | 1.6 | 7.36 | ● | - | - | - |
| 1.2L / 4.8Dz, 1.2L / 4.95AF | | NBNC75BWU13 | | | | 1.6 | 7.36 | ● | - | - | - |
| 1.4 / 6.6 AF | | NBLC75BSX14 | | | | 1.75 | 9.73 | - | ● | - | - |
| 1.6 / 7.3AF | | NBLC75BVZ17 | | | | 1.8 | 10.00 | - | - | ● | - |
| Suhner | | | | | | | | | | | |
| Suhner G02233 | | | NBTC75BFI4 | NBTB75CFI4 | | 1.6 | 4.06 | ● | - | - | ● |
| Suhner G04233D | | NBNC75BLS7 | | | | 1.6 | 7.01 | ● | - | - | - |
| Suhner S02223 | | | NBTC75BLI4 | | | 1.6 | 4.06 | ● | - | - | ● |
| Suhner S04233, S04263 | NBNC75BLP9X | NBNC75BLP9 | | NBNB75GLP9 | 1.07 | 1.6 | 6.47 | ● | - | - | - |
| Suhner S05133-07 | NBNC75BTU11X | NBNC75BTU11 | | | 1.07 | 1.6 | 7.36 | ● | - | - | - |
| Suhner S05163-02 | NBNC75BTU11X | NBNC75BTU11 | | | 1.07 | 1.6 | 7.36 | ● | - | - | - |
| Percon | | | | | | | | | | | |
| Percon VK2 | | | NBTC75BNN5 | | | 1.6 | 4.53 | ● | - | - | ● |
| Percon VK5 | NBNC75BFG7X | NBNC75BFG7 | | | 1.07 | 1.6 | 5.00 | ● | - | - | - |
| Percon VK6 | NBNC75BLP9X | NBNC75BLP9 | | | 1.07 | 1.6 | 6.47 | ● | - | - | - |
| Percon VK7 | NBNC75BUU11X | NBNC75BUU11 | | | 1.07 | 1.6 | 7.36 | ● | - | - | - |
| Percon VK77 | NBNC75BTU11X | NBNC75BTU11 | | | 1.07 | 1.6 | 7.36 | ● | - | - | - |
| Percon VK770F | | NBNC75BWU13 | | | | 1.6 | 7.36 | ● | - | - | - |
| Percon VK8 | | NBLC75BSX14 | | | | 1.75 | 9.73 | - | ● | - | - |
| Percon VK9 | | NBLC75BVZ17 | | | | 1.8 | 10.0 | - | - | ● | - |
| Percon VK95 | NBNC75BLP7X | NBNC75BLP7 | | | 1.07 | 1.6 | 6.47 | ● | - | - | - |
| Van Damme | | | | | | | | | | | |
| Van Damme 268-175-000 | NBNC75BUU11X | NBNC75BUU11 | | | 1.07 | 1.6 | 7.36 | ● | - | - | - |
| Van Damme 268-275-000 | NBNC75BJP9X | NBNC75BJP9 | | | 1.07 | 1.6 | 6.47 | ● | - | - | - |
| Van Damme 268-306-000 | NBNC75BLP9X | NBNC75BLP9 | | | 1.07 | 1.6 | 6.47 | ● | - | - | - |
| Van Damme 268-408-000 | | | NBTC75BFI14 | | | 1.6 | 6.47 | ● | - | - | ● |
| Van Damme 268-475-000 | NBNC75BTU11X | NBNC75BTU11 | | | 1.07 | 1.6 | 7.36 | ● | - | - | - |
| Van Damme 268-675-000 | NBNC75BTU11X | NBNC75BTU11 | | | 1.07 | 1.6 | 7.36 | ● | - | - | - |
| Van Damme 278-475-000 | | NBLC75BVZ17 | | | | 1.8 | 10.00 | - | - | ● | - |
| Van Damme 278-175-000 | NBNC75BUU11X | NBNC75BUU11 | | | 1.07 | 1.6 | 7.36 | ● | - | - | - |
| Van Damme 278-975-000 | NBNC75BLP9X | NBNC75BLP9 | | | 1.07 | 1.6 | 6.47 | ● | - | - | - |
| Van Damme 278-775-000 | | | NBTC75BSS5 | | | 1.6 | 4.53 | ● | - | - | ● |
| Van Damme 278-075-000 | NBNC75BFG7X | NBNC75BFG7 | | | 1.07 | 1.6 | 5.00 | ● | - | - | - |
| Van Damme 278-075-006 | NBNC75BFG7X | NBNC75BFG7 | | | 1.07 | 1.6 | 5.00 | ● | - | - | - |
| Van Damme 278-375-000 | NBNC75BUU11X | NBNC75BUU11 | | | 1.07 | 1.6 | 7.36 | ● | - | - | - |

| | rearTWIST UHD | rearTWIST HD | rearTWIST HD Tiny | Cable Jack & Panel | Pin Crimp in mm | Hex Crimp in mm | Stripping Tool | | | | |
|---------------------------------------|------------------|-----------------|----------------------|-----------------------|--------------------|--------------------|-------------------|-----------|------------|------------|--------------|
| | | | | | UHD | HD | | CS-BNC-RT | CS-BNC-LCS | CS-BNC-LCV | + CS-BNC-TCI |
| Argosy Image | | | | | | | | | | | |
| Argosy Image 360 | NBNC75BFG7X | NBNC75BFG7 | | | 1.07 | 1.6 | 5.00 | • | - | - | - |
| Argosy Image 720 | NBNC75BLP9X | NBNC75BLP9 | | | 1.07 | 1.6 | 6.47 | • | - | - | - |
| Argosy Image 1000 | NBNC75BUU11X | NBNC75BUU11 | | NBNB75GUU11 | 1.07 | 1.6 | 7.36 | • | - | - | - |
| CAE | | | | | | | | | | | |
| CAE MC75 | | | NBTC75BLI5 | NBTB75CLI5 | | 1.6 | 4.06 | • | - | - | • |
| CAE MC75.39 | | | NBTC75BVX6 | | | 1.6 | 5.00 | • | - | - | • |
| CAE KX6A | NBNC75BLP7X | NBNC75BLP7 | | | 1.07 | 1.6 | 6.47 | • | - | - | - |
| CAE VCB75 | | NBNC75BNP9 | | | | 1.6 | 6.47 | • | - | - | - |
| CAE VCB 100 | | NBNC75BXU13 | | | | 1.6 | 7.36 | • | - | - | - |
| CAE HD1250FLEX | | NBNC75BXU13 | | | | 1.6 | 7.01 | • | - | - | - |
| CAE HD10460LSZH | | NBNC75BTS11 | | | | 1.6 | 7.01 | • | - | - | - |
| CAE HD0628LSZH | NBNC75BFG7X | NBNC75BFG7 | | | 1.07 | 1.6 | 5.00 | • | - | - | - |
| CAE HD08370LSZH | NBNC75BLP9X | NBNC75BLP9 | | | 1.07 | 1.6 | 6.47 | • | - | - | - |
| CAE HD16720LSZH | | NBNC75BVZ17 | | | | 1.8 | 10.00 | - | - | • | - |
| Cordial | | | | | | | | | | | |
| Cordial CVI 3-7 | NBNC75BFG7X | NBNC75BFG7 | | | 1.07 | 1.6 | 4.53 | • | - | - | - |
| Cordial CVI 06-28 | NBNC75BFG7X | NBNC75BFG7 | | | 1.07 | 1.6 | 5.00 | • | - | - | - |
| Cordial CVI 06-28HD, CVI 06-28HD-FRNC | NBNC75BFG7X | NBNC75BFG7 | | | 1.07 | 1.6 | 5.00 | • | - | - | - |
| Cordial CVI (CVM) 06-37 | NBNC75BLP7X | NBNC75BLP7 | | | 1.07 | 1.6 | 6.47 | • | - | - | - |
| Cordial CVI 08-37 HD-FRNC | | NBNC75BNP9 | | | | 1.6 | 6.47 | • | - | - | - |
| Cordial CVI 10-48 HD | NBNC75BUU11X | NBNC75BUU11 | | | 1.07 | 1.6 | 7.36 | • | - | - | - |
| Cordial CVI 10-48 HD-FRNC | | NBNC75BWS11 | | | | 1.6 | 7.01 | • | - | - | - |
| Cordial CVM 08-32 HD-FLEX | | NBNC75BUJ9 | | | | 1.6 | 5.41 | • | - | - | - |
| Cordial CVM 12-50 HD-FLEX | | NBNC75BWU13 | | | | 1.6 | 7.36 | • | - | - | - |
| Kabeltronik | | | | | | | | | | | |
| Kabeltronik HFV 1.0/4.8 AF-FRNC | | NBNC75BRU11 | | | | 1.6 | 7.36 | • | - | - | - |
| Kabeltronik HFV 0.6/2.8 AF-FRNC | NBNC75BFG7X | NBNC75BFG7 | | | 1.07 | 1.6 | 5.00 | • | - | - | - |
| Kabeltronik MVP 5x 0.6/2.8 AF-FRNC | NBNC75BFG7X | NBNC75BFG7 | | | 1.07 | 1.6 | 5.00 | • | - | - | - |
| KLOTZ | | | | | | | | | | | |
| KLOTZ V06/28, V062SH, VMXx75Y | NBNC75BFG7X | NBNC75BFG7 | | | 1.07 | 1.6 | 5.00 | • | - | - | - |
| KLOTZ V06/37 | NBNC75BLP7X | NBNC75BLP7 | | | 1.07 | 1.6 | 6.47 | • | - | - | - |
| KLOTZ V08/37H, VD0835H | NBNC75BLP9X | NBNC75BLP9 | | | 1.07 | 1.6 | 6.47 | • | - | - | - |
| KLOTZ VD083LP 0.8L/3.7DZ | NBNC75BJP9X | NBNC75BJP9 | | | 1.07 | 1.6 | 6.47 | • | - | - | - |
| KLOTZ V10/48, V10/48H | NBNC75BUU11X | NBNC75BUU11 | | NBNB75GUU11 | 1.07 | 1.6 | 7.36 | • | - | - | - |
| KLOTZ V16/72 | | NBNC75BVZ17 | | | | 1.8 | 10.00 | - | - | • | - |
| Nexans | | | | | | | | | | | |
| Nexans HF 75 0.6/2.9 02YS(ST)CH | NBNC75BFG7X | NBNC75BFG7 | | | 1.07 | 1.6 | 5.00 | • | - | - | - |
| Nexans HF 75 1.6/7.2 02Y(ST)C(ST)H | | NBNC75BVZ17 | | | | 1.8 | 10.00 | - | - | • | - |
| Nexans HF 75 0.6/3.7 2YCY | NBNC75BLP7X | NBNC75BLP7 | | | 1.07 | 1.6 | 6.47 | • | - | - | - |
| Proel | | | | | | | | | | | |
| Proel HPC 805 | NBNC75BLP7X | NBNC75BLP7 | | | 1.07 | 1.6 | 6.47 | • | - | - | - |
| Proel HPC 810 | NBNC75BLP9X | NBNC75BLP9 | | | 1.07 | 1.6 | 6.47 | • | - | - | - |
| Proel HPC 820 | | NBNC75BFH6 | | | | 1.6 | 5.00 | • | - | - | - |
| RG | | | | | | | | | | | |
| RG11 | | NBNC75BVZ17 | | | | 1.8 | 10.00 | - | - | • | - |
| RG59B/U | NBNC75BLP7X | NBNC75BLP7 | | | 1.07 | 1.6 | 6.47 | • | - | - | - |
| RG179B/U | | NBTC75BLI4 | | | | 1.6 | 4.06 | • | - | - | • |
| SOMMER | | | | | | | | | | | |
| SOMMER 600-0051 (M/L/S) | NBNC75BLP7X | NBNC75BLP7 | | | 1.07 | 1.6 | 6.47 | • | - | - | - |
| SOMMER 600-0054 (M/L/S) | NBNC75BLP7X | NBNC75BLP7 | | | 1.07 | 1.6 | 6.47 | • | - | - | - |
| SOMMER 600-0101M | NBNC75BFG7X | NBNC75BFG7 | | | 1.07 | 1.6 | 5.00 | • | - | - | - |
| SOMMER 600-0104M | NBNC75BFG7X | NBNC75BFG7 | | | 1.07 | 1.6 | 5.00 | • | - | - | - |
| SOMMER 600-162(F), Vector 0.8/3.7 | NBNC75BLP9X | NBNC75BLP9 | | | 1.07 | 1.6 | 6.47 | • | - | - | - |
| SOMMER 600-025* -03 (05) | | | NBTC75BLI5 | NBTB75CLI5 | | 1.6 | 4.06 | • | - | - | • |
| SOMMER 600-0701 | | | NBTC75BLI5 | NBTB75CLI5 | | 1.6 | 4.06 | • | - | - | • |
| SOMMER 600-020* -03 (05) | | | NBTC75BLI5 | NBTB75CLI5 | | 1.6 | 4.06 | • | - | - | • |
| SOMMER 600-0451 | NBNC75BLP9X | NBNC75BLP9 | | | 1.07 | 1.6 | 6.47 | • | - | - | - |
| SOMMER 600-0751 | | | NBTC75BVX6 | NBNB75GLP9 | | 1.6 | 5.00 | • | - | - | • |
| Tesca | | | | | | | | | | | |
| Tesca Bengal | | | NBTC75BNS4 | | | 1.6 | 4.53 | • | - | - | • |
| Tesca Supra | NBNC75BFG7X | NBNC75BFG7 | | | 1.07 | 1.6 | 5.00 | • | - | - | - |
| Tesca Massimo | | NBNC75BSX14 | | | | 1.75 | 9.73 | - | • | - | - |
| Tesca Sphere | | NBNC75BVZ17 | | | | 1.8 | 10.00 | - | - | • | - |
| Tesca Presto | | NBNC75BJP9 | | | | 1.6 | 6.47 | • | - | - | - |
| Tesca Prima | | NBNC75BTS11 | | | | 1.6 | 7.01 | • | - | - | - |
| Tesca Linea | | NBNC75BNP9 | | | | 1.6 | 6.47 | • | - | - | - |
| Tesca Vostok | | NBNC75BWS12 | | | | 1.6 | 7.01 | • | - | - | - |
| Tesca Dublo | | NBNC75BWS12 | | | | 1.6 | 7.01 | • | - | - | - |
| Others | | | | | | | | | | | |
| AT&T 735 | | | NBTC75BSS5 | | | 1.6 | 4.53 | • | - | - | • |
| COMM-TEC RGBHV | | | NBTC75BSS5 | | | 1.6 | 4.53 | • | - | - | • |
| BBC PSF 1/3* | | NBNC75BLS7 | | | | 1.6 | 7.01 | • | - | - | • |
| Bryant BD 5D50 | | NBNC75BRS9 | | | | 1.6 | 7.01 | • | - | - | • |
| Bryant BD 5D53F | NBNC75BJP9X | NBNC75BJP9 | | | 1.07 | 1.6 | 6.47 | • | - | - | - |
| Bryant SD10F, SD11 | NBNC75BTU11X | NBNC75BTU11 | | | 1.07 | 1.6 | 7.36 | • | - | - | - |
| Bryant SD50F | NBNC75BLP9X | NBNC75BLP9 | | | 1.07 | 1.6 | 6.47 | • | - | - | - |
| COVID CVD 1300-1500 | | | NBTC75BLI5 | NBTB75CLI5 | | 1.6 | 4.06 | • | - | - | • |
| Eupen 705 CRT 5V-HS | | NBNC75BTS11 | | | | 1.6 | 7.36 | • | - | - | - |
| Extron BNC-5HR | | | NBTC75BNN5 | NBTB75CNN5 | | 1.6 | 4.53 | • | - | - | • |
| Extron BNC-5RC | NBNC75BFG7X | NBNC75BFG7 | | | 1.07 | 1.6 | 5.00 | • | - | - | - |
| GEPCO VDM230 | NBNC75BDD6X | NBNC75BDD6 | | | 1.07 | 1.6 | 4.53 | • | - | - | - |
| GEPCO VPM2000 | NBNC75BLP9X | NBNC75BLP9 | | NBNB75GLP9 | 1.07 | 1.6 | 6.47 | • | - | - | - |
| GEPCO VSD2001 | NBNC75BTU11X | NBNC75BTU11 | | | 1.07 | 1.6 | 7.36 | • | - | - | - |
| Helix 734 | | NBNC75BNP9 | | | | 1.6 | 6.47 | • | - | - | - |
| Helix 735 | | | NBTC75BSS5 | | | 1.6 | 4.53 | • | - | - | • |
| Hirschmann KOKA 712Cu | | NBNC75BTS9 | | | | 1.6 | 6.47 | • | - | - | - |
| Kansai 3C-5S | | NBNC75BFH6 | | | | 1.6 | 5.00 | • | - | - | - |
| Kelsey SD-1 | NBNC75BFG7X | NBNC75BFG7 | | | 1.07 | 1.6 | 5.00 | • | - | - | - |
| Kelsey SD-1-LL | | NBNC75BWS11 | | | | 1.6 | 7.01 | • | - | - | - |
| KROSCHU (341 270, 341 280) | | | | NBTC75BLI4 | | 1.6 | 4.06 | • | - | - | • |
| Quadtronics CABPGHD70MW-500 | | NBNC75BFG7 | | | 1.07 | 1.6 | 5.00 | • | - | - | - |
| Wisj MK 99A | | | NBNC75BWS12 | | | 1.6 | 6.47 | • | - | - | - |
| ZNK CM14B | | | NBTC75BFI4 | NBTB75CFI4 | | 1.6 | 4.06 | • | - | - | • |

* Registered trademark of BBC



| | Inner Conductor | Insulator | Cable O.D. mm | Pin crimp mm (square) | Hex Crimp mm | Stripping Tool | | | |
|--|-----------------|-----------|---------------|-----------------------|--------------|----------------|------------|------------|--------------|
| | | | | | | CS-BNC-RT | CS-BNC-LCS | CS-BNC-LCV | + CS-BNC-TCI |

rearTWIST HD & UHD

| | | | | | | | | | |
|---------------|-------|-------|--------|-------------------|-------|---|---|---|---|
| NBLC75BVZ17 | < 1.7 | < 8.0 | < 10.4 | 1.80 (Hex crimp) | 10.00 | - | - | ● | - |
| NBLC75BSX14 | < 1.4 | < 6.6 | < 9.5 | 1.75 (Hex crimp) | 9.73 | - | ● | - | - |
| NBNC75BDD6 | < 0.6 | < 2.8 | < 4.3 | 1.6 | 4.53 | ● | - | - | - |
| NBNC75BDD6X | < 0.6 | < 2.8 | < 4.3 | 1.07 | 4.53 | ● | - | - | - |
| NBNC75BFG7 | < 0.7 | < 3.1 | < 4.7 | 1.6 | 5.00 | ● | - | - | - |
| NBNC75BFG7X | < 0.7 | < 3.1 | < 4.7 | 1.07 | 5.00 | ● | - | - | - |
| NBNC75BFH6 | < 0.6 | < 3.1 | < 4.9 | 1.6 | 5.00 | ● | - | - | - |
| NBNC75BGG7 | < 0.7 | < 3.2 | < 4.7 | 1.6 | 5.00 | ● | - | - | - |
| NBNC75BHK7 | < 0.7 | < 3.3 | < 5.6 | 1.6 (or 1.75 Hex) | 5.41 | ● | - | - | - |
| NBNC75BIJ9 | < 0.9 | < 3.6 | < 5.3 | 1.6 | 5.41 | ● | - | - | - |
| NBNC75BJJ9 | < 0.9 | < 3.8 | < 5.3 | 1.6 | 5.41 | ● | - | - | - |
| NBNC75BJP9 | < 0.9 | < 3.8 | < 6.3 | 1.6 | 6.47 | ● | - | - | - |
| NBNC75BJP9X | < 0.9 | < 3.8 | < 6.3 | 1.07 | 6.47 | ● | - | - | - |
| NBNC75BLP7 | < 0.7 | < 3.8 | < 6.3 | 1.6 | 6.47 | ● | - | - | - |
| NBNC75BLP7X | < 0.7 | < 3.8 | < 6.3 | 1.07 | 6.47 | ● | - | - | - |
| NBNC75BLP9 | < 0.9 | < 3.8 | < 6.3 | 1.6 | 6.47 | ● | - | - | - |
| NBNC75BLP9X | < 0.9 | < 3.8 | < 6.3 | 1.07 | 6.47 | ● | - | - | - |
| NBNC75BLS7 | < 0.7 | < 3.8 | < 6.9 | 1.6 | 7.01 | ● | - | - | - |
| NBNC75BNP9 | < 0.9 | < 4.1 | < 6.3 | 1.6 | 6.47 | ● | - | - | - |
| NBNC75BQP11 | < 1.1 | < 4.5 | < 6.3 | 1.6 | 6.47 | ● | - | - | - |
| NBNC75BQP11X | < 1.1 | < 4.5 | < 6.3 | 1.07 | 6.47 | ● | - | - | - |
| NBNC75BRS9 | < 0.9 | < 4.8 | < 6.9 | 1.6 | 7.01 | ● | - | - | - |
| NBNC75BTS9 | < 0.9 | < 4.7 | < 6.9 | 1.6 | 7.01 | ● | - | - | - |
| NBNC75BTS11 | < 1.1 | < 4.7 | < 6.9 | 1.6 | 7.01 | ● | - | - | - |
| NBNC75BTU11 | < 1.1 | < 4.7 | < 7.3 | 1.6 | 7.36 | ● | - | - | - |
| NBNC75BTU11X | < 1.1 | < 4.7 | < 7.3 | 1.07 | 7.36 | ● | - | - | - |
| NBNC75BTUP11X | < 1.1 | < 4.7 | < 7.3 | 1.07 | 7.06 | ● | - | - | - |
| NBNC75BTU13 | < 1.3 | < 4.7 | < 7.3 | 1.6 | 7.36 | ● | - | - | - |
| NBNC75BUU11 | < 1.1 | < 4.9 | < 7.3 | 1.6 | 7.36 | ● | - | - | - |
| NBNC75BUU11X | < 1.1 | < 4.9 | < 7.3 | 1.07 | 7.36 | ● | - | - | - |
| NBNC75BRU11 | < 1.1 | < 4.7 | < 7.3 | 1.6 | 7.36 | ● | - | - | - |
| NBNC75BWS11 | < 1.1 | < 5.1 | < 6.9 | 1.6 | 7.01 | ● | - | - | - |
| NBNC75BWS12 | < 1.2 | < 5.1 | < 6.9 | 1.6 | 7.01 | ● | - | - | - |
| NBNC75BWU13 | < 1.4 | < 5.1 | < 7.3 | 1.6 | 7.36 | ● | - | - | - |
| NBNC75BXU13 | < 1.4 | < 5.3 | < 7.3 | 1.6 | 7.36 | ● | - | - | - |
| NBNC75BXY9 | < 0.9 | < 5.3 | < 8.0 | 1.6 | 8.23 | ● | - | - | - |
| NBNC75BYY9 | < 0.9 | < 5.2 | < 8.0 | 1.6 | 8.23 | ● | - | - | - |
| NBNC75BYY11 | < 1.1 | < 5.2 | < 8.0 | 1.6 | 8.23 | ● | - | - | - |
| NBNC75BZV14 | < 1.4 | < 5.2 | < 8.0 | 1.6 (or 1.75 Hex) | 8.23 | ● | - | - | - |

rearTWIST TINY

| | | | | | | | | | |
|------------|-------|-------|-------|-----|------|---|---|---|---|
| NBTC75BFI4 | < 0.4 | < 1.6 | < 2.9 | 1.6 | 4.06 | ● | - | - | ● |
| NBTC75BLI4 | < 0.4 | < 1.8 | < 2.9 | 1.6 | 4.06 | ● | - | - | ● |
| NBTC75BLI5 | < 0.5 | < 1.8 | < 2.9 | 1.6 | 4.06 | ● | - | - | ● |
| NBTC75BNN5 | < 0.5 | < 2.0 | < 3.1 | 1.6 | 4.53 | ● | - | - | ● |
| NBTC75BNS4 | < 0.4 | < 2.0 | < 3.5 | 1.6 | 4.53 | ● | - | - | ● |
| NBTC75BSS5 | < 0.5 | < 2.3 | < 3.4 | 1.6 | 4.53 | ● | - | - | ● |
| NBTC75BVV5 | < 0.5 | < 2.5 | < 3.8 | 1.6 | 5.00 | ● | - | - | ● |
| NBTC75BVX6 | < 0.6 | < 2.5 | < 4.0 | 1.6 | 5.00 | ● | - | - | ● |
| NBTC75BXX5 | < 0.5 | < 2.6 | < 4.0 | 1.6 | 5.00 | ● | - | - | ● |
| NBTC75BXX6 | < 0.6 | < 2.6 | < 4.0 | 1.6 | 5.00 | ● | - | - | ● |

CABLE JACKS (TINY & PANEL VERSION)

| | | | | | | | | | |
|-------------|-------|-------|-------|-----|------|---|---|---|---|
| NBTB75CFI4 | < 0.4 | < 1.6 | < 2.9 | 1.6 | 4.06 | ● | - | - | ● |
| NBTB75CNN5 | < 0.5 | < 2.0 | < 3.1 | 1.6 | 4.53 | ● | - | - | ● |
| NBTB75CLI5 | < 0.5 | < 1.8 | < 2.9 | 1.6 | 4.06 | ● | - | - | ● |
| NBNB75GLP9 | < 0.9 | < 3.8 | < 6.3 | 1.6 | 6.47 | ● | - | - | ● |
| NBNB75GUU11 | < 1.1 | < 4.9 | < 7.3 | 1.6 | 7.36 | ● | - | - | ● |
| NBNB75ILP9 | < 0.9 | < 3.8 | < 6.3 | 1.6 | 6.47 | ● | - | - | ● |
| NBNB75IUU11 | < 1.1 | < 4.9 | < 7.3 | 1.6 | 7.36 | ● | - | - | ● |



D-shape metal housing



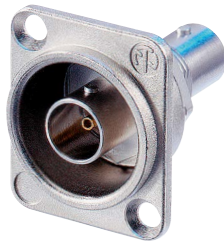
Gold plated center pin



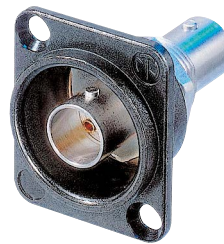
HD BNC Chassis & Cable Jacks Panel Version



Bulkhead Jacks - NBB75FG



NBB75DFG



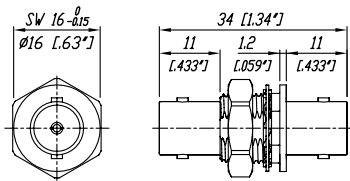
NBB75DFGB



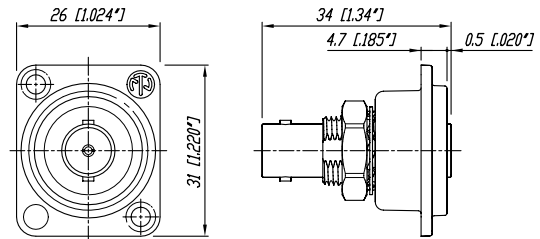
Cable jacks Panel Version – NBB75SI

- True 75 Ω design meets the stringent HDTV / DVD requirements
- Isolated or grounded versions
- “D” shaped housing (provides flush mounting and protection of the jacks from damage) or single feed through mountings
- Gold plated center contact

NBB75FI



NBB75DFG



Ordering Information

| Nickel housing | Black housing | Antralo housing | |
|----------------|---------------|-----------------|---|
| NBB75DFG | NBB75DFGB | | Bulkhead jack, D-shape housing, feed through, grounded |
| | | NBB75DFGX | Bulkhead jack, D-shape housing, feed through, grounded, UHD-optimized |
| NBB75DFI | NBB75DFIB | | Bulkhead jack, D-shape housing, feed through, isolated |
| | | NBB75DFIX | Bulkhead jack, D-shape housing, feed through, isolated, UHD-optimized |
| NBB75DSG | NBB75DSGB | | Bulkhead jack, D-shape housing, solder version, grounded |
| NBB75DSI | NBB75DSIB | | Bulkhead jack, D-shape housing, solder version, isolated |
| NBB75FG | | | Bulkhead jack, feed through, grounded |
| NBB75FI | | | Bulkhead jack, feed through, isolated |
| NBB75SI | | | Bulkhead jack, solder version, including isolation washers |
| NBB75FA | | | Coupler, feed through |

| Specifications | rearTWIST UHD | rearTWIST HD & rearTWIST HD Large & Cable Jack Panel | rearTWIST HD Tiny & Cable Jack Tiny | Bulkheads & Coupler |
|----------------|------------------|---|---|---------------------------|
|----------------|------------------|---|---|---------------------------|

| Electrical | | | | | |
|---------------------------------|------------------------------------|------------------------------------|---|-----------------------------------|-----------------------------------|
| Impedance | 75 Ω | ● | ● | ● | ● |
| Rated voltage | 500 V ac rms | ● | ● | 250 V ac rms | ● |
| Insulation resistance | > 5 G Ω | ● | ● | ● | ● |
| Dielectric withstanding voltage | 1'500 V ac rms | ● | ● | 750 V ac rms | ● |
| VSWR / Return Loss | $\leq 1.050 / > 32$ dB up to 1 GHz | $\leq 1.06 / > 30$ dB up to 6 GHz | ● | $\leq 1.10 / > 26$ dB up to 1 GHz | $\leq 1.03 / > 37$ dB up to 1 GHz |
| | $\leq 1.065 / > 30$ dB up to 2 GHz | $\leq 1.13 / > 24$ dB up to 12 GHz | ● | $\leq 1.14 / > 24$ dB up to 2 GHz | $\leq 1.05 / > 32$ dB up to 2 GHz |
| | $\leq 1.100 / > 26$ dB up to 3 GHz | $\leq 1.22 / > 20$ dB up to 18 GHz | ● | $\leq 1.22 / > 20$ dB up to 3 GHz | $\leq 1.08 / > 28$ dB up to 3 GHz |
| Inner contact resistance | ≤ 3 m Ω (initial) | ● | ● | ● | ● |
| Outer contact resistance | ≤ 2 m Ω (initial) | ● | ● | ● | ● |

| Mechanical | | | | | |
|--------------------------|---------------------|-----------|-----------|-----------|-------|
| Cable anchoring | Jacket crimping | ● | ● | ● | N / A |
| Cable O.D. range | mm | 4.3 - 7.3 | 4.0 - 7.7 | 2.5 - 3.8 | N / A |
| | - Rear Twist Large | mm | - | 10.3 | - |
| Center contact retention | > 30 N | ● | ● | ● | - |
| Engagement force | < 25 N | ● | ● | ● | ● |
| Lifetime | 1'000 mating cycles | ● | ● | ● | ● |

| Material | | | | | |
|------------------|--|-------|-------|-------|---------|
| Shell | Brass (CuZn39Pb3) | ● | ● | ● | ● |
| | Optalloy coated | - | ● | ● | ● |
| | Anraloy coated | ● | - | - | - |
| | PA6 (Push Pull only) | - | N / A | N / A | N / A |
| D-Shape housing: | Zinc diecast (ZnAl4Cu1) gal Ni or black Cr platin | N / A | N / A | N / A | NBB75D* |
| | Anraloy coated | ● | - | - | - |
| Ground contact | Bronze (CuSn6) | ● | ● | ● | - |
| | 0.2 μ m AuCo over 2 μ m NiP15 | ● | ● | ● | - |
| | Brass (CuZn39Pb3) | - | - | - | ● |
| | OPTALLOY coated | - | - | - | ● |
| Center contact | Brass (CuZn35Pb2) | ● | ● | ● | - |
| | 0.2 μ m AuCo or | ● | ● | ● | - |
| | Brass (CuZn39Pb3) | - | - | - | ● |
| | 0.2 μ m AuCo | - | - | - | ● |
| Insulator | Teflon PTFE | - | ● | ● | ● |
| | Polypropylen PP | ● | - | - | - |
| Chuck | Polyacetal POM | N / A | N / A | N / A | N / A |
| Insulation Shell | Polyacetal POM | N / A | N / A | N / A | ● |

| Environmental | | | | | |
|-------------------------------|---------------------------|---|---|---|-------|
| Temperature range | -30 °C to +85 °C | ● | ● | ● | ● |
| Solderability complies with | IEC 68-2-20 | ● | ● | ● | N / A |
| Contact crimpability complies | IEC 60803 and IEC 60352-2 | ● | ● | ● | N / A |

Colour Coded Accessories and Seals



BST-BNC-*



DSS-*



SCF



SCDX



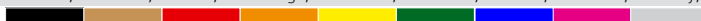
SCCD-W



SCDP-*

| | |
|-----------|--|
| BST-BNC-* | Standard boot for the rearTWIST BNCs in black, 9 different colors available |
| DSS-* | Lettering plate for D Shape bulkheads. |
| SCF | Rubber sealing cover to protect the connector against dust and moisture |
| SCDP-* | D-Size sealing gaskets, color coding (*: 0- black, 2- red, 4- yellow, 5- green, 6- blue, 9- white) |
| SCDX | Hinged cover seals D-size chassis connectors, IP 42 rated |
| SCCD-W | Spring-loaded cover to seals for D-size chassis connectors, IP 65 rated |
| NZP1RU-8 | Panel 1RU housing for 8 D-shape cutouts |
| NZP1RU-12 | Panel 1RU housing for 12 D-shape cutouts |

*: 0 - Black, 1 - Brown, 2 - Red, 3 - Orange, 4 - Yellow, 5 - Green, 6 - Blue, 7 - Violet, 8 - Grey, 9 - White



Assembly Tools



CAS-BNC-T



CS-BNC-RT



HX-R-BNC



PT-BNC



DIE-R-BNC-*

| | | | |
|------------|---|-------------|---|
| CAS-BNC-T | BNC tool case equipped with HX-R-BNC, PT-BNC: Plier tool, CS-BNC-RT: Stripping tool | CS-BNC-LCV | Coax cable stripper for cable O.D. > 8 mm (NBLC75BVZ17) |
| CS-BNC-RT | Coax cable stripper for cable O.D. 2.5 – 8 mm | DIE-R-BNC-* | Crimp tool die for pin and shield for HX-R-BNC |
| CS-BNC-LCS | Coax cable stripper for cable O.D. > 8 mm (NBLC75BSX14) | HT-BNC | Spanner tool for the pushPULL BNCs |
| | | HX-R-BNC | Crimp tool, frame |
| | | PT-BNC | BNC pliers tool |

Crimp die assignment for HX-R-BNC

| Crimp die | Hex crimp mm | | | Hex crimp inch | | | Center pin mm (square crimp) |
|-----------|--------------|---|---|----------------|---|---|------------------------------|
| | A | B | C | A | B | C | |

rearTWIST HD BNC

| | | | | | | | |
|---------------|------|------|------|-------|-------|-------|-----|
| DIE-R-BNC-PDC | 6.47 | 4.53 | 4.06 | 0.255 | 0.178 | 0.160 | 1.6 |
| DIE-R-BNC-PG | 6.47 | 5.00 | - | 0.255 | 0.197 | - | 1.6 |
| DIE-R-BNC-PJ | 6.47 | 5.41 | - | 0.255 | 0.213 | - | 1.6 |
| DIE-R-BNC-PS | 6.47 | 7.01 | - | 0.255 | 0.276 | - | 1.6 |
| DIE-R-BNC-PU | 6.47 | 7.36 | - | 0.255 | 0.290 | - | 1.6 |
| DIE-R-BNC-PY | 6.47 | 8.23 | - | 0.255 | 0.324 | - | 1.6 |

| Crimp die | Hex crimp mm | | | Hex crimp inch | | | Center pin mm (square crimp) |
|-----------|--------------|---|---|----------------|---|---|------------------------------|
| | A | B | C | A | B | C | |

| | | | | | | | |
|-----------------|------|------|---|-------|-------|---|------------------|
| DIE-R-BNC-X | 9.73 | - | - | 0.383 | - | - | 1.75 (Hex Crimp) |
| DIE-R-BNC-UG | 7.36 | 5.00 | - | 0.290 | 0.197 | - | 1.6 |
| DIE-R-BNC-ZPLUS | 10.0 | - | - | 0.39 | - | - | 1.8 |

rearTWIST UHD BNC

| | | | | | | | |
|----------------|------|------|------|-------|-------|-------|------|
| DIE-R-BNCX-PDG | 6.47 | 5.00 | 4.53 | 0.255 | 0.197 | 0.178 | 1.07 |
| DIE-R-BNCX-PU | 6.47 | 7.36 | - | 0.255 | 0.290 | - | 1.07 |



Компания «ЭлектроПласт» предлагает заключение долгосрочных отношений при поставках импортных электронных компонентов на взаимовыгодных условиях!

Наши преимущества:

- Оперативные поставки широкого спектра электронных компонентов отечественного и импортного производства напрямую от производителей и с крупнейших мировых складов;
- Поставка более 17-ти миллионов наименований электронных компонентов;
- Поставка сложных, дефицитных, либо снятых с производства позиций;
- Оперативные сроки поставки под заказ (от 5 рабочих дней);
- Экспресс доставка в любую точку России;
- Техническая поддержка проекта, помощь в подборе аналогов, поставка прототипов;
- Система менеджмента качества сертифицирована по Международному стандарту ISO 9001;
- Лицензия ФСБ на осуществление работ с использованием сведений, составляющих государственную тайну;
- Поставка специализированных компонентов (Xilinx, Altera, Analog Devices, Intersil, Interpoint, Microsemi, Aeroflex, Peregrine, Syfer, Eurofarad, Texas Instrument, Miteq, Cobham, E2V, MA-COM, Hittite, Mini-Circuits, General Dynamics и др.);

Помимо этого, одним из направлений компании «ЭлектроПласт» является направление «Источники питания». Мы предлагаем Вам помощь Конструкторского отдела:

- Подбор оптимального решения, техническое обоснование при выборе компонента;
- Подбор аналогов;
- Консультации по применению компонента;
- Поставка образцов и прототипов;
- Техническая поддержка проекта;
- Защита от снятия компонента с производства.



Как с нами связаться

Телефон: 8 (812) 309 58 32 (многоканальный)

Факс: 8 (812) 320-02-42

Электронная почта: org@eplast1.ru

Адрес: 198099, г. Санкт-Петербург, ул. Калинина, дом 2, корпус 4, литера А.