



EVERLIGHT ELECTRONICS CO.,LTD.

# DATA SHEET

PART NO. : A264B/SUR/S530-A3

DATE : 2005/8/26

DEPARTMENT : CHR&D1

REVISION : 2

|   |          |         |          |
|---|----------|---------|----------|
| <b>RECEIVED</b>                                     |          |         |          |
| <input checked="" type="checkbox"/> MASS PRODUCTION |          |         |          |
| <input type="checkbox"/> PRELIMINARY                |          |         |          |
| <input type="checkbox"/> CUSTOMER DESIGN            |          |         |          |
| DEVICE NUMBER : CDAE-026-077                        |          |         |          |
| PAGE : 6  |          |         |          |
| CUSTOMER  | DESIGNER | CHECKER | APPROVER |
|   |          |         |          |

| REV. | DESCRIPTION | RELEASE DATE |
|------|-------------|--------------|
|      |             |              |
|      |             |              |
|      |             |              |
|      |             |              |
|      |             |              |
|      |             |              |

OFFICE: 7C BUILDING, LIAN HUA PORT INDUSTRIAL DISTRICT, LIAN HUA SHAN

BONDED PRICESSING ZONE PAN YU, GUANG ZHU, CHINA

TEL. : (020)84860913,84860914

FAX : (020)84860600

[http : //www.everlight.com](http://www.everlight.com)



# EVERLIGHT ELECTRONICS CO.,LTD.

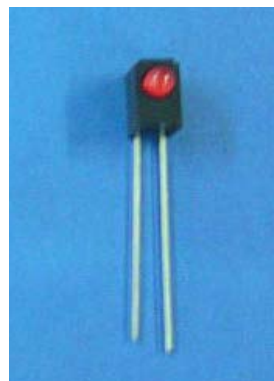
## Technical Data Sheet

### 3.0mm Round Type LED Lamps

#### A264B/SUR/S530-A3

#### ■ Features :

- Low power consumption
- High efficiency and low cost
- Good control and free combinations on the colors of LED lamps
- Good lock and easy to assembly
- Stackable and easy to assembly
- Stackable vertically and easy to assembly
- Versatile mounting on P.C board or panel
- Stackable horizontally and easy to assembly
- Pb free
- The product itself will remain within RoHS compliant version.



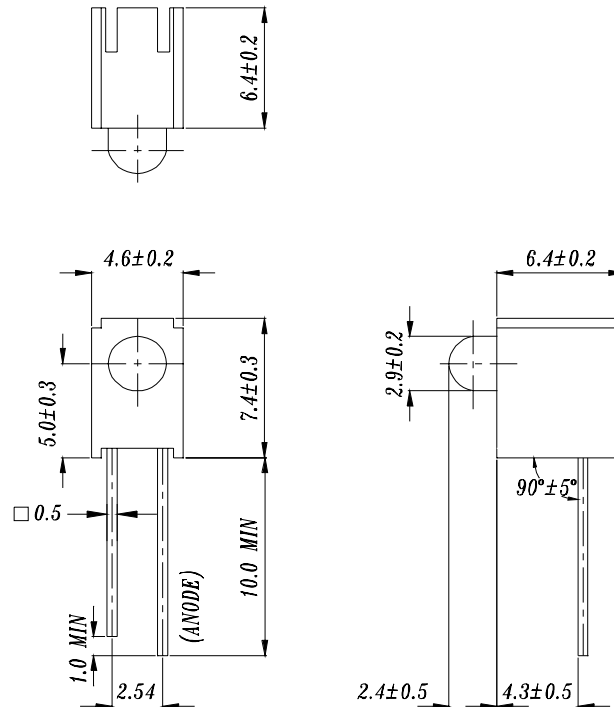
#### ■ Descriptions :

- ARRAY=Plastic Holder+Combinations of Lamps
- The array will easily mount the applicable lamps on any panel up to

#### ■ Applications :

- 1.Used as indicators of indicating the Degree, Functions, Positions etc, in electronic instruments.

| PART NO.           | Chip     |               | Lens Color   |
|--------------------|----------|---------------|--------------|
|                    | Material | Emitted Color |              |
| 264-10SURD/S530-A3 | AlGaInP  | Hyper Red     | Red Diffused |

**Technical Data Sheet**
**3.0mm Round Type LED Lamps**
**A264B/SUR/S530-A3**
**Package Dimensions**


- Notes:** 1.All dimensions are in millimeters, tolerance is 0.25mm except being specified  
 2.Lead spacing is measured where the lead emerge from the package

**Absolute Maximum Ratings at Ta = 25°C**

| Parameter               | Symbol   | Rating      | Unit |
|-------------------------|----------|-------------|------|
| Forward Current         | IF       | 25          | mA   |
| Operating Temperature   | Topr     | -40 to +85  | °C   |
| Storage Temperature     | Tstg     | -40 to +100 | °C   |
| Soldering Temperature   | Tsol     | 260 ± 5     | °C   |
| Electrostatic Discharge | ESD      | 2000        | V    |
| Power Dissipation       | Pd       | 60          | mW   |
| Peak Forward Current    | IF(Peak) | 60          | mA   |
| Reverse Voltage         | VR       | 5           | V    |

Note: \*1:IFP Conditions --Pulse Width  $\leq$  1msec and Duty  $\leq$  1/10.

\*2:Soldering time  $\leq$  5 seconds.



EVERLIGHT ELECTRONICS CO.,LTD.

Technical Data Sheet

3.0mm Round Type LED Lamps

**A264B/SUR/S530-A3**

**Electro-Optical Characteristics (Ta=25°C)**

| Parameter                    | Symbol         | Condition              | Min. | Typ. | Max. | Unit |
|------------------------------|----------------|------------------------|------|------|------|------|
| Forward Voltage              | V <sub>F</sub> | I <sub>F</sub> = 20 mA | /    | 2.0  | 2.4  | V    |
| Reverse Current              | I <sub>R</sub> | V <sub>R</sub> = 5 V   | /    | /    | 10   | μA   |
| Luminous Intensity           | I <sub>v</sub> | I <sub>F</sub> = 20 mA | 63   | 125  | /    | mcd  |
| Viewing Angle                | 2θ 1/2         | I <sub>F</sub> = 20 mA | /    | 60   | /    | deg  |
| Peak Wavelength              | λ <sub>p</sub> | I <sub>F</sub> = 20 mA | /    | 632  | /    | nm   |
| Dominant Wavelength          | λ <sub>d</sub> | I <sub>F</sub> = 20 mA | /    | 624  | /    | nm   |
| Spectrum Radiation Bandwidth | Δλ             | I <sub>F</sub> = 20 mA | /    | 20   | /    | nm   |



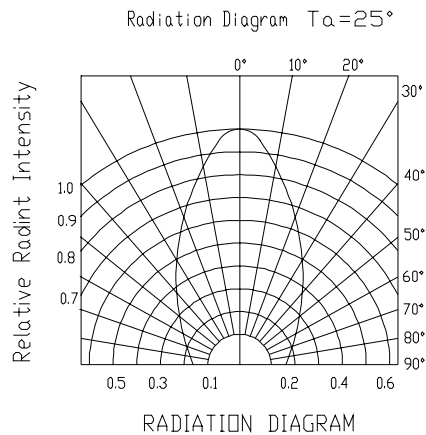
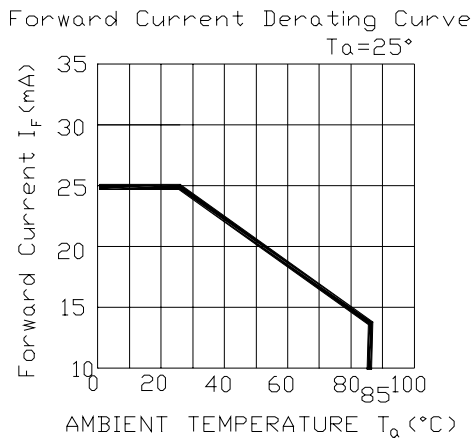
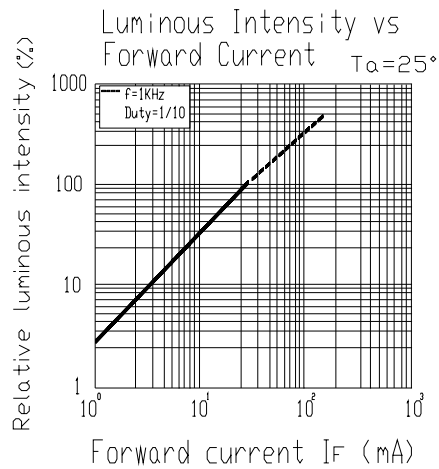
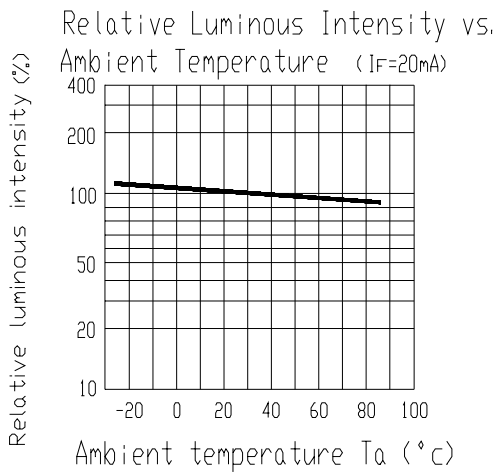
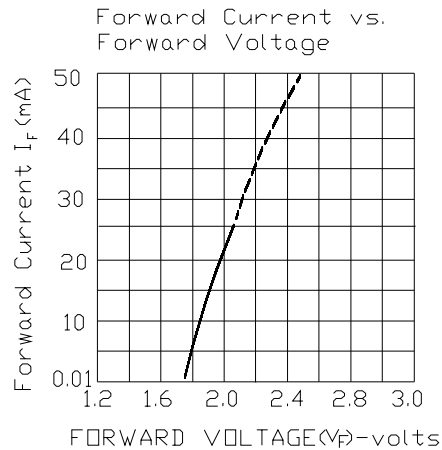
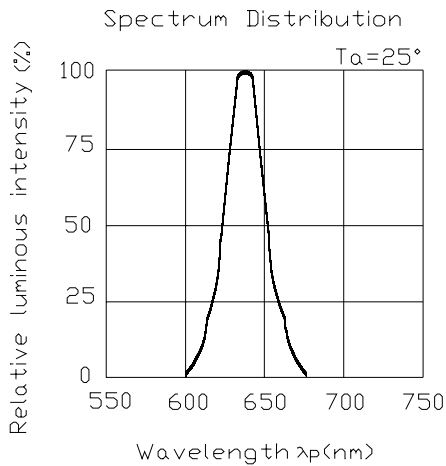
Technical Data Sheet

3.0mm Round Type LED Lamps

**A264B/SUR/S530-A3**

■ Typical Electro-Optical Characteristic Curves:

( SUR )





## Technical Data Sheet

## 3.0mm Round Type LED Lamps

**A264B/SUR/S530-A3**

## ■ Reliability test items and conditions:

| NO | Item                             | Test Conditions                                | Test Hours/Cycle | Sample Size | Ac/Re |
|----|----------------------------------|--|------------------|-------------|-------|
| 1  | Solder Heat                      | TEMP : 260°C ± 5 °C                            | 10 SEC           | 76 PCS      | 0/1   |
| 2  | Temperature Cycle                | H : +100°C 15min<br>∩ 5 min<br>L : -40°C 15min | 300 CYCLES       | 76 PCS      | 0/1   |
| 3  | Thermal Shock                    | H : +100°C 5min<br>∩ 10 sec<br>L : -10°C 5min  | 300 CYCLES       | 76 PCS      | 0/1   |
| 4  | High Temperature Storage         | TEMP : 100°C                                   | 1000 HRS         | 76 PCS      | 0/1   |
| 5  | Low Temperature Storage          | TEMP : -40°C                                   | 1000 HRS         | 76 PCS      | 0/1   |
| 6  | DC Operating Life                | TEMP : 25°C<br>If = 20mA                       | 1000 HRS         | 76 PCS      | 0/1   |
| 7  | High Temperature / High Humidity | 85°C / 85% RH                                  | 1000 HRS         | 76 PCS      | 0/1   |



Technical Data Sheet

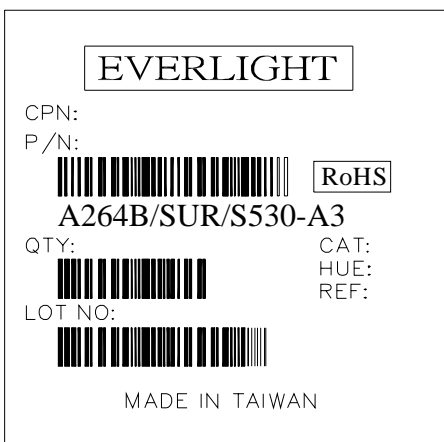
3.0mm Round Type LED Lamps

**A264B/SUR/S530-A3**

Packing Quantity Specification

- 1.500PCS/1Bag , 4Bags/1Box
- 2. 10Boxes/1Carton

Label Form Specification



- CPN: Customer' s Production Number
- P/N : Production Number
- QTY: Packing Quantity
- CAT: Ranks
- HUE: Peak Wavelength
- REF: Reference
- LOT No: Lot Number
- MADE IN TAIWAN: Production Place

Notes

1. Above specification may be changed without notice. EVERLIGHT will reserve authority on material change for above specification.
2. When using this product, please observe the absolute maximum ratings and the instructions for using outlined in these specification sheets. EVERLIGHT assumes no responsibility for any damage resulting from use of the product which does not comply with the absolute maximum ratings and the instructions included in these specification sheets.
3. These specification sheets include materials protected under copyright of EVERLIGHT corporation. Please don' t reproduce or cause anyone to reproduce them without EVERLIGHT' s consent.

|  |   |
|--|---|
| <i>EVERLIGHT ELECTRONICS CO., LTD.</i>               | <i>Tel: (886-2-2267-2000, 2267-9936</i>         |
| <i>Office: No 25, Lane 76, Sec 3, Chung Yang Rd,</i> | <i>Fax: 886-2267-6244, 2267-6189, 2267-6306</i> |
| <i>Tucheng, Taipei 236, Taiwan, R.O.C</i>            | <i>http:\\www.everlight.com</i>                 |



Компания «ЭлектроПласт» предлагает заключение долгосрочных отношений при поставках импортных электронных компонентов на взаимовыгодных условиях!

Наши преимущества:

- Оперативные поставки широкого спектра электронных компонентов отечественного и импортного производства напрямую от производителей и с крупнейших мировых складов;
- Поставка более 17-ти миллионов наименований электронных компонентов;
- Поставка сложных, дефицитных, либо снятых с производства позиций;
- Оперативные сроки поставки под заказ (от 5 рабочих дней);
- Экспресс доставка в любую точку России;
- Техническая поддержка проекта, помощь в подборе аналогов, поставка прототипов;
- Система менеджмента качества сертифицирована по Международному стандарту ISO 9001;
- Лицензия ФСБ на осуществление работ с использованием сведений, составляющих государственную тайну;
- Поставка специализированных компонентов (Xilinx, Altera, Analog Devices, Intersil, Interpoint, Microsemi, Aeroflex, Peregrine, Syfer, Eurofarad, Texas Instrument, Miteq, Cobham, E2V, MA-COM, Hittite, Mini-Circuits, General Dynamics и др.);

Помимо этого, одним из направлений компании «ЭлектроПласт» является направление «Источники питания». Мы предлагаем Вам помощь Конструкторского отдела:

- Подбор оптимального решения, техническое обоснование при выборе компонента;
- Подбор аналогов;
- Консультации по применению компонента;
- Поставка образцов и прототипов;
- Техническая поддержка проекта;
- Защита от снятия компонента с производства.



#### Как с нами связаться

**Телефон:** 8 (812) 309 58 32 (многоканальный)

**Факс:** 8 (812) 320-02-42

**Электронная почта:** [org@eplast1.ru](mailto:org@eplast1.ru)

**Адрес:** 198099, г. Санкт-Петербург, ул. Калинина, дом 2, корпус 4, литера А.