



## US300

### SPECIFICATIONS

- ◆ **OEM and End User**
- ◆ **High Accuracy**
- ◆ **Compact Package**
- ◆ **Wide Temperature Range**

The low cost US300 Series incorporates stainless steel isolation, and provides a wide choice of standard pressure ranges and electrical outputs in a very compact package. This product uses MEAS' UltraStable™ technology that provides stability over a wide temperature range, performance previously available only in much higher priced sensors. The modular design is adaptable to a wide variety of pressure ports and electrical connectors. Standard outputs include 0 to 10mV/V, 0.5 to 4.5V ratiometric, 1 to 5V regulated and 4 to 20mA current loop.

**FEATURES**

- ✦ ±0.1% Accuracy
- ✦ -40°C to +105°C Operating Temperature Range
- ✦ 100% Stainless Steel 316L Isolation
- ✦ Wide Variety of Pressure Ranges and Electrical Outputs
- ✦ Low Cost and Compact Package
- ✦ UltraStable™ Technology

**APPLICATIONS**

- ✦ Refrigeration and HVAC Controls
- ✦ Compressed Gases
- ✦ Process Control
- ✦ Water Pressure Monitoring

**STANDARD RANGES**

Range	psig	psia	Range	Barg	Bara
0 to 015	✦	✦	0 to 001	✦	✦
0 to 030	✦	✦	0 to 002	✦	✦
0 to 050	✦	✦	0 to 3.5	✦	✦
0 to 100	✦	✦	0 to 007	✦	✦
0 to 300	✦	✦	0 to 020	✦	✦
0 to 500	✦	✦	0 to 035	✦	✦
0 to 01k	✦	✦	0 to 070	✦	✦
0 to 03k	✦	✦	0 to 200	✦	✦
0 to 05k	✦	✦	0 to 350	✦	✦

Intermediate ranges available

PERFORMANCE SPECIFICATIONS (AMPLIFIED OUTPUT)

Ambient Temperature: 25°C (unless otherwise specified)

PARAMETERS	MIN	TYP	MAX	UNITS	NOTES
Accuracy (combined non linearity, hysteresis, and repeatability)	-0.15	±0.1	0.15	%Span	FS<1kpsi @25°C
	-0.25	±0.2	0.25	%Span	FS≥1kpsi @25°C
Span Tolerance	-1.0	±0.5	1.0	%Span	@25°C
Zero Offset	-1.0	±0.5	1.0	%Span	@25°C
Temperature Error – Span	-1.5	±0.75	1.5	%Span	
Temperature Error – Offset	-1.5	±0.75	1.5	%Span	
Thermal Hysteresis – Span		±0.05		%Span	
Thermal Hysteresis – Offset		±0.05		%Span	
Long Term Stability – Span		±0.10		%Span/year	
Long Term Stability – Offset		±0.10		%Span/year	
Insulation Resistance (50Vdc)	50			MΩ	
Response Time	1		1	ms	
Proof Pressure			3X	Rated	
Burst Pressure			4X	Rated	
Compensated Temperature	-20		+85	°C	Except cable -20~80°C
Operating Temperature	-40		+105	°C	Except cable -20~80°C
Storage Temperature	-40		+125	°C	Except cable -20~80°C
Media Compatibility	Liquids and gases compatible with 316/316L Stainless Steel				
Vibration	±20g MIL-STD-810C, Procedure 514.2, Figure 514-2, Curve L				
Shock (11ms)	100g 11mS				
Pressure Cycles (Zero to Full Scale)	1 million cycles 0 to full scale				
Environmental Protection	IP67 (Cable Version); IP65 (Packard Version)				

For custom configurations, consult factory.

PERFORMANCE SPECIFICATIONS (mV OUTPUT)

All parameters are measured at 10Vdc drive and at 25°C after 10 sec warm up (unless otherwise specified)

PARAMETERS	MIN	TYP	MAX	UNITS	NOTES
Span	99	100	101	mV	FS≥15psi
	98	100	102	mV	FS≥1kpsi
Zero Pressure Output	-1.0		1.0	mV	
Pressure Non Linearity	-0.10		0.10	%Span	FS≥15psi
	-0.25		0.25	%Span	FS≥1kpsi
Pressure Hysteresis	-0.05	±0.02	0.05	%Span	FS≥15psi
	-0.1		0.1	%Span	FS≥1kpsi
Repeatability		±0.02		%Span	
Input Resistance	6.0	10.0	19.0	kΩ	
Output Resistance	4.0		6.0	kΩ	
Temperature Error – Span	-1.0		1.0	%Span	
Temperature Error – Offset	-1.0		1.0	%Span	
Thermal Hysteresis – Span	-0.25		0.25	%Span	Over -20°~85°C
Thermal Hysteresis – Offset	-0.25		0.25	%Span	FS≤15psi over -20°~85°C
Long Term Stability – Span		±0.10		%Span/year	
Long Term Stability – Offset		±0.10		%Span/year	
Output Load Resistance	5			MΩ	
Insulation Resistance (50VDC)	50			MΩ	At 50 V <sub>DC</sub>
Output Noise (10Hz to 1kHz)		1.0		μV p-p	
Response Time (10% to 90%)			0.1	ms	
Proof Pressure			3X	Rated	
Burst Pressure			4X	Rated	
Compensated Temperature	-20		+85	°C	Except cable -20~80°C
Operating Temperature	-40		+125	°C	Except cable -20~80°C
Storage Temperature	-40		+125	°C	Except cable -20~80°C
Wetted Material	316/316L Stainless steel				
Vibration	±20g MIL-STD-810C, Procedure 514.2, Figure 514-2, Curve L				
Shock	50g, 11 msec half sine hock per ML-STD-202g, Method 213B, Condition A				
Pressure Cycles	1 million cycles 0 to full scale				
Environmental Protection	IP67 (Cable connected with mV version only)				

For custom configurations, consult factory.

DIMENSIONS

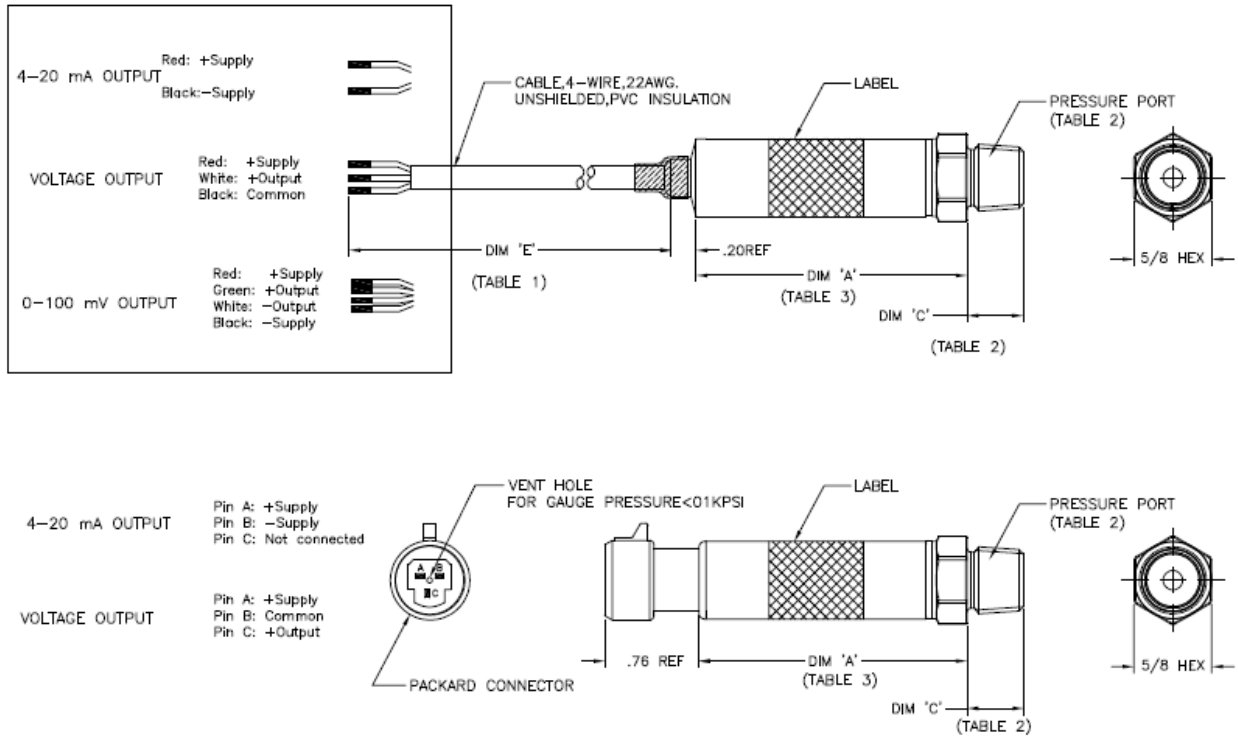


TABLE 1 : CONNECTION

CODE	CONNECTION	DIM 'E'
1	CABLE,BELDEN #8444 2 FEET	24"±1"
2	CABLE,BELDEN #8444 4 FEET	48"±2"
3	CABLE,BELDEN #8444 10 FEET	120"±4"
4	PACKARD CONNECTOR	-

TABLE 2: PRESSURE PORT

CODE	PRESSURE PORT	DIM 'C'
2	1/4-19 BSPP	0.45[11.43]
4	7/16-20 UNF Male SAE J514 Straight Thread Boss O-Ring Buna-N 70SH -904, ID8.92mm X W1.83mm	0.33 [8.38]
5	1/4-18 NPT	0.45[11.43]
6	1/8-27 NPT	0.32[8.13]

TABLE 3

DIM 'A'	CONNECTION	V/mA OUTPUT		mV OUTPUT
		<math>< 1000 \text{ PSIG/A}</math>	>math>\ge 1000 \text{ PSIG/A}</math>	
	CABLE	2.18" MAX	2.24" MAX	1.21"
	PACKARD	2.14" MAX	2.19 MAX	-

OUTPUT OPTIONS

Code	Output	Supply (V)		
		MIN	TYP	MAX
2	0 – 100mV (Constant Voltage 10mV/V Output)	2.5	10	14
3	0.5 – 4.5 V (Ratiometric @ 5V)	4.75	5	5.25
4	1 – 5 V	8		30
8	4 – 20 mA	9		30

Packard connector not available with mV output

**ORDER INFORMATION**

US3 3 3 - 00000 2 - 100P A

Output		
Code	Type	Supply Voltage
2	0 – 100mV Ratiometric	2.5 – 14V (typ. 10V)
3	0.5 – 4.5V Ratiometric	4.75 – 5.25V (Typ. 5V)
4	1 – 5V	8 – 30V
8	4 – 20mA	10 – 30V

Connection		
Code	Connection Type	Dim 'E'
1	Cable, 2 feet	24"±1"
2	Cable, 4 feet	48"±2"
3	Cable, 10 feet	120"±4"
4	Packard Connector	-

Pressure Port		
Code	Port Type	Dim 'C'
2	1/4-19 BSPP	0.45[11.43]
4	7/16"-20UNF Male SAE J514 Straight Thread Boss O-Ring BUNA-N 70SH-904 ID8.92mmxW1.83mm	0.33[8.38]
5	1/4-18 NPT	0.45[11.43]
6	1/8-27 NPT	0.32[8.13]

Pressure Reference	
G	Gauge
A	Absolute

Pressure Range		
mV Output Version	Amplified Output Version	
psi Std.	psi Std	bar Std
015P	015P	001B
030P	030P	002B
050P	050P	3.5B
100P	100P	007B
300P	300P	020B
500P	500P	035B
01KP	01KP	070B
03KP	03KP	200B
05KP	05KP	350B

**NORTH AMERICA**

Measurement Specialties, Inc.,  
a TE Connectivity Company  
Phone: 800-522-6752  
Email: [customercare.frm@te.com](mailto:customercare.frm@te.com)

**EUROPE**

Measurement Specialties (Europe), Ltd.,  
a TE Connectivity Company  
Phone: +31-73-624-6999  
Email: [customercare.lcsb@te.com](mailto:customercare.lcsb@te.com)

**ASIA**

Measurement Specialties (China), Ltd.,  
a TE Connectivity Company  
Phone: 0400-820-6015  
Email: [customercare.shzn@te.com](mailto:customercare.shzn@te.com)

**TE.com/sensorsolutions**

Measurement Specialties, Inc., a TE Connectivity company.

Measurement Specialties, TE Connectivity, TE Connectivity (logo) and EVERY CONNECTION COUNTS are trademarks. All other logos, products and/or company names referred to herein might be trademarks of their respective owners.

The information given herein, including drawings, illustrations and schematics which are intended for illustration purposes only, is believed to be reliable. However, TE Connectivity makes no warranties as to its accuracy or completeness and disclaims any liability in connection with its use. TE Connectivity's obligations shall only be as set forth in TE Connectivity's Standard Terms and Conditions of Sale for this product and in no case will TE Connectivity be liable for any incidental, indirect or consequential damages arising out of the sale, resale, use or misuse of the product. Users of TE Connectivity products should make their own evaluation to determine the suitability of each such product for the specific application.

© 2015 TE Connectivity Ltd. family of companies All Rights Reserved.



Компания «ЭлектроПласт» предлагает заключение долгосрочных отношений при поставках импортных электронных компонентов на взаимовыгодных условиях!

Наши преимущества:

- Оперативные поставки широкого спектра электронных компонентов отечественного и импортного производства напрямую от производителей и с крупнейших мировых складов;
- Поставка более 17-ти миллионов наименований электронных компонентов;
- Поставка сложных, дефицитных, либо снятых с производства позиций;
- Оперативные сроки поставки под заказ (от 5 рабочих дней);
- Экспресс доставка в любую точку России;
- Техническая поддержка проекта, помощь в подборе аналогов, поставка прототипов;
- Система менеджмента качества сертифицирована по Международному стандарту ISO 9001;
- Лицензия ФСБ на осуществление работ с использованием сведений, составляющих государственную тайну;
- Поставка специализированных компонентов (Xilinx, Altera, Analog Devices, Intersil, Interpoint, Microsemi, Aeroflex, Peregrine, Syfer, Eurofarad, Texas Instrument, Miteq, Cobham, E2V, MA-COM, Hittite, Mini-Circuits, General Dynamics и др.);

Помимо этого, одним из направлений компании «ЭлектроПласт» является направление «Источники питания». Мы предлагаем Вам помощь Конструкторского отдела:

- Подбор оптимального решения, техническое обоснование при выборе компонента;
- Подбор аналогов;
- Консультации по применению компонента;
- Поставка образцов и прототипов;
- Техническая поддержка проекта;
- Защита от снятия компонента с производства.



#### Как с нами связаться

**Телефон:** 8 (812) 309 58 32 (многоканальный)

**Факс:** 8 (812) 320-02-42

**Электронная почта:** [org@eplast1.ru](mailto:org@eplast1.ru)

**Адрес:** 198099, г. Санкт-Петербург, ул. Калинина, дом 2, корпус 4, литера А.