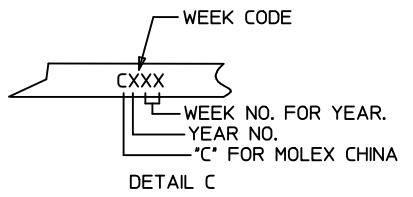
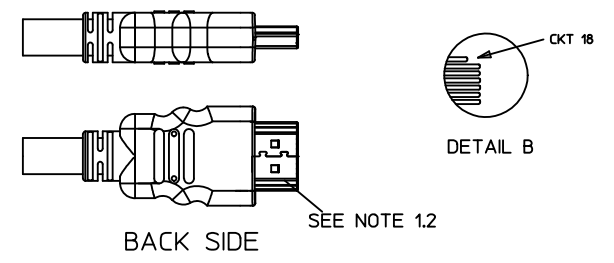
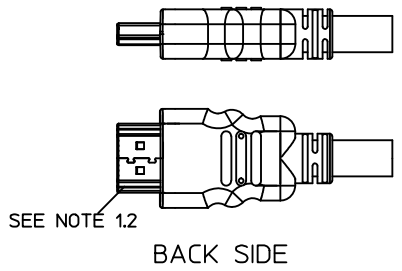
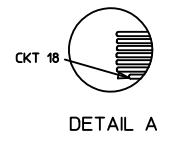
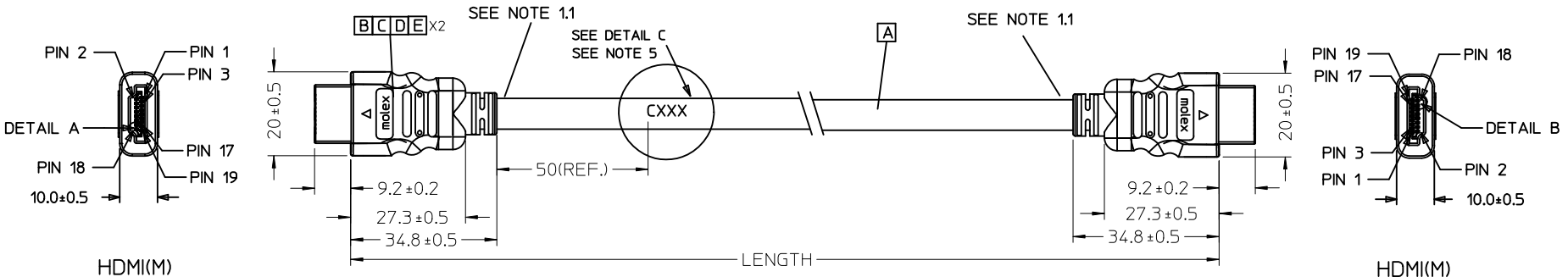


7 6 5 4 3 2 1



| | | | | | |
|-----------|-----------------------------|------------|-------------|----------------------|-----------|
| 887689830 | HDMI TO HDMI CABLE ASS'Y,5M | 5000 ± 100 | BLACK | 7.3MM(TMDS - AWG#28) | 172005984 |
| 887689820 | HDMI TO HDMI CABLE ASS'Y,3M | 3000 ± 80 | BLACK | 7.3MM(TMDS - AWG#28) | 172005984 |
| 887689810 | HDMI TO HDMI CABLE ASS'Y,2M | 2000 ± 60 | BLACK | 7.3MM(TMDS - AWG#28) | 172005984 |
| 887689800 | HDMI TO HDMI CABLE ASS'Y,1M | 1000 ± 30 | BLACK | 7.3MM(TMDS - AWG#28) | 172005984 |
| MX P/N | DESCRIPTION | LENGTH | CABLE COLOR | CABLE OD | CABLE P/N |

| | | | | | | | | |
|-------------------------------------------------------------------------------------------------|----------------------------------------|-------------------------|---------------------------------------------------------------------------------------------|-----------------------------------------------------------------------------------------------------------------------|-------------------------------------------------------------------------------------------------------------------------------|--------------|------------------------|------------------------|
| ENTER DESCRIPTION EC NO: DG2011-0439 DRWN: FZHANG01 CHKD: JLU13 APPR: ZXDENG | 2011/05/04 2011/05/04 2011/05/11 | DESCRIPTION G REV | QUALITY SYMBOLS ▽=0 ▽=0 | GENERAL TOLERANCES (UNLESS SPECIFIED) mm INCH | DIMENSION STYLE MM ONLY | SCALE --- | DESIGN UNITS METRIC | THIRD ANGLE PROJECTION |
| | | | 4 PLACES ± --- ± --- 3 PLACES ± --- ± --- 2 PLACES ± --- ± --- 1 PLACE ± --- ± --- | DRAWN BY DATE FZHANG01 2011/05/04 CHECKED BY DATE LPNING 2011/05/04 APPROVED BY DATE ZXDENG 2011/05/11 | TITLE HDMI(M) TO HDMI(M) CABLE ASS'Y | | | |
| | | | ANGULAR ± ---° | MATERIAL NO. SEE TABLE | MOLEX INCORPORATED DOCUMENT NO. SD-88768-9810 | | | |
| | | | DRAFT WHERE APPLICABLE MUST REMAIN WITHIN DIMENSIONS | SIZE A 4 | THIS DRAWING CONTAINS INFORMATION THAT IS PROPRIETARY TO MOLEX INCORPORATED AND SHOULD NOT BE USED WITHOUT WRITTEN PERMISSION | | | |
| | | | | | SHEET NO. 1 OF 2 | | | |

6 5 4 3 2 1

7

6

5

4

3

2

1

WIRE DIAGRAM:

| SHIELD | SHIELD | OVERALL SHIELD | GROUND |
|--------|--------|----------------|--------------------|
| PIN 19 | PIN 19 | PINK | HOT PLUG DETECT |
| PIN 18 | PIN 18 | ORANGE | +5V POWER |
| PIN 17 | PIN 17 | YELLOW | DDC/CEC GROUND |
| PIN 16 | PIN 16 | WHITE | SDA |
| PIN 15 | PIN 15 | RED | SCL |
| PIN 14 | PIN 14 | VIOLET | RESERVED |
| PIN 13 | PIN 13 | GRAY | CEC |
| PIN 12 | PIN 12 | WHITE | TMDS CLOCK- |
| PIN 11 | PIN 11 | BRAID | TMDS CLOCK SHIELD |
| PIN 10 | PIN 10 | BLACK | TMDS CLOCK+ |
| PIN 9 | PIN 9 | WHITE | TMDS DATA 0- |
| PIN 8 | PIN 8 | BRAID | TMDS DATA 0 SHIELD |
| PIN 7 | PIN 7 | BLUE | TMDS DATA 0+ |
| PIN 6 | PIN 6 | WHITE | TMDS DATA 1- |
| PIN 5 | PIN 5 | BRAID | TMDS DATA 1 SHIELD |
| PIN 4 | PIN 4 | GREEN | TMDS DATA 1+ |
| PIN 3 | PIN 3 | WHITE | TMDS DATA 2- |
| PIN 2 | PIN 2 | BRAID | TMDS DATA 2 SHIELD |
| PIN 1 | PIN 1 | RED | TMDS DATA 2+ |
| HDMI | HDMI | COLOR | CABLE FUNCTION |

NOTE:

1. OVERMOLD SPECIFICATION:

1.1 HDMI OUTER MOLDED WITH PVC RESIN

HDMI INNER MOLDED WITH PVC RESIN

1.2 DUST COVER MOLDED WITH PE

2. PRODUCT ELECTRICAL SPECIFICATION REFER TO HDMI SPEC.

3. THE CODE PLEASE BE PRINTED ON THE SPACE

4. THIS PRODUCT MUST MEET EU CHEMICAL SUBSTANCE

SPECIFICATION FOR PRODUCTS. (EU 2002/95/EC)

| ITEM | DESCRIPTION | L | QTY. |
|------|------------------------------------------------------|---|------|
| E | PRE-CUT C.Foil 47X23mm T=25U 172003402 | | 2 |
| D | COPPER FOIL 172000915 | | 2 |
| C | HDMI 19P MALE,30U"Au Solder Type 172004051 | | 2 |
| B | Metal Shell For HDMI 19P Male 172004052 | | 2 |
| A | (4P+1P)X28+5CX28,ALSH,PVC,BK,7.3,UL20276 (SEE TABLE) | | 1 |

| | | | | | | | | | |
|--------------------------------------------------------------------------------------------------------------------------|-------------------------------|---------------------------------------|------|------------------------------------------------------------|-------------------------------------------------------------------------------------------------------------------------------|------------------------|--------------------------------------------|-------------------------------|---------------------|
| ENTER DESCRIPTION EC NO: DG2011-0439 DRWN:FZHANG01 2011/05/04 CHKD:JLILU13 2011/05/04 APPR:ZXDENG 2011/05/11 | QUALITY SYMBOLS ▽=0 ◻=0 | GENERAL TOLERANCES (UNLESS SPECIFIED) | | DIMENSION STYLE MM ONLY | SCALE --- | DESIGN UNITS METRIC | THIRD ANGLE PROJECTION | | |
| | | | mm | INCH | DRAWN BY FZHANG01 | DATE 2011/05/04 | TITLE HDMI(M) TO HDMI(M) CABLE ASS'Y | | |
| | | 4 PLACES | ±--- | ±--- | CHECKED BY LPNING | DATE 2011/05/04 | | | |
| | | 3 PLACES | ±--- | ±--- | APPROVED BY ZXDENG | DATE 2011/05/11 | | | |
| | | 2 PLACES | ±--- | ±--- | MATERIAL NO. SEE TABLE | | | DOCUMENT NO. SD-88768-9810 | SHEET NO. 2 OF 2 |
| | | 1 PLACE | ±--- | ±--- | THIS DRAWING CONTAINS INFORMATION THAT IS PROPRIETARY TO MOLEX INCORPORATED AND SHOULD NOT BE USED WITHOUT WRITTEN PERMISSION | | | | |
| | | ANGULAR ±----° | | DRAFT WHERE APPLICABLE MUST REMAIN WITHIN DIMENSIONS | | | | | |

6

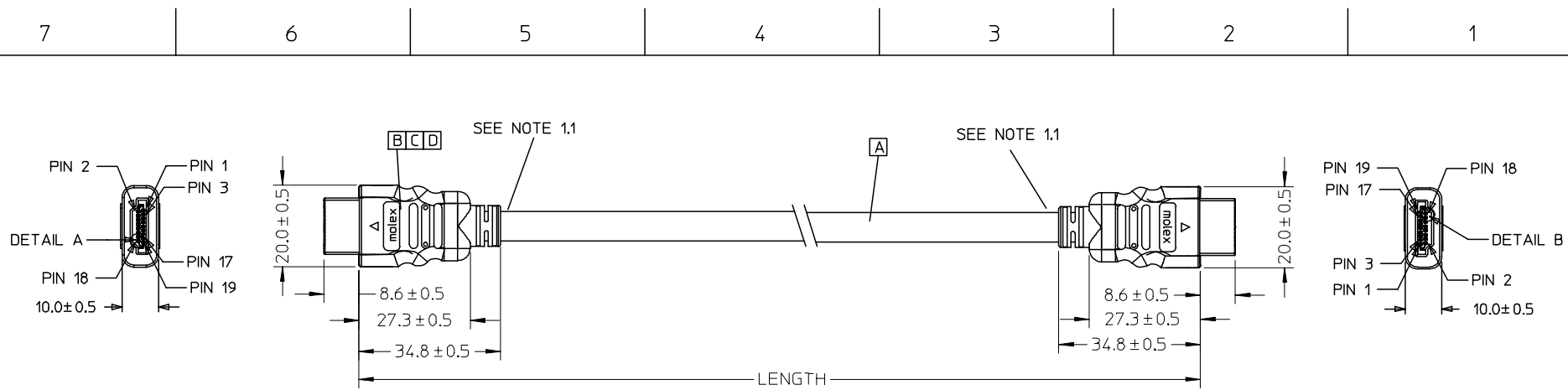
5

4

3

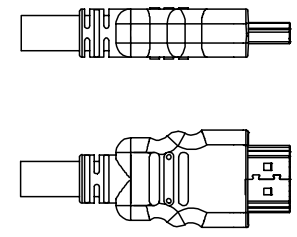
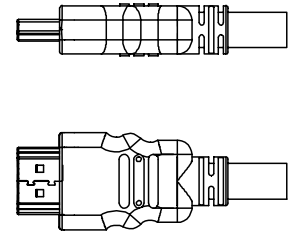
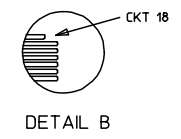
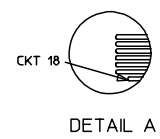
2

1



HDMI(M)

HDMI(M)



BACK SIDE

BACK SIDE

| | | | | | |
|---------------|-----------------------------|---------------|--------------------|----------------------|------------------|
| 88768-9830 | HDMI TO HDMI CABLE ASS'Y,5M | 5000 ± 100 | BLACK | 7.3MM(TMDS - AWG#28) | 887808610 |
| 88768-9820 | HDMI TO HDMI CABLE ASS'Y,3M | 3000 ± 80 | BLACK | 7.3MM(TMDS - AWG#28) | 887808610 |
| 88768-9810 | HDMI TO HDMI CABLE ASS'Y,2M | 2000 ± 60 | BLACK | 7.3MM(TMDS - AWG#28) | 887808610 |
| 88768-9800 | HDMI TO HDMI CABLE ASS'Y,1M | 1000 ± 30 | BLACK | 7.3MM(TMDS - AWG#28) | 887808610 |
| MX P/N | DESCRIPTION | LENGTH | CABLE COLOR | CABLE OD | CABLE P/N |

| | |
|--------------------|-------------|
| ENTER DESCRIPTION | 2005/12/27 |
| EC NO: DG2006-0144 | 2005/12/30 |
| DRWN: JFZHENG | 2006/01/16 |
| CHKD: | |
| APPR: DQLUO | |
| REV | DESCRIPTION |

| |
|-----------------|
| QUALITY SYMBOLS |
| ▽=0 |
| ∇=0 |

| | |
|------------------------------------------------------|-------|
| GENERAL TOLERANCES (UNLESS SPECIFIED) | |
| | mm |
| | INCH |
| 4 PLACES | ± --- |
| 3 PLACES | ± --- |
| 2 PLACES | ± --- |
| 1 PLACE | ± --- |
| ANGULAR ± ---° | |
| DRAFT WHERE APPLICABLE MUST REMAIN WITHIN DIMENSIONS | |

| | |
|-----------------|------------|
| DIMENSION STYLE | |
| MM ONLY | |
| DRAWN BY | DATE |
| JFZHENG | 2005/12/26 |
| CHECKED BY | DATE |
| JFZHENG | 2005/12/26 |
| APPROVED BY | DATE |
| DQLUO | 2005/12/26 |

| | | |
|--------------------------------|--------------|------------------------|
| SCALE | DESIGN UNITS | THIRD ANGLE PROJECTION |
| --- | METRIC | |
| TITLE | | |
| AWG28 HDMI TO HDMI CABLE ASS'Y | | |
| MOLEX INCORPORATED | | |
| MATERIAL NO. | DOCUMENT NO. | SHEET NO. |
| ENTER PART | SD-887689810 | 1 OF 00 |

NOTE:


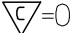

1. OVEMROLD SPECIFICATION:
 - 1.1 HDMI INNERMOLD WITH BK PVC 887800019.
 - 1.2 HDMI OVERMOLD WITH PVC 887800150.
 2. MECHANICAL SPECIFICATION:

CABLE SHOULD STAND THE PULL FORCE 89-111N FOR 30 SECONDS WITH NO VISIBLE TERMINATION DAMAGE.
 3. PRODUCT ELECTRICAL SPECIFICATION:
 - 3.1 DIELECTRIC STRENGTH.
 - 3.2 INSULATION RESISTANCE
 - 3.3 CONDUCTIVE RESISTANCE.
 - 3.4 TMDS Signals Time Domain Impedence
 - 3.5 TMDS Signals Time Domain Crosstalk:FEXT
 - 3.6 TMDS Signals Skew
 - 3.7 Attenuation(
- REFER TO ES-002 ELECTRICAL SPECIFICATION FOR DETAILS.
- 4.CABLE CONSTRUCTION
(AWG#28*1P+D)*4 + AWG#28*1P + AWG#28*5C, 7.3MMOD
 5. THIS PRODUCT MUST MEET ROHS COMPLIANCE.

WIRE DIAGRAM:

| SHIELD | SHIELD | OVERALL SHIELD | GROUND |
|--------|--------|----------------|--------------------|
| PIN 19 | PIN 19 | PINK | HOT PLUG DETECT |
| PIN 18 | PIN 18 | ORANGE | +5V POWER |
| PIN 17 | PIN 17 | YELLOW | DDC/CEC GROUND |
| PIN 16 | PIN 16 | WHITE | SDA |
| PIN 15 | PIN 15 | RED | SCL |
| PIN 14 | PIN 14 | VIOLET | RESERVED |
| PIN 13 | PIN 13 | GRAY | CEC |
| PIN 12 | PIN 12 | WHITE | TMDS CLOCK- |
| PIN 11 | PIN 11 | BRAID | TMDS CLOCK SHIELD |
| PIN 10 | PIN 10 | WHITE/BLACK | TMDS CLOCK+ |
| PIN 9 | PIN 9 | WHITE | TMDS DATA 0- |
| PIN 8 | PIN 8 | BRAID | TMDS DATA 0 SHIELD |
| PIN 7 | PIN 7 | WHITE/BLUE | TMDS DATA 0+ |
| PIN 6 | PIN 6 | WHITE | TMDS DATA 1- |
| PIN 5 | PIN 5 | BRAID | TMDS DATA 1 SHIELD |
| PIN 4 | PIN 4 | WHITE/GREEN | TMDS DATA 1+ |
| PIN 3 | PIN 3 | WHITE | TMDS DATA 2- |
| PIN 2 | PIN 2 | BRAID | TMDS DATA 2 SHIELD |
| PIN 1 | PIN 1 | WHITE/RED | TMDS DATA 2+ |
| HDMI | HDMI | COLOR | CABLE FUNCTION |

| | | | |
|------|------------------------------------|---|------|
| D | SMALL METAL PLATE 47152-6009 | | 2 |
| C | HDMI METAL CAN 47152-4001 | | 2 |
| B | HDMI HOUSING ASSY' 47152-1100 | | 2 |
| A | HDMI SINGLE LINK CABLE (SEE TABLE) | | 1 |
| ITEM | DESCRIPTION | L | QTY. |

| | | | | | | | | | | |
|--------------------------------------------------------------------------------------------------------------------|-----------------------------------------------------------------------------------------------------------------------------------------------------------------------------------------------------|---------------------------------------|------------------------------------------------------|----------------------------|-------------------------------------------------------------------------------------------------------------------------------|------------------------------|----------------------------------------------------------------------------------------------------------|------------------------|--|--|
| ENTER DESCRIPTION EC NO: DG2006-0144 TDRWN: JFZHENG 2005/12/27 CHKD: 2005/12/30 APPR: DQLUO 2006/01/16 | QUALITY SYMBOLS  =0  =0 | GENERAL TOLERANCES (UNLESS SPECIFIED) | | DIMENSION STYLE MM ONLY | | SCALE --- | DESIGN UNITS METRIC | THIRD ANGLE PROJECTION | | |
| | | | mm | INCH | DRAWN BY JFZHENG | DATE 2005/12/26 | TITLE AWG28 HDMI TO HDMI CABLE ASS'Y | | | |
| | | 4 PLACES | ±--- | ±--- | CHECKED BY JFZHENG | DATE 2005/12/26 |  MOLEX INCORPORATED | | | |
| | | 3 PLACES | ±--- | ±--- | APPROVED BY DQLUO | DATE 2005/12/26 | | | | |
| 2 PLACES | ±--- | ±--- | ANGULAR ±---° | | MATERIAL NO. ENTER PART | DOCUMENT NO. SD-887689810 | SHEET NO. 2 OF 00 | | | |
| 1 PLACE | ±--- | ±--- | DRAFT WHERE APPLICABLE MUST REMAIN WITHIN DIMENSIONS | | THIS DRAWING CONTAINS INFORMATION THAT IS PROPRIETARY TO MOLEX INCORPORATED AND SHOULD NOT BE USED WITHOUT WRITTEN PERMISSION | | | | | |



Компания «ЭлектроПласт» предлагает заключение долгосрочных отношений при поставках импортных электронных компонентов на взаимовыгодных условиях!

Наши преимущества:

- Оперативные поставки широкого спектра электронных компонентов отечественного и импортного производства напрямую от производителей и с крупнейших мировых складов;
- Поставка более 17-ти миллионов наименований электронных компонентов;
- Поставка сложных, дефицитных, либо снятых с производства позиций;
- Оперативные сроки поставки под заказ (от 5 рабочих дней);
- Экспресс доставка в любую точку России;
- Техническая поддержка проекта, помощь в подборе аналогов, поставка прототипов;
- Система менеджмента качества сертифицирована по Международному стандарту ISO 9001;
- Лицензия ФСБ на осуществление работ с использованием сведений, составляющих государственную тайну;
- Поставка специализированных компонентов (Xilinx, Altera, Analog Devices, Intersil, Interpoint, Microsemi, Aeroflex, Peregrine, Syfer, Eurofarad, Texas Instrument, Miteq, Cobham, E2V, MA-COM, Hittite, Mini-Circuits, General Dynamics и др.);

Помимо этого, одним из направлений компании «ЭлектроПласт» является направление «Источники питания». Мы предлагаем Вам помощь Конструкторского отдела:

- Подбор оптимального решения, техническое обоснование при выборе компонента;
- Подбор аналогов;
- Консультации по применению компонента;
- Поставка образцов и прототипов;
- Техническая поддержка проекта;
- Защита от снятия компонента с производства.



Как с нами связаться

Телефон: 8 (812) 309 58 32 (многоканальный)

Факс: 8 (812) 320-02-42

Электронная почта: org@eplast1.ru

Адрес: 198099, г. Санкт-Петербург, ул. Калинина, дом 2, корпус 4, литера А.