



MELCHER™
The Power Partners.

RCM150/300 Series 150/300 W DC-DC Converters

The RCM Series converters are reliable power supplies for railway and transportation systems. There are 2 input voltage ranges covering all common railway batteries. The output delivers 150 or 300 W at 12, 15 or 24 V. The converters are designed for chassis mounting and exhibit a closed housing with cooling openings.

Many options are available, such as an output ORing FET for redundant operation, output voltage adjustment, interruption time of 10 ms (class S2), shutdown input, and an output voltage monitor controlling a relay (change-over contact).



Features

- RoHS lead-free-solder product
- 2 input voltage ranges, covering all railway batteries
- Single output 12, 15 or 24 V
- Closed housing for chassis mounting
- Extremely high efficiency and high power density
- Low inrush current
- 3 connectors: Input, output, auxiliary
- Overtemperature, overvoltage, overcurrent, and overload protection
- Many options available
- Dimensions:
 - RCM150 96 x 36.1 x 164.5 mm (3.78 x 1.42 x 6.48 in)
 - RCM300 116 x 38 x 188.6 mm (4.57 x 1.5 x 4.43 in)
- Compliant to EN 50155, EN 50121-3-2, AREMA
- Fire and smoke: compliant to EN 45545 and NFPA 130
- 5 year warranty

Safety-approved to the latest edition of IEC/EN 62368-1 and UL/CSA 62368-1



¹ pending

Table of Contents

| | |
|-----------------------------|----|
| Description..... | 1 |
| Model Selection..... | 2 |
| Functional Description..... | 3 |
| Electrical Input Data..... | 4 |
| Electrical Output Data..... | 7 |
| Description of Options..... | 10 |

| | |
|---|----|
| Electromagnetic Compatibility (EMC)..... | 12 |
| Immunity to Environmental Conditions..... | 14 |
| Mechanical Data..... | 15 |
| Safety and Installation Instructions..... | 16 |
| Accessories..... | 18 |

Model Selection

Table 1: Standard models

| $V_{i\ min}^1$ [V] | Input voltage | | | | Output | | Power $P_{o\ nom}$ [W] | Efficiency ² | | Model | Options |
|-----------------------|----------------------|-------|-------|-----------------------|---------------------|---------------------|------------------------------|-------------------------|---------------------|---------------------------|---------------|
| | $V_{i\ cont}$ [V] | | | $V_{i\ max}^1$ [V] | $V_{o\ nom}$ [V] | $I_{o\ nom}$ [A] | | η_{min} [%] | η_{typ} [%] | | |
| 14.4 | 16.8 | (24) | 45 | 52.5 | 12 | 12.5 | 150 | 88 | 90 | 24RCM150-12 | D, M, Q, F, K |
| | | | | | 15 | 10.0 | 150 | 90 | 91 | 24RCM150-15 | |
| | | | | | 24 | 6.25 | 150 | 90 | 91 | 24RCM150-24 | |
| 43.2 | 50.4 | (110) | 137.5 | 154 | 12 | 12.5 | 150 | 91 | 92.5 | 110RCM150-12 | |
| | | | | | 15 | 10.0 | 150 | | | 110RCM150-15 ³ | |
| | | | | | 24 | 6.25 | 150 | 92 | 93 | 110RCM150-24 | |
| 14.4 | 16.8 | (24) | 45 | 52.5 | 12 | 25 | 300 | 89 | 90.5 | 24RCM300-12 ³ | |
| | | | | | 24 | 12.5 | 300 | 90 | 91 | 24RCM300-24 | |
| 43.2 | 50.4 | (110) | 137.5 | 154 | 12 | 25 | 300 | 91 | 92.5 | 110RCM300-12 | |
| | | | | | 24 | 12.5 | 300 | 92 | 93.5 | 110RCM300-24 | |

¹ Short time; see table 2 for details.
² Efficiency at $T_A = 25\ ^\circ\text{C}$, $V_{i\ nom}$, $I_{o\ nom}$, $V_{o\ nom}$, only option D fitted.
³ Contact Bel Power Solutions for availability and release date.

Part Number Description

Operating input voltage $V_{i\ cont}$ (continuously):
 16.8 – 45 VDC 24
 50.4 – 137.5 VDC 110

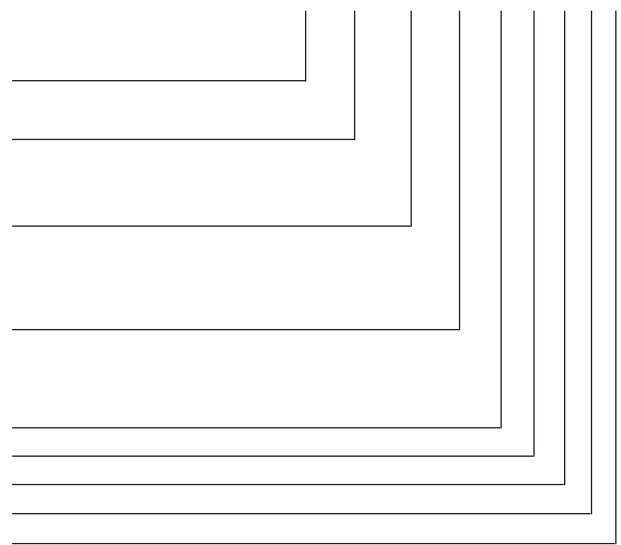
Series RCM

Output power:
 150 W 150
 300 W 300

Nominal output voltage:
 12 V -12
 15 V -15
 24 V -24

Auxiliary functions and options:
 Out OK, output voltage adjust, shutdown ¹ D
 Interruption time M
 ORing FET Q
 Fuse built-in F
 Pluggable Connectors K

110 RCM 150 -24 D M Q F K



¹ Opt. D requires the auxiliary connector.
Note: The sequence of options must follow the order above.
Note: All models are RoHS-compliant for all six substances.

Available combinations of options:
 24/110RCMxxx-xx (K)
 24/110RCMxxx-xxD (K)
 24/110RCMxxx-xxDF (K)
 24/110RCMxxx-xxDMQ (K)
 24/110RCMxxx-xxDMQF (K)

Example: 110RCM150-24DMQ: DC-DC converter, input voltage range 50.4 to 137.5V continuously, output providing 24 V /6.25 A, monitoring relay, output voltage adjust, shutdown input, interruption time 10 ms, integrated ORing FET, operating ambient temperature $T_A = -40$ to $70\ ^\circ\text{C}$, RoHS-compliant for all six substances.

Product Marking

Type designation, applicable safety approval and recognition marks, CE mark, pin allocation, and product logo.

Input voltage range and input current, nominal output voltage and current, degree of protection, batch no., serial no., and data code including production site, version (modification status) and date of production.

Functional Description

The converters are designed as active clamp forward converters with a switching frequency of approximately 120 kHz. The built-in high-efficient input filter together with a small input capacitance generates very low inrush current of short duration. An antiparallel diode acts as reverse polarity protection together with the external circuit breaker or fuse.

The circuitry providing the interruption time (opt. M) is located after the input filter.

The rectification on the secondary side is provided by synchronous rectifiers, in order to keep the losses as low as possible. The output voltage control logic is located on the secondary side and influences the primary logic through magnetic feedback.

An auxiliary converter supplies all circuits with a stable bias voltage.

An output ORing FET is available (option Q) and allows for a redundant power supply system. If there are no external circuit breakers, it is possible to order the converter with incorporated fuse (opt. F). Because this fuse is not accessible, a serial diode provides reverse polarity protection (only with option F or M).

Opt. D encompasses an additional auxiliary connector and allows for output voltage adjust and a primary shutdown. An output voltage monitor controls a relay with a change-over contact.

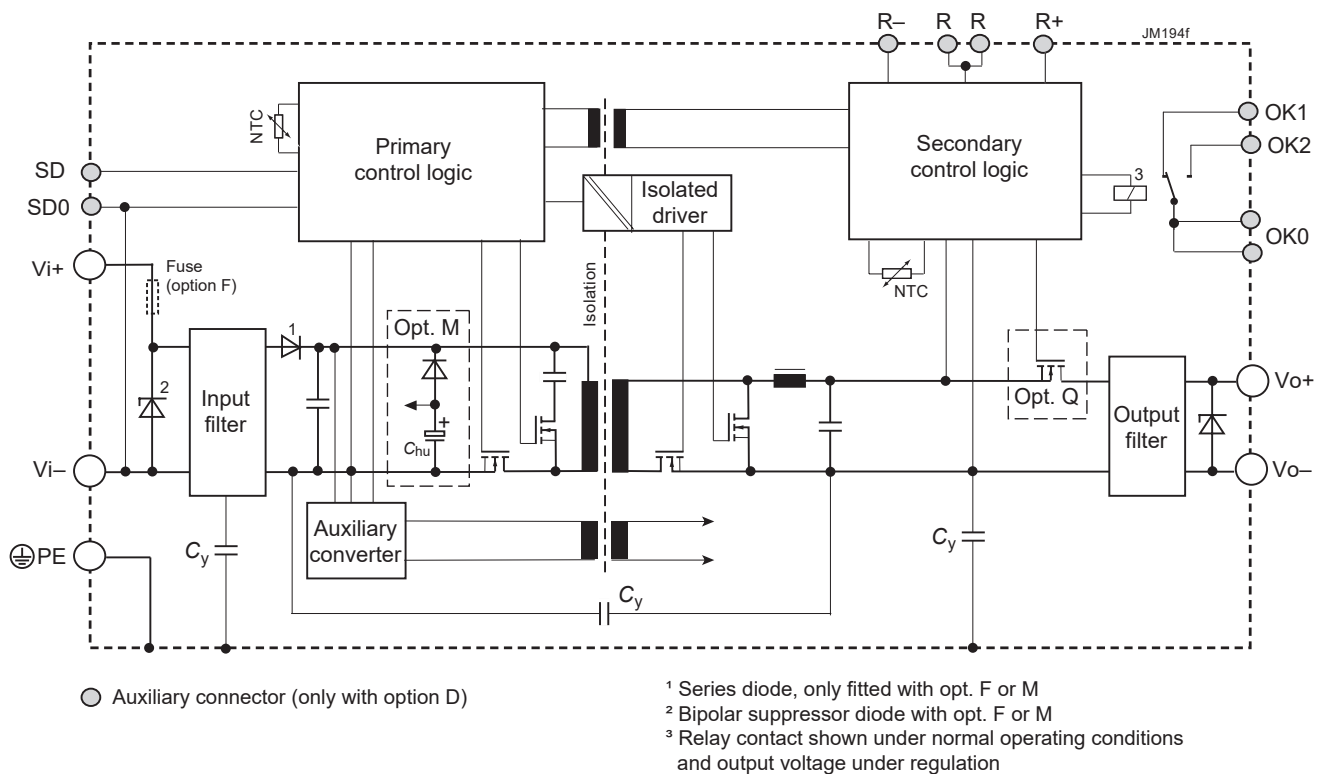


Fig. 1
Block diagram

Electrical Input Data

General conditions:

- $T_A = 25\text{ °C}$, unless T_C is specified.

Table 2a: Input data of RCM150 models

| Model | | | 24RCM150 | | | 110RCM150 | | | Unit |
|--------------------|---|---|----------|------|------|------------------|-------|-------|---------------|
| Characteristics | | Conditions | min | typ | max | min | typ | max | |
| $V_{i\text{cont}}$ | Operating input voltage continuous | $I_o = 0 - I_{o\text{max}}$ $T_{C\text{min}} - T_{C\text{max}}$ | 16.8 | (24) | 45.0 | 50.4 | (110) | 137.5 | V |
| V_{i2s} | for ≤ 2 s | without shutdown | 14.4 | | 52.5 | 43.2 | | 154 | |
| $V_{i\text{nom}}$ | Nominal input voltage | | 24, (36) | | | (72), (96), 110 | | | |
| $V_{i\text{abs}}$ | Input voltage limits | 3 s without damage | 0 | | 55 | 0 | | 165 | |
| I_i | Typical input current | $V_{i\text{nom}}, I_{o\text{nom}}$ | 6.8 | | | 1.5 | | | A |
| P_{i0} | No-load input power | $V_{i\text{min}} - V_{i\text{max}}, I_o = 0$ | 2.5 | | 4 | 4 ² | | 6 | W |
| P_{iSD} | Idle input power | $V_{i\text{min}} - V_{i\text{max}}, V_{SD} = 0\text{ V}$ | 0.7 | | 1.5 | 0.7 ² | | 1.5 | W |
| C_i | Input capacitance ¹ | | 40 | | | 10 | | | μF |
| R_i | Input resistance | | | | | 100 | | | m Ω |
| $I_{\text{inr p}}$ | Peak inrush current | $V_i = V_{i\text{max}}, P_{o\text{nom}}$ | | | | 75 | | | A |
| $t_{\text{inr d}}$ | Duration of inrush current | | | | | 0.5 | | | 0.5 |
| t_{on} | Start-up time | $0 \rightarrow V_{i\text{min}}, P_{o\text{nom}}$ | | | | 1000 | | | ms |
| | Start-up time after removal of shutdown | $V_{i\text{min}}, P_{o\text{nom}}$ $V_{SD} = 0 \rightarrow 5\text{ V}$ | | | | 300 | | | |

Table 2b: Input data of RCM300 models

| Model | | | 24RCM300 | | | 110RCM300 | | | Unit |
|--------------------|---|---|----------|------|------|-----------------|-------|-------|---------------|
| Characteristics | | Conditions | min | typ | max | min | typ | max | |
| $V_{i\text{cont}}$ | Operating input voltage continuous | $I_o = 0 - I_{o\text{max}}$ $T_{C\text{min}} - T_{C\text{max}}$ | 16.8 | (24) | 45.0 | 50.4 | (110) | 137.5 | V |
| V_{i2s} | for ≤ 2 s | without shutdown | 14.4 | | 52.5 | 43.2 | | 154 | |
| $V_{i\text{nom}}$ | Nominal input voltage | | 24, (36) | | | (72), (96), 110 | | | |
| $V_{i\text{abs}}$ | Input voltage limits | 3 s without damage | 0 | | 55 | 0 | | 165 | |
| I_i | Typical input current | $V_{i\text{nom}}, I_{o\text{nom}}$ | 13.9 | | | 3 ² | | | A |
| P_{i0} | No-load input power | $V_{i\text{min}} - V_{i\text{max}}, I_o = 0$ | | 4 | 6 | 4 ² | | 6 | W |
| P_{iSD} | Idle input power | $V_{i\text{min}} - V_{i\text{max}}, V_{SD} = 0\text{ V}$ | | | 1.5 | | | 1.5 | W |
| C_i | Input capacitance ¹ | | 6 | | | 12 | | | μF |
| R_i | Input resistance | | | | | 140 | | | m Ω |
| $I_{\text{inr p}}$ | Peak inrush current | $V_i = V_{i\text{max}}, P_{o\text{nom}}$ | | | | 120 | | | A |
| $t_{\text{inr d}}$ | Duration of inrush current | | | | | 0.5 | | | 0.5 |
| t_{on} | Start-up time | $0 \rightarrow V_{i\text{min}}, P_{o\text{nom}}$ | | | | 1000 | | | ms |
| | Start-up time after removal of shutdown | $V_{i\text{min}}, P_{o\text{nom}}$ $V_{SD} = 0 \rightarrow 5\text{ V}$ | | | | 300 | | | |

¹ Not smoothed by the inrush current limiter at start-up (for inrush current calculation)

² Typ. value at $V_{i\text{max}}$. At lower V_i , the idle and low-load input power are smaller.

Input Transient and Reverse Polarity Protection

A suppressor diode and a symmetrical input filter form an effective protection against input transients, which typically occur in many installations, but especially in battery-driven mobile applications.

If the input voltage has the wrong polarity, the incorporated antiparallel diode causes the external input circuit breaker or fuse to trip. With option M or F (incorporated fuse), an active reverse-polarity protection circuit prevents from any damage.

Input Under-/Overvoltage Lockout

If the input voltage is out of range, an internally generated inhibit signal disables the converter to avoid any damage.

Inrush Current and Stability with Long Supply Lines

The converter operates with relatively small input capacitance C_i resulting in low inrush current of short duration.

If a converter is connected to the power source through supply lines with reasonable length, no additional measures are necessary to ensure stable operation.

Only in the case of very long supply lines exhibiting a considerable inductance L_{ext} , an additional external capacitor C_{ext} connected across the input pins improves the stability and prevents oscillations; see fig. 2.

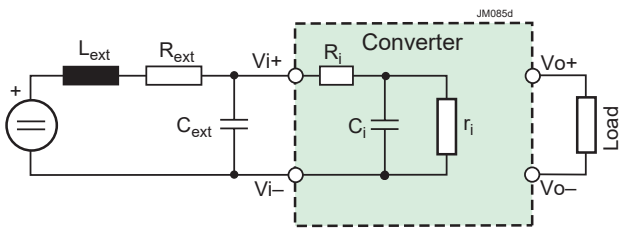


Table 3: Recommended values for the capacitor C_{ext}

| $V_{i\ nom}$ | RCM150 | RCM300 | Rated voltage |
|--------------|--------------|--------------|---------------|
| 24 V | 1500 μ F | 3000 μ F | 40 V |
| 36 V | 1000 μ F | 2000 μ F | 63 V |
| 72 V | 220 μ F | 440 μ F | 125 V |
| 110 V | 100 μ F | 200 μ F | 200 V |

Fig. 2
Input configuration

Actually, the RCM Series converter with its load acts as negative resistor r_i , because the input current I_i rises, when the input voltage V_i is decreased. It tends to oscillate with a resonant frequency determined by the line inductance L_{ext} and the input capacitance $C_i + C_{ext}$, damped by the resistor R_{ext} . The whole system is not linear at all and eludes a simple calculation. One basic condition is given by the formula:

$$C_i + C_{ext} > \frac{L_{ext} \cdot P_{o\ max}}{R_{ext} \cdot V_{i\ min}^2} \quad (r_i = \frac{dV_i}{dI_i})$$

R_{ext} is the series resistor of the voltage source including supply lines. If this condition is not fulfilled, the converter may not reach stable operating conditions. Worst case conditions are at lowest V_i and highest output power P_o .

Recommended values for C_{ext} for different batteries are listed in table 3, which should allow for stable operation up to an input inductance of 2 mH. C_i is specified in table 2.

Efficiency

The efficiency depends on the model and on the input voltage.

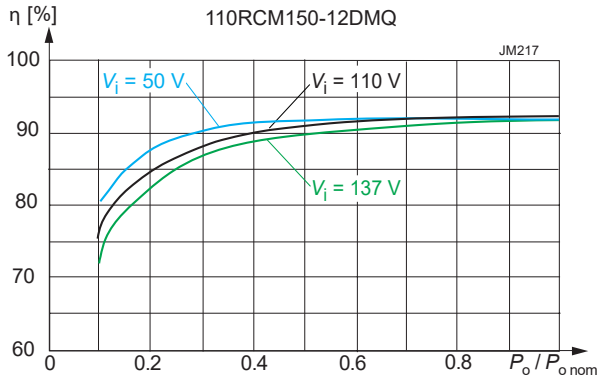


Fig. 3a
Efficiency versus V_i and P_o (110RCM150-12DMQ)

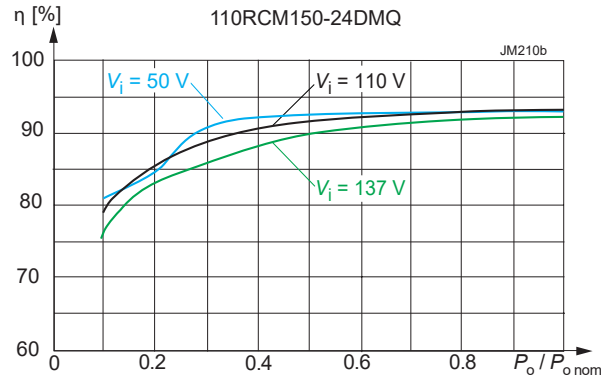


Fig. 3b
Efficiency versus V_i and P_o (110RCM150-24DMQ)

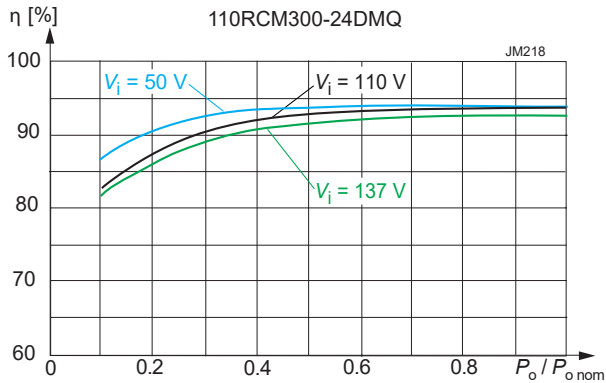


Fig. 3c
Efficiency versus V_i and P_o (110RCM300-24DMQ)

Electrical Output Data

General conditions:

- $T_A = 25\text{ °C}$, unless T_C is specified
- R input not connected

Table 4a: Output data of RCM150 models.

| Output | | Conditions | 12 V | | | 15 V | | | 24 V | | | Unit | | | |
|---------------------|--|--|---|------|-------|--------|-------|-------|--------|------|-------|------|--|--|------------------|
| Characteristics | | | min | typ | max | min | typ | max | min | typ | max | | | | |
| V_o | Output voltage ¹ | $V_{i\text{nom}}, 0.5 I_{o\text{nom}}$ | 11.88 | 12 | 12.12 | 14.85 | 15.00 | 15.15 | 23.76 | 24 | 24.24 | V | | | |
| V_{ow} | Worst case output voltage | $\frac{V_{i\text{min}} - V_{i\text{max}}}{T_{C\text{min}} - T_{C\text{max}}}, 0 - I_{o\text{nom}}$ | 11.64 | | 12.36 | 14.55 | | 15.45 | 23.28 | | 24.72 | | | | |
| $V_{o\text{droop}}$ | Output voltage droop | | | - 20 | | | - 30 | | | - 40 | | mV/A | | | |
| V_{oL} | Overvoltage shutdown ⁶ | | | 14 | | | 17.5 | | | 28 | | V | | | |
| V_{oP} | Overvoltage protection ² | | 14.3 | 15 | 15.8 | 17.8 | | 19.8 | 28.5 | 30 | 31.5 | | | | |
| $I_{o\text{nom}}$ | Nominal output current | | | 12.5 | | | 10.0 | | | 6.25 | | A | | | |
| I_{oL} | Output current limit | $T_{C\text{min}} - T_{C\text{max}}$ | 13.0 | | 15 | 10.4 | | 12.0 | 6.5 | | 7.2 | | | | |
| V_o | Output noise ³ | Switching frequency | $V_{i\text{nom}}, I_{o\text{nom}}$ | | | 40 | | | 60 | | | 80 | | | mV _{pp} |
| | | Total incl. spikes | BW = 20 MHz | | | 60 | | | 100 | | | 120 | | | |
| V_{od} | Dynamic load regulation | Voltage deviation ⁵ | $V_{i\text{nom}}$ | | | 700 | | | 800 | | | 1000 | | | ms |
| t_d ⁴ | | Recovery time | $0.1 \leftrightarrow 0.9 I_{o\text{nom}}$ | | | 5 | | | 5 | | | 5 | | | |
| α_{vo} | Temperature coefficient of v_o (NTC) | $0 - I_{o\text{nom}}, T_{C\text{min}} - T_{C\text{max}}$ | - 0.02 | | 0 | - 0.02 | | 0 | - 0.02 | | 0 | %/K | | | |

Table 4b: Output data of RCM300 models.

| Output | | Conditions | 12 V | | | 24 V | | | Unit | | | |
|---------------------|--|--|---|------|-------|--------|------|-------|------|--|--|------------------|
| Characteristics | | | min | typ | max | min | typ | max | | | | |
| V_o | Output voltage ¹ | $V_{i\text{nom}}, 0.5 I_{o\text{nom}}$ | 11.88 | 12 | 12.12 | 23.76 | 24 | 24.24 | V | | | |
| V_{ow} | Worst case output voltage | $\frac{V_{i\text{min}} - V_{i\text{max}}}{T_{C\text{min}} - T_{C\text{max}}}, 0 - I_{o\text{nom}}$ | 11.64 | | 12.36 | 23.28 | | 24.72 | | | | |
| $V_{o\text{droop}}$ | Output voltage droop | | | - 20 | | | - 40 | | mV/A | | | |
| V_{oL} | Overvoltage shutdown ⁶ | | | 14 | | | 28 | | V | | | |
| V_{oP} | Overvoltage protection ² | | 14.3 | 15 | 15.8 | 28.5 | 30 | 31.5 | | | | |
| $I_{o\text{nom}}$ | Nominal output current | | | 25 | | | 12.5 | | A | | | |
| I_{oL} | Output current limit | $T_{C\text{min}} - T_{C\text{max}}$ | 27 | | 30 | 13.5 | | 15 | | | | |
| V_o | Output noise ³ | Switching frequency | $V_{i\text{nom}}, I_{o\text{nom}}$ | | | 60 | | | 80 | | | mV _{pp} |
| | | Total incl. spikes | BW = 20MHz | | | 80 | | | 120 | | | |
| V_{od} | Dynamic load regulation | Voltage deviation ⁵ | $V_{i\text{nom}}$ | | | 1000 | | | 1200 | | | ms |
| t_d ⁴ | | Recovery time | $0.1 \leftrightarrow 0.9 I_{o\text{nom}}$ | | | 5 | | | 5 | | | |
| α_{vo} | Temperature coefficient of v_o (NTC) | $0 - I_{o\text{nom}}, T_{C\text{min}} - T_{C\text{max}}$ | - 0.02 | | 0 | - 0.02 | | 0 | %/K | | | |

- 1 If the output voltage is increased above $V_{o\text{nom}}$ through R-input control, the output power should be reduced accordingly, so that $P_{o\text{max}}$ and $T_{C\text{max}}$ are not exceeded.
- 2 Breakdown voltage of the incorporated suppressor diode at 1 mA. Exceeding this value might damage the suppressor diode.
- 3 Measured according to IEC/EN 61204 with a probe described in annex A
- 4 Recovery time until V_o returns to $\pm 1\%$ of V_o ; see fig. 4.
- 5 No overshoot at switch on.
- 6 Output overvoltage protection by an electronic circuitry.

Output Voltage Regulation

Line and load regulation of the output is so good that input voltage and output current have virtually no influence to the output voltage.

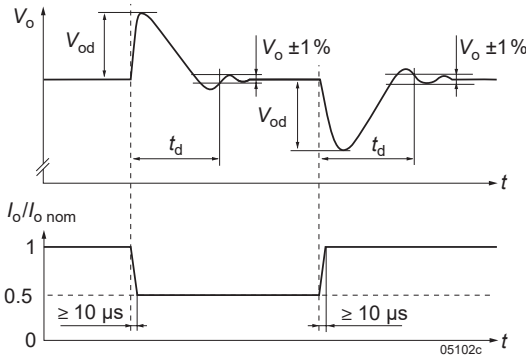


Fig. 4
Typical dynamic load regulation of output voltage

Thermal Considerations and Protection

A temperature protection is incorporated in the primary and secondary control logic each. It generates an internal inhibit signal, which disables the converter in case of overtemperature. The converter automatically recovers, when the temperature drops below the limit. See fig. 5. The relationship between T_A and T_C depends heavily upon the conditions of operation and integration into a system.

Caution: The installer must ensure that under all operating conditions T_C remains within the limits stated in table 8.

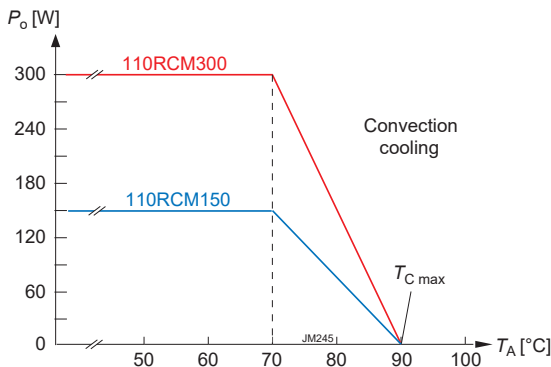


Fig. 5
Typical output power derating versus temperature; vertical mounting position, free convection cooling.

Output Current Limitation

The output is continuously protected against open-circuit (no load) and short-circuit by an electronic current limitation with rectangular characteristic; see fig. 6.

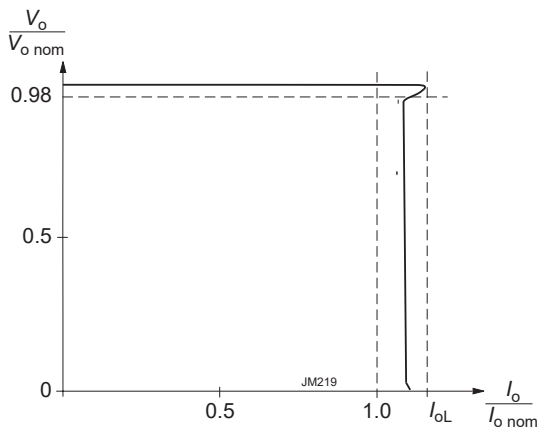


Fig. 6
Rectangular current limitation

Series and Parallel Connection

The outputs of several RCM Series converters may be connected in series.

Note: If the sum of the output voltages is greater than 60 V, it cannot be considered as ES1 (Electrical energy source class 1) according to the safety standards.

Several RCM models of the same type can be operated in parallel connection. To ensure proper current sharing, the load lines should have equal length and section. The output voltage exhibits a slight droop characteristic, which facilitates current sharing. In addition, the output voltage tends to be lowered with increasing temperature.

Redundant Systems

For redundant systems, we recommend the options Q and D, see *Options*.

LED Indicator

The converters exhibit a green LED “Out OK”, signaling that the output voltage is within the specified range.

Description of Options

Option D: Output Monitor, Output Adjust, Shutdown

Option D consists of several auxiliary functions and encompasses an additional auxiliary connector.

Output Voltage Adjust (R)

Note: With open R-input, $V_o = V_{o\text{nom}}$.

The converter allows for adjusting the output voltage in the range of 80 to 105% of $V_{o\text{nom}}$. The adjust is accomplished by an external resistor R_{ext1} or R_{ext2} , connected to the R-input; see fig. 7.

Depending on the value of the required output voltage, the resistor shall be connected:

either: Between the R-pin and R- to adjust the output voltage to a value below $V_{o\text{nom}}$:

$$R_{\text{ext1}} \approx 4 \text{ k}\Omega \cdot \frac{V_o}{V_{o\text{nom}} - V_o} - 15.8 \text{ k}\Omega$$

Note: $R_{\text{ext1}} = 0 \Omega$ reduces V_o to 80%.

or: Between the R-pin and R+ to adjust the output voltage to a value greater than $V_{o\text{nom}}$:

$$R_{\text{ext2}} \approx 4 \text{ k}\Omega \cdot \frac{(V_o - 2.5 \text{ V})}{2.5 \text{ V} \cdot (V_o/V_{o\text{nom}} - 1)} - R_a$$

Note: $R_{\text{ext2}} = 0 \Omega$ increases V_o to 105%.

$R_a = 300 \text{ k}\Omega$ for $V_{o\text{nom}} = 12 \text{ V}$ $R_a = \text{xxx k}\Omega$ for $V_{o\text{nom}} = 15 \text{ V}$ $R_a = 680 \text{ k}\Omega$ for $V_{o\text{nom}} = 24 \text{ V}$

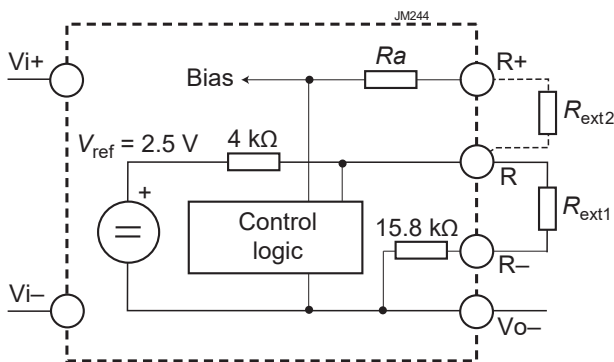


Fig. 7
Output voltage control via R-input

Output Voltage Monitor (D)

The output voltage V_o is monitored. When V_o is in range, a relay with a change-over contact is activated, connecting OK0 with OK1.

Note: The trigger levels are typ. $\pm 5\%$ of $V_{o\text{nom}}$ (with open R-input).

Data of relay contacts: 0.4 A / 150 VDC

Primary Shutdown (SD)

The output of the converter may be enabled or disabled by a logic signal (e.g. CMOS) applied between the shutdown pin SD and SD0 (= Vi-). If the shutdown function is not required, pin SD can be left open-circuit. Voltage on pin SD:

Converter operating: 12 to 154 V or open-circuit
Converter disabled: -2 to +2 V

The output response is shown in fig. 8.

Note: In systems consisting of several converters, this feature may be used to control the activation sequence by logic signals or to enable the power source to start up, before full load is applied.

Option M: Interruption Time

The interruption time t_{hu} is specified in the railway standard EN 50155:2017 clause 5.1.1.4: It is tested at the nominal battery voltage for interruption and short-circuit of the input. After such an event, the system is ready for another such event after 10 s. Fig. 8 shows the output voltage V_o with option M.

$t_{hu} = 10$ ms (Class S2) in all other cases.

For less critical applications, option M is not required (class S1, no interruption time).

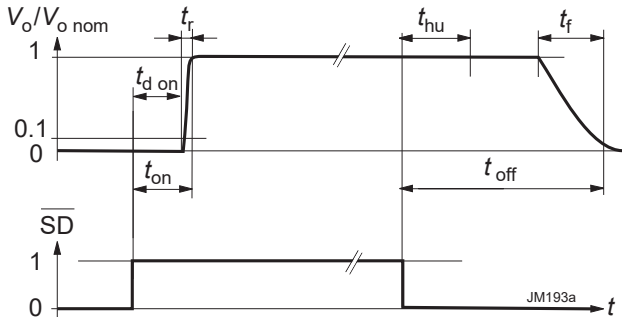


Fig. 8 Typical output response to the SD-signal. If option M is not fitted, $t_{hu} = 0$ ms.

Option Q: ORing FET for Redundant Systems

The outputs of 2 parallel connected converters are separated with ORing diodes (built by FETs). If one converter fails, the remaining one must be capable to still deliver the full power to the load. If more power is needed, the system may be extended to more parallel converters (n+1 redundancy).

Current sharing must be ensured by load lines of equal section and length. In addition, a slight droop characteristic of the output voltage and a negative temperature coefficient are helpful as well.

To keep the losses as small as possible, the ORing diode is replaced by a FET. The voltage drop is approx. 22 mV (not dependent of I_o).

Note: In the case of a failing converter, the output voltage is maintained by the redundant converters. However, the failing item should be identified and replaced. We recommend the Out OK function (option D).

Option F: Incorporated Fuse

The railway standard EN 50155 disadvises fuses in the converters. Consequently, the installer must preview an external fuse or circuit breaker. However, when this is not possible, an incorporated fuse is available (option F). This fuse is not accessible and will not trip, except if the converter is defect.

Note: Converters with option F or option M are protected against input reverse polarity by a series diode.

Table 5: Recommended external fuses (same as with option F)

| Converter | Specification | Ordering number |
|-----------|------------------|--------------------------|
| 24RCM150 | 15 A fast acting | BEL 0ADE (P) 9150 |
| 24RCM300 | 30 A fast acting | BEL 0ADE (P) 9300 |
| 110RCM150 | 5 A fast acting | Littelfuse 0507 005.MXEP |
| 110RCM300 | 8 A fast acting | Littelfuse 0507 008.MXEP |

Option K: Pluggable Connectors

This option allows the use of pre-assembled pluggable connectors; for details see *Accessories*.

Note: Female connectors must be ordered separately.

Electromagnetic Compatibility (EMC)

Electromagnetic Immunity

Table 6: Electromagnetic immunity (type tests). Corresponds or Exceeds EN50121-3-2:2016 and AREMA

| Phenomenon | Standard | Level | Coupling mode ¹ | Value applied | Waveform | Source imped. | Test procedure | In oper. | Perf. crit. ² | | | | | |
|-----------------------------------|------------------|-------|----------------------------|----------------------|---|-----------------|---|----------|--------------------------|----------------|-----|----------------|-----|---|
| Electrostatic discharge (to case) | IEC/EN 61000-4-2 | 4 | contact discharge | 6000 V _p | 1/50 ns | 330 Ω 150 pF | 10 pos. & 10 neg. discharges | yes | A | | | | | |
| | | | air discharge | 8000 V _p | | | | | | | | | | |
| Electromagnetic field | IEC/EN 61000-4-3 | x | antenna | 20 V/m | AM 80% / 1 kHz | N/A | 80 – 800 MHz | yes | A | | | | | |
| | | | antenna | 20 V/m | | | | | | AM 80% / 1 kHz | N/A | 800 – 1000 MHz | yes | A |
| | | | | 20 V/m | | | | | | | | | | |
| | | | | 5 V/m | | | | | | | | | | |
| 3 V/m | 5100 – 6000 MHz | | | | | | | | | | | | | |
| Electrical fast transients/burst | IEC/EN 61000-4-4 | 3 | capacitive, o/c | ±2000 V _p | bursts of 5/50 ns; 2.5/5 kHz over 15 ms; burst period: 300 ms | 50 Ω | 60 s positive 60 s negative transients per coupling mode | yes | A | | | | | |
| | | 3 | i/c, +i/-i direct coupling | | | | | | | | | | | |
| Surges | IEC/EN 61000-4-5 | 3 | i/c | ±2000 V _p | 1.2 / 50 μs | 42 Ω 0.5 μF | 5 pos. & 5 neg. surges per coupling mode | yes | A | | | | | |
| | | | +i/-i | ±1000 V _p | | | | | B | | | | | |
| | | | i/c, +i/-i | ±2000 V _p | | | | | | | | | | |
| Conducted disturbances | IEC/EN 61000-4-6 | 3 | i, o, signal wires | 10 VAC (140 dBμV) | AM 80% / 1 kHz | 150 Ω | 0.15 – 80 MHz | yes | A | | | | | |

¹ i = input, o = output, c = case

² A = normal operation, no deviation from specs.; B = normal operation, temporary loss of function or deviation from specs possible

Electromagnetic Emissions

All conducted emissions (fig. 9) have been tested as per EN 55011, group 1, class A. These limits are much stronger than requested in EN 50121-3-2:2016, table 2.1, and coincide with EN 50121-4:2016, table 1.1. The values in fig. 9 are quasipeak values, which are always lower than peak values.

The average values must respect a margin of 10 dB μ V below the limits for quasipeak.

Radiated emissions have been tested according to EN 55011, group 1, class A. These limits are similar to the requirements of EN 50121-3-2:2016 and EN 50121-4:2016, both calling up EN 61000-6-4+A1:2011, table 1. The tests were executed with horizontal and vertical polarization. The worse result is shown in fig. 10.

Note: The highest frequency of the internal sources of EUT is less than 108 MHz. Hence, Radiated Measurement was made up to 1 GHz. Non-accredited measurement up to 6 GHz are available on request.

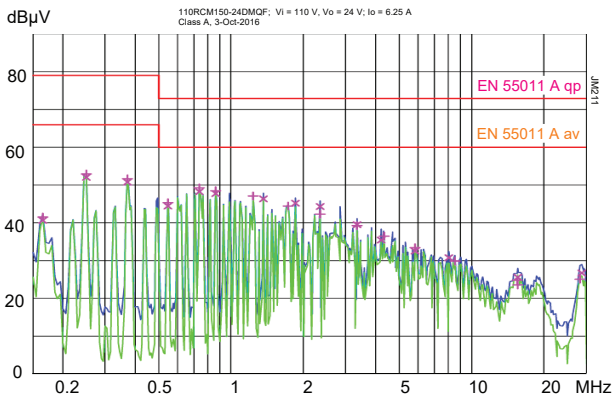


Fig. 9a
110RCM150-24: Typ. disturbance voltage at the input ($V_i = 110$ V, $I_{i\text{nom}}$, resistive load, quasi peak and average)

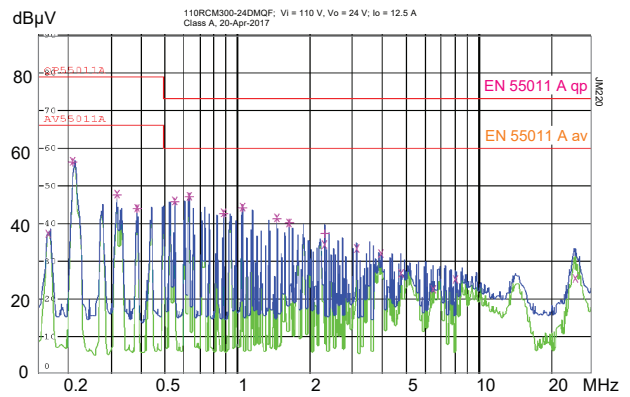


Fig. 9b
110RCM300-24: Typ. disturbance voltage at the input ($V_i = 110$ V, $I_{i\text{nom}}$, resistive load, quasi peak and average)

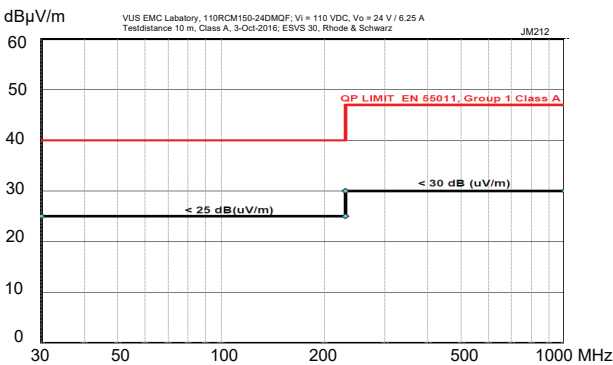


Fig. 10a
110RCM150-24: Typ. radiated disturbances in 10 m distance ($V_i = 110$ V, $I_{i\text{nom}}$, resistive load, quasi peak).

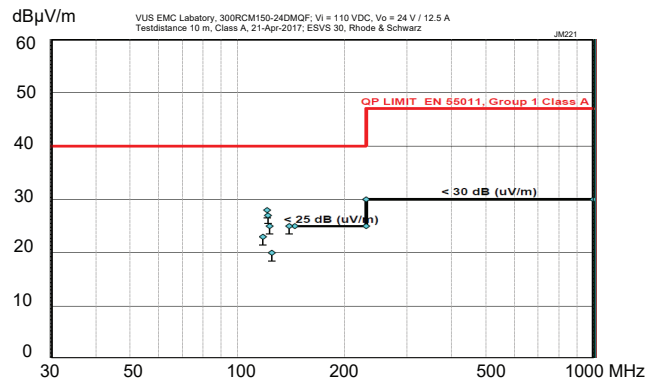


Fig. 10b
110RCM300-24: Typ. radiated disturbances in 10 m distance ($V_i = 110$ V, $I_{i\text{nom}}$, resistive load, quasi peak).

Immunity to Environmental Conditions

Table 7: Mechanical and climatic stress. Air pressure 800 – 1200 hPa

| Test method | | Standard | Test Conditions | Status |
|-------------|--|---|--|-------------------------|
| Ad | Low temperature start-up test | EN 50155:2017, clause 13.4.4 IEC/EN 60068-2-1 | Temperature, duration: - 40 °C, 2 h Performance test: +25 °C | Not operating |
| Be | Dry heat test, cycle A | EN 50155:2017, clause 13.4.5 IEC/EN 60068-2-2 | Temperature: 70 °C Duration: 6 h | Operating perf. crit. A |
| Db 2 | Cyclic damp heat test | EN 50155:2017, clause 13.4.7 IEC/EN 60068-2-30 | Temperature: 55 °C and 25 °C Cycles (respiration effect): 2 Duration: 2x 24 h | Not operating |
| Ka | Salt mist test sodium chloride (NaCl) solution | EN 50155:2017, clause 13.4.10 IEC/EN 60068-2-11 | Temperature: 35 ±2 °C Duration: 48 h | Converter not operating |
| - | Functional random vibration test | EN 50155:2017 clause 13.4.11.4 EN 61373:2010 clause 8, class B, body mounted ¹ | Acceleration amplitude: 0.1 g _n = 1.01 m/s ² Frequency band: 5 – 150 Hz Test duration: 30 min (10 min in each axis) | Operating perf. crit. A |
| - | Simulated long life testing | EN 50155:2017 clause 13.4.11.2 EN 61373:2010 clause 9, class B, body mounted ¹ | Acceleration amplitude: 0.58 g _n = 5.72 m/s ² Frequency band: 5 – 150 Hz Test duration: 15 h (5 h in each axis) | Not operating |
| - | Shock test | EN 50155:2017 clause 13.4.11.3 EN 61373:2010 clause 10, class B, body mounted ¹ | Acceleration amplitude: 5.1 g _n Bump duration: 30 ms Number of bumps: 18 (3 in each direction) | Operating perf. crit. A |
| - | Vibration sinusoidal | AREMA Part. 11.5.1 class C, D, E, I, J | Displacement amplitude: 0.3" (5 – 10 Hz) 0.07" (5 – 20 Hz) Acceleration amplitude: 1.5 g _n = 14.7 m/s ² (10 – 200 Hz) Frequency: 5 – 200 Hz Test duration: 12 h (4 h in each axis) | Operating perf. crit. A |
| - | Mechanical shock | AREMA Part. 11.5.1 class C, D, E, I, J | Acceleration amplitude: 10 g _n = 98 m/s ² Bump duration: 11 ms Number of bumps: 18 (3 in each direction) | Operating perf. crit. A |

¹ Body mounted = chassis of a railway coach

Temperatures

Table 8: Temperature specifications, valid for an air pressure of 800 – 1200 hPa (800 – 1200 mbar)

| Temperature | | | EN 50155:2017 Class OT4 | | | Unit |
|-----------------|-------------------------------|---------------------|-------------------------|-----|------------|------|
| Characteristics | | Conditions | min | max | 10 minutes | |
| T _A | Ambient temperature | Converter operating | - 40 | 70 | 85 | °C |
| T _C | Case temperature ¹ | | - 40 | 90 | | |
| T _S | Storage temperature | Not operational | - 55 | 85 | | |

¹ Measured at the measurement point T_C; see Mechanical Data.

Reliability

Table 9: MTBF

| Calculation method | Model | MTBF |
|-----------------------------------|------------------|-------------|
| According to IEC 61709 / SN-29500 | 110RCM150-24DMQF | 1 220 000 h |
| | 110RCM300-24DMQF | 1 030 000 h |

Mechanical Data

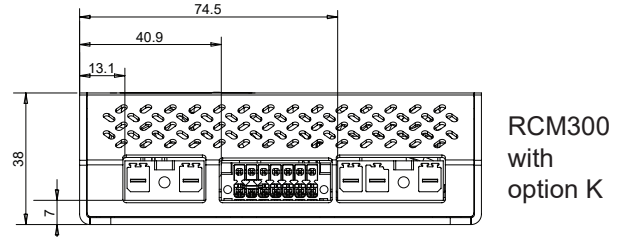
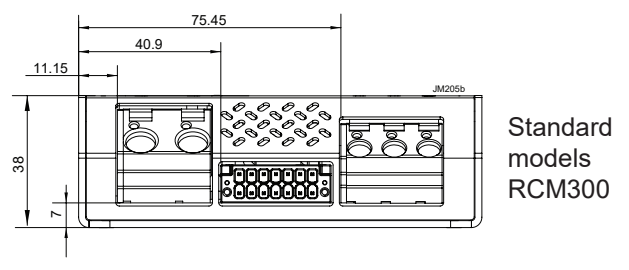
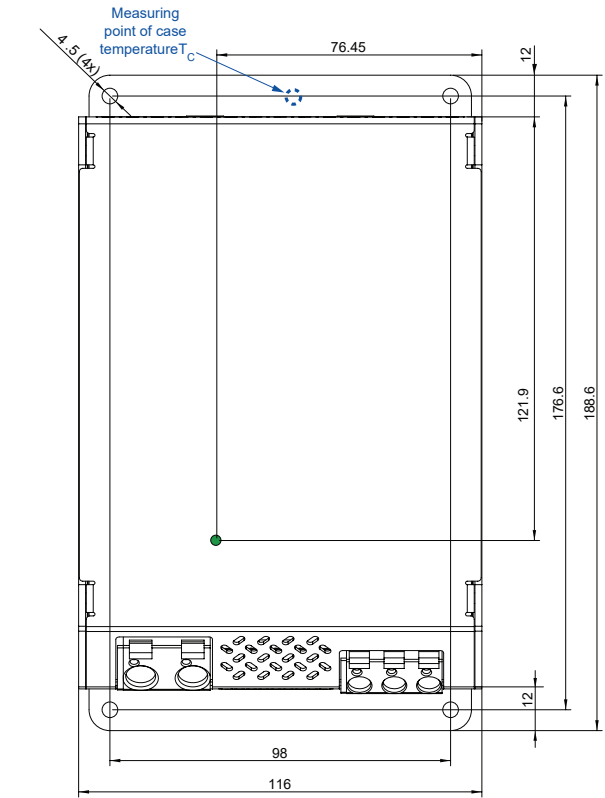
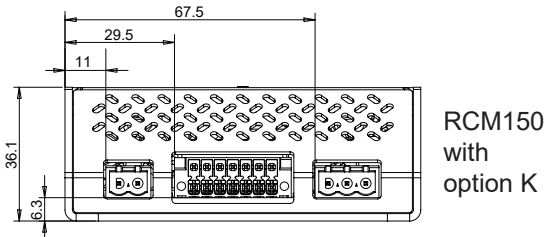
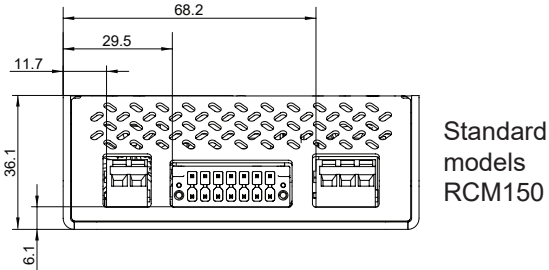
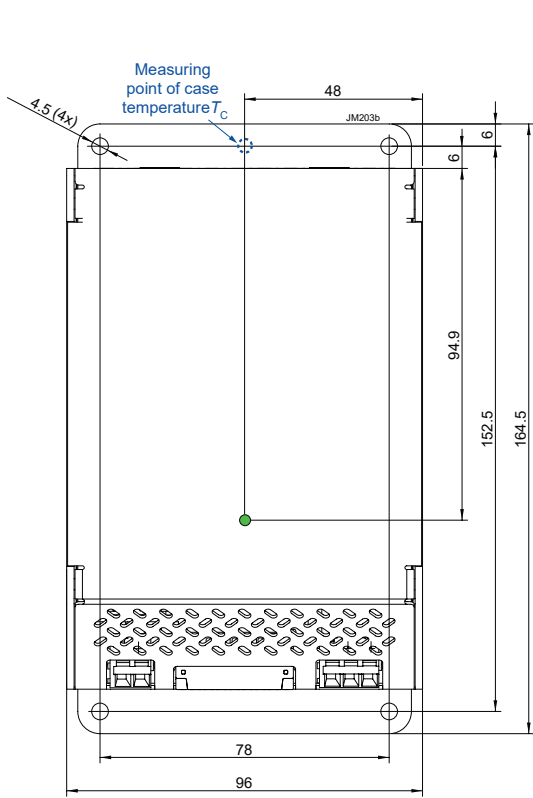


Fig. 11a
Case of RCM150 (RCM01)
weight approx. 520 g, Aluminum, EP-powder coated

Fig. 12a
Case of RCM300 (RCM02)
weight approx. 820 g, Aluminum, EP-powder coated

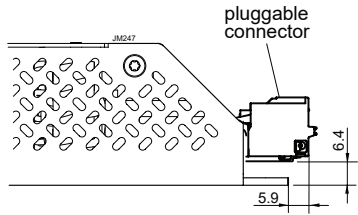


Fig. 11b
Plugged connector for RCM150 with option K

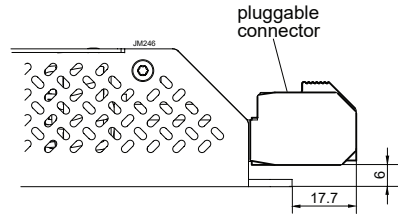


Fig. 12b
Plugged connector for RCM300 with option K

Safety and Installation Instruction

Connectors and Pin Allocation of RCM150

- Input connector, 3 pins: Wago 236-403: Vi+, Vi-, PE; wire section: 0.08 – 2.5 mm², 28 – 12 AWG; with option K: Phoenix Contact 1923762
- Output connector, 2 pins: Wago 236-402: Vo+, Vo-; wire section: 0.08 – 2.5 mm², 28 – 12 AWG with option K: Phoenix Contact 1923759
- Auxiliary connector: Phoenix Contact 1713883; pin allocation see fig. 13.

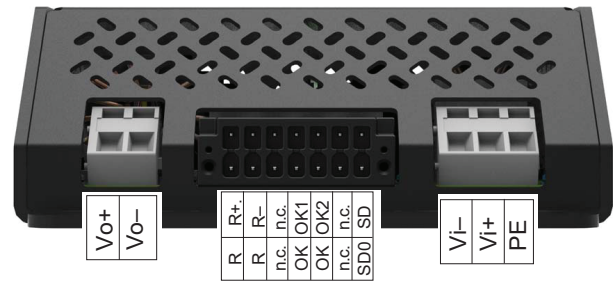


Fig. 13
Pin allocation of RCM150

Connectors and Pin Allocation of RCM300

- Input connector, 3 pins: Wago 745-353: Vi-, Vi+, PE wire section: 0.2 – 6 mm², 24 – 10 AWG with option K: Weidmüller 1048500000
- Output connector, 2 pins: Wago 745-602/006, Vo-, Vo+ wire section: 0.2 – 16 mm², 24 – 10 AWG with option K: Weidmüller 1048390000
- Auxiliary connector: Phoenix Contact 1713883; pin allocation see fig. 14.

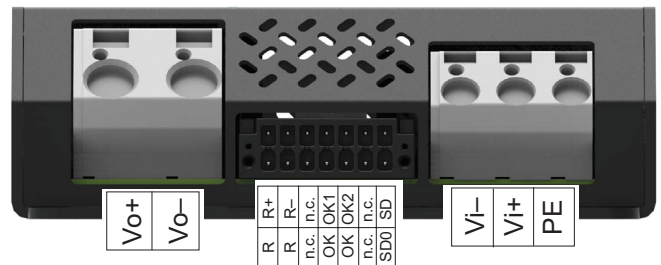


Fig. 14
Pin allocation of RCM300

Installation Instruction

These converters are components, intended exclusively for inclusion by an industrial assembly process or by a professionally competent person. Installation must strictly follow the national safety regulations in respect of the enclosure, mounting, creepage distances, clearances, markings and segregation requirements of the end-use application.

Connection to the system shall only be effected with cables with suitable wire section.

The auxiliary connector shall be connected via the suitable female connector; see *Accessories*.

Other installation methods may not meet the safety requirements. Check that PE is safely connected to protective earth.

No fuse is incorporated in the converter (except for option F). An external circuit breaker or a fuse in the wiring to one or both input pins.

Do not open the converters, or the warranty will be invalidated. Make sure that there is sufficient airflow available for convection cooling and that the temperature of the bottom plate is within the specified range. This should be verified by measuring the case temperature at the specified measuring point, when the converter is operated in the end-use application. $T_{C_{max}}$ should not be exceeded. Ensure that a failure of the converter does not result in a hazardous condition.

Standards and Approvals

The RCM Series converters are approved according to the last edition of IEC/EN 62368-1 and UL/CSA 62368-1.

They have been evaluated for:

- Class I equipment
- Building in
- Double or reinforced insulation based on 250 VAC or 240 VDC between input and output, and between input and the relay contacts (OK0, OK1, OK2)
- Pollution degree 2 environment.

The converters are subject to manufacturing surveillance in accordance with the above mentioned safety standards and with ISO 9001:2015, IRIS ISO/TS 22163:2017 certified quality and business management system..

Cleaning Liquids and Protection Degree

The converters are not hermetically sealed. In order to avoid possible damage, any penetration of liquids shall be avoided. The converters correspond to protection degree IP 30.

Railway Applications

The RCM Series converters have been designed observing the railway standards EN 50155:2017, EN 50121-3-2:2016, EN 50124-1:2017 and AREMA. All boards are coated with a protective lacquer.

The converters comply with the fire & smoke standard EN 45545:2016, HL1 to HL3.

Insulation Test

The electric strength test is performed in the factory as routine test in accordance with EN 50514, EN 50155:2017 and AREMA. It should not be repeated in the field, and the Company will not honor warranty claims resulting from incorrectly executed electric strength tests.

Table 10: Isolation

| Characteristics | Input to Output ¹ | Input to Case | Output to Case | OK contacts to | | | Unit |
|--|------------------------------|---------------|----------------|----------------|------------------|------------------|------|
| | | | | Input | Case | Outputs | |
| Voltage withstand levels (tested acc. to IEC 62368-1) -RCM150 | 4.2 | 2.12 | 1.0 | 2.86 | N/A ³ | N/A ³ | kVDC |
| Voltage withstand levels (tested acc. to IEC 62368-1) -RCM300 | 4.2 | 2.86 | 1.0 | 2.86 | N/A ³ | N/A ³ | kVDC |
| Voltage withstand levels (designed to meet AREMA and factory tested) | 4.2 ¹ | 2.86 | 2.86 | 2.86 | 2.86 | 2.86 | kVDC |
| Insulation resistance ² | >300 | >300 | >300 | >300 | >300 | >300 | MΩ |
| Creepage distances | 5.0 | 3.5 | 3.5 | 3.5 | 3.5 | 3.5 | mm |

¹ Pretest of subassemblies in accordance with IEC/EN 62368-1

² Tested at 500 VDC

³ No safety isolation requirements applicable between OK contacts to chassis and OK contacts to output per IEC 62368-1

Accessories

Female Connectors

A suitable female auxiliary connector HZZ00145-G (Phoenix Contact 1790344) is available; see fig. 15.

Wire section: 0.2 – 1.5 mm², 24 – 16 AWG.

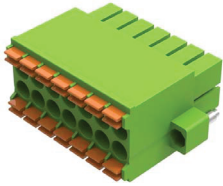


Fig. 15
Female connector 14 pins, HZZ00145-G (Phoenix Contact 1790344)

For converters RCM150 with option K, use (see fig. 16):

- HZZ00300-G (3 poles, Phoenix Contact 1942167)
- HZZ00301-G (2 poles, Phoenix Contact 1942154).

Wire section: 0.2 – 2.5 mm², 24 – 12 AWG.



Fig. 16
Female connectors for RCM150 with option K

For converters RCM300 with option K, use (see fig. 17):

- HZZ00303-G (3 poles, Weidmüller 1060580000)
- HZZ00302-G (2 poles, Weidmüller 1060550000).

Wire section: 0.5 – 10 mm², 24 – 8 AWG

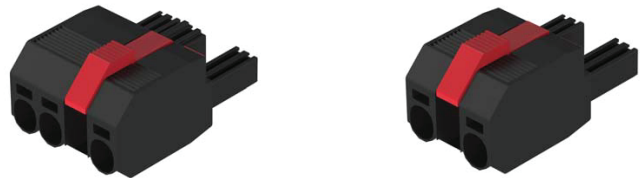


Fig. 17
Female connectors for RCM300 with option K

DIN-Rail Mounting Bracket DMB

A suitable DIN-Rail mounting bracket HZZ00625-G is available; see Fig. 18.



Fig. 18
DIN-Rail mounting bracket for RCM series HZZ00625-G

NUCLEAR AND MEDICAL APPLICATIONS - These products are not designed or intended for use as critical components in life support systems, equipment used in hazardous environments, or nuclear control systems.

TECHNICAL REVISIONS - The appearance of products, including safety agency certifications pictured on labels, may change depending on the date manufactured. Specifications are subject to change without notice.



Компания «ЭлектроПласт» предлагает заключение долгосрочных отношений при поставках импортных электронных компонентов на взаимовыгодных условиях!

Наши преимущества:

- Оперативные поставки широкого спектра электронных компонентов отечественного и импортного производства напрямую от производителей и с крупнейших мировых складов;
- Поставка более 17-ти миллионов наименований электронных компонентов;
- Поставка сложных, дефицитных, либо снятых с производства позиций;
- Оперативные сроки поставки под заказ (от 5 рабочих дней);
- Экспресс доставка в любую точку России;
- Техническая поддержка проекта, помощь в подборе аналогов, поставка прототипов;
- Система менеджмента качества сертифицирована по Международному стандарту ISO 9001;
- Лицензия ФСБ на осуществление работ с использованием сведений, составляющих государственную тайну;
- Поставка специализированных компонентов (Xilinx, Altera, Analog Devices, Intersil, Interpoint, Microsemi, Aeroflex, Peregrine, Syfer, Eurofarad, Texas Instrument, Miteq, Cobham, E2V, MA-COM, Hittite, Mini-Circuits, General Dynamics и др.);

Помимо этого, одним из направлений компании «ЭлектроПласт» является направление «Источники питания». Мы предлагаем Вам помощь Конструкторского отдела:

- Подбор оптимального решения, техническое обоснование при выборе компонента;
- Подбор аналогов;
- Консультации по применению компонента;
- Поставка образцов и прототипов;
- Техническая поддержка проекта;
- Защита от снятия компонента с производства.



Как с нами связаться

Телефон: 8 (812) 309 58 32 (многоканальный)

Факс: 8 (812) 320-02-42

Электронная почта: org@eplast1.ru

Адрес: 198099, г. Санкт-Петербург, ул. Калинина, дом 2, корпус 4, литера А.