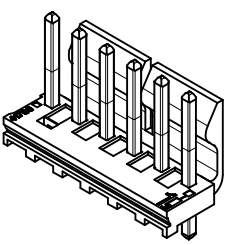
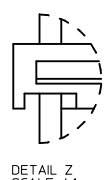
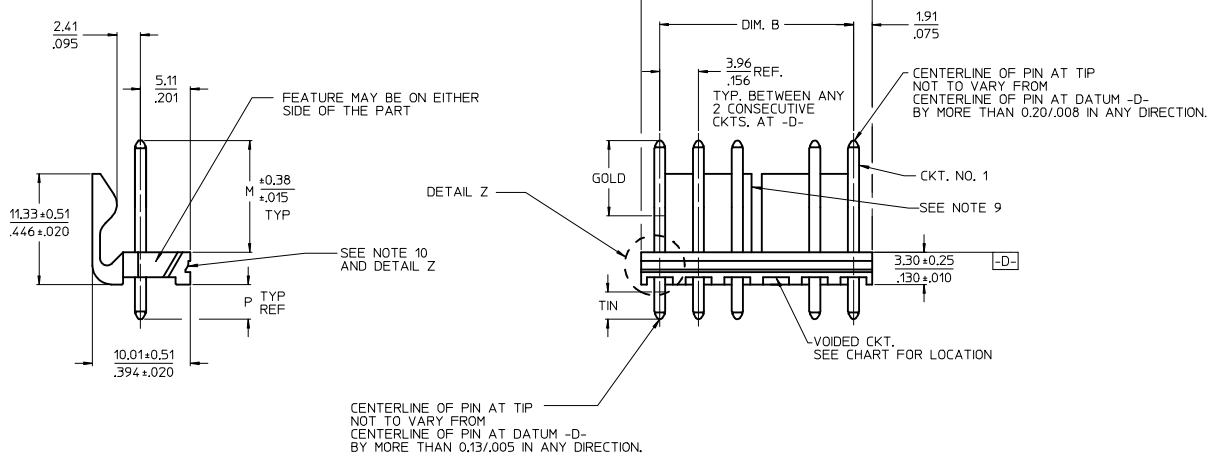
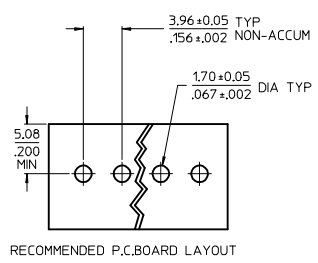


10 9 8 7 6 5 4 3 2 1



| CKT | DIM. A | DIM. B | SLOT LOC BETWEEN CKTS |
|-----|----------------|--------------------------|-----------------------|
| 2 | 7.77 .306 | 3.96±0.05 .156±.002 | NONE |
| 3 | 11.73 .462 | 7.92±0.08 .312±.003 | NONE |
| 4 | 15.70 .618 | 11.89±0.08 .468±.003 | NONE |
| 5 | 19.66 .774 | 15.85±0.10 .624±.004 | NONE |
| 6 | 23.62 .930 | 19.81±0.10 .780±.004 | 3 & 4 |
| 7 | 27.58 1.086 | 23.77±0.10 .936±.004 | 4 & 5 |
| 8 | 31.55 1.242 | 27.74±0.13 1.092±.005 | 4 & 5 |
| 9 | 35.51 1.398 | 31.70±0.13 1.248±.005 | 5 & 6 |
| 10 | 39.47 1.554 | 35.66±0.13 1.404±.005 | 5 & 6 |
| 11 | 43.43 1.710 | 39.62±0.15 1.560±.006 | 6 & 7 |
| 12 | 47.40 1.866 | 43.59±0.15 1.716±.006 | 4 & 5 8 & 9 |
| 13 | 51.36 2.022 | 47.55±0.15 1.872±.006 | 4 & 5 9 & 10 |
| 14 | 55.32 2.178 | 51.51±0.18 2.028±.007 | 5 & 6 9 & 10 |
| 15 | 59.28 2.334 | 55.47±0.18 2.184±.007 | 5 & 6 10 & 11 |
| 16 | 63.25 2.490 | 59.44±0.18 2.340±.007 | 5 & 6 11 & 12 |
| 17 | 67.21 2.646 | 63.40±0.20 2.496±.008 | 6 & 7 11 & 12 |
| 18 | 71.17 2.802 | 67.36±0.20 2.652±.008 | 6 & 7 12 & 13 |

- NOTES:
 1. MATERIAL: HEADER-GLASS FILLED POLYESTER, 94V-0, MOLDED NATURAL (WHITE).
 2. FINISH:
 (154-TIN) OVERALL TIN: 0.00254/.000100 MIN.
 OVER 0.00127/.000050 MIN NICKEL.
 (197-TIN) OVERALL REFLOWED MATTE TIN: 0.00152/.000060 MIN.
 OVER 0.00127/.000050 MIN. NICKEL OVERALL.
 (222-TIN) OVERALL MATTE TIN: 0.00254/.000100 MIN.
 OVER 0.00127/.000050 MIN NICKEL.
 (208-15 GOLD) SELECT GOLD: 0.00038/.000015 MIN. SELECT TIN: 0.00254/.000100 MIN.
 OVERALL NICKEL UNDERPLATE: 0.00127/.000050 MIN.
 (228-30 GOLD) SELECT GOLD: 0.00076/.000030 MIN. SELECT TIN: 0.00254/.000100 MIN.
 OVERALL NICKEL UNDERPLATE: 0.00127/.000050 MIN.
 (241-20 GOLD) 0.00051/.000020 MIN.
 SELECT TIN: 0.00254/.000100 MIN.
 OVERALL NICKEL UNDERPLATE: 0.00127/.000050 MIN.
 3. PRODUCT SPECIFICATION AND PROCESS PARAMETERS: SEE PS-08-50.
 4. PACKAGING INFORMATION: SEE CHARTS.
 5. SOLDERABILITY: PER SMES-152.
 6. PIN PUSH-OUT FORCE: PRIOR TO SOLDERING, A 3 LB. MINIMUM FORCE (IN EITHER DIRECTION)
 7. PARTS ARE STACKABLE END TO END ON 3.96/.156 CENTERS.
 8. THIS PART CONFORMS TO CLASS B REQUIREMENTS OF COSMETIC SPECIFICATION PS-45499-002.
 9. SLOTS ON BACKWALL ARE BETWEEN CIRCUITS, SEE CHART FOR LOCATION.
 10 FEATURE MAY OR MAY NOT EXTEND ACROSS THE ENTIRE FACE OF THE PART "SEE DETAIL Z".



| | |
|-----|-----|
| 2-* | Q6 |
| 1 | Q6 |
| SHT | REV |

| |
|--------------------------|
| ADD PART NUMBERS |
| EC NO: UCP2015-4098 |
| DRW:WKIPPER 2015/04/06 |
| CHKD:ANDERSON 2015/04/06 |
| APPR:FSMITH 2015/05/19 |
| Q6 |

| |
|-----------------|
| QUALITY SYMBOLS |
| ▽=0 |
| ▽=0 |
| ▽=0 |

| |
|--|
| GENERAL TOLERANCES (UNLESS SPECIFIED) |
| 4 PLACES ± --- ± --- |
| 3 PLACES ± --- ± .010 |
| 2 PLACES ± 0.25 ± .015 |
| 1 PLACE ± 0.38 ± --- |
| 0 PLACE ± ± |
| ANGULAR ±1/2° |
| DRAFT WHERE APPLICABLE MUST REMAIN WITHIN DIMENSIONS |

| |
|-------------------|
| DIMENSION STYLE |
| MM/IN |
| DRAWN BY DATE |
| JSCHAFER 11-07-03 |
| CHECKED BY DATE |
| KSAMIEC 11-10-03 |
| APPROVED BY DATE |
| MARGULIS 11-17-03 |
| MATERIAL NO. |
| SEE CHART |
| SIZE B |

| |
|-------------------------|
| SCALE |
| 2:1 |
| DESIGN UNITS |
| INCH |
| THIRD ANGLE PROJECTION |
| TITLE |
| KK 156 HEADER ASSEMBLY |
| FRICITION LOCK VERTICAL |
| SOLID BODY W/O PEGS |
| molex |
| DOCUMENT NO. |
| SDA-41791 |

| |
|---|
| SHEET NO. |
| 1 OF * |
| THIS DRAWING CONTAINS INFORMATION THAT IS PROPRIETARY TO MOLEX INCORPORATED AND SHOULD NOT BE USED WITHOUT WRITTEN PERMISSION |

| OPTIONS | Group | A-41791-0002/0018 | Group | A-41791-0019/0035 | Group | A-41791-0036/0052 | Group | A-41791-0059/0074 |
|----------|--------------|-------------------|--------------|-------------------|--------------|-------------------|--------------|-------------------|
| | Header No: | 41790-0002/0018 | Header No: | 41790-0002/0018 | Header No: | 41790-0002/0018 | Header No: | 41790-0002/0018 |
| | Pin No: | 43294-0214 | Pin No: | 43294-0215 | Pin No: | 43294-0214 | Pin No: | 43294-0214 |
| | Plating: | 197 – TIN | Plating: | 241 – GOLD | Plating: | 197 – TIN | Plating: | 197 – TIN |
| | Pin Length L | 18.29 / .720 | Pin Length L | 18.29 / .720 | Pin Length L | 18.29 / .720 | Pin Length L | 18.29 / .720 |
| | Mating M | 11.43 / .450 | Mating M | 11.43 / .450 | Mating M | 11.43 / .450 | Mating M | 11.43 / .450 |
| | Gold Loc G | N/A | Gold Loc G | 6.85/ .270 | Gold Loc G | N/A | Gold Loc G | N/A |
| | PC Tail P | 3.56 / .140 | PC Tail P | 3.56 / .140 | PC Tail P | 3.56 / .140 | PC Tail P | 3.56 / .140 |
| | Tin Loc T | OVERALL | Tin Loc T | 4.06/ .160 | Tin Loc T | OVERALL | Tin Loc T | OVERALL |
| | Voided Ckts | NONE | Voided Ckts | NONE | Voided Ckts | 2 | Voided Ckts | 3 |
| Pack Per | PK-41791-001 | Pack Per | PK-41791-001 | Pack Per | PK-41791-001 | Pack Per | PK-41791-001 | |
| Ckts | Material No | Engineer Number | Material No | Engineer Number | Material No | Engineer Number | Material No | Engineer Number |
| 2 | 26-60-4020 | A-41791-0002 | 26-61-4020 | A-41791-0019 | 26-62-4020 | A-41791-0036 | | |
| 3 | 26-60-4030 | A-41791-0003 | 26-61-4030 | A-41791-0020 | 26-62-4030 | A-41791-0037 | 26-62-4036 | A-41791-0059 |
| 4 | 26-60-4040 | A-41791-0004 | 26-61-4040 | A-41791-0021 | 26-62-4040 | A-41791-0038 | 26-62-4046 | A-41791-0060 |
| 5 | 26-60-4050 | A-41791-0005 | 26-61-4050 | A-41791-0022 | 26-62-4050 | A-41791-0039 | 26-62-4056 | A-41791-0061 |
| 6 | 26-60-4060 | A-41791-0006 | 26-61-4060 | A-41791-0023 | 26-62-4060 | A-41791-0040 | 26-62-4066 | A-41791-0062 |
| 7 | 26-60-4070 | A-41791-0007 | 26-61-4070 | A-41791-0024 | 26-62-4070 | A-41791-0041 | 26-62-4076 | A-41791-0063 |
| 8 | 26-60-4080 | A-41791-0008 | 26-61-4080 | A-41791-0025 | 26-62-4080 | A-41791-0042 | 26-62-4086 | A-41791-0064 |
| 9 | 26-60-4090 | A-41791-0009 | 26-61-4090 | A-41791-0026 | 26-62-4090 | A-41791-0043 | 26-62-4096 | A-41791-0065 |
| 10 | 26-60-4100 | A-41791-0010 | 26-61-4100 | A-41791-0027 | 26-62-4100 | A-41791-0044 | 26-62-4106 | A-41791-0066 |
| 11 | 26-60-4110 | A-41791-0011 | 26-61-4110 | A-41791-0028 | 26-62-4110 | A-41791-0045 | 26-62-4116 | A-41791-0067 |
| 12 | 26-60-4120 | A-41791-0012 | 26-61-4120 | A-41791-0029 | 26-62-4120 | A-41791-0046 | 26-62-4126 | A-41791-0068 |
| 13 | 26-60-4130 | A-41791-0013 | 26-61-4130 | A-41791-0030 | 26-62-4130 | A-41791-0047 | 26-62-4136 | A-41791-0069 |
| 14 | 26-60-4140 | A-41791-0014 | 26-61-4140 | A-41791-0031 | 26-62-4140 | A-41791-0048 | 26-62-4146 | A-41791-0070 |
| 15 | 26-60-4150 | A-41791-0015 | 26-61-4150 | A-41791-0032 | 26-62-4150 | A-41791-0049 | 26-62-4156 | A-41791-0071 |
| 16 | 26-60-4160 | A-41791-0016 | 26-61-4160 | A-41791-0033 | 26-62-4160 | A-41791-0050 | 26-62-4166 | A-41791-0072 |
| 17 | 26-60-4170 | A-41791-0017 | 26-61-4170 | A-41791-0034 | 26-62-4170 | A-41791-0051 | 26-62-4176 | A-41791-0073 |
| 18 | 26-60-4180 | A-41791-0018 | 26-61-4180 | A-41791-0035 | 26-62-4180 | A-41791-0052 | 26-62-4186 | A-41791-0074 |

| | | | |
|---------------------------------------|---|--|-------------------------------|
| REV: Q6 | ECR/ECN INFORMATION | TITLE: KK 156 HEADER ASSEMBLY FRICTION LOCK VERTICAL SOLID BODY W/O PEGS | SHEET No. - 2 - |
| | EC NO.: UCP2015-4098 DATE: 5/22/2015 | | |
| DOCUMENT NUMBER: SDA- 41791 | CREATED / REVISED BY: MKIPPER | CHECKED BY: BANDERSON | APPROVED BY: FSMITH |

| | | | | | | | | |
|----------|--------------|-------------------|--------------|-------------------|--------------|-------------------|--------------|-------------------|
| OPTIONS | Group | A-41791-0086/0100 | Group | A-41791-0309/0308 | Group | A-41791-0464/0480 | Group | A-41791-0481/0491 |
| | Header No: | 41790-0002/0018 | Header No: | 41790-0002/0018 | Header No: | 41790-0002/0018 | Header No: | 41790-0002/0012 |
| | Pin No: | 43294-0214 | Pin No: | 43294-0215 | Pin No: | 43294-0240 | Pin No: | 43294-0355 |
| | Plating: | 197 – TIN | Plating: | 241 – GOLD | Plating: | 197 – TIN | Plating: | 154 – TIN |
| | Pin Length L | 18.29 / .720 | Pin Length L | 18.29 / .720 | Pin Length L | 19.05 / .750 | Pin Length L | 22.35 / .880 |
| | Mating M | 11.43 / .450 | Mating M | 11.43 / .450 | Mating M | 11.43 / .450 | Mating M | 11.56 / .455 |
| | Gold Loc G | N/A | Gold Loc G | 6.85/ .270 | Gold Loc G | N/A | Gold Loc G | N/A |
| | PC Tail P | 3.56 / .140 | PC Tail P | 3.56 / .140 | PC Tail P | 4.32 / .170 | PC Tail P | 7.49 / .295 |
| | Tin Loc T | OVERALL | Tin Loc T | 4.06/ .160 | Tin Loc T | OVERALL | Tin Loc T | OVERALL |
| | Voided Ckts | 2, 4 | Voided Ckts | 2 | Voided Ckts | NONE | Voided Ckts | NONE |
| Pack Per | PK-41791-001 | Pack Per | PK-41791-001 | Pack Per | PK-41791-001 | Pack Per | PK-41791-002 | |
| Ckts | Material No | Engineer Number | Material No | Engineer Number | Material No | Engineer Number | Material No | Engineer Number |
| 2 | | | | | 26-60-4023 | A-41791-0464 | 41791-0481 | A-41791-0481 |
| 3 | | | 26-63-4031 | A-41791-0310 | 26-60-4033 | A-41791-0465 | 41791-0482 | A-41791-0482 |
| 4 | 26-62-4041 | A-41791-0086 | | A-41791-0311 | 26-60-4043 | A-41791-0466 | 41791-0483 | A-41791-0483 |
| 5 | 26-62-4051 | A-41791-0087 | 26-63-4051 | A-41791-0312 | 26-60-4053 | A-41791-0467 | 41791-0484 | A-41791-0484 |
| 6 | 26-62-4061 | A-41791-0088 | 26-63-4061 | A-41791-0313 | 26-60-4063 | A-41791-0468 | 41791-0485 | A-41791-0485 |
| 7 | | A-41791-0089 | 26-63-4071 | A-41791-0314 | 26-60-4073 | A-41791-0469 | 41791-0486 | A-41791-0486 |
| 8 | | A-41791-0090 | | A-41791-0315 | 26-60-4083 | A-41791-0470 | 41791-0487 | A-41791-0487 |
| 9 | | A-41791-0091 | | A-41791-0316 | 26-60-4093 | A-41791-0471 | 41791-0488 | A-41791-0488 |
| 10 | 26-62-4101 | A-41791-0092 | | A-41791-0317 | 26-60-4103 | A-41791-0472 | 41791-0489 | A-41791-0489 |
| 11 | | A-41791-0093 | | A-41791-0318 | 26-60-4113 | A-41791-0473 | 41791-0490 | A-41791-0490 |
| 12 | | A-41791-0094 | | A-41791-0319 | 26-60-4123 | A-41791-0474 | 41791-0491 | A-41791-0491 |
| 13 | | A-41791-0095 | | A-41791-0320 | 26-60-4133 | A-41791-0475 | | |
| 14 | | A-41791-0096 | | A-41791-0321 | 26-60-4143 | A-41791-0476 | | |
| 15 | | A-41791-0097 | | A-41791-0322 | 26-60-4153 | A-41791-0477 | | |
| 16 | | A-41791-0098 | | A-41791-0323 | 26-60-4163 | A-41791-0478 | | |
| 17 | | A-41791-0099 | | A-41791-0324 | 26-60-4173 | A-41791-0479 | | |
| 18 | | A-41791-0100 | | A-41791-0325 | 26-60-4183 | A-41791-0480 | | |

| | | | | |
|--|------------------------------------|--|---|--------------------------------------|
| REV: Q6 | <u>ECR/ECN INFORMATION</u> | | <u>TITLE:</u> KK 156 HEADER ASSEMBLY FRICTION LOCK VERTICAL SOLID BODY W/O PEGS | <u>SHEET No.</u> - 3 - |
| | <u>EC NO.:</u> UCP2015-4098 | <u>DATE:</u> 5/22/2015 | | |
| <u>DOCUMENT NUMBER:</u> SDA- 41791 | | <u>CREATED / REVISED BY:</u> MKIPPER | <u>CHECKED BY:</u> BANDERSON | <u>APPROVED BY:</u> FSMITH |

| OPTIONS | Group | A-41791-0583/0597 | Group | A-41791-0598/0609 | Group | A-41791-0638/0653 | Group | A-41791-0773/0785 |
|----------|--------------|-------------------|--------------|-------------------|--------------|-------------------|--------------|-------------------|
| | Header No: | 41790-0002/0018 | Header No: | 41790-0002/0018 | Header No: | 41790-0002/0018 | Header No: | 41790-0006/0018 |
| | Pin No: | 43294-0214 | Pin No: | 43294-0214 | Pin No: | 43294-0215 | Pin No: | 43294-0214 |
| | Plating: | 197 – TIN | Plating: | 197 – TIN | Plating: | 241 – GOLD | Plating: | 197-TIN |
| | Pin Length L | 18.29 / .720 | Pin Length L | 18.29 / .720 | Pin Length L | 18.29 / .720 | Pin Length L | 18.29/.720 |
| | Mating M | 11.43 / .450 | Mating M | 11.43 / .450 | Mating M | 11.43 / .450 | Mating M | 11.43/.450 |
| | Gold Loc G | N/A | Gold Loc G | N/A | Gold Loc G | 6.85/ .270 | Gold Loc G | N/A |
| | PC Tail P | 3.56 / .140 | PC Tail P | 3.56 / .140 | PC Tail P | 3.56 / .140 | PC Tail P | 3.56/.140 |
| | Tin Loc T | OVERALL | Tin Loc T | OVERALL | Tin Loc T | 4.06/ .160 | Tin Loc T | OVERALL |
| | Voided Ckts | 4 | Voided Ckts | 7 | Voided Ckts | 3 | Voided Ckts | 3, 6 |
| Pack Per | PK-41791-001 | Pack Per | PK-41791-001 | Pack Per | PK-41791-001 | Pack Per | PK-41791-001 | |
| Ckts | Material No | Engineer Number | Material No | Engineer Number | Material No | Engineer Number | Item Number | |
| 2 | | | | | | | | |
| 3 | | | | | | | | |
| 4 | 27-62-4049 | A-41791-0583 | | | 26-63-4032 | A-41791-0638 | | |
| 5 | 27-62-4059 | A-41791-0584 | | | 41791-0639 | A-41791-0639 | | |
| 6 | 27-62-4069 | A-41791-0585 | | | 26-63-4052 | A-41791-0640 | | |
| 7 | 27-62-4079 | A-41791-0586 | 41791-0598 | A-41791-0598 | 26-63-4062 | A-41791-0641 | | |
| 8 | 27-62-4089 | A-41791-0587 | 41791-0599 | A-41791-0599 | 41791-0642 | A-41791-0642 | 41791-0774 | |
| 9 | 27-62-4099 | A-41791-0588 | 27-66-4090 | A-41791-0600 | 26-63-4082 | A-41791-0643 | | |
| 10 | 27-62-4109 | A-41791-0589 | 41791-0601 | A-41791-0601 | 41791-0644 | A-41791-0644 | | |
| 11 | 27-62-4119 | A-41791-0590 | 41791-0602 | A-41791-0602 | 41791-0645 | A-41791-0645 | | |
| 12 | 27-62-4129 | A-41791-0591 | 41791-0603 | A-41791-0603 | 41791-0646 | A-41791-0646 | | |
| 13 | 27-62-4139 | A-41791-0592 | 41791-0604 | A-41791-0604 | 41791-0647 | A-41791-0647 | | |
| 14 | 27-62-4149 | A-41791-0593 | 41791-0605 | A-41791-0605 | 41791-0648 | A-41791-0648 | | |
| 15 | 27-62-4159 | A-41791-0594 | 41791-0606 | A-41791-0606 | 41791-0649 | A-41791-0649 | | |
| 16 | 27-62-4169 | A-41791-0595 | 41791-0607 | A-41791-0607 | 41791-0650 | A-41791-0650 | | |
| 17 | 27-62-4179 | A-41791-0596 | 41791-0608 | A-41791-0608 | 41791-0651 | A-41791-0651 | | |
| 18 | 27-62-4189 | A-41791-0597 | 41791-0609 | A-41791-0609 | 41791-0652 | A-41791-0652 | | |
| | | | | | 41791-0653 | A-41791-0653 | | |

| | | | | | |
|-------------------------|------|------------------------------|--------------------|--|------------------|
| Q6 | REV: | <u>ECR/ECN INFORMATION</u> | <u>TITLE:</u> | KK 156 HEADER ASSEMBLY FRICTION LOCK VERTICAL SOLID BODY W/O PEGS | <u>SHEET No.</u> |
| | | EC NO.: UCP2015-4098 | | | - 4 - |
| | | DATE: 5/22/2015 | | | |
| <u>DOCUMENT NUMBER:</u> | | <u>CREATED / REVISED BY:</u> | <u>CHECKED BY:</u> | <u>APPROVED BY:</u> | |
| SDA- 41791 | | MKIPPER | BANDERSON | FSMITH | |

| OPTIONS | Group | A-41791-0815/0831 | Group | A-41791-0832/0848 | Group | A-41791-0849/0865 | Group | A-41791-0883/0891 |
|----------|--------------|-------------------|-----------------|-------------------|-----------------|-------------------|--------------|-------------------|
| | Header No: | 41790-0002/0018 | Header No: | 41790-0002/0018 | Header No: | 41790-0002/0018 | Header No: | 41790-0010/0018 |
| | Pin No: | 43294-0661 | Pin No: | 43294-0209 | Pin No: | 43294-0210 | Pin No: | 43294-0214 |
| | Plating: | 197 – TIN | Plating: | 208 – 15 GOLD | Plating: | 228 – 30 GOLD | Plating: | 197 – TIN |
| | Pin Length L | 30.48 / 1.200 | Pin Length L | 18.29/. 720 | Pin Length L | 18.29/. 720 | Pin Length L | 18.29 / .720 |
| | Mating M | 11.43 / .450 | Mating M | 11.43/. 450 | Mating M | 11.43/. 450 | Mating M | 11.43 / .450 |
| | Gold Loc G | N/A | Gold Loc G | 6.86/. 270 | Gold Loc G | 6.86/. 270 | Gold Loc G | N/A |
| | PC Tail P | 15.75/ .620 | PC Tail P | 3.56/. 140 | PC Tail P | 3.56/. 140 | PC Tail P | 3.56 / .140 |
| | Tin Loc T | OVERALL | Tin Loc T | 4.06/. 160 | Tin Loc T | 4.06/. 160 | Tin Loc T | OVERALL |
| | Voided Ckts | NONE | Voided Ckts | NONE | Voided CKts | NONE | Voided Ckts | 10 |
| Pack Per | PK-41791-003 | Pack Per | PK-41791-001 | Pack Per | PK-41791-001 | Pack Per | PK-41791-001 | |
| Ckts | Item Number | Material No | Engineer Number | Material No | Engineer Number | Item Number | | |
| 2 | 41791-0815 | 41791-0832 | A-41791-0832 | 41791-0849 | A-41791-0849 | | | |
| 3 | 41791-0816 | 41791-0833 | A-41791-0833 | 41791-0850 | A-41791-0850 | | | |
| 4 | 41791-0817 | 41791-0834 | A-41791-0834 | 41791-0851 | A-41791-0851 | | | |
| 5 | 41791-0818 | 41791-0835 | A-41791-0835 | 41791-0852 | A-41791-0852 | | | |
| 6 | 41791-0819 | 41791-0836 | A-41791-0836 | 41791-0853 | A-41791-0853 | | | |
| 7 | 41791-0820 | 41791-0837 | A-41791-0837 | 41791-0854 | A-41791-0854 | | | |
| 8 | 41791-0821 | 41791-0838 | A-41791-0838 | 41791-0855 | A-41791-0855 | | | |
| 9 | 41791-0822 | 41791-0839 | A-41791-0839 | 41791-0856 | A-41791-0856 | | | |
| 10 | 41791-0823 | 41791-0840 | A-41791-0840 | 41791-0857 | A-41791-0857 | 41791-0883 | | |
| 11 | 41791-0824 | 41791-0841 | A-41791-0841 | 41791-0858 | A-41791-0858 | 41791-0884 | | |
| 12 | 41791-0825 | 41791-0842 | A-41791-0842 | 41791-0859 | A-41791-0859 | 41791-0885 | | |
| 13 | 41791-0826 | 41791-0843 | A-41791-0843 | 41791-0860 | A-41791-0860 | 41791-0886 | | |
| 14 | 41791-0827 | 41791-0844 | A-41791-0844 | 41791-0861 | A-41791-0861 | 41791-0887 | | |
| 15 | 41791-0828 | 41791-0845 | A-41791-0845 | 41791-0862 | A-41791-0862 | 41791-0888 | | |
| 16 | 41791-0829 | 41791-0846 | A-41791-0846 | 41791-0863 | A-41791-0863 | 41791-0889 | | |
| 17 | 41791-0830 | 41791-0847 | A-41791-0847 | 41791-0864 | A-41791-0864 | 41791-0890 | | |
| 18 | 41791-0831 | 41791-0848 | A-41791-0848 | 41791-0865 | A-41791-0865 | 41791-0891 | | |

| | | | |
|---------------------------------------|---|--|-------------------------------|
| Q6 | REV: <u>ECR/ECN INFORMATION</u> | KK 156 HEADER ASSEMBLY FRICTION LOCK VERTICAL SOLID BODY W/O PEGS | SHEET No. |
| | EC NO.: UCP2015-4098 | | - 5 - |
| | DATE: 5/22/2015 | | |
| DOCUMENT NUMBER: SDA- 41791 | CREATED / REVISED BY: MKIPPER | CHECKED BY: BANDERSON | APPROVED BY: FSMITH |

| OPTIONS | Group | A-41791-0892/0908 | Group | A-41791-0922/0933 | Group | 41791-0934/0948 | Group | 41791-0966/0976 |
|----------|--------------|-------------------|--------------|-------------------|--------------|-----------------|--------------|-----------------|
| | Header No: | 41790-0002/0018 | Header No: | 41790-0007/0018 | Header No: | 41790-0004/0018 | Header No: | 41790-0007/0018 |
| | Pin No: | 43294-0299 | Pin No: | 43294-0214 | Pin No: | 43294-0209 | Pin No: | 43294-0214 |
| | Plating: | 208 – 15 GOLD | Plating: | 197 – TIN | Plating: | 208 – 15 GOLD | Plating: | 197 – TIN |
| | Pin Length L | 20.83 / .820 | Pin Length L | 18.29 / .720 | Pin Length L | 18.29/ .720 | Pin Length L | 18.29/ .720 |
| | Mating M | 11.43 / .450 | Mating M | 11.43 / .450 | Mating M | 11.43 / .450 | Mating M | 11.43/ .450 |
| | Gold Loc G | 6.83/ .270 | Gold Loc G | N/A | Gold Loc G | 6.86/ .270 | Gold Loc G | N/A |
| | PC Tail P | 6.10/ .240 | PC Tail P | 3.56 / .140 | PC Tail P | 3.56/ .140 | PC Tail P | 3.56/ .140 |
| | Tin Loc T | 6.35/ .250 | Tin Loc T | OVERALL | Tin Loc T | 4.06/ .160 | Tin Loc T | OVERALL |
| | Voided Ckts | NONE | Voided Ckts | 5, 7 | Voided Ckts | 4 | Voided Ckts | 3, 7, 8 |
| Pack Per | PK-41791-002 | Pack Per | PK-41791-001 | Pack Per | PK-41791-001 | Pack Per | PK-41791-001 | |
| Ckts | Item Number | | Item Number | | Item Number | | Item Number | |
| 2 | 41791-0892 | | | | | | | |
| 3 | 41791-0893 | | | | | | | |
| 4 | 41791-0894 | | | | 41791-0934 | | | |
| 5 | 41791-0895 | | | | 41791-0935 | | | |
| 6 | 41791-0896 | | | | 41791-0936 | | | |
| 7 | 41791-0897 | | 41791-0922 | | 41791-0937 | | | |
| 8 | 41791-0898 | | 41791-0923 | | 41791-0938 | | 41791-0966 | |
| 9 | 41791-0899 | | 41791-0924 | | 41791-0939 | | 41791-0967 | |
| 10 | 41791-0900 | | 41791-0925 | | 41791-0940 | | 41791-0968 | |
| 11 | 41791-0901 | | 41791-0926 | | 41791-0941 | | 41791-0969 | |
| 12 | 41791-0902 | | 41791-0927 | | 41791-0942 | | 41791-0970 | |
| 13 | 41791-0903 | | 41791-0928 | | 41791-0943 | | 41791-0971 | |
| 14 | 41791-0904 | | 41791-0929 | | 41791-0944 | | 41791-0972 | |
| 15 | 41791-0905 | | 41791-0930 | | 41791-0945 | | 41791-0973 | |
| 16 | 41791-0906 | | 41791-0931 | | 41791-0946 | | 41791-0974 | |
| 17 | 41791-0907 | | 41791-0932 | | 41791-0947 | | 41791-0975 | |
| 18 | 41791-0908 | | 41791-0933 | | 41791-0948 | | 41791-0976 | |

| | | | | |
|---------------------------------------|---------------------------------|---|--|-------------------------------|
| Q6 | REV: <u>ECR/ECN INFORMATION</u> | TITLE: | KK 156 HEADER ASSEMBLY FRICTION LOCK VERTICAL SOLID BODY W/O PEGS | SHEET No. |
| | EC NO.: UCP2015-4098 | | | - 6 - |
| | DATE: 5/22/2015 | | | |
| DOCUMENT NUMBER: SDA- 41791 | | CREATED / REVISED BY: MKIPPER | CHECKED BY: BANDERSON | APPROVED BY: FSMITH |

| OPTIONS | Group | 41791-0977/0993 | Group | 41791-0994/1002 | Group | A-41791-1036 / 1048 | Group | A-41791-1049/1062 |
|----------|--------------|-----------------|--------------|-------------------|--------------|---------------------|--------------|-------------------|
| | Header No: | 41790-0002/0018 | Header No: | 41790-0010/0018 | Header No: | 41790-0006 / 0018 | Header No: | 41790-0005/0018 |
| | Pin No: | 43294-0345 | Pin No: | 43294-0209 | Pin No: | 43294-0214 | Pin No: | 43294-0214 |
| | Plating: | 228 – 30 GOLD | Plating: | 208 – 15 GOLD | Plating: | 197 – TIN | Plating: | 197 – TIN |
| | Pin Length L | 22.10/. 870 | Pin Length L | 18.29/. 720 | Pin Length L | 18.29 / .720 | Pin Length L | 18.29 / .720 |
| | Mating M | 11.43/. 450 | Mating M | 11.43 / .450 | Mating M | 11.43 / .450 | Mating M | 11.43 / .450 |
| | Gold Loc G | 10.02/. 400 | Gold Loc G | 6.86/ .270 | Gold Loc G | N/A | Gold Loc G | N/A |
| | PC Tail P | 7.37/. 290 | PC Tail P | 3.56/. 140 | PC Tail P | 3.56 / .140 | PC Tail P | 3.56 / .140 |
| | Tin Loc T | 5.08/. 200 | Tin Loc T | 4.06/. 160 | Tin Loc T | OVERALL | Tin Loc T | OVERALL |
| | Voided Ckts | None | Voided Ckts | 3, 4, 5, 8, 9, 10 | Voided Ckts | 4, 6 | Voided Ckts | 2, 5 |
| Pack Per | PK-41791-002 | Pack Per | PK-41791-001 | Pack Per | PK-41791-001 | Pack Per | PK-41791-001 | |
| Ckts | Item Number | Item Number | Material No | Engineer Number | Item Number | | | |
| 2 | 41791-0977 | | | | | | | |
| 3 | 41791-0978 | | | | | | | |
| 4 | 41791-0979 | | | | | | | |
| 5 | 41791-0980 | | | | | | | |
| 6 | 41791-0981 | | | A-41791-1036 | | | | |
| 7 | 41791-0982 | | 41791-1037 | A-41791-1037 | 41791-1051 | | | |
| 8 | 41791-0983 | | 41791-1038 | A-41791-1038 | | | | |
| 9 | 41791-0984 | | | A-41791-1039 | | | | |
| 10 | 41791-0985 | 41791-0994 | | A-41791-1040 | | | | |
| 11 | 41791-0986 | 41791-0995 | | A-41791-1041 | | | | |
| 12 | 41791-0987 | 41791-0996 | | A-41791-1042 | | | | |
| 13 | 41791-0988 | 41791-0997 | | A-41791-1043 | | | | |
| 14 | 41791-0989 | 41791-0998 | | A-41791-1044 | | | | |
| 15 | 41791-0990 | 41791-0999 | | A-41791-1045 | | | | |
| 16 | 41791-0991 | 41791-1000 | | A-41791-1046 | | | | |
| 17 | 41791-0992 | 41791-1001 | | A-41791-1047 | | | | |
| 18 | 41791-0993 | 41791-1002 | | A-41791-1048 | | | | |

| | | | | | |
|-------------------|------|-----------------------------|------------------|--|--------------|
| Q6 | REV: | ECR/ECN INFORMATION | TITLE: | KK 156 HEADER ASSEMBLY FRICTION LOCK VERTICAL SOLID BODY W/O PEGS | SHEET No. |
| | | EC NO.: UCP2015-4098 | | | - 7 - |
| | | DATE: 5/22/2015 | | | |
| DOCUMENT NUMBER: | | CREATED / REVISED BY: | CHECKED BY: | APPROVED BY: | |
| SDA- 41791 | | MKIPPER | BANDERSON | FSMITH | |

| | | | | | | | | |
|----------|--------------|-------------------|--------------|-------------------|--------------|-------------------|--------------|-----------------|
| OPTIONS | Group | A-41791-1063/1071 | Group | A-41791-1074/1088 | Group | A-41791-1089/1105 | Group | A-41791-1107 |
| | Header No: | 41790-0010/0018 | Header No: | 41790-0004/0018 | Header No: | 41790-0002/0018 | Header No: | 41790-0006/0018 |
| | Pin No: | 43294-0214 | Pin No: | 43294-0215 | Pin No: | 43294-0212 | Pin No: | 43294-0213 |
| | Plating: | 197 – TIN | Plating: | 241 – GOLD | Plating: | 222 – TIN | Plating: | 154 – TIN |
| | Pin Length L | 18.29 / .720 | Pin Length L | 18.29 / .720 | Pin Length L | 18.29 / .720 | Pin Length L | 18.29 / .720 |
| | Mating M | 11.43 / .450 | Mating M | 11.43 / .450 | Mating M | 11.43 / .450 | Mating M | 11.43 / .450 |
| | Gold Loc G | N/A | Gold Loc G | 6.85/ .270 | Gold Loc G | N/A | Gold Loc G | N/A |
| | PC Tail P | 3.56 / .140 | PC Tail P | 3.56 / .140 | PC Tail P | 3.56 / .140 | PC Tail P | 3.56 / .140 |
| | Tin Loc T | OVERALL | Tin Loc T | 4.06/ .160 | Tin Loc T | OVERALL | Tin Loc T | OVERALL |
| | Voided Ckts | 5, 10 | Voided Ckts | 2, 3, 4 | Voided Ckts | NONE | Voided Ckts | 6 |
| Pack Per | PK-41791-001 | Pack Per | PK-41791-001 | Pack Per | PK-41791-001 | Pack Per | PK-41791-001 | |
| Ckts | Item Number | | Item Number | | Item Number | | Item Number | |
| 2 | | | | | 41791-1089 | | | |
| 3 | | | | | 41791-1090 | | | |
| 4 | | | | | 41791-1091 | | | |
| 5 | | | 41791-1075 | | | | | |
| 6 | | | | | 41791-1093 | | | |
| 7 | | | | | | | 41791-1107 | |
| 8 | | | | | 41791-1095 | | | |
| 9 | | | | | 41791-1096 | | | |
| 10 | | | | | 41791-1097 | | | |
| 11 | 41791-1064 | | | | 41791-1098 | | | |
| 12 | | | | | 41791-1099 | | | |
| 13 | | | | | | | | |
| 14 | | | | | | | | |
| 15 | | | | | | | | |
| 16 | | | | | 41791-1103 | | | |
| 17 | | | | | | | | |
| 18 | | | | | 41791-1105 | | | |

| | | | | | | | |
|-------------------|------|-----------------------------|--------|--|--------------|---------------|--|
| Q6 | REV: | ECR/ECN INFORMATION | TITLE: | KK 156 HEADER ASSEMBLY FRICTION LOCK VERTICAL SOLID BODY W/O PEGS | SHEET No. | | |
| | | EC NO.: UCP2015-4098 | | | - 8 - | | |
| | | DATE: 5/22/2015 | | | | | |
| DOCUMENT NUMBER: | | CREATED / REVISED BY: | | CHECKED BY: | | APPROVED BY: | |
| SDA- 41791 | | MKIPPER | | BANDERSON | | FSMITH | |

| | | | | | | | | |
|---------|--------------|--------------|--------------|--------------|--------------|---------------|--------------|--------------|
| OPTIONS | Group | A-41791-1120 | Group | A-41791-1134 | Group | A-41791-1150 | Group | A-41791-1165 |
| | Header No: | 41790-0006 | Header No: | 41790-0004 | Header No: | 41790-0005 | Header No: | 41790-0006 |
| | Pin No: | 43294-0213 | Pin No: | 43294-0213 | Pin No: | 43294-0210 | Pin No: | 43294-0239 |
| | Plating: | 154 – TIN | Plating: | 154 – TIN | Plating: | 228 – 30 GOLD | Plating: | 154 – TIN |
| | Pin Length L | 18.29 / .720 | Pin Length L | 18.29 / .720 | Pin Length L | 18.29/. 720 | Pin Length L | 19.05 / .750 |
| | Mating M | 11.43 / .450 | Mating M | 11.43 / .450 | Mating M | 11.43/. 450 | Mating M | 11.43 / .450 |
| | Gold Loc G | N/A | Gold Loc G | N/A | Gold Loc G | 6.85/. 270 | Gold Loc G | N/A |
| | PC Tail P | 3.56 / .140 | PC Tail P | 3.56 / .140 | PC Tail P | 3.56/. 140 | PC Tail P | 4.32 / .170 |
| | Tin Loc T | OVERALL | Tin Loc T | OVERALL | Tin Loc T | 4.06/. 160 | Tin Loc T | OVERALL |
| | Voided Ckts | 2, 5 | Voided Ckts | 2, 3 | Voided Ckts | 2, 4 | Voided Ckts | 2, 3, 5 |
| | Pack Per | PK-41791-001 | Pack Per | PK-41791-001 | Pack Per | PK-41791-001 | Pack Per | PK-41791-001 |
| Ckts | Item Number | | Item Number | | Item Number | | Item Number | |
| 2 | | | | | | | | |
| 3 | | | | | | | | |
| 4 | | | 41791-1134 | | | | | |
| 5 | | | | | 41791-1150 | | | |
| 6 | 41791-1120 | | | | | | 41791-1165 | |
| 7 | | | | | | | | |
| 8 | | | | | | | | |
| 9 | | | | | | | | |
| 10 | | | | | | | | |
| 11 | | | | | | | | |
| 12 | | | | | | | | |
| 13 | | | | | | | | |
| 14 | | | | | | | | |
| 15 | | | | | | | | |
| 16 | | | | | | | | |
| 17 | | | | | | | | |
| 18 | | | | | | | | |

| | | | | | | | |
|-------------------|------|-----------------------------|--------|--|--------------|---------------|--|
| Q6 | REV: | ECR/ECN INFORMATION | TITLE: | KK 156 HEADER ASSEMBLY FRICTION LOCK VERTICAL SOLID BODY W/O PEGS | SHEET No. | | |
| | | EC NO.: UCP2015-4098 | | | - 9 - | | |
| | | DATE: 5/22/2015 | | | | | |
| DOCUMENT NUMBER: | | CREATED / REVISED BY: | | CHECKED BY: | | APPROVED BY: | |
| SDA- 41791 | | MKIPPER | | BANDERSON | | FSMITH | |

| | | | | | | | | |
|----------|--------------|-----------------|--------------|-----------------|--------------|-----------------|--------------|-----------------|
| OPTIONS | Group | A-41791-1179 | Group | A-41791-1189 | Group | A-41791-1203 | Group | A-41791-1215 |
| | Header No: | 41790-0008/0018 | Header No: | 41790-0006/0018 | Header No: | 41790-0009/0018 | Header No: | 41790-0006/0018 |
| | Pin No: | 43294-0214 | Pin No: | 43294-0240 | Pin No: | 43294-0240 | Pin No: | 43294-0240 |
| | Plating: | 197 – TIN | Plating: | 197 – TIN | Plating: | 197 – TIN | Plating: | 197 – TIN |
| | Pin Length L | 18.29 / .720 | Pin Length L | 19.05 / .750 | Pin Length L | 19.05 / .750 | Pin Length L | 19.05 / .750 |
| | Mating M | 11.43 / .450 | Mating M | 11.43 / .450 | Mating M | 11.43 / .450 | Mating M | 11.43 / .450 |
| | Gold Loc G | N/A | Gold Loc G | N/A | Gold Loc G | N/A | Gold Loc G | N/A |
| | PC Tail P | 3.56 / .140 | PC Tail P | 4.32 / .170 | PC Tail P | 4.32 / .170 | PC Tail P | 4.32 / .170 |
| | Tin Loc T | OVERALL | Tin Loc T | OVERALL | Tin Loc T | OVERALL | Tin Loc T | OVERALL |
| | Voided Ckts | 2,4,8 | Voided Ckts | 2,3,4,5 | Voided Ckts | 4,5,7,9 | Voided Ckts | 2,4,6 |
| Pack Per | PK-41791-001 | Pack Per | PK-41791-001 | Pack Per | PK-41791-001 | Pack Per | PK-41791-001 | |
| Ckts | Item Number | | Item Number | | Item Number | | Item Number | |
| 2 | | | | | | | | |
| 3 | | | | | | | | |
| 4 | | | | | | | | |
| 5 | | | | | | | | |
| 6 | | | 41791-1189 | | | | | |
| 7 | | | | | | | | |
| 8 | | | | | | | | |
| 9 | 41791-1179 | | | | | | 41791-1215 | |
| 10 | | | | | 41791-1203 | | | |
| 11 | | | | | | | | |
| 12 | | | | | | | | |
| 13 | | | | | | | | |
| 14 | | | | | | | | |
| 15 | | | | | | | | |
| 16 | | | | | | | | |
| 17 | | | | | | | | |
| 18 | | | | | | | | |

| | | | | | |
|---------------------------------------|------|---|---------------------------------|--|---------------|
| Q6 | REV: | ECR/ECN INFORMATION | TITLE: | KK 156 HEADER ASSEMBLY FRICTION LOCK VERTICAL SOLID BODY W/O PEGS | SHEET No. |
| | | EC NO.: UCP2015-4098 | | | - 10 - |
| | | DATE: 5/22/2015 | | | |
| DOCUMENT NUMBER: SDA- 41791 | | CREATED / REVISED BY: MKIPPER | CHECKED BY: BANDERSON | APPROVED BY: FSMITH | |

| | | | | | | | | |
|---------|--------------|-----------------|--------------|--------------|--------------|--------------|--------------|-------------------|
| OPTIONS | Group | A-41791-1228 | Group | A-41791-1240 | Group | A-41791-1256 | Group | A-41791-1264/1274 |
| | Header No: | 41790-0005/0018 | Header No: | 41790-0007 | Header No: | 41790-0012 | Header No: | 41790-0004/0014 |
| | Pin No: | 43294-0214 | Pin No: | 43294-0214 | Pin No: | 43294-0214 | Pin No: | 43294-0214 |
| | Plating: | 197 – TIN | Plating: | 197 – TIN | Plating: | 197 – TIN | Plating: | 197 – TIN |
| | Pin Length L | 18.29 / .720 | Pin Length L | 18.29 / .720 | Pin Length L | 18.29 / .720 | Pin Length L | 18.29 / .720 |
| | Mating M | 11.43 / .450 | Mating M | 11.43 / .450 | Mating M | 11.43 / .450 | Mating M | 11.43 / .450 |
| | Gold Loc G | N/A | Gold Loc G | N/A | Gold Loc G | N/A | Gold Loc G | N/A |
| | PC Tail P | 3.56 / .140 | PC Tail P | 3.56 / .140 | PC Tail P | 3.56 / .140 | PC Tail P | 3.56 / .140 |
| | Tin Loc T | OVERALL | Tin Loc T | OVERALL | Tin Loc T | OVERALL | Tin Loc T | OVERALL |
| | Voided Ckts | 4,5 | Voided Ckts | 2,3,5,6 | Voided Ckts | 8 | Voided Ckts | 2,3 |
| | Pack Per | PK-41791-001 | Pack Per | PK-41791-001 | Pack Per | PK-41791-001 | Pack Per | PK-41791-001 |
| Ckts | Item Number | | Item Number | | Item Number | | Item Number | |
| 2 | | | | | | | | |
| 3 | | | | | | | | |
| 4 | | | | | | | 41791-1264 | |
| 5 | | | | | | | | |
| 6 | | | | | | | | |
| 7 | | | 41791-1240 | | | | | |
| 8 | 41791-1228 | | | | | | | |
| 9 | | | | | | | | |
| 10 | | | | | | | | |
| 11 | | | | | | | | |
| 12 | | | | | 41791-1256 | | | |
| 13 | | | | | | | | |
| 14 | | | | | | | 41791-1274 | |
| 15 | | | | | | | | |
| 16 | | | | | | | | |
| 17 | | | | | | | | |
| 18 | | | | | | | | |

| | | | | | |
|-------------------------|------|------------------------------|--------------------|--|------------------|
| Q6 | REV: | <u>ECR/ECN INFORMATION</u> | <u>TITLE:</u> | KK 156 HEADER ASSEMBLY FRICTION LOCK VERTICAL SOLID BODY W/O PEGS | <u>SHEET No.</u> |
| | | EC NO.: UCP2015-4098 | | | - 11 - |
| | | DATE: 5/22/2015 | | | |
| <u>DOCUMENT NUMBER:</u> | | <u>CREATED / REVISED BY:</u> | <u>CHECKED BY:</u> | <u>APPROVED BY:</u> | |
| SDA- 41791 | | MKIPPER | BANDERSON | FSMITH | |

| | | | | | | | | |
|---------|--------------|--------------|--------------|-------------------|--------------|--------------|--------------|--------------|
| OPTIONS | Group | A-41791-1285 | Group | A-41791-1307/1316 | Group | A-41791-1318 | Group | A-41791-1333 |
| | Header No: | 41790-0017 | Header No: | 41790-0009/0018 | Header No: | 41790-0005 | Header No: | 41790-0007 |
| | Pin No: | 43294-0214 | Pin No: | 43294-0214 | Pin No: | 43294-0214 | Pin No: | 43294-0214 |
| | Plating: | 197 – TIN | Plating: | 197 – TIN | Plating: | 197 – TIN | Plating: | 197 – TIN |
| | Pin Length L | 18.29 / .720 | Pin Length L | 18.29 / .720 | Pin Length L | 18.29 / .720 | Pin Length L | 18.29 / .720 |
| | Mating M | 11.43 / .450 | Mating M | 11.43 / .450 | Mating M | 11.43 / .450 | Mating M | 11.43 / .450 |
| | Gold Loc G | N/A | Gold Loc G | N/A | Gold Loc G | N/A | Gold Loc G | N/A |
| | PC Tail P | 3.56 / .140 | PC Tail P | 3.56 / .140 | PC Tail P | 3.56 / .140 | PC Tail P | 3.56 / .140 |
| | Tin Loc T | OVERALL | Tin Loc T | OVERALL | Tin Loc T | OVERALL | Tin Loc T | OVERALL |
| | Voided Ckts | 11 | Voided Ckts | 5,9 | Voided Ckts | 2,3,4 | Voided Ckts | 3,5,6 |
| | Pack Per | PK-41791-001 | Pack Per | PK-41791-001 | Pack Per | PK-41791-001 | Pack Per | PK-41791-001 |
| Ckts | Item Number | | Item Number | | Item Number | | Item Number | |
| 2 | | | | | | | | |
| 3 | | | | | | | | |
| 4 | | | | | | | | |
| 5 | | | | | 41791-1318 | | | |
| 6 | | | | | | | | |
| 7 | | | | | | | 41791-1333 | |
| 8 | | | | | | | | |
| 9 | | | | | | | | |
| 10 | | | | | | | | |
| 11 | | | | | | | | |
| 12 | | | | | | | | |
| 13 | | | | | | | | |
| 14 | | | 41791-1312 | | | | | |
| 15 | | | | | | | | |
| 16 | | | | | | | | |
| 17 | 41791-1285 | | | | | | | |
| 18 | | | | | | | | |

| | | | | | |
|-------------------------|------|------------------------------|--------------------|--|------------------|
| Q6 | REV: | <u>ECR/ECN INFORMATION</u> | <u>TITLE:</u> | KK 156 HEADER ASSEMBLY FRICTION LOCK VERTICAL SOLID BODY W/O PEGS | <u>SHEET No.</u> |
| | | EC NO.: UCP2015-4098 | | | - 12 - |
| | | DATE: 5/22/2015 | | | |
| <u>DOCUMENT NUMBER:</u> | | <u>CREATED / REVISED BY:</u> | <u>CHECKED BY:</u> | <u>APPROVED BY:</u> | |
| SDA- 41791 | | MKIPPER | BANDERSON | FSMITH | |



Компания «ЭлектроПласт» предлагает заключение долгосрочных отношений при поставках импортных электронных компонентов на взаимовыгодных условиях!

Наши преимущества:

- Оперативные поставки широкого спектра электронных компонентов отечественного и импортного производства напрямую от производителей и с крупнейших мировых складов;
- Поставка более 17-ти миллионов наименований электронных компонентов;
- Поставка сложных, дефицитных, либо снятых с производства позиций;
- Оперативные сроки поставки под заказ (от 5 рабочих дней);
- Экспресс доставка в любую точку России;
- Техническая поддержка проекта, помощь в подборе аналогов, поставка прототипов;
- Система менеджмента качества сертифицирована по Международному стандарту ISO 9001;
- Лицензия ФСБ на осуществление работ с использованием сведений, составляющих государственную тайну;
- Поставка специализированных компонентов (Xilinx, Altera, Analog Devices, Intersil, Interpoint, Microsemi, Aeroflex, Peregrine, Syfer, Eurofarad, Texas Instrument, Miteq, Cobham, E2V, MA-COM, Hittite, Mini-Circuits, General Dynamics и др.);

Помимо этого, одним из направлений компании «ЭлектроПласт» является направление «Источники питания». Мы предлагаем Вам помощь Конструкторского отдела:

- Подбор оптимального решения, техническое обоснование при выборе компонента;
- Подбор аналогов;
- Консультации по применению компонента;
- Поставка образцов и прототипов;
- Техническая поддержка проекта;
- Защита от снятия компонента с производства.



Как с нами связаться

Телефон: 8 (812) 309 58 32 (многоканальный)

Факс: 8 (812) 320-02-42

Электронная почта: org@eplast1.ru

Адрес: 198099, г. Санкт-Петербург, ул. Калинина, дом 2, корпус 4, литера А.