

## Compatible Flexible LED Strips

### NORMAL Bright

Product Code: **NB-WW-12M**

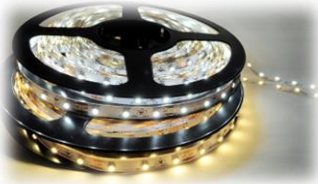


**30 White LEDs per Meter 12V** (9 LEDs per foot)  
LED Spacing: 1.31" Reel Length: 12M  
Cut Points: Every 4"  
Color Temperature: (Warm) ~3000K (Pure) ~4200K (Cool) ~6000K  
Lumen/Power Output: 100lm per Watt, **1W per foot**

Ideal for above cabinets, coves, and ceiling trays.  
 Recommended for use as accent light, not primary light source.

### SUPER Bright

Product Code: **SBWW-12M**



**60 White LEDs per Meter 12V** (18 LEDs per foot)  
LED Spacing: 0.66" Reel Length: 12M  
Cut Points: Every 1.97"  
Color Temperature: (Warm) ~3000K (Pure) ~4200K (Cool) ~6000K  
Lumen/Power Output: 100lm per Watt, **2W per foot**

**Best Value.** Great for accent lighting and low level task lighting.  
 Ideal for under cabinet, and display cabinets.

### ULTRA Bright

Product Code: **UBWW-12M**

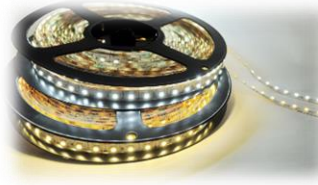


**99 White LEDs per Meter 12V** (30 LEDs per foot)  
LED Spacing: 0.39" Reel Length: 12M  
Cut Points: Every 1.18"  
Color Temperature: (Warm) ~3000K (Pure) ~4200K (Cool) ~6000K  
Lumen/Power Output: 100lm per Watt, **3.2W per foot**

Perfect for task lighting applications. Most commonly used for under cabinets, garages, safes and jewelry cases. Excellent for restaurant and retail.

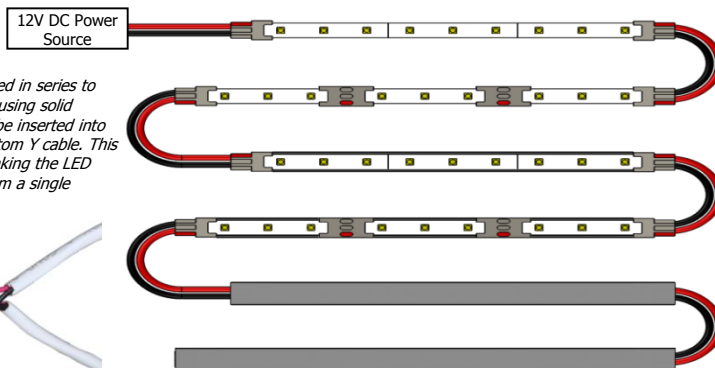
### MEGA Bright

Product Code: **MBWW- 12M**



**120 White LEDs per Meter 12V or 24V** (36 LEDs per foot)  
LED Spacing: 0.33" Reel Length: 12M  
Cut Points: Every 1.97"  
Color Temperature: (Warm) ~3000K (Pure) ~4200K (Cool) ~6000K  
Lumen/Power Output: 100lm per Watt, **4W per foot**

Use when too much light is just right.



**NOTE:** Products can be used in series to create an LED system. When using solid 22AWG wire, two cables can be inserted into the connector to create a custom Y cable. This is extremely useful when breaking the LED system into two directions from a single connector.

## Solderless Wire Lock Connector:



**Size:** 0.42" x 0.63" x 0.19"  
**Screw Terminal Size:** Fits 18-24AWG  
**Quantity:** Sold in sets of 25, includes 5 LED Strip extenders  
 Product Code: **3563**

Ideal for making custom length flex strips in the field.  
 Perfect for contractors and electricians. Input terminals work with **18-22AWG solid strand cable.**

- Termination for Inspired LED Flex Strips only
- 5 IDEA Series Connectors and 1 Flexible LED Strip Extenders included in each flexible LED Strip reel.
- To be used for in indoor applications
- Allows for assembly and testing before installation
- Does not require the use of a soldering iron

**STEP 1:** Open connector locking cap.



**STEP 2:** Peel adhesive liner from flexible LED strip.



**STEP 3:** Insert flexible LED strip into LED input channel of connector.



**STEP 4:** Close locking cap until the snap of the connector is heard. The snapping sound indicates the locking cap has been properly terminated.



**STEP 5:** Identify polarity on LED strip. Polarity is marked throughout the length of the flexible LED strip. Use a red sharpie to mark polarity on connector.



**STEP 6:** Strip 18-22AWG cable and match polarity between LED connector and cable.



**STEP 7:** Poke cable leads into wire holes of connector making sure the positive polarity matches the positive input hole of connector.



**NOTE:** Connectors are not assigned polarity. Polarity must be defined by user. Look throughout the length of the strip to identify polarity, it may not be indicated exactly at each cut point. Check termination by tugging on the cable leads and LED flex to insure tight connections. Cable should be difficult to remove when properly terminated.

# iDea Series LED Extrusion w/ Lens – LED Panels

## Extrusion w/ Lens

Aluminum Channel (6'): **3565**  
 Polycarbonate Covers (6'): **3566**  
 Mounting Clips/Screws (10/bag): **3567**  
 Black Clips/Screws (10/bag): **4774**



## LED Panels on Demand

Flexible LED Strip: Fits *Normal, Super, Ultra* and *Mega Bright* Flex Strips

Aluminum Extrusion Channel: 0.14" x 0.41" x 72"

Polycarbonate Covers/Lens: 0.22" x 0.5" x 72"

Lens Colors: White (Frosted) or Clear

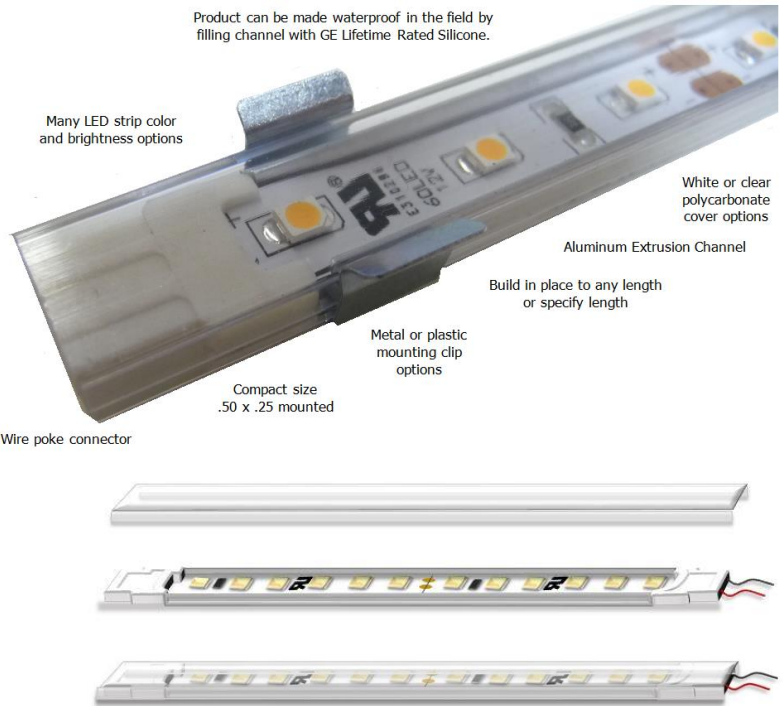
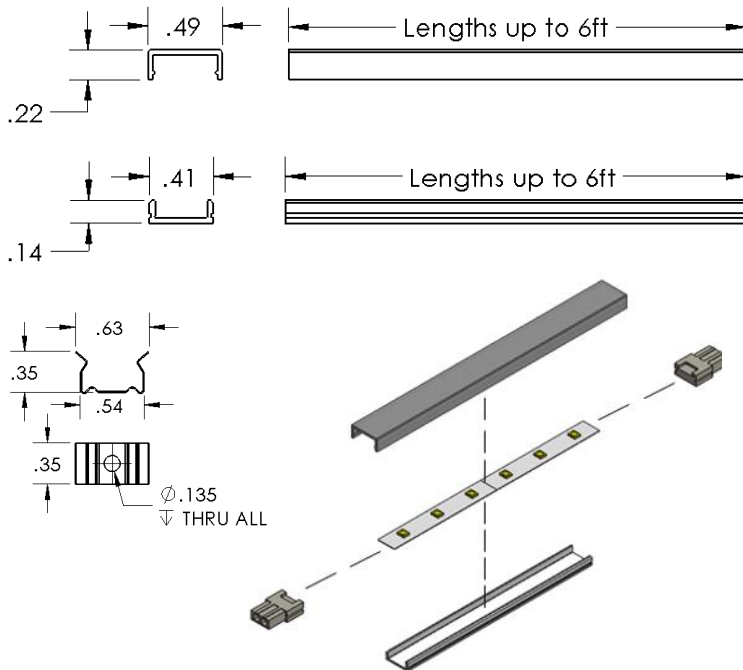
Color Temperature: (Warm) ~3000K (Pure) 4200K (Cool) 6000K

Mounting: Metal or Plastic Mounting Clips

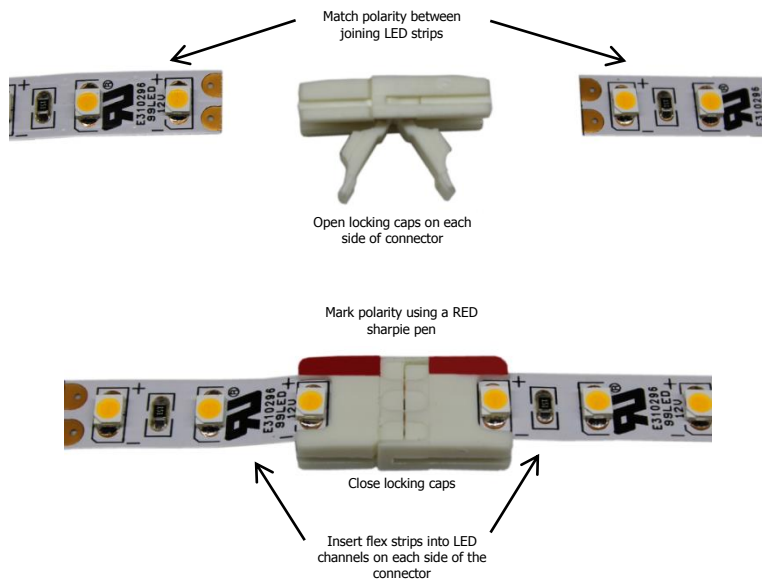
Create custom low profile panels within minutes.

- All panel materials are optional and sold separately
- Tiny, light weight construction
- Provides a beautiful finished look
- Allows for in-field assembly and testing before installation
- Does not require the use of a soldering iron or heavy machinery

## iDea Series LED Extrusion w/ Lens Assembly



## Solderless Flexible LED Strip Extender

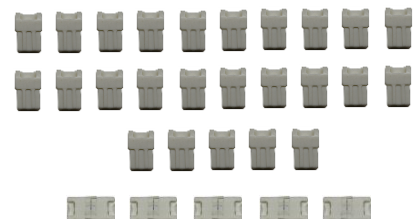


## iDea Series Connector Sets

Each **Inspired LED 12M LED Flexible Strip Reel** includes 5 IDEA Series Connectors and 1 Flexible Strip Extender.



IDEA Series Connectors are sold in 30 piece sets. **25 Wire Lock Connectors + 5 Flex Extenders**





Компания «ЭлектроПласт» предлагает заключение долгосрочных отношений при поставках импортных электронных компонентов на взаимовыгодных условиях!

Наши преимущества:

- Оперативные поставки широкого спектра электронных компонентов отечественного и импортного производства напрямую от производителей и с крупнейших мировых складов;
- Поставка более 17-ти миллионов наименований электронных компонентов;
- Поставка сложных, дефицитных, либо снятых с производства позиций;
- Оперативные сроки поставки под заказ (от 5 рабочих дней);
- Экспресс доставка в любую точку России;
- Техническая поддержка проекта, помощь в подборе аналогов, поставка прототипов;
- Система менеджмента качества сертифицирована по Международному стандарту ISO 9001;
- Лицензия ФСБ на осуществление работ с использованием сведений, составляющих государственную тайну;
- Поставка специализированных компонентов (Xilinx, Altera, Analog Devices, Intersil, Interpoint, Microsemi, Aeroflex, Peregrine, Syfer, Eurofarad, Texas Instrument, Miteq, Cobham, E2V, MA-COM, Hittite, Mini-Circuits, General Dynamics и др.);

Помимо этого, одним из направлений компании «ЭлектроПласт» является направление «Источники питания». Мы предлагаем Вам помощь Конструкторского отдела:

- Подбор оптимального решения, техническое обоснование при выборе компонента;
- Подбор аналогов;
- Консультации по применению компонента;
- Поставка образцов и прототипов;
- Техническая поддержка проекта;
- Защита от снятия компонента с производства.



#### Как с нами связаться

**Телефон:** 8 (812) 309 58 32 (многоканальный)

**Факс:** 8 (812) 320-02-42

**Электронная почта:** [org@eplast1.ru](mailto:org@eplast1.ru)

**Адрес:** 198099, г. Санкт-Петербург, ул. Калинина, дом 2, корпус 4, литера А.