

# Panasonic NFC-TAG Development kit Installation Manual

Ver2.42

Panasonic Semiconductor Solutions Co., Ltd.

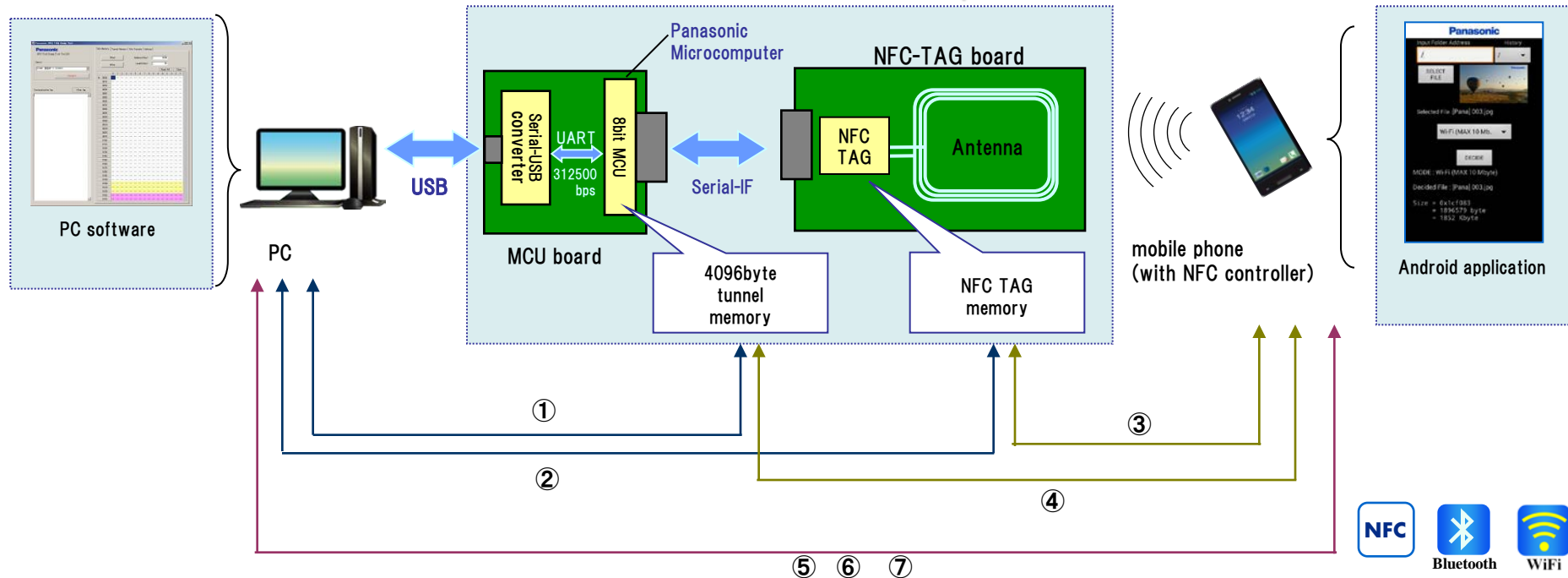
2015/01/08

# Contents

■ Summary	.....	3
■ Setup procedure	.....	5
■ Usage	.....	15

# Summary of Development kit (1)

## 1. Structure



※ NFC TAG memory = 512 byte : MN63Y1208 / MN63Y1210A/MN63Y1213  
 1024 byte : MN63Y1214 / MN63Y1217  
 ※ tunnel memory = microcomputer memory  
 ※ Serial-I/F MN63Y1208 / MN63Y1213 / MN63Y1214 / MN63Y1217 : I2C 100Kbps  
 MN63Y1210A : UART 9600bps, 38400bps, Clock Synchronous Serial 1Mbps

## 2. Function

- ① Read/Write NFC-TAG memory from mobile phone with NFC function
- ② Read/Write Tunnel memory from mobile phone with NFC function
- ③ Read/Write NFC-TAG memory from PC(microcomputer)
- ④ Read/Write Tunnel memory from PC
- ⑤ Write Files from mobile Phone to PC by NFC
- ⑥ Write Files from mobile Phone to PC by Bluetooth (Send Pairing information by NFC)
- ⑦ Write Files from mobile Phone to PC by WiFi (Send Pairing information by NFC)

# Summary of Development kit (2)

## 3. Software Version

In this document, we have assumed the use of the following software.

Software		Version	File Name	outline
Microcomputer Software		2.42	※It is written in the MCU board	Microcomputer board control software
PC Software (control MCU board)		2.42	NFCTAG_DumpTool_v242.exe	Read/Write the NFC-TAG/MCU memory from PC
		3.5.605	InTheHand.Net.Personal.dll	control the Bluetooth adapter when performing the file transfer by Bluetooth ※About how to obtain, please refer to [setup procedure (3)]
		1.0.1	NfcWifiCtrl.dll	control the WiFi adapter when performing the file transfer by WiFi
PC Software (control PC-R/W)		1.42	NFCTAG_DumpTool_PCSC_V142.exe	Read/Write the NFC-TAG/MCU memory from PC-R/W (Sony PaSoRi) that is connect to the PC
		2.2.2	NfcRW.dll	control the Sony PaSoRi
Android Application	Read/Write	1.51	Panasonic_TagRW_v151.apk	Read/Write the NFC-TAG/MCU memory from mobile phone
	File transfer	1.55	Panasonic_TagFileTx_v155.apk	transfer the files such as photos to the PC from the mobile phone
	NFC TAG setting	1.50	Panasonic_TagSetting1208_v150.apk	MN63Y1208 TAG setting
		1.50	Panasonic_TagSetting1210_v150.apk	MN63Y1210A TAG setting
		1.50	Panasonic_TagSetting1213_v150.apk	MN63Y1213 TAG setting
		1.54	Panasonic_TagSetting1214_v154.apk	MN63Y1214 TAG setting
		1.53	Panasonic_TagSetting1217_v153.apk	MN63Y1217 TAG setting

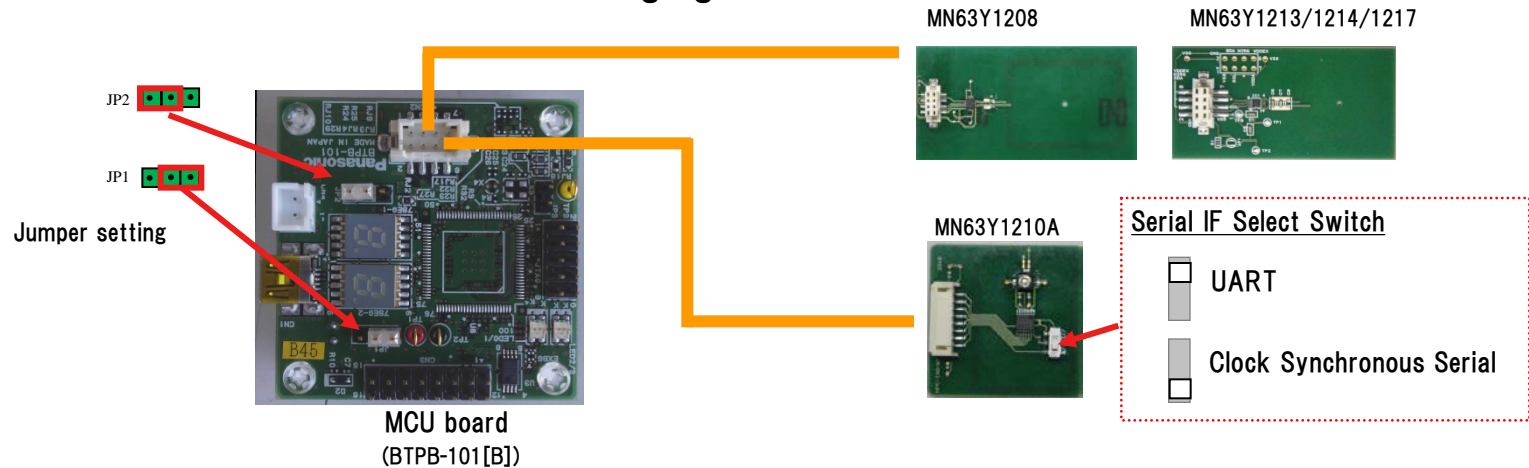
Usage of PC Software(control PC-R/W) , Please refer to the Software Manual for NFC-R/W (NFC-RW Application Manual(E)\_v142A.pdf)

# Development kit setup procedure

# Setup procedure (1)

## Step1. board Setting

Please refer board connection of the following figure.



## Step2. install driver and Application (for PC)

(1) Please copy an application file to a personal computer

Sample Application : NFCTAG\_DumpTool\_vXXX.exe

※対応OS:Microsoft Windows 7 SP1

(2) Please download and install [.NET Framework] from the following site.

•Microsoft .NET Framework 4 Client Profile

download site <http://www.microsoft.com/en-us/download/details.aspx?id=24872>

# Setup procedure (2)

(3) Please download and install [driver of the MCU board] from the following site.

• Virtual COM Port Driver (FTDI)

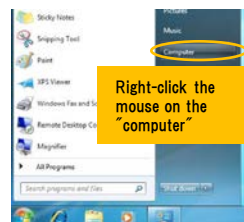
download site <http://www.ftdichip.com/Drivers/VCP.htm>

→ Please choose an appropriate driver from the item of VCP Drivers.

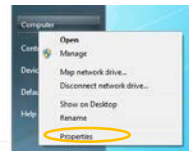
① connect MCU Board to PC by USB



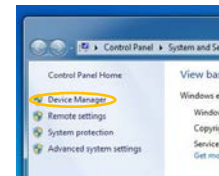
② open the Device Manager



Right-click the mouse on the "computer"

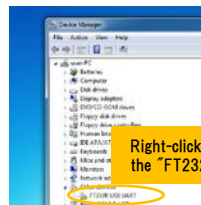


Select "Properties"

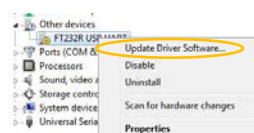


Select "Device Manager"

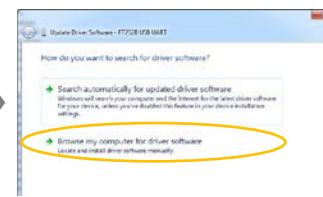
③ install driver for FT232



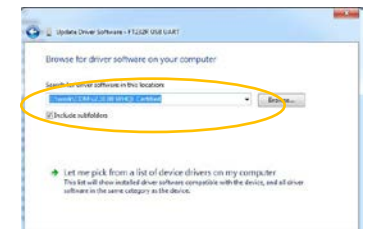
Right-click the mouse on the "FT232R USB UART"



Select "Update Driver Software"

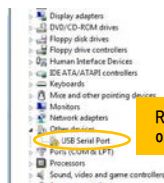


select "Browse my computer for driver software"

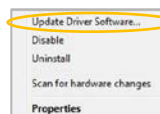


set the downloaded driver in the input box of [Search for driver software in this location], and install the driver

④ install driver for USB Serial Port



Right-click the mouse on the "USB Serial Port"



Select "Update Driver Software"

# Setup procedure (3)

(4) Please download and install [library] from the following site.

This procedure is necessary for performing a file transfer by Bluetooth

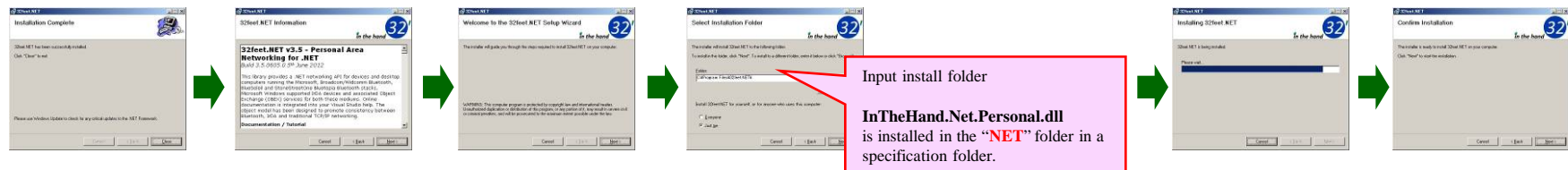
• **32feet.NET** (<http://32feet.codeplex.com/>)

download site <http://32feet.codeplex.com/downloads/get/386489>

※ file name : 32feet.NET 3.5.zip

- PC Application needs the library file that is included in “32feet.NET 3.5.zip”. (InTheHand.Net.Personal.dll)
- Please install the library file (InTheHand.Net.Personal.dll) in the same directory as the PC Application.

Install Step (run Setup.exe)



※When using Bluetooth, Bluetooth function is required for the personal computer.

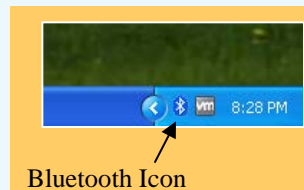
We use following USB-Bluetooth Adapter

BT-MicroEDR2X, BT-Micro4 (PLANEX COMMUNICATIONS INC.)

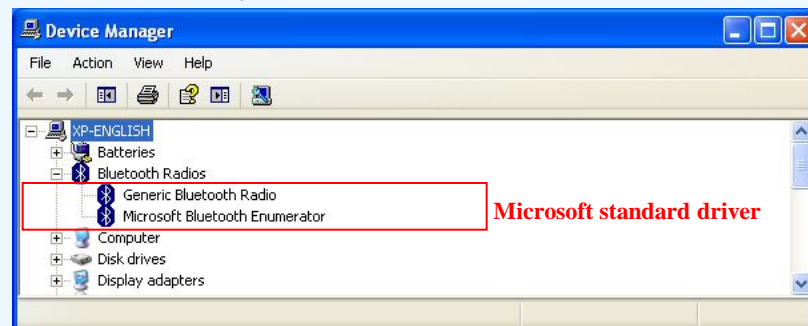
<http://www.planex.co.jp/product/bluetooth/bt-microedr2x/>

## About Bluetooth driver

OS standard driver of Microsoft should be used for the Bluetooth driver.



confirm in device manager





# Setup procedure (4)

(5) Please copy WiFi control library(DLL) to a personal computer.

This procedure is necessary for performing a file transfer by WiFi

Please put the following library file in the same directory as the PC Application.

- Library : NfcWifiCtrl.dll

※Support OS : Microsoft Windows 7 SP1

※ When using WiFi, WiFi function is required for the personal computer.

We use following USB-WiFi Adapter

WLI-UC-GNM2 (BUFFALO INC.)

<http://buffalo.jp/product/wireless-lan/client/wli-uc-gnm2/>

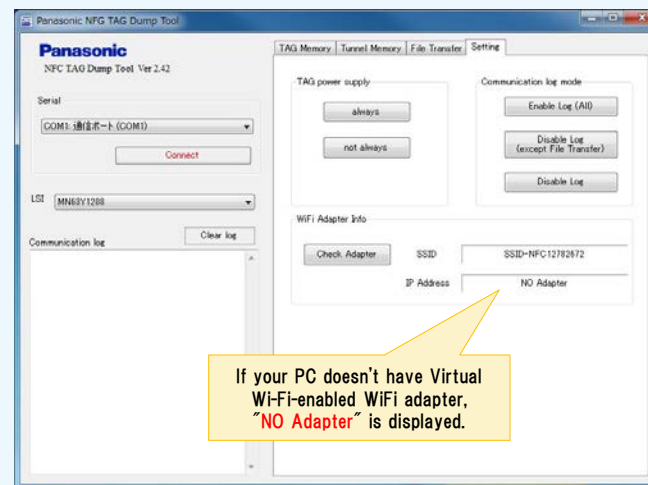
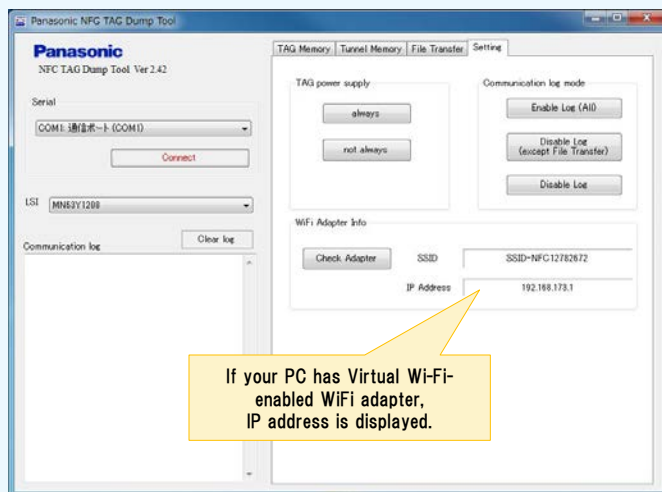
## About WiFi function

Our development kit uses "Virtual Wi-Fi (wireless hosted network)" that is Microsoft Windows7 standard function.

So Virtual Wi-Fi-enabled WiFi adapter is required.

(Our development kit supports one Virtual Wi-Fi-enabled WiFi adapter)

※After the PC software startup (**startup as administrator**),  
you can see whether your PC has Virtual Wi-Fi-enabled WiFi adapter.



# Setup procedure (5)

## Step3. install Android Application

Please install Android Application to the mobile Phone

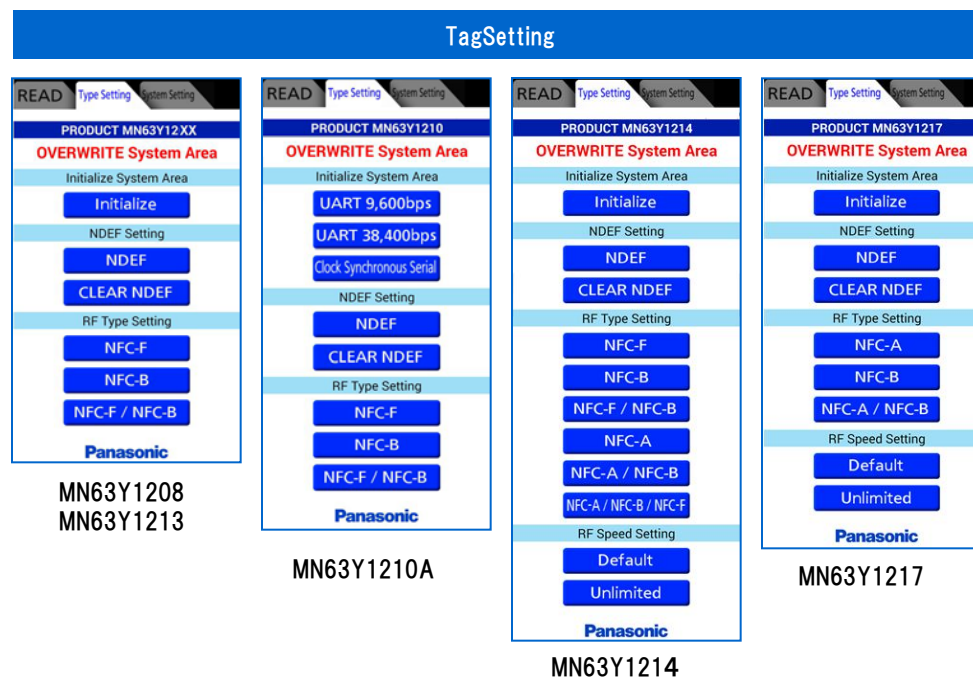
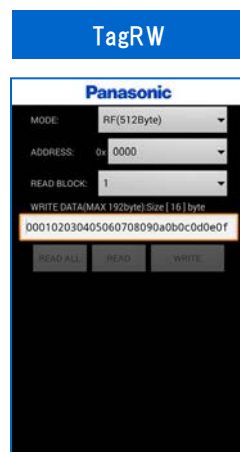
Android Sample Application

- Panasonic\_TagRW\_vXXX.apk
- Panasonic\_TagFileTx\_vXXX.apk
- Panasonic\_TagSettingXXXX\_vXXX.apk

(data transfer application)

(file transfer application)

(MN63Y1208/1210A/1213/1214/1217 TAG setting application)



usage of the applications, Please refer to each manuals.

# Setup procedure (6)

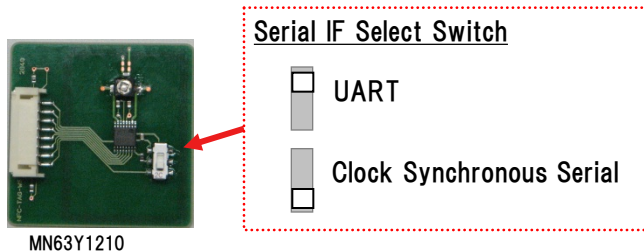
## Step4. NFC TAG initial setting

The initial configuration of the NFC TAG board (antenna board)

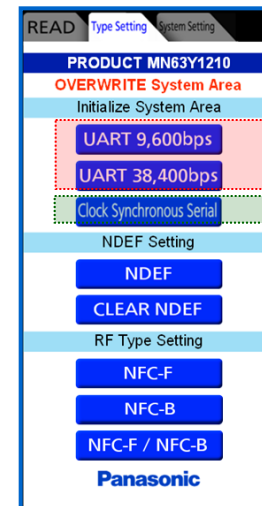
### ■ MN63Y1210A

Serial Type : UART / Clock Synchronous Serial

#### (1) Board Setting



#### (2) writing initialization data (Serial Type setting)



UART

Clock Synchronous Serial

initialize the TAG by using the application of TAG setting.  
(Panasonic\_TagSetting1210)

- (1) Start Android Application
- (2) Push the button of hope
- (3) Bring the mobile phone close to the TAG to write initial data

# Setup procedure (7)

## ■ MN63Y1208/1213/1214/1217

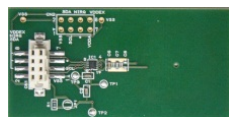
### (1) writing initialization data

initialize the TAG by using the application of TAG setting.  
(Panasonic\_TagSetting1208 / 1213 / 1214 / 1217)

- (1) Start Android Application
- (2) Push "initialize" button
- (3) Bring the mobile phone close to the TAG to write initial data



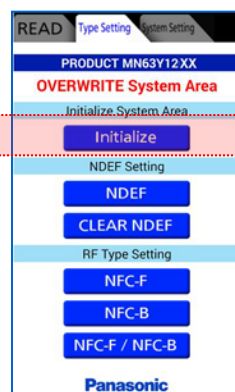
MN63Y1208



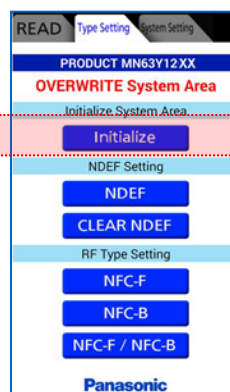
MN63Y1213/1214/1217



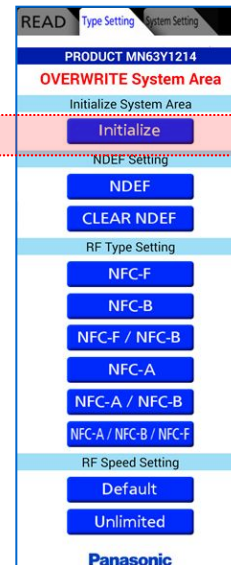
### TAG setting Application (Android)



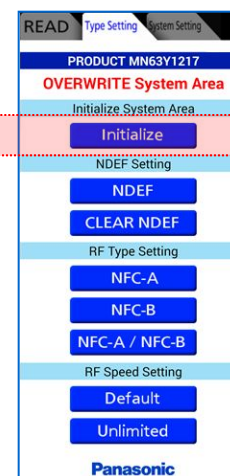
MN63Y1208



MN63Y1213



MN63Y1214



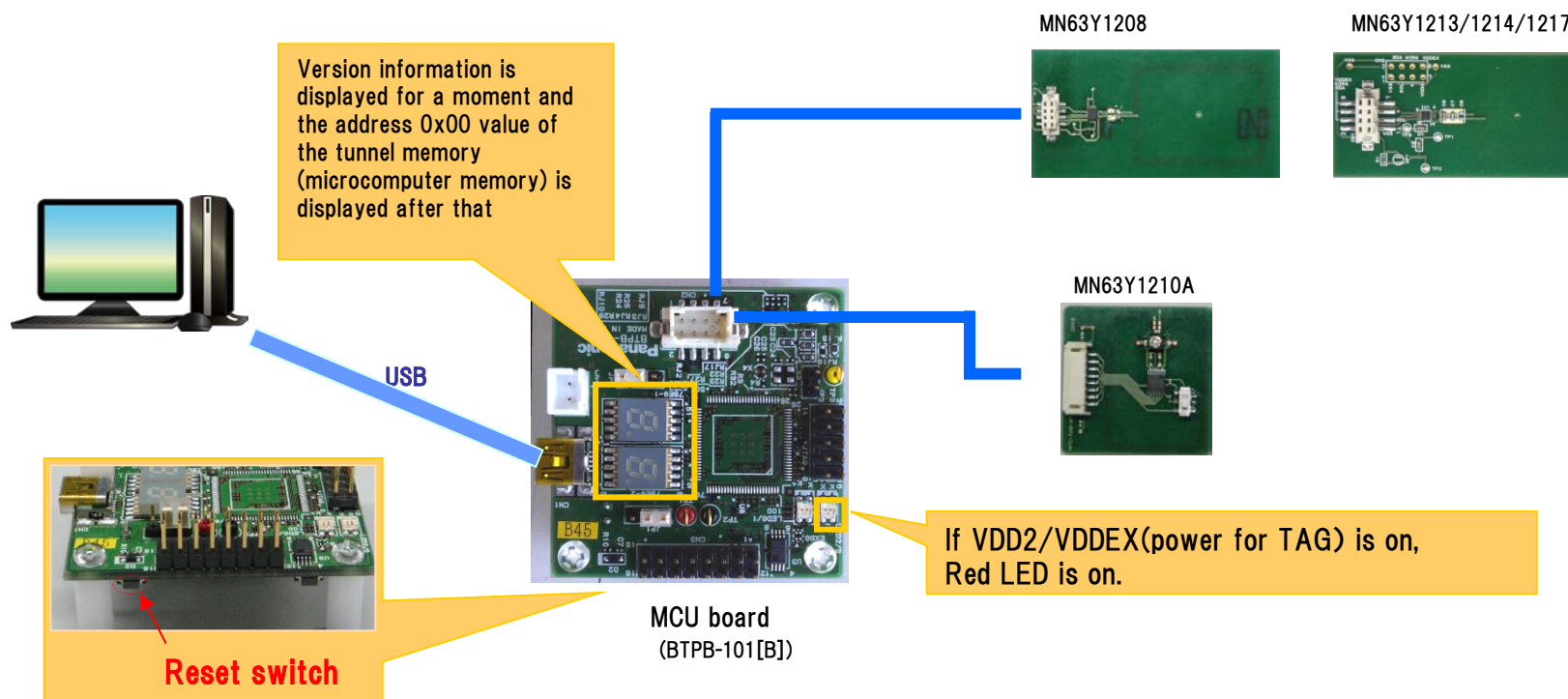
MN63Y1217

Initialize button

# Setup procedure (8)

## Step5. Reset MCU Board

After connecting the personal computer and MCU board by USB,  
Please push the reset switch of the MCU board.



# Setup procedure (9)

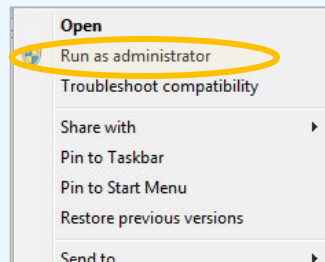
## Step6. Start PC software

### In case of performing the file transfer by WiFi

This procedure is necessary for performing a file transfer by WiFi

If you do the file transfer by WiFi, please start the PC software **as administrator**.

※In order to use Microsoft Windows7 standard function "Virtual Wi-Fi (wireless hosted network)", you must start the application as administrator.

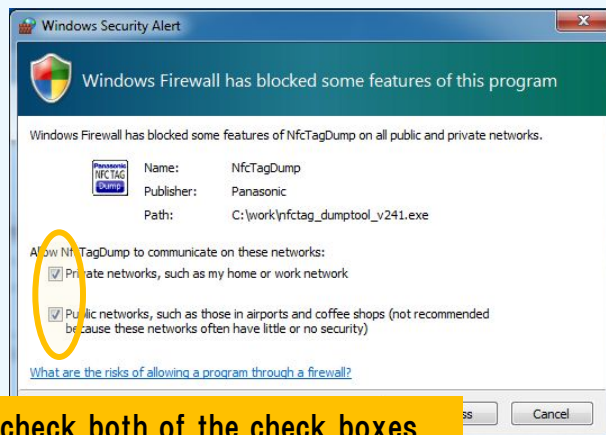


On the PC software,  
In the menu that appears when you right-click the mouse  
Please select [Run as administrator]

When you start the PC software as administrator, the Security Alert screen will appear.

If you perform the file transfer by WiFi, please check both of the check boxes.

※This is necessary to perform the data communication with mobile phones.



please check both of the check boxes

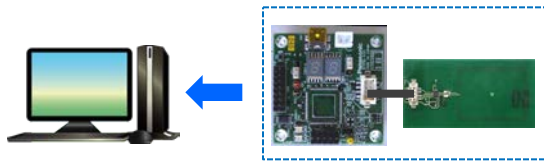
## Development kit usage





## Usage 2 (file transfer1)

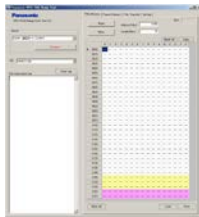
### STEP 1



connect MCU board to PC by USB



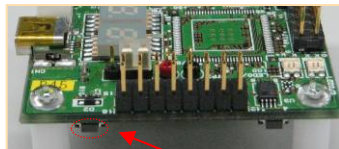
### STEP 2



Start the PC software, and connect to the MCU board



### STEP 3

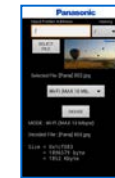


**Reset switch**

Push the reset switch of the MCU board (reset the board)



### STEP 4

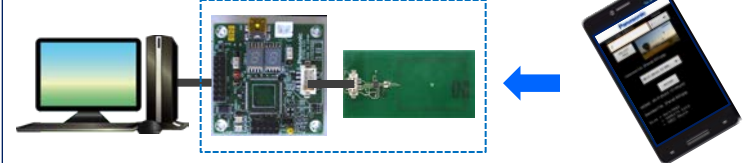


Android  
file transfer Application  
(TagFileTx)

Start the file transfer application on mobile phone  
and select the file that you want to transfer to the PC



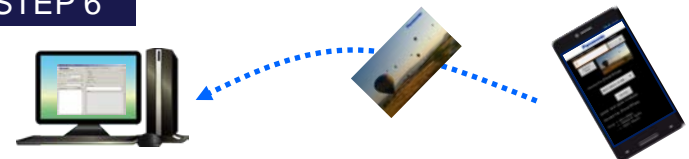
### STEP 5



touch the tag by the mobile phone



### STEP 6



Screen of the PC software switches automatically,  
And file transfer is started (see next page)

## file transfer screen

If the mobile phone that is performing android application (Panasonic\_TagFileTx) is brought close to NFC-TAG, a file transfer will be started automatically and information will be displayed on the “file Transfer” tab.

The following icons are displayed during a file transfer by Bluetooth/WiFi.



Waiting for Bluetooth connection



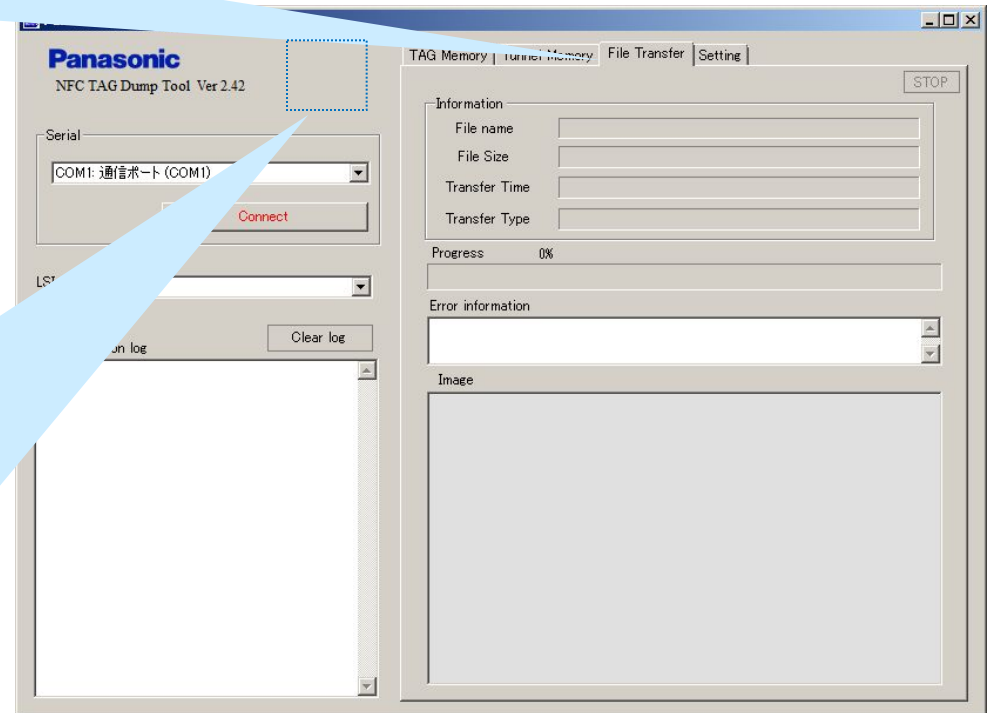
file transfer by Bluetooth



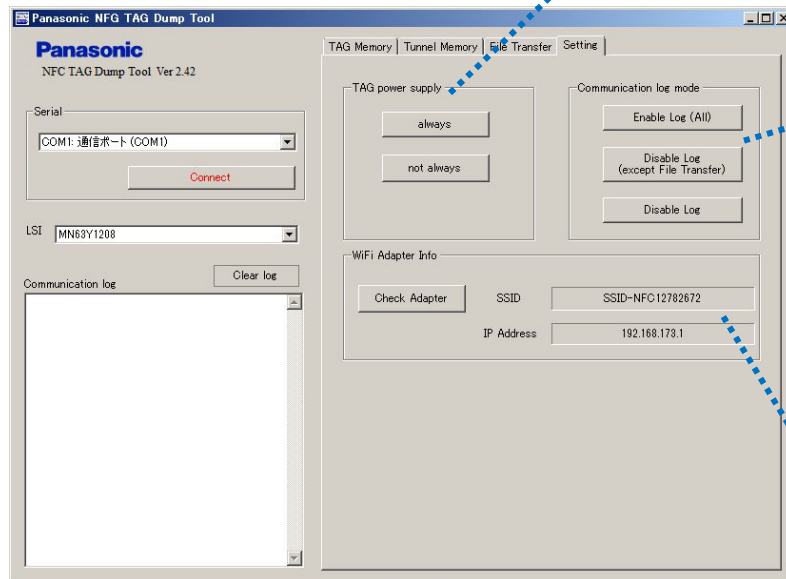
Waiting for WiFi connection



file transfer by WiFi



## Usage 4 (setting)



### ■ Tag power supply

control the power supply to the tag from the microcomputer  
always : power supply to the tag always  
not always : power supply to the tag when necessary

### ■ Communication log mode

set of log display

Enable Log (All)	: enable all log
Disable Log (except File Transfer)	: enable only necessary logs for file transfer
Disable Log	: disable all log

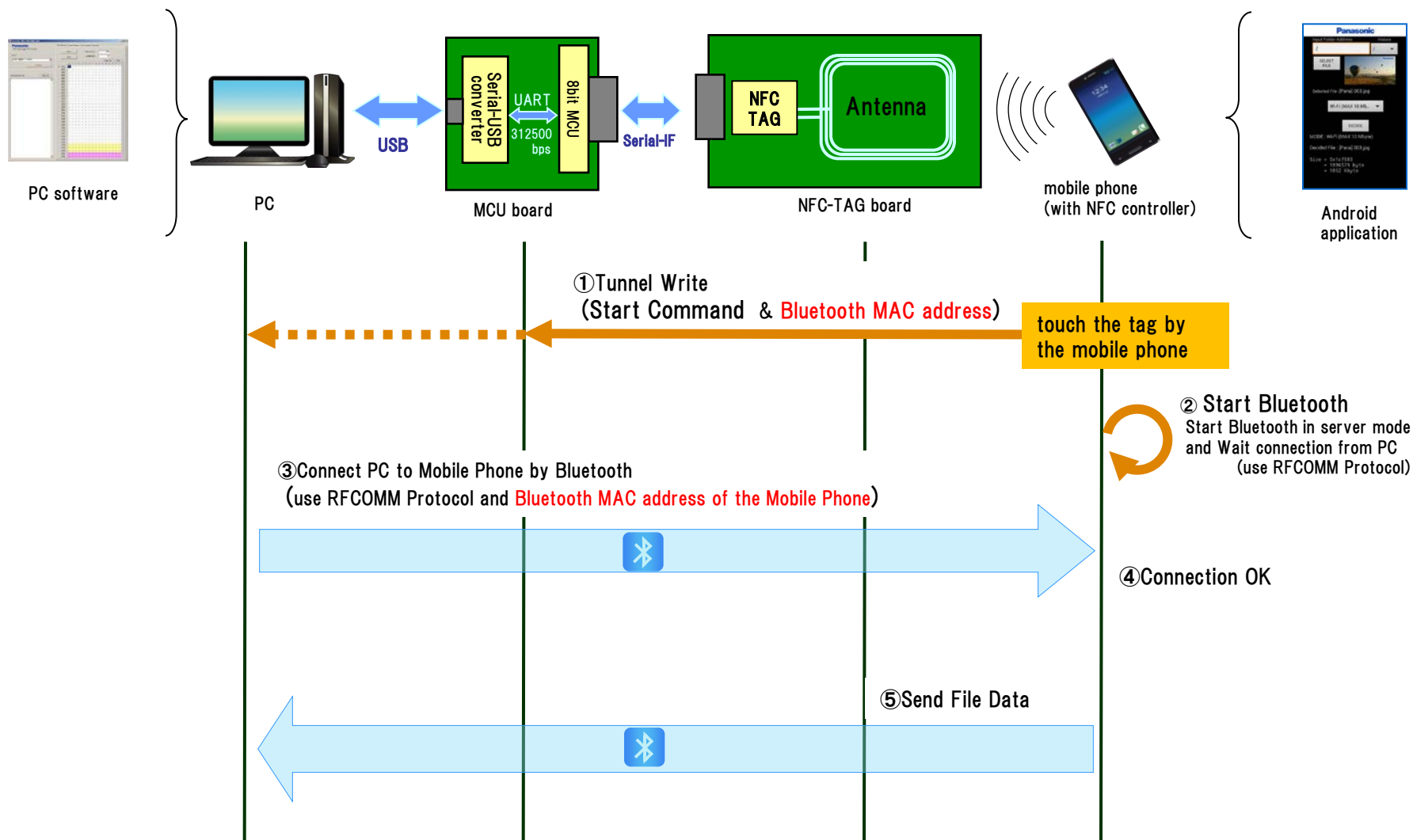
### ■ WiFi Adapter Info

Display the information of WiFi adapter (PC will be the access point)

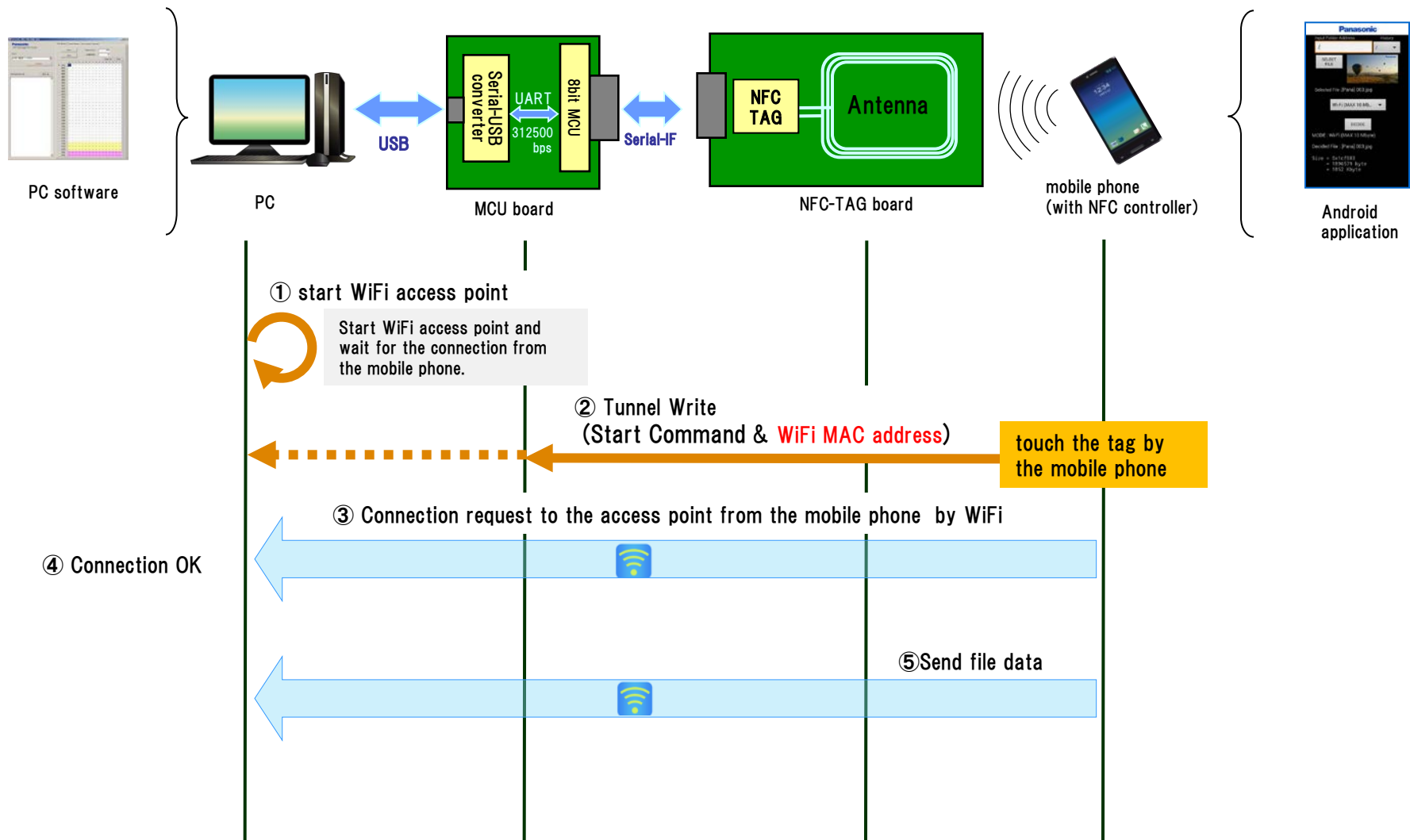
SSID	: SSID of the access point
IP Address	: IP address of the access point

Check Adapter : update the information of WiFi adapter

## (supplement) Bluetooth file transfer sequence



# (supplement) WiFi file transfer sequence



# Revision History

Version	Date	Comments
2.00	2012/11/22	Initial edition
2.20	2013/09/05	Version up of PC software/Android application
2.21	2013/10/03	add MN63Y1213
2.30	2013/10/25	Version up of PC software
2.41	2014/10/31	add MN63Y1214/1217, support WiFi file transfer
2.42	2015/01/08	Version up of Microcomputer software / PC software / Android software

## Request for your special attention and precautions in using the technical information and semiconductors described in this book

- (1) If any of the products or technical information described in this book is to be exported or provided to non-residents, the laws and regulations of the exporting country, especially, those with regard to security export control, must be observed.
- (2) The technical information described in this book is intended only to show the main characteristics and application circuit examples of the products. No license is granted in and to any intellectual property right or other right owned by Panasonic Corporation or any other company. Therefore, no responsibility is assumed by our company as to the infringement upon any such right owned by any other company which may arise as a result of the use of technical information described in this book.
- (3) The products described in this book are intended to be used for general applications (such as office equipment, communications equipment, measuring instruments and household appliances), or for specific applications as expressly stated in this book. Consult our sales staff in advance for information on the following applications:
  - Special applications (such as for airplanes, aerospace, automotive equipment, traffic signaling equipment, combustion equipment, life support systems and safety devices) in which exceptional quality and reliability are required, or if the failure or malfunction of the products may directly jeopardize life or harm the human body.It is to be understood that our company shall not be held responsible for any damage incurred as a result of or in connection with your using the products described in this book for any special application, unless our company agrees to your using the products in this book for any special application.
- (4) The products and product specifications described in this book are subject to change without notice for modification and/or improvement. At the final stage of your design, purchasing, or use of the products, therefore, ask for the most up-to-date Product Standards in advance to make sure that the latest specifications satisfy your requirements.
- (5) When designing your equipment, comply with the range of absolute maximum rating and the guaranteed operating conditions (operating power supply voltage and operating environment etc.). Especially, please be careful not to exceed the range of absolute maximum rating on the transient state, such as power-on, power-off and mode-switching. Otherwise, we will not be liable for any defect which may arise later in your equipment.

Even when the products are used within the guaranteed values, take into the consideration of incidence of break down and failure mode, possible to occur to semiconductor products. Measures on the systems such as redundant design, arresting the spread of fire or preventing glitch are recommended in order to prevent physical injury, fire, social damages, for example, by using the products.
- (6) Comply with the instructions for use in order to prevent breakdown and characteristics change due to external factors (ESD, EOS, thermal stress and mechanical stress) at the time of handling, mounting or at customer's process. When using products for which damp-proof packing is required, satisfy the conditions, such as shelf life and the elapsed time since first opening the packages.
- (7) This book may be not reprinted or reproduced whether wholly or partially, without the prior written permission of our company.

20100202

If you have any inquiries or questions about this book or our semiconductor products, please contact our sales division.

# Mouser Electronics

Authorized Distributor

Click to View Pricing, Inventory, Delivery & Lifecycle Information:

Panasonic:

[BTPB-101B\\_MN101EF63G](#)





Компания «ЭлектроПласт» предлагает заключение долгосрочных отношений при поставках импортных электронных компонентов на взаимовыгодных условиях!

Наши преимущества:

- Оперативные поставки широкого спектра электронных компонентов отечественного и импортного производства напрямую от производителей и с крупнейших мировых складов;
- Поставка более 17-ти миллионов наименований электронных компонентов;
- Поставка сложных, дефицитных, либо снятых с производства позиций;
- Оперативные сроки поставки под заказ (от 5 рабочих дней);
- Экспресс доставка в любую точку России;
- Техническая поддержка проекта, помощь в подборе аналогов, поставка прототипов;
- Система менеджмента качества сертифицирована по Международному стандарту ISO 9001;
- Лицензия ФСБ на осуществление работ с использованием сведений, составляющих государственную тайну;
- Поставка специализированных компонентов (Xilinx, Altera, Analog Devices, Intersil, Interpoint, Microsemi, Aeroflex, Peregrine, Syfer, Eurofarad, Texas Instrument, Miteq, Cobham, E2V, MA-COM, Hittite, Mini-Circuits, General Dynamics и др.);

Помимо этого, одним из направлений компании «ЭлектроПласт» является направление «Источники питания». Мы предлагаем Вам помощь Конструкторского отдела:

- Подбор оптимального решения, техническое обоснование при выборе компонента;
- Подбор аналогов;
- Консультации по применению компонента;
- Поставка образцов и прототипов;
- Техническая поддержка проекта;
- Защита от снятия компонента с производства.



#### Как с нами связаться

**Телефон:** 8 (812) 309 58 32 (многоканальный)

**Факс:** 8 (812) 320-02-42

**Электронная почта:** [org@eplast1.ru](mailto:org@eplast1.ru)

**Адрес:** 198099, г. Санкт-Петербург, ул. Калинина, дом 2, корпус 4, литера А.