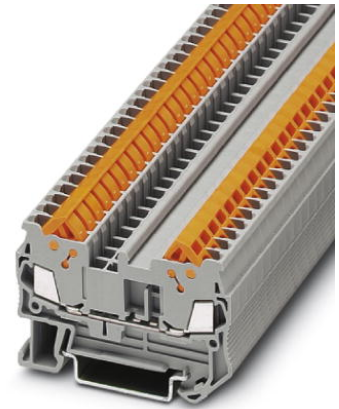


## QTC 1,5

Order No.: 3205019



<http://eshop.phoenixcontact.de/phoenix/treeViewClick.do?UID=3205019>

Quick connection feed-through terminal block, Type of connection: Quick connection, Quick connection, Cross section: 0.25 mm<sup>2</sup> - 1.5 mm<sup>2</sup>, AWG 24 - 16, Width: 5.2 mm, Color: gray, Mounting type: NS 35/7,5, NS 35/15



| Commercial data          |                    |
|--------------------------|--------------------|
| EAN                      | 4017918932411      |
| Pack                     | 50 pcs.            |
| Customs tariff           | 85369010           |
| Weight/Piece             | 0.009163 KG        |
| Catalog page information | Page 218 (CL-2009) |

#### Product notes

WEEE/RoHS-compliant since:  
01/01/2003



<http://www.download.phoenixcontact.com>  
Please note that the data given here has been taken from the online catalog. For comprehensive information and data, please refer to the user documentation. The General Terms and Conditions of Use apply to Internet downloads.

#### Technical data

##### General

|                       |      |
|-----------------------|------|
| Number of levels      | 1    |
| Number of connections | 2    |
| Color                 | gray |

|                                    |    |
|------------------------------------|----|
| Insulating material                | PA |
| Inflammability class acc. to UL 94 | V0 |

**Dimensions**

|                  |         |
|------------------|---------|
| Width            | 5.2 mm  |
| Length           | 58.8 mm |
| Height NS 35/7,5 | 39.3 mm |
| Height NS 35/15  | 46.8 mm |

**Technical data**

|                                  |   |
|----------------------------------|---|
| Maximum load current             | 17.5 A (with 1.5 mm <sup>2</sup> conductor cross section) |
| Rated surge voltage              | 8 kV  |
| Pollution degree                 | 3   |
| Surge voltage category           | III   |
| Insulating material group        | I   |
| Connection in acc. with standard | IEC 60947-7-1   |
| Nominal current I <sub>N</sub>   | 17.5 A  |
| Nominal voltage U <sub>N</sub>   | 800 V   |
| Open side panel                  | ja  |

**Connection data**

|   |                      |
|---|----------------------|
| Conductor cross section solid min.  | 0.25 mm <sup>2</sup> |
| Conductor cross section solid max.  | 1.5 mm <sup>2</sup>  |
| Conductor cross section stranded min.                                       | 0.25 mm <sup>2</sup> |
| Conductor cross section stranded max.                                       | 1.5 mm <sup>2</sup>  |
| Conductor cross section AWG/kcmil min.                                      | 24                   |
| Conductor cross section AWG/kcmil max                                       | 16                   |
| Type of connection  | Quick connection     |
| Material wire insulation  | PVC / PE             |
| Structure of individual litz in acc. with VDE 0295 / smallest wire diameter | VDE 0295 Cl.1-5      |

**Certificates / Approvals**

Certification

ABS, BV, CSA, CUL, DNV, GL, KR, LR, NK, UL

Certification Ex: IECEX, KEMA-EX

**CSA**

|                       |       |
|-----------------------|-------|
| Nominal voltage $U_N$ | 600 V |
| Nominal current $I_N$ | 10 A  |
| AWG/kcmil             | 24-16 |

**CUL**

|                       |       |
|-----------------------|-------|
| Nominal voltage $U_N$ | 600 V |
| Nominal current $I_N$ | 10 A  |
| AWG/kcmil             | 24-16 |

**UL**

|                       |       |
|-----------------------|-------|
| Nominal voltage $U_N$ | 600 V |
| Nominal current $I_N$ | 10 A  |
| AWG/kcmil             | 24-16 |

**Accessories**

| Item            | Designation                 | Description  |
|-----------------|-----------------------------|--|
| <b>Assembly</b> |                             |  |
| 3206209         | ATP-QTC                     | Partition plate, Length: 64.4 mm, Width: 2 mm, Height: 46 mm, Color: gray  |
| 3022218         | CLIPFIX 35                  | Snap-on end bracket, for 35 mm NS 35/7.5 or NS 35/15 DIN rail, can be fitted with Zack strip ZB 8 and ZB 8/27, terminal strip marker KLM 2 and KLM, width: 9.5 mm, color: gray   |
| 3022276         | CLIPFIX 35-5                | Snap-on end bracket, for NS 35/7.5 or NS 35/15 DIN rail, can be fitted with Zack strip ZB 5 and ZBF 5, terminal strip marker KLM 2 and KLM, parking facility for FBS...5, FBS...6, KSS 5, KSS 6, width: 5,15 mm, color: gray |
| 3205161         | D-QTC 1,5                   | End cover, Length: 58.8 mm, Width: 2.2 mm, Height: 39.3 mm, Color: gray  |
| 1201442         | E/UK                        | End clamp, for assembly on NS 32 or NS 35/7,5 DIN rail   |
| 0801762         | NS 35/ 7,5 CU UNPERF 2000MM | DIN rail, material: Copper, unperforated, height 7.5 mm, width 35 mm, length: 2 m  |
| 0801733         | NS 35/ 7,5 PERF 2000MM      | DIN rail, material: Steel, galvanized and passivated with a thick layer, perforated, height 7.5 mm, width 35 mm, length: 2 m   |
| 0801681         | NS 35/ 7,5 UNPERF 2000MM    | DIN rail, material: Steel, unperforated, height 7.5 mm, width 35 mm, length: 2 m   |
| 1201756         | NS 35/15 AL UNPERF 2000MM   | DIN rail, deep-drawn, high profile, unperforated, 1.5 mm thick, material: Aluminum, height 15 mm, width 35 mm, length 2 m  |

|         |                            |  |
|---------|----------------------------|--|
| 1201895 | NS 35/15 CU UNPERF 2000MM  | DIN rail, material: Copper, unperforated, 1.5 mm thick, height 15 mm, width 35 mm, length: 2 m |
| 1201714 | NS 35/15 UNPERF 2000MM     | DIN rail, material: Steel, unperforated, height 15 mm, width 35 mm, length: 2 m                |
| 1201798 | NS 35/15-2,3 UNPERF 2000MM | DIN rail, material: Steel, unperforated, 2.3 mm thick, height 15 mm, width 35 mm, length: 2 m  |

**Bridges**

|         |                  |   |
|---------|------------------|---|
| 3030161 | FBS 2-5          | Cross connector/bridge, Number of positions: 2, Color: red  |
| 3030174 | FBS 3-5          | Cross connector/bridge, Number of positions: 3, Color: red  |
| 3030187 | FBS 4-5          | Cross connector/bridge, Number of positions: 4, Color: red  |
| 3030190 | FBS 5-5          | Cross connector/bridge, Number of positions: 5, Color: red  |
| 3030213 | FBS 10-5         | Cross connector/bridge, Number of positions: 10, Color: red |
| 3030226 | FBS 20-5         | Cross connector/bridge, Number of positions: 20, Color: red |
| 3038930 | FBS 50-5         | Cross connector/bridge, Number of positions: 50, Color: red |
| 3030886 | RB ST 16-(2,5/4) | Cross connector/bridge, Number of positions: 2, Color: red  |
| 3030899 | RB ST 35-(2,5/4) | Cross connector/bridge, Number of positions: 2, Color: red  |

**Plug/Adapter**

|         |                  |  |
|---------|------------------|--|
| 3030925 | PAI-4            | Test adapter, Color: gray                                  |
| 3030983 | PS-5             | Test adapter, Color: red                                   |
| 3030873 | RB ST 10-(2,5/4) | Cross connector/bridge, Number of positions: 2, Color: red |
| 3030860 | RB ST 6-(2,5/4)  | Cross connector/bridge, Number of positions: 2, Color: red |

**Tools**

|         |               |   |
|---------|---------------|---|
| 1204517 | SZF 1-0,6X3,5 | Screwdriver, blade: 0.6 x 3.5 x 100 mm, length 180 mm |
|---------|---------------|---|

**Diagrams/Drawings**

Circuit diagram



Approbationslogos (EX-Bereich)

---



**Address**

PHOENIX CONTACT Inc., USA  
586 Fulling Mill Road  
Middletown, PA 17057, USA  
Phone (800) 888-7388  
Fax (717) 944-1625  
<http://www.phoenixcon.com>



© 2010 Phoenix Contact  
Technical modifications reserved;



Компания «ЭлектроПласт» предлагает заключение долгосрочных отношений при поставках импортных электронных компонентов на взаимовыгодных условиях!

Наши преимущества:

- Оперативные поставки широкого спектра электронных компонентов отечественного и импортного производства напрямую от производителей и с крупнейших мировых складов;
- Поставка более 17-ти миллионов наименований электронных компонентов;
- Поставка сложных, дефицитных, либо снятых с производства позиций;
- Оперативные сроки поставки под заказ (от 5 рабочих дней);
- Экспресс доставка в любую точку России;
- Техническая поддержка проекта, помощь в подборе аналогов, поставка прототипов;
- Система менеджмента качества сертифицирована по Международному стандарту ISO 9001;
- Лицензия ФСБ на осуществление работ с использованием сведений, составляющих государственную тайну;
- Поставка специализированных компонентов (Xilinx, Altera, Analog Devices, Intersil, Interpoint, Microsemi, Aeroflex, Peregrine, Syfer, Eurofarad, Texas Instrument, Miteq, Cobham, E2V, MA-COM, Hittite, Mini-Circuits, General Dynamics и др.);

Помимо этого, одним из направлений компании «ЭлектроПласт» является направление «Источники питания». Мы предлагаем Вам помощь Конструкторского отдела:

- Подбор оптимального решения, техническое обоснование при выборе компонента;
- Подбор аналогов;
- Консультации по применению компонента;
- Поставка образцов и прототипов;
- Техническая поддержка проекта;
- Защита от снятия компонента с производства.



#### Как с нами связаться

**Телефон:** 8 (812) 309 58 32 (многоканальный)

**Факс:** 8 (812) 320-02-42

**Электронная почта:** [org@eplast1.ru](mailto:org@eplast1.ru)

**Адрес:** 198099, г. Санкт-Петербург, ул. Калинина, дом 2, корпус 4, литера А.